



PORTS AND YACHTING DIRECTORATE

## LOCAL NOTICE TO MARINERS N° 106 of 2025

Our Ref: **TM/PYD/0001/25**

2nd July 2025



**Transport Malta**

Malta Transport Centre,  
Triq Pantar, Hal Lija, LJA 2021  
Malta

Tel: (356) 2122 2203  
Fax: (356) 2125 0365  
Email: [info.tm@transport.gov.mt](mailto:info.tm@transport.gov.mt)

[www.transport.gov.mt](http://www.transport.gov.mt)

### **Hazard To Navigation in Marsamxett Harbour**

The Ports and Yachting Directorate, Transport Malta, notifies mariners, that a submersible obstruction has been detected in Il-Port Ta' Marsamxett in position:

Latitude (N)

Longitude (E)

35° 54'.307

014° 30'.77

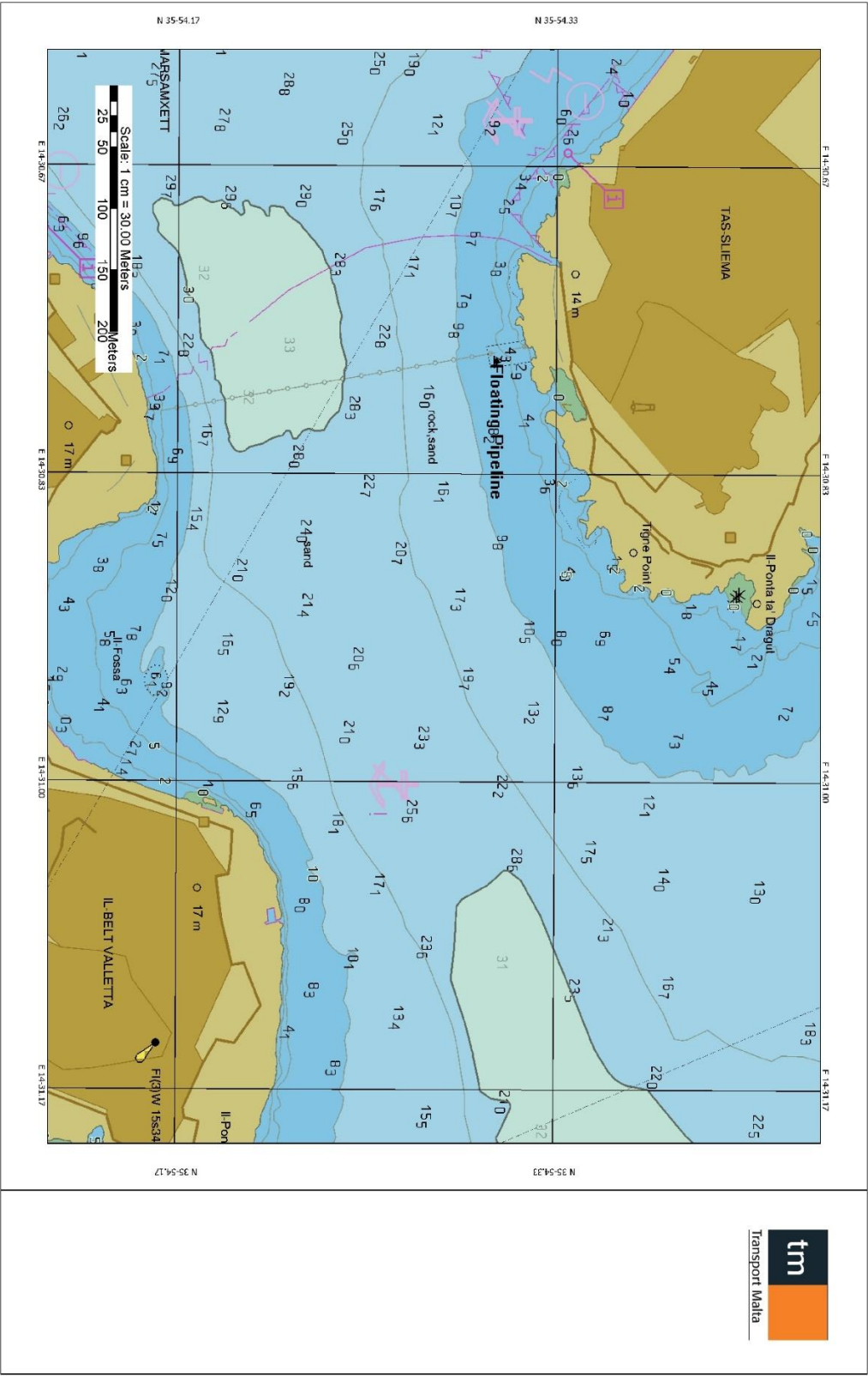
28m off the nearest coastline. The obstruction is part of the submersible water pipeline running across from Tigne point to Valletta (see attached chart).

Mariners are advised to navigate with extreme caution when navigating in the vicinity of the submersible pipeline and keep a safe distance from the given point. Navigation from the given coordinate to inshore bound Tigne is therefore prohibited.

Chart affected BA 177



Transport Malta



Transport Malta