



PORTS AND YACHTING DIRECTORATE

LOCAL NOTICE TO MARINERS N° 209 of 2025

Our Ref: **TM/PYD/83/97/001**

1 December 2025



Transport Malta

Malta Transport Centre,
Triq Pantar, Hal Lija, LJA 2021
Malta

Tel: (356) 2122 2203
Fax: (356) 2125 0365
Email: info.tm@transport.gov.mt

www.transport.gov.mt

Santa swimming event in Marsamxett Harbour

The Ports and Yachting Directorate, Transport Malta, notifies that a Santa swimming event will be held on Sunday 7th December 2025. The swimming event is estimated to commence at 1000 hours and will finish at approximately 1200 hours.

The Santa swimming event will start from the Grand Hotel Excelsior Marina, they will swim towards Manoel Island and back to near the Grand Hotel Excelsior, always within Area A (Swimming), as shown in red on the attached chart.

Support vessels will accompany the participating swimmers.

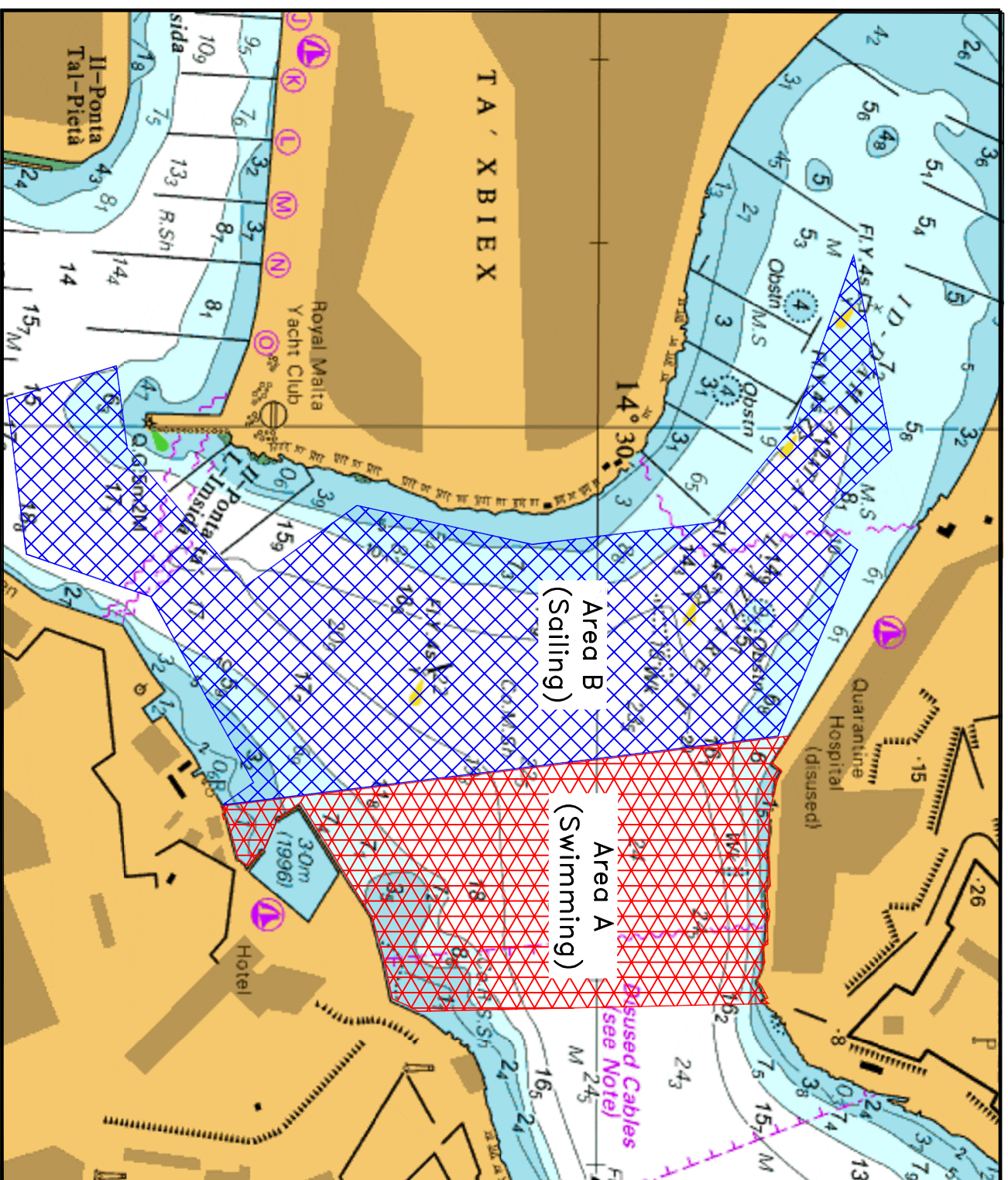
On the same date and time there will be a sailing experience within Area B (Sailing), as shown in blue on the attached chart.

On Sunday 7th December 2025 from 1000 hours to 1200 hours (during the event) entry and exit to Id-Daħla ta' L-Azzarett and Id- Daħla ta' L-Imsida will be restricted.

Mariners are advised to keep a sharp lookout and navigate well clear of the area during the stipulated date and time, giving the swimmers and sailing vessels a wide berth.

They are to comply with any instructions given on VHF Channel 12 and/or 16, by Valletta VTS and by any Enforcement Officers on site.

Chart affected: **BA 177**



© British Crown Copyright 1970, 1983, 1986, 1988, 1999, 2000
All rights reserved.

The UK Hydrographic Office makes the accompanying data
Available to Malta Maritime Authority (Transport Malta)
Under the terms and conditions of agreement HO 1427/020930/01.

DISCLAIMER

Whilst the UK Hydrographic Office has endeavoured to ensure
That the material supplied is suitable for the purpose described,
it accepts no liability (to the maximum extent permitted by law)
For any damage or loss of any nature arising from its use.
The material supplied is used entirely at the Recipient's own risk.