



PORTS AND YACHTING DIRECTORATE

## LOCAL NOTICE TO MARINERS N° 191 of 2025

Our Ref: **TM/PYD/132/89**

14 October 2025



**Transport Malta**

Malta Transport Centre,  
Triq Pantar, Hal Lija, LJA 2021  
Malta

Tel: (356) 2122 2203  
Fax: (356) 2125 0365  
Email: [info.tm@transport.gov.mt](mailto:info.tm@transport.gov.mt)

[www.transport.gov.mt](http://www.transport.gov.mt)

### **Filming at different localities - Countess of Montecristo**

The Ports and Yachting Directorate, Transport Malta notifies all mariners, owners of vessels and divers, that filming activities will take place at different localities.

During these filming the base will be at Cirkewwa South Quay, which will be restricted in use from Thursday 23<sup>rd</sup> October 2025 to Saturday 1<sup>st</sup> November 2025.

Filming will take place on between Friday 24<sup>th</sup> October 2025 and Wednesday 17<sup>th</sup> December 2025 on the days listed for each locality as follow:

#### **Paradise Day**

Filming in this locality is scheduled to be carried out on any days between Friday 24<sup>th</sup> October and Tuesday 28<sup>th</sup> October 2025, within area A, as shown on the attached chart A. During filming in this locality a clear horizon is requested, therefore no loitering is allowed.

#### **South-East of Malta (Close to Filfla)**

Filming in this locality is scheduled to be carried out on any days between Friday 24<sup>th</sup> October and Tuesday 28<sup>th</sup> October 2025, within area B, as shown on the attached chart B. During filming in this locality no loitering is allowed within the area indicated.

#### **Comino Cave**

Filming in this locality is scheduled to be carried out on any days between Friday 24<sup>th</sup> October and Saturday 1<sup>st</sup> November 2025, within area C, as shown on the attached chart C. During filming in this locality no loitering is allowed within the area indicated.

#### **Il- Bajja ta' Ghajn Tuffieha**

Filming in this locality is scheduled to be carried out on any days between Monday 27<sup>th</sup> October and Sunday 2<sup>nd</sup> November 2025, within area D, as shown on the attached chart D. During filming in this locality no loitering is allowed within the area indicated.



### **Il-Bajja tal-Gnejna / Il-Qarraba**

Filming in this locality is scheduled to be carried out on any days between Tuesday 28<sup>th</sup> October and Sunday 2<sup>nd</sup> November 2025, within area E, as shown on the attached chart E. During filming in this locality a clear horizon is requested, therefore no loitering is allowed within the area indicated.

### **The Grand Harbour - (between Lascaris Wharf and Il-Ponta ta' L-Imgerbeb)**

Filming in this locality is scheduled to be carried out on any days between Friday 14<sup>th</sup> November and Tuesday 18<sup>th</sup> November 2025, within area F, as shown on the attached chart F.

During filming in this locality no loitering is allowed within the area indicated.

### **Manoel Island**

Filming in this locality is scheduled to be carried out on any days between Thursday 11<sup>th</sup> December and Wednesday 17<sup>th</sup> December 2025, within area G, as shown on the attached chart G.

During filming in this locality no loitering is allowed within the area indicated.

Filming will be carried out from any of the following vessels:

Workboat     - "Maria C" and  
RHIBs         - "Nautica 1", "Nautica 2", Nautica 3" "Sahara Z2 and "Nevada"

When any of the above-mentioned vessels are sighted a safety distance of 200m from them is being requested.

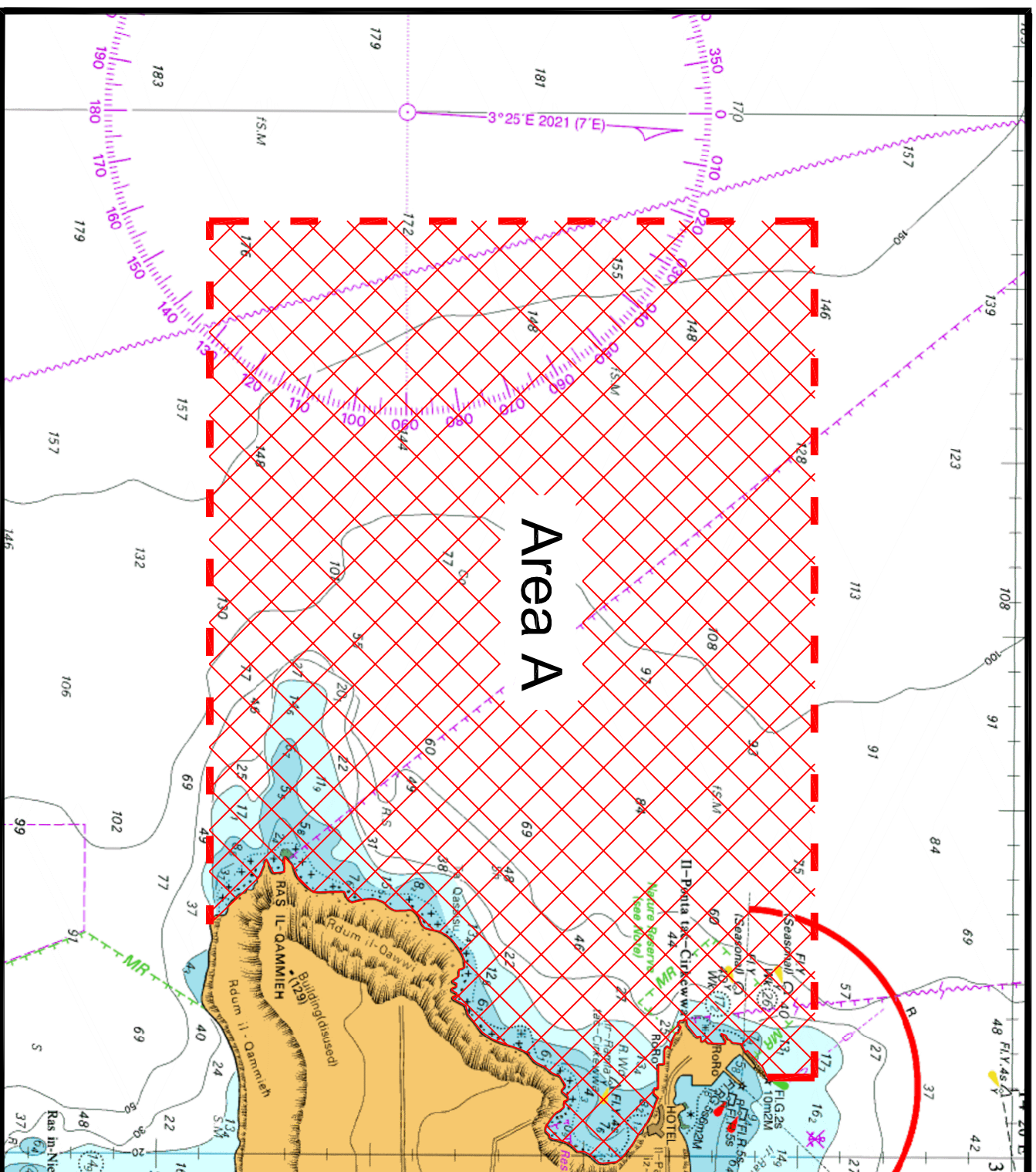
All mariners, owners of vessels and divers are advised that entry into the areas (as shown on the attached charts) is to be avoided on the above-mentioned dates.

Mariners are advised to navigate with caution at slow speed and give a wide berth when in the vicinity, they are to keep out of the above-mentioned area and to comply with instructions and directions issued on VHF channel 12 and/or 16 by Valletta VTS and by any Enforcement Officers on site.

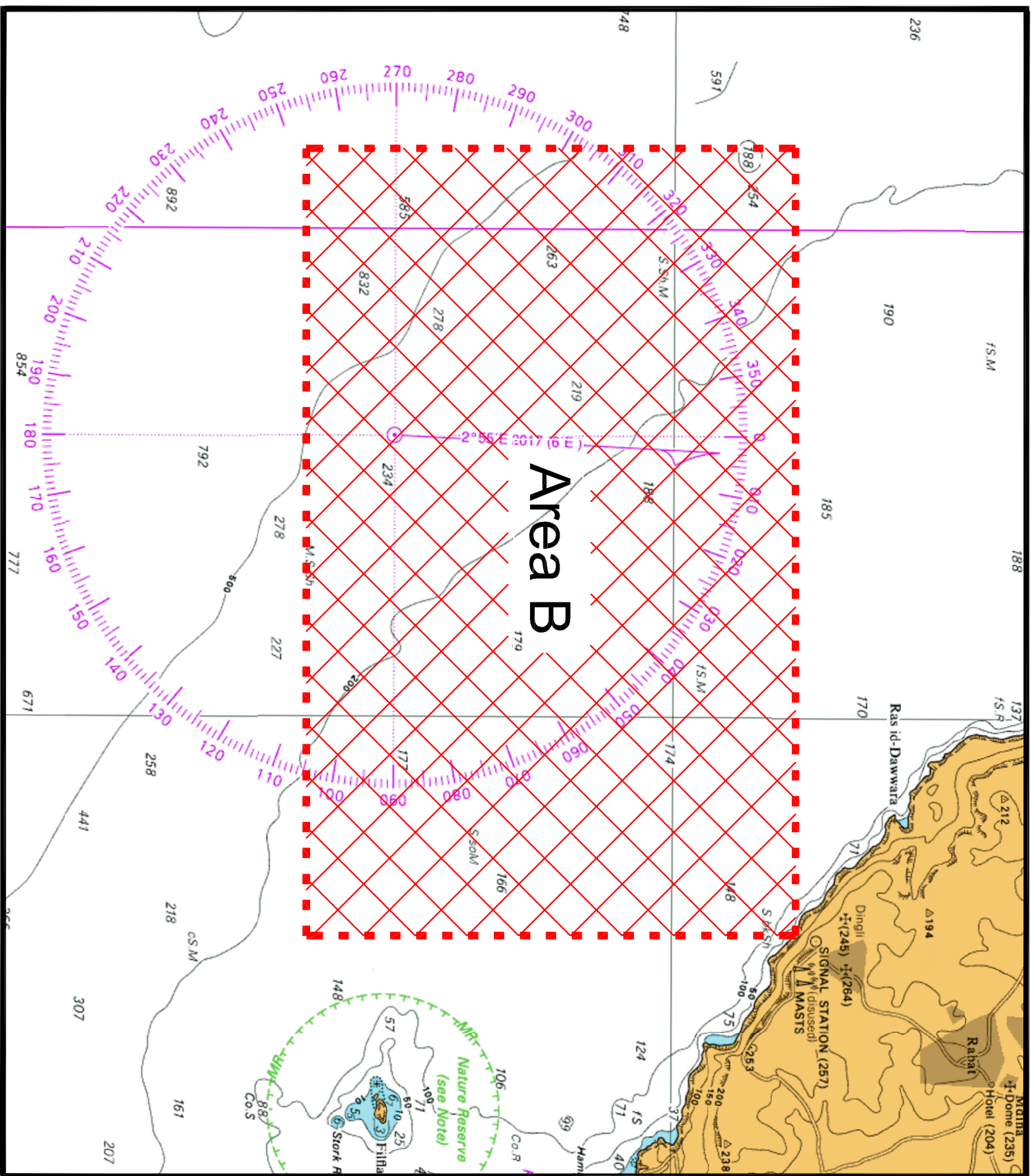
**BA Chart: 177, 211, 2537**

The UK Hydrographic Office makes the accompanying data Available to Malta Maritime Authority (Transport Malta)  
Under the terms and conditions of agreement HO 1427/020930/01.

Whilst the UK Hydrographic Office has endeavoured to ensure that the material supplied is suitable for the purpose described, it accepts no liability (to the maximum extent permitted by law) for any damage or loss of any nature arising from its use. The material supplied is used entirely at the Recipient's own risk.



# Chart A



© British Crown Copyright 1970, 1983, 1986, 1988, 1999, 2000  
All rights reserved.

The UK Hydrographic Office makes the accompanying data  
Available to Malta Maritime Authority (Transport Malta)  
Under the terms and conditions of agreement HO 1427/020930/01.

#### DISCLAIMER

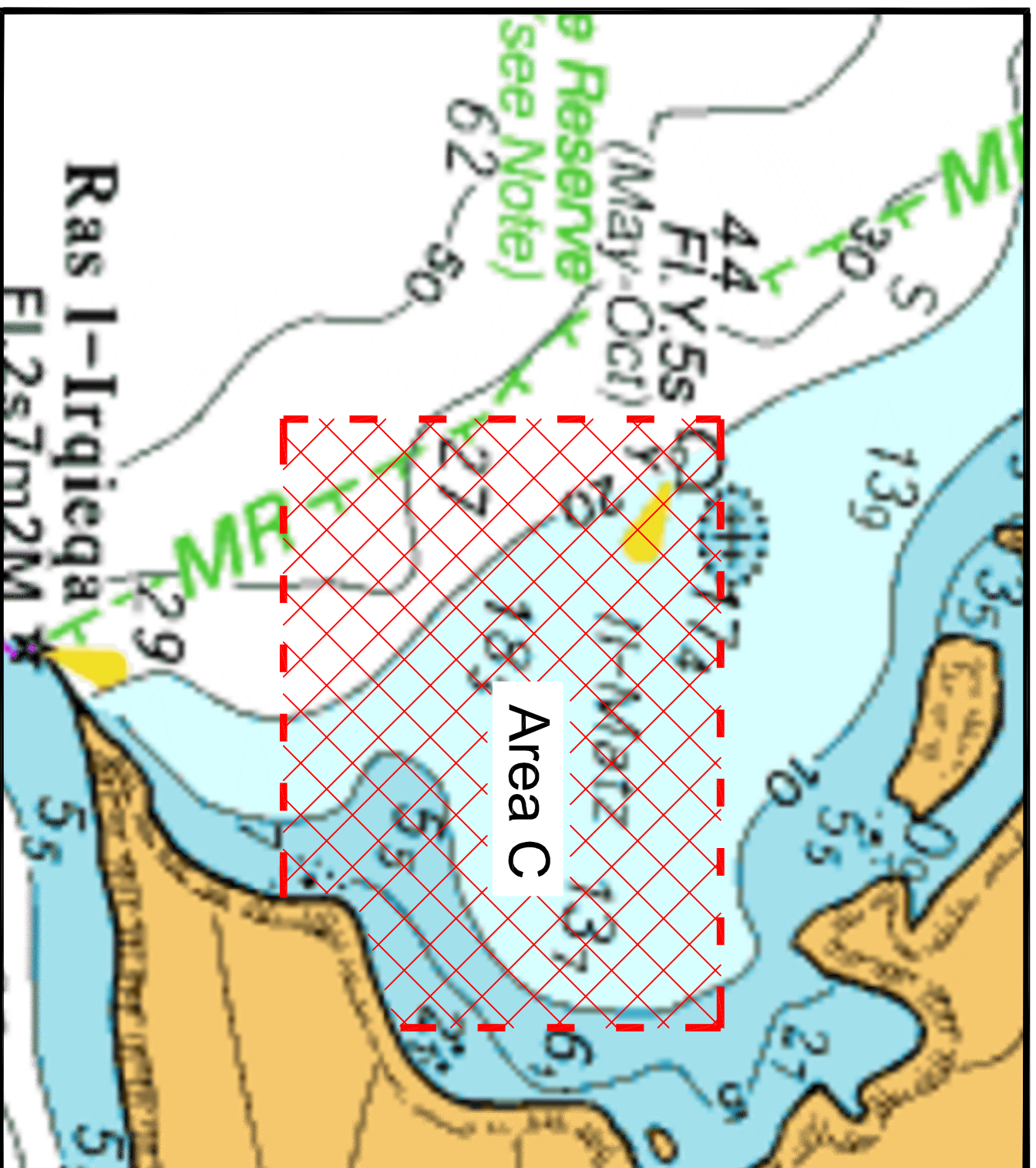
Whilst the UK Hydrographic Office has endeavoured to ensure  
That the material supplied is suitable for the purpose described,  
it accepts no liability (to the maximum extent permitted by law)  
For any damage or loss of any nature arising from its use.  
The material supplied is used entirely at the Recipient's own risk.

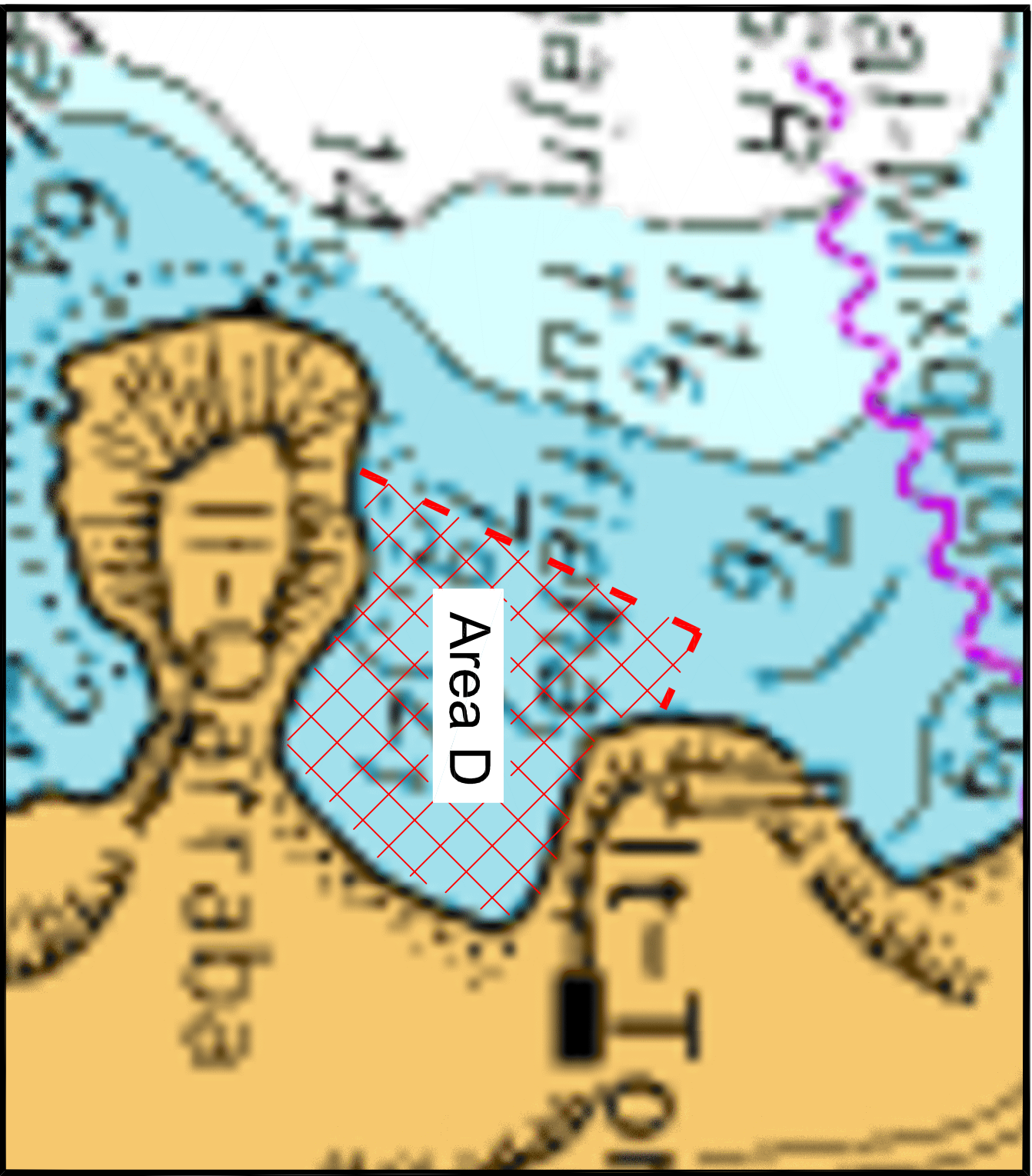
# Chart B



The UK Hydrographic Office makes the accompanying data Available to Malta Maritime Authority (Transport Malta)  
Under the terms and conditions of agreement HO 1427/020930/01.

Whilst the UK Hydrographic Office has endeavoured to ensure that the material supplied is suitable for the purpose described, it accepts no liability (to the maximum extent permitted by law) for any damage or loss of any nature arising from its use. The material supplied is used entirely at the Recipient's own risk.





© British Crown Copyright 1970, 1983, 1986, 1988, 1999, 2000  
All rights reserved.

The UK Hydrographic Office makes the accompanying data  
Available to Malta Maritime Authority (Transport Malta)  
Under the terms and conditions of agreement HO 1427/020930/01.

DISCLAIMER

Whilst the UK Hydrographic Office has endeavoured to ensure  
That the material supplied is suitable for the purpose described,  
it accepts no liability (to the maximum extent permitted by law)  
For any damage or loss of any nature arising from its use.  
The material supplied is used entirely at the Recipient's own risk.

Chart D





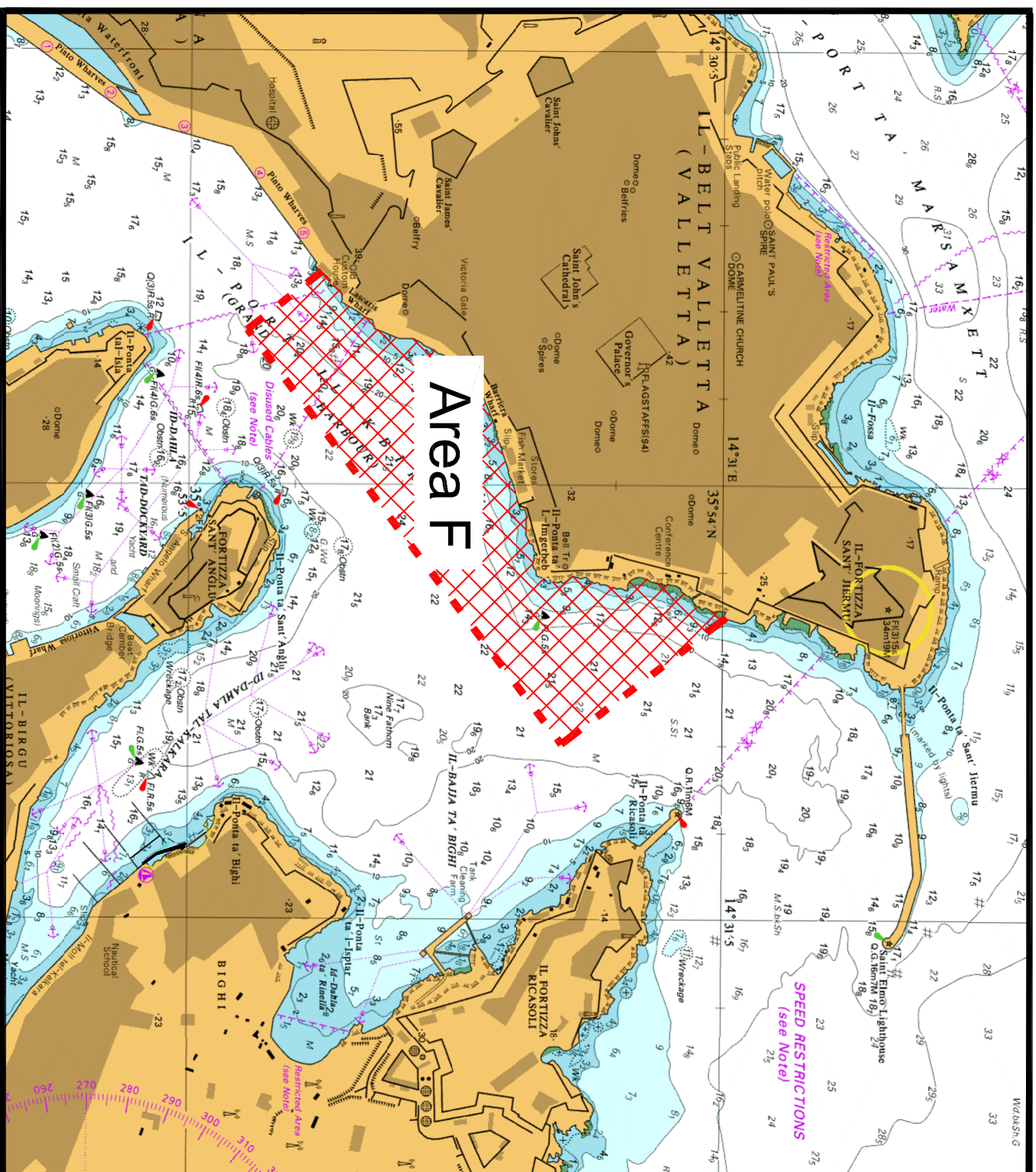
© British Crown Copyright 1970, 1983, 1986, 1988, 1999, 2000  
All rights reserved.

The UK Hydrographic Office makes the accompanying data  
Available to Malta Maritime Authority (Transport Malta)  
Under the terms and conditions of agreement HO 1427/020930/01.

#### DISCLAIMER

Whilst the UK Hydrographic Office has endeavoured to ensure  
That the material supplied is suitable for the purpose described,  
it accepts no liability (to the maximum extent permitted by law)  
For any damage or loss of any nature arising from its use.  
The material supplied is used entirely at the Recipient's own risk.

# Chart E



© British Crown Copyright 1970, 1983, 1986, 1988, 1999, 2000  
All rights reserved.

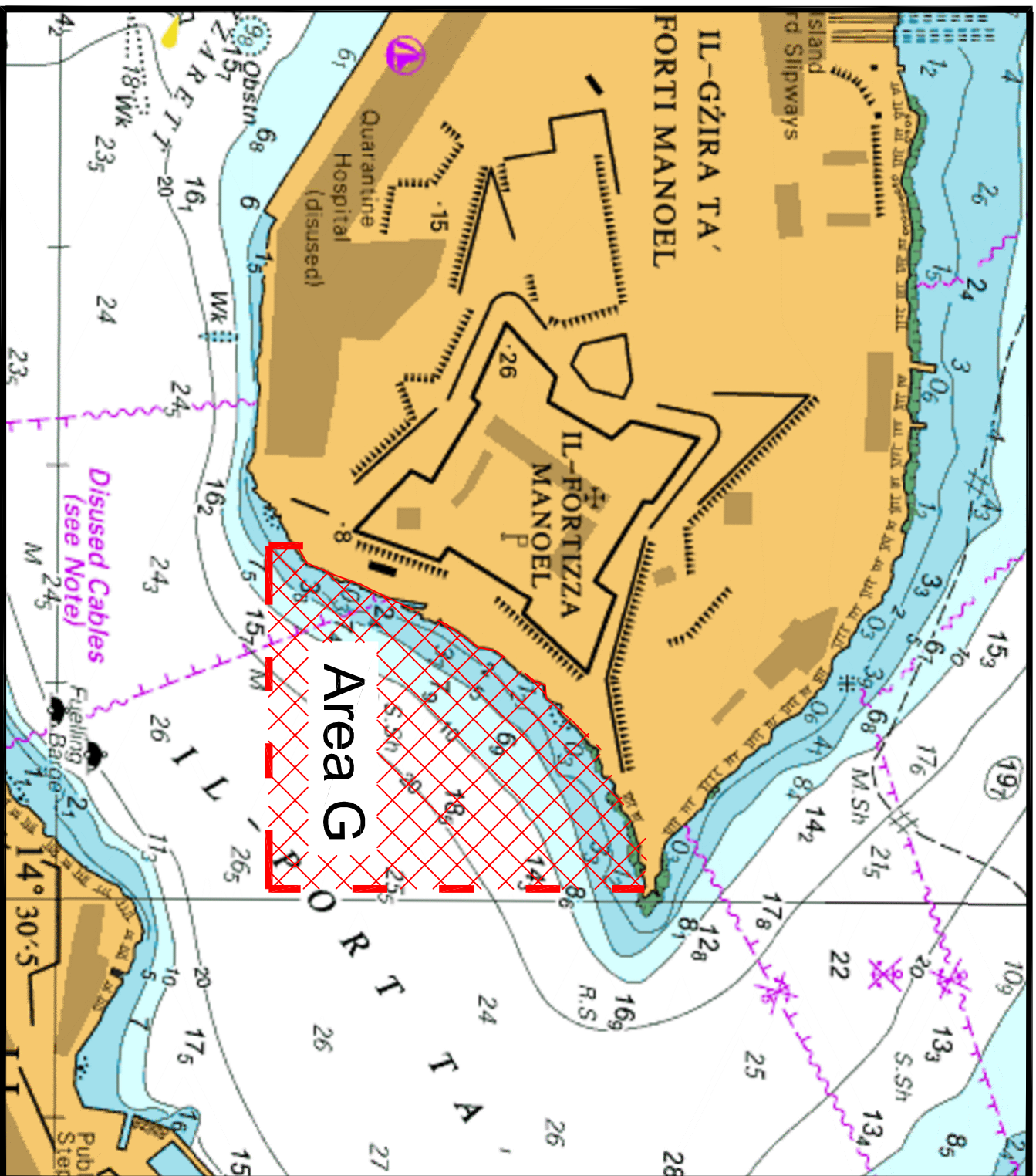
The UK Hydrographic Office makes the accompanying data  
Available to Malta Maritime Authority (Transport Malta)  
Under the terms and conditions of agreement HO 1427/020930/01.

#### DISCLAIMER

Whilst the UK Hydrographic Office has endeavoured to ensure  
That the material supplied is suitable for the purpose described,  
it accepts no liability (to the maximum extent permitted by law)  
For any damage or loss of any nature arising from its use.  
The material supplied is used entirely at the Recipient's own risk.

Chart F





© British Crown Copyright 1970, 1983, 1986, 1988, 1999, 2000  
All rights reserved.

The UK Hydrographic Office makes the accompanying data  
Available to Malta Maritime Authority (Transport Malta)  
Under the terms and conditions of agreement HO 1427/020930/01.

#### DISCLAIMER

Whilst the UK Hydrographic Office has endeavoured to ensure  
That the material supplied is suitable for the purpose described,  
it accepts no liability (to the maximum extent permitted by law)  
For any damage or loss of any nature arising from its use.  
The material supplied is used entirely at the Recipient's own risk.

# Chart G