



PORTS AND YACHTING DIRECTORATE

## LOCAL NOTICE TO MARINERS N° 190 of 2025

Our Ref: **MT/PYD/0001/25**

10 October 2025



**Transport Malta**

Malta Transport Centre,  
Triq Pantar, Hal Lija, LJA 2021  
Malta

Tel: (356) 2122 2203  
Fax: (356) 2125 0365  
Email: [info.tm@transport.gov.mt](mailto:info.tm@transport.gov.mt)

[www.transport.gov.mt](http://www.transport.gov.mt)

### **Off-loading of Trench-Pipelaying Barge from a Heavy-Lift Vessel**

The Ports and Yachting Directorate, Transport Malta, informs mariners and the general public about an offloading operation involving a trench-pipelaying barge from a heavy-lift vessel.

This offloading operation is expected to take place from Monday 13<sup>th</sup> October 2025 to Friday 17<sup>th</sup> October 2025.

The operation will be conducted within Bunkering Area 1, as shown in Chart A. However, if weather conditions are unfavourable, an alternative site has been identified near Il-Bajja ta' Fomm ir-Riħ, as shown in Chart B.

Due to the nature of the operation, all vessels are requested to maintain a safe distance of at least 200 meters from the heavy-lift vessel 'Red Zed 1' when it is in sight.

Masters and operators of vessels are advised to keep a vigilant lookout, proceed with caution, and navigate at slow speed (no wake) when approaching the designated area. Cooperation with the on-site contractor is essential.

All vessels must also comply with any instructions provided on VHF channels 12 or 16 by Valletta VTS and Enforcement Personnel on site.

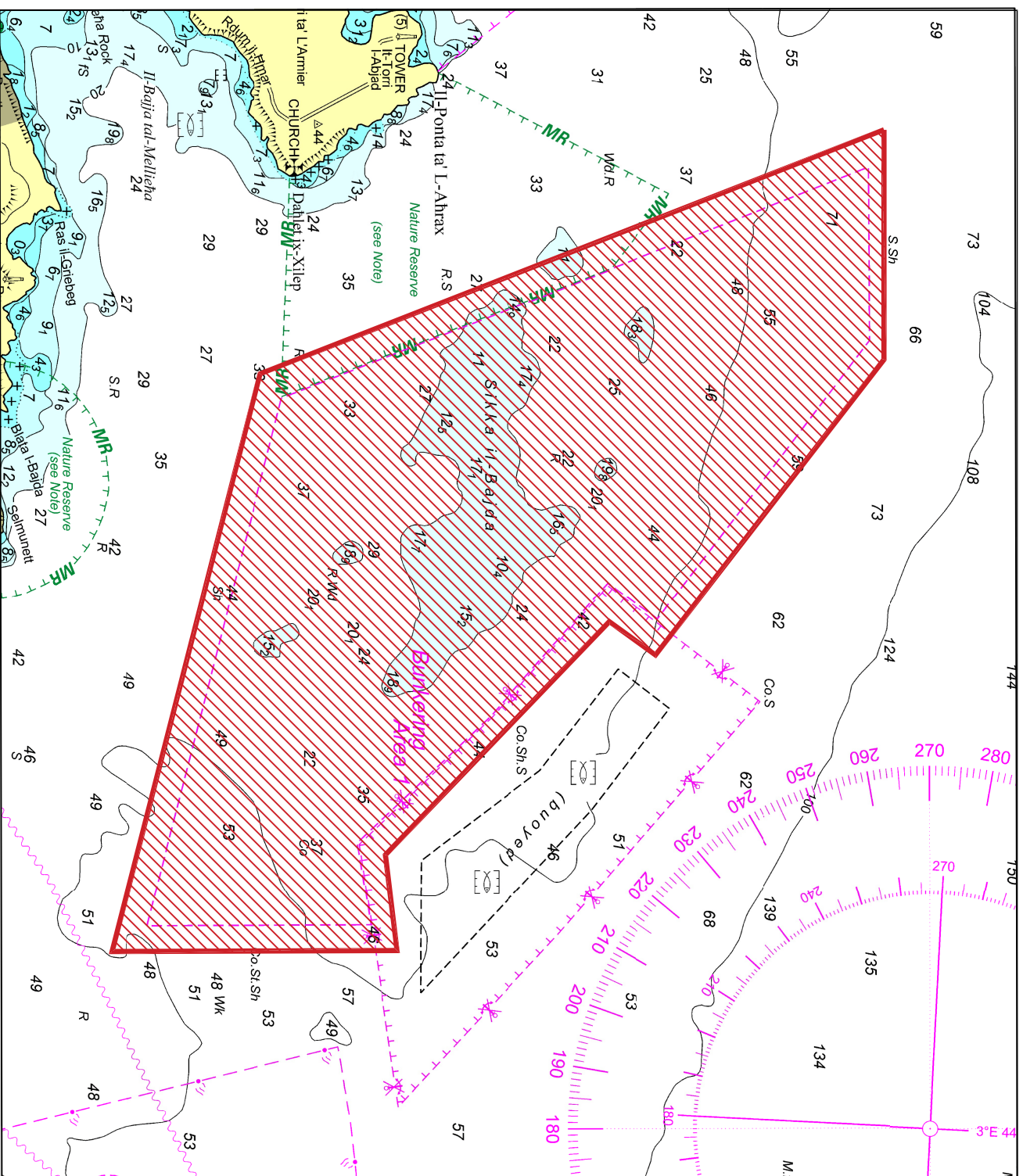
Chart affected: **BA 211, 194, 2537**

© Transport Malta all rights reserved

#### DISCLAIMER

Whilst the Ports and Yachting Directorate, Transport Malta has endeavoured to ensure that the material supplied is suitable for the purpose described, it accepts no liability (to the maximum extent permitted by law) for any damage or loss of any nature arising from its use.

The material supplied is used entirely at the Recipient's own risk.



# Chart A

© Transport Malta all rights reserved

#### DISCLAIMER

Whilst the Ports and Yachting Directorate, Transport Malta has endeavoured to ensure that the material supplied is suitable for the purpose described, it accepts no liability (to the maximum extent permitted by law) for any damage or loss of any nature arising from its use.

The material supplied is used entirely at the Recipient's own risk.

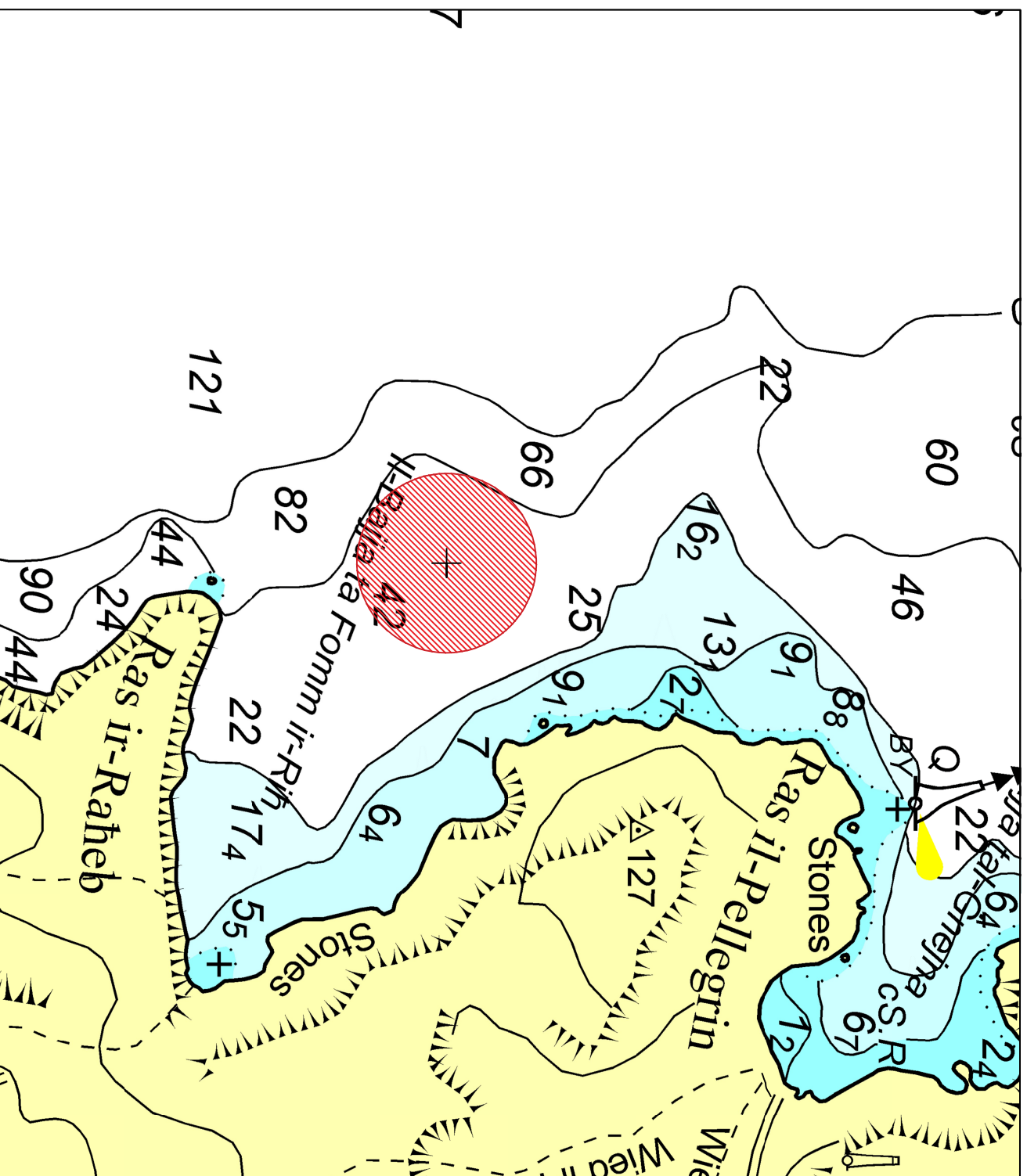


Chart B