



PORTS AND YACHTING DIRECTORATE

## LOCAL NOTICE TO MARINERS N° 188 of 2025

Our Ref: **TM/PYD/63/00**

09 October 2025



Transport Malta

Malta Transport Centre  
Marsa, MRS 1917  
Malta

Tel: (356) 2122 2203  
Fax: (356) 2125 0365  
Email: [info.tm@transport.gov.mt](mailto:info.tm@transport.gov.mt)

[www.transport.gov.mt](http://www.transport.gov.mt)

### Coastal Benthic Habitat Survey within Maltese Territorial Waters

The Ports and Yachting Directorate of Transport Malta would like to inform mariners and owners of vessels that a Coastal Benthic Habitat Survey will be conducted within the Maltese Territorial Waters.

Weather permitting, the survey is set to begin with immediate effect and is expected to be completed by Sunday 26<sup>th</sup> of October 2025, between 0800 hours and 1800 hours.

The survey will be carried out using a small survey rigid-hulled inflatable boat (RHIB) with registration number S27000. The boat will manoeuvre at a slow speed along the coasts of the islands of Malta, Gozo, Comino, Kemmunett, and Filfla.

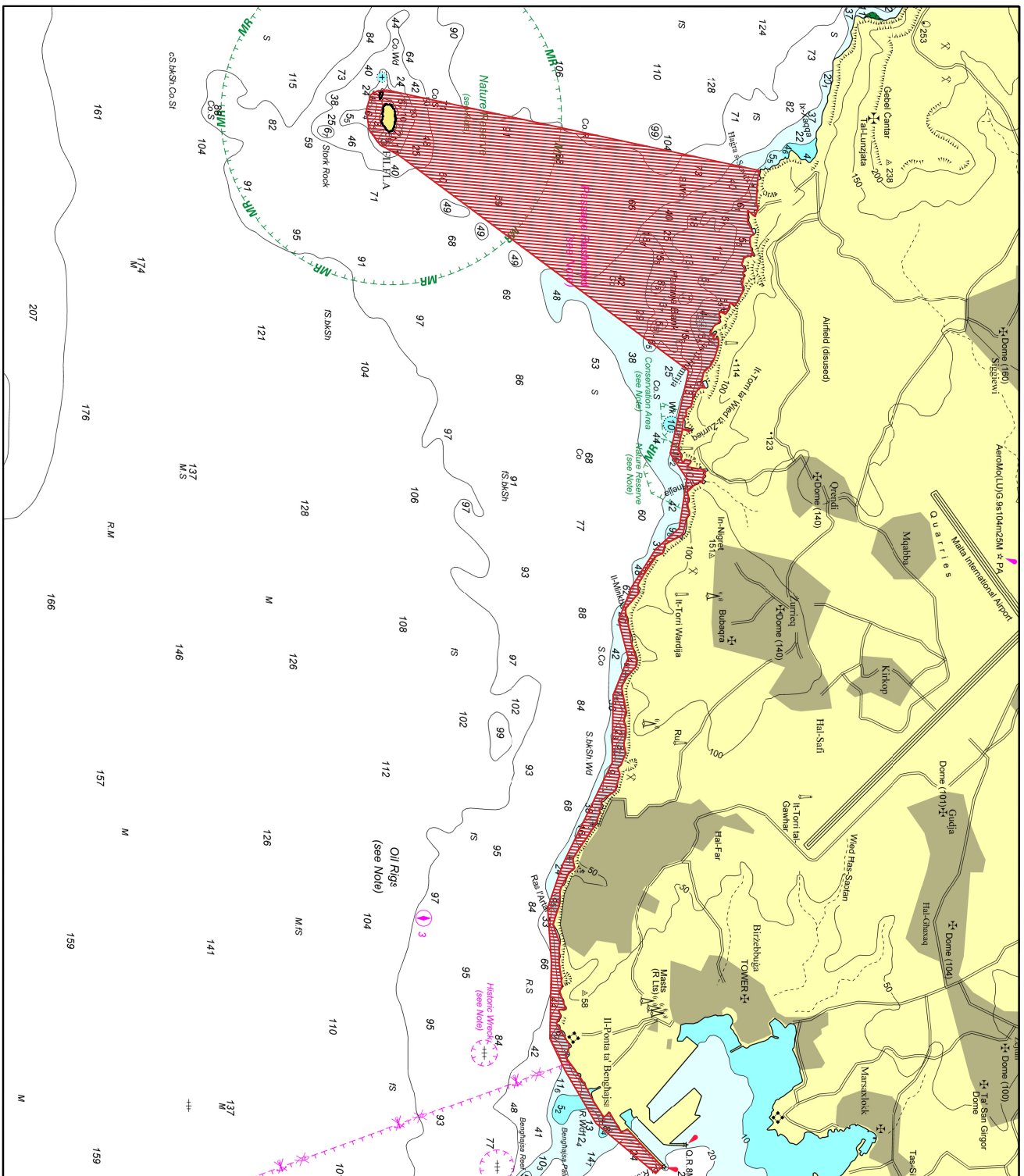
The survey areas are as follows:

- |    |  |         |
|----|--|---------|
| a) | Marsaxlokk Port to Ghar Lapsi and Filfla                 | Chart A |
| b) | Gnejna to Ghar Lapsi                                     | Chart B |
| c) | Gnejna to Il-Ponta ta' I-Ahrax and Comino-Kemmunett      | Chart C |
| d) | Il-Ponta ta' I-Ahrax to Il-Ponta ta' Dragut (Marsamxett) | Chart D |
| e) | Il-Ponta ta' Dragut (Marsamxett) to Marsaxlokk Port      | Chart E |
| f) | Around Gozo  | Chart F |

Vessel masters operating in the vicinity are requested to keep a safe distance of at least 100 meters from the survey RHIB when it is spotted.

Masters and operators of vessels are advised to keep a sharp lookout, navigate with caution and at safe speed (no wake) when navigating in the above indicated areas. They are to comply with instructions given on VHF Channel 12 and/or 16 by Valletta VTS, or by any enforcement agency on site.

Charts Affected: **BA 36, 177, 194, 2537, 2538**



© Transport Malta all rights reserved

# DISCLAIMER

Whilst the Ports and Yachting Directorate, Transport Malta has endeavoured to ensure that the material supplied is suitable for the purpose described, it accepts no liability (to the maximum extent permitted by law) for any damage or loss of any nature arising from its use.

The material supplied is used entirely at the Recipient's own risk.

© Transport Malta all rights reserved

# DISCLAIMER

Whilst the Ports and Yachting Directorate, Transport Malta has endeavoured to ensure that the material supplied is suitable for the purpose described, it accepts no liability to the maximum extent permitted by law) for any damage or loss of any nature arising from its use.

The material supplied is used entirely at the Recipient's own risk.

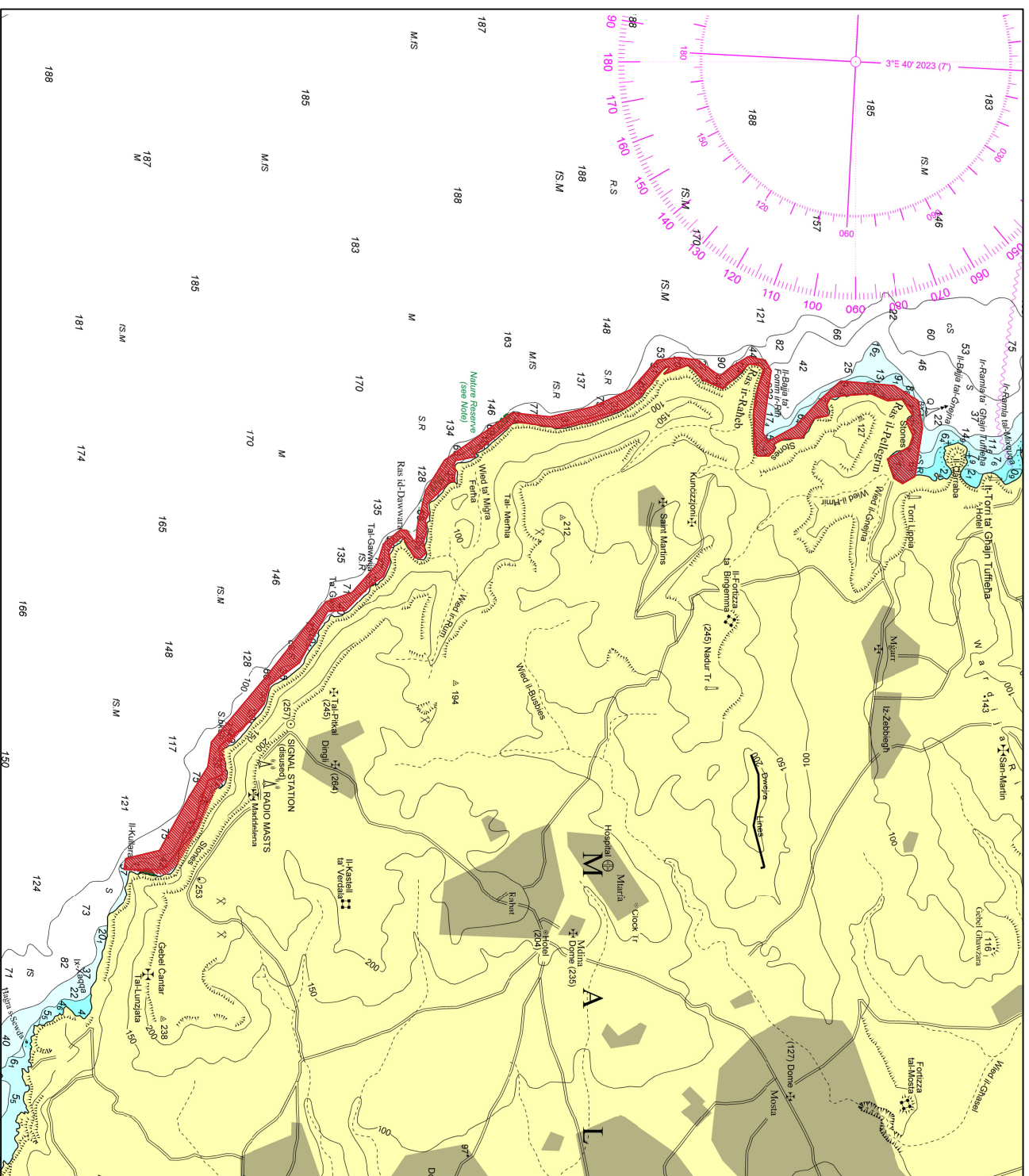
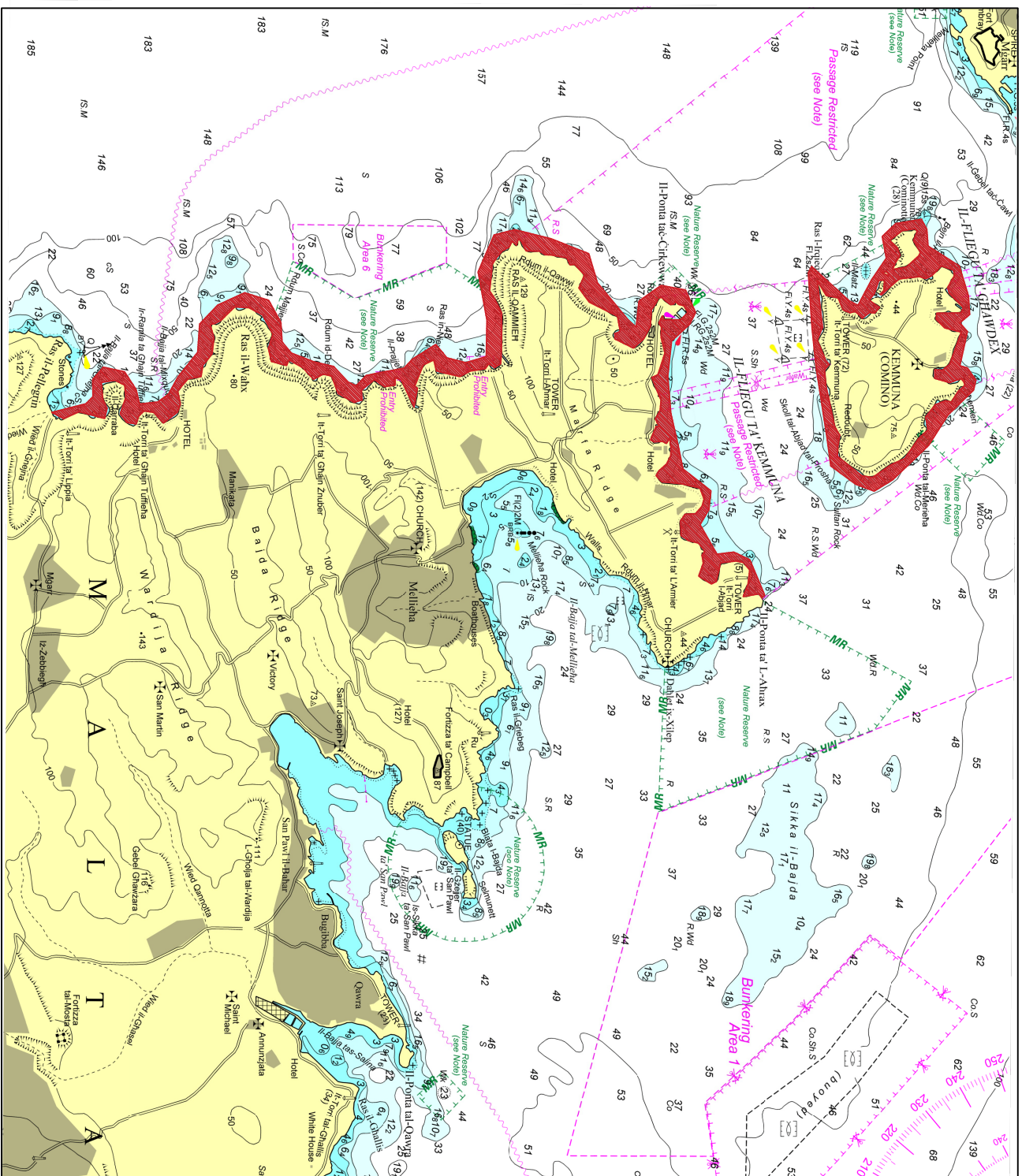


Chart 2





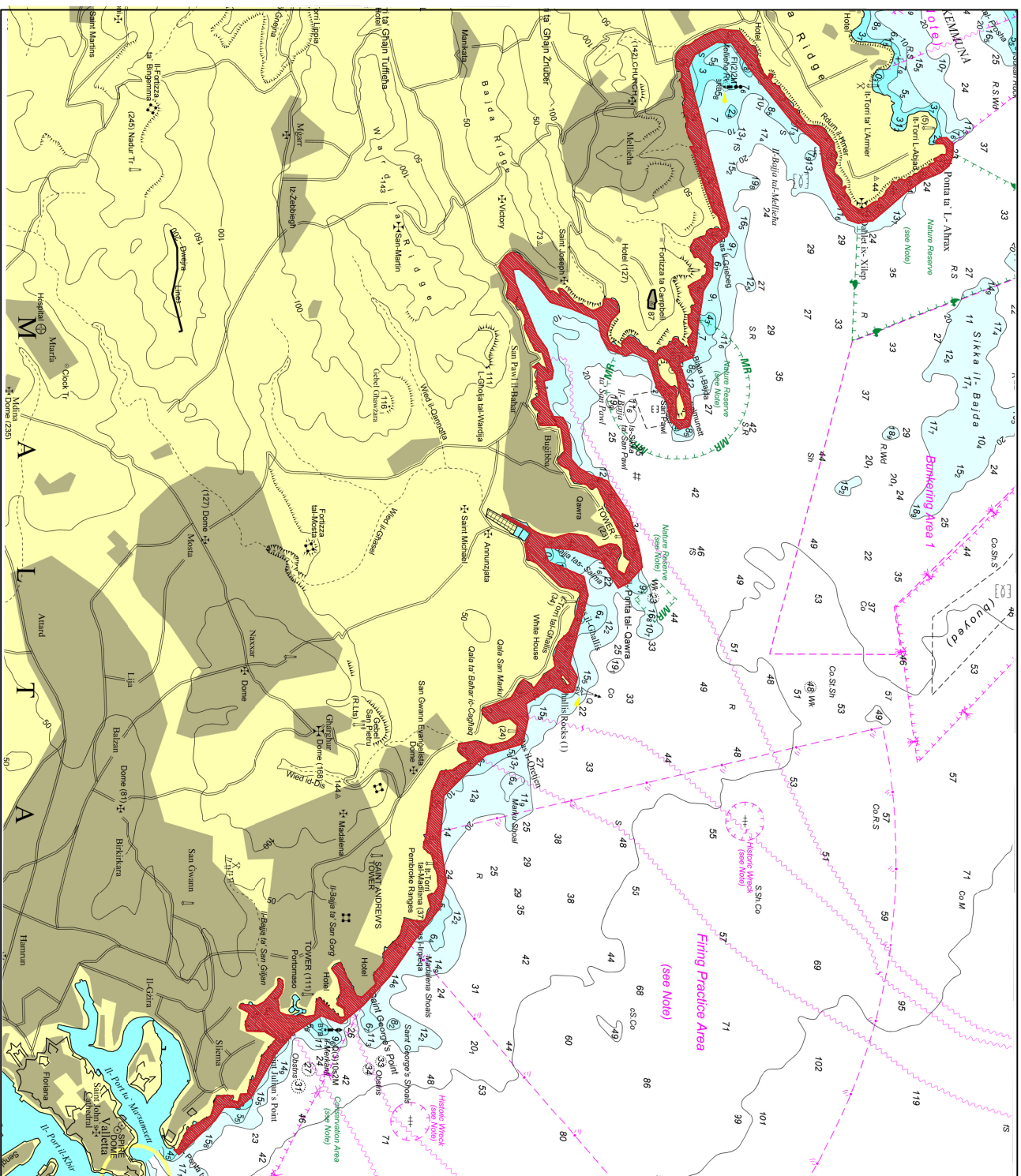
© Transport Malta all rights reserved

# DISCLAIMER

Whilst the Ports and Yachting Directorate, Transport Malta has endeavoured to ensure that the material supplied is suitable for the purpose described, it accepts no liability (to the maximum extent permitted by law) for any damage or loss of any nature arising from its use.

The material supplied is used entirely at the Recipient's own risk.



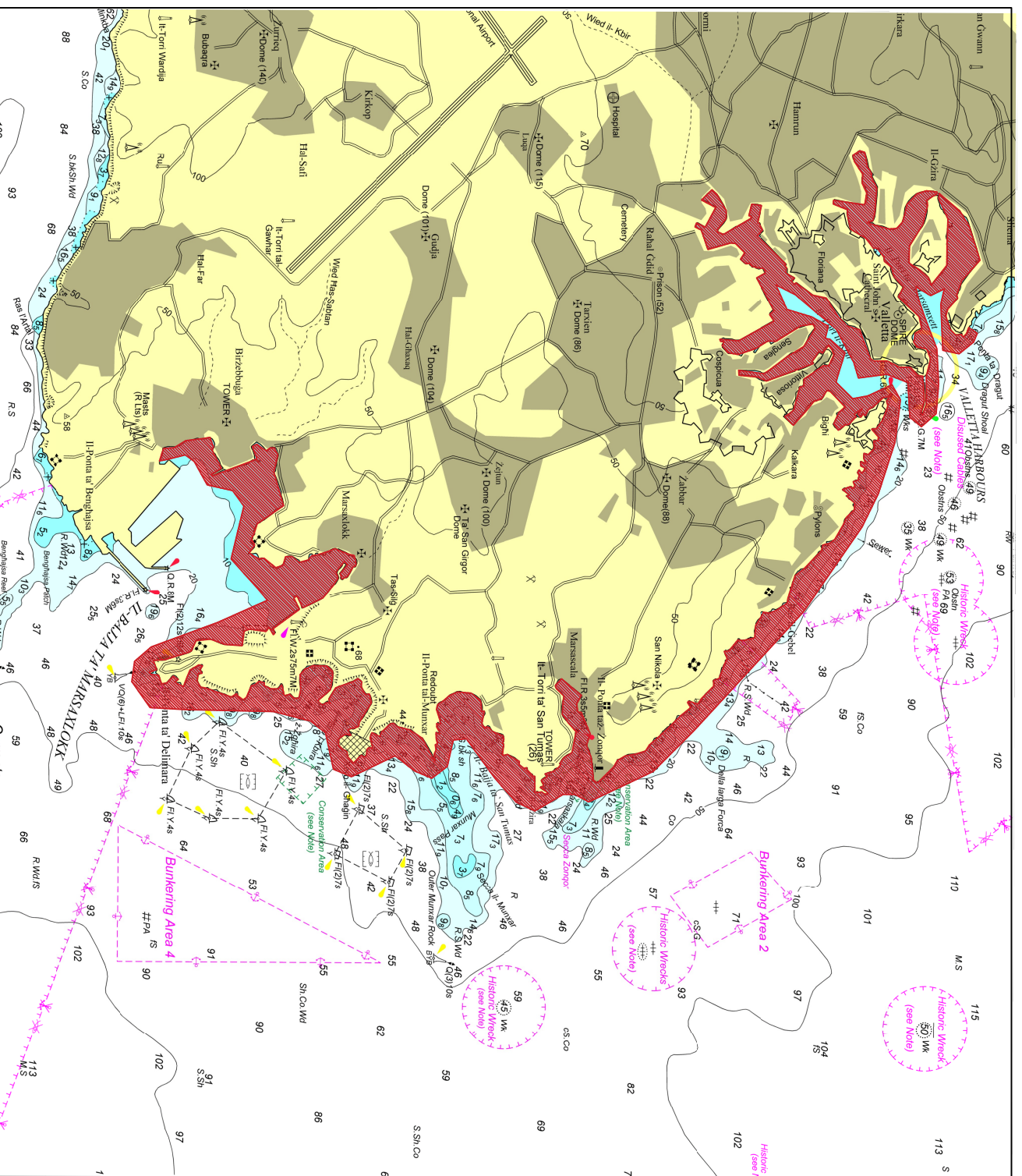


© Transport Malta all rights reserved

# DISCLAIMER

Whilst the Ports and Yachting Directorate, Transport Malta has endeavoured to ensure that the material supplied is suitable for the purpose described, it accepts no liability (to the maximum extent permitted by law) for any damage or loss of any nature arising from its use.

The material supplied is used entirely at the Recipient's own risk.



© Transport Malta all rights reserved  
DISCLAIMER

Whilst the Ports and Yachting Directorate, Transport Malta has endeavoured to ensure that the material supplied is suitable for the purpose described, it accepts no liability (to the maximum extent permitted by law) for any damage or loss of any nature arising from its use.

The material supplied is used entirely at the Recipient's own risk.



© Transport Malta all rights reserved  
DISCLAIMER

Whilst the Ports and Yachting Directorate, Transport Malta has endeavoured to ensure that the material supplied is suitable for the purpose described, it accepts no liability (to the maximum extent permitted by law) for any damage or loss of any nature arising from its use.  
The material supplied is used entirely at the Recipient's own risk.

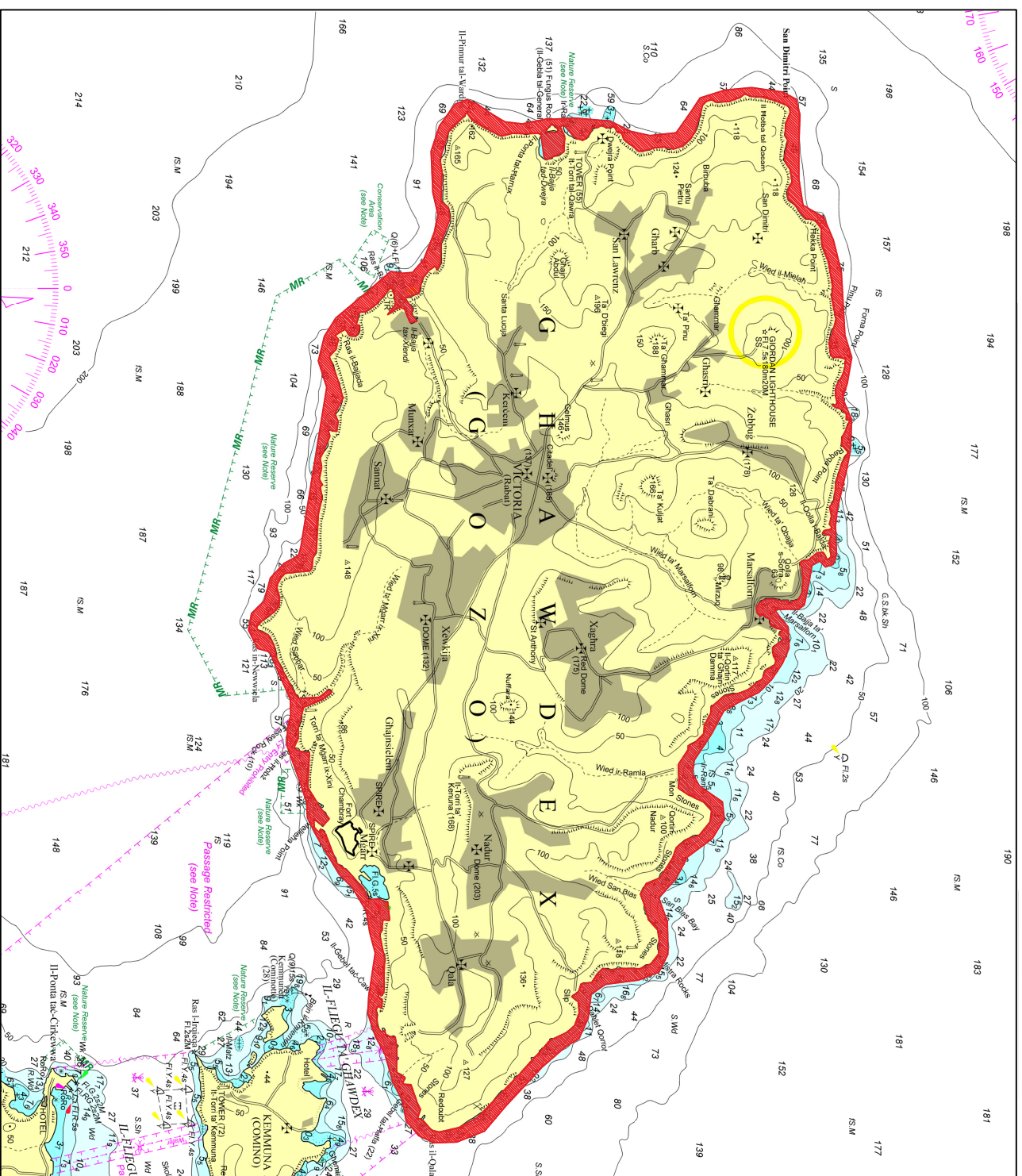


Chart 6