



PORTS AND YACHTING DIRECTORATE

LOCAL NOTICE TO MARINERS N° 182 of 2025

Our Ref: **TM/PYD/132/89**

01 October 2025



Transport Malta

Malta Transport Centre,
Triq Pantar, Hal Lija, LJA 2021
Malta

Tel: (356) 2122 2203
Fax: (356) 2125 0365
Email: info.tm@transport.gov.mt

www.transport.gov.mt

Filming within Valletta Harbours – RDH2

The Ports and Yachting Directorate, Transport Malta, notifies all mariners and sea vessel operators that filming activities will take place within the Valletta Harbours.

Filming will take place on the listed dates and times at each of the following locations.

St.Elmo – Marsamxett Port

Filming is scheduled to be carried out between Wednesday, 8th October 2025 and Saturday, 11th October 2025, near St.Elmo in Marsamxett Port, from 0600 hours to 2000 hours - as shown on the attached Chart A.

Grand Harbour Marina – Birgu

Filming is scheduled to be carried out close to Pontoon D at the Grand Harbour Marina – Birgu, between Tuesday 14th October 2025 and Wednesday 15th October 2025 from 0600 hours to 2000 hours - as shown on the attached Chart B.

Rinella Port Facility – Rinella Bay to Out at Sea

Filming is scheduled to be carried out from the Rinella Port Facility – Rinella Bay to Out at Sea, between Friday 10th October 2025 and Saturday 11th October 2025, and on Tuesday 14th October from 0600 hours to 2000 hours - as shown on the attached Chart C.

Old Fishmarket Building – Grand Harbour to Out at Sea

Filming is scheduled to be carried out from the Old Fishmarket Building to Out at Sea, between Thursday 9th October 2025 and Friday 17th October 2025, from 0600 hours to 2000 hours - as shown on the attached Chart D.

During the days and times mentioned above, for the safety of the swimmers and divers, mariners are advised to keep a sharp lookout and navigate at slow speed (no wake).



If on any of the days specified above, the filming cannot proceed due to bad weather, the filming will be held inside the Grand Harbour, as shown in Chart E. Navigation will be restricted within the area in line with the points X, Y and Z.

A Securite message will be issued by Valletta VTS on the days when the filming will take place within the Grand Harbour.

No loitering is being requested. Consequently, Masters and operators of vessels transiting these areas shall not moor or drop anchor and must remain underway.

Mariners navigating in the vicinity of the indicated area on the mentioned dates and time are to keep watch on VHF Channel **12 / 16** and are to cooperate with the filming crew and/or any enforcement officers in the area.

Any instructions issued on VHF channel **12 / 16** by Valletta VTS are to be complied with.

Charts affected: **BA 177.**

Marsamxett Port



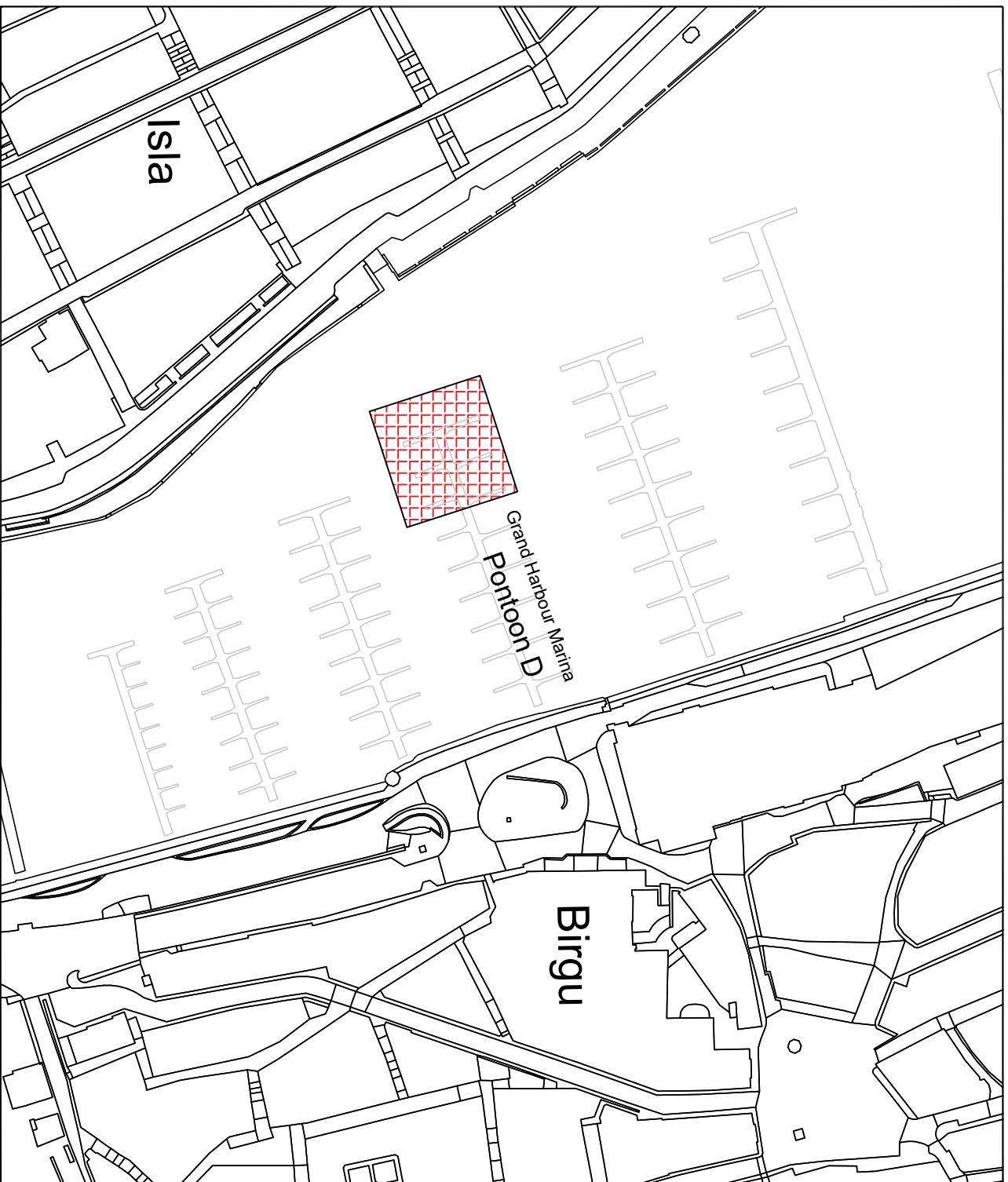
© Transport Malta all rights reserved

DISCLAIMER

Whilst the Ports and Yachting Directorate, Transport Malta has endeavoured to ensure that the material supplied is suitable for the purpose described, it accepts no liability (to the maximum extent permitted by law) for any damage or loss of any nature arising from its use.

The material supplied is used entirely at the Recipient's own risk.

Chart A



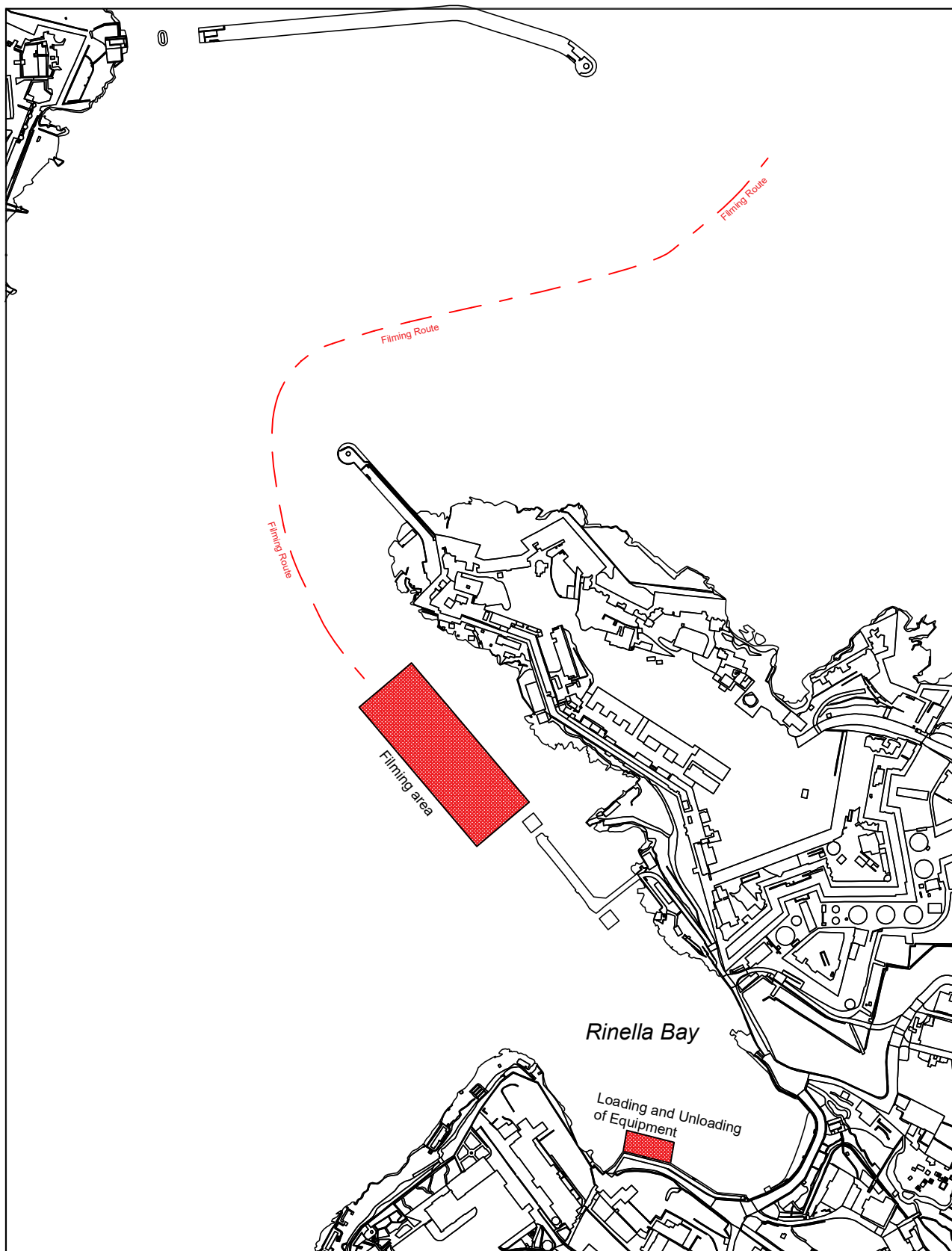
© Transport Malta all rights reserved

DISCLAIMER

Whilst the Ports and Yachting Directorate, Transport Malta has endeavoured to ensure that the material supplied is suitable for the purpose described, it accepts no liability (to the maximum extent permitted by law) for any damage or loss of any nature arising from its use.

The material supplied is used entirely at the Recipient's own risk.

Chart B



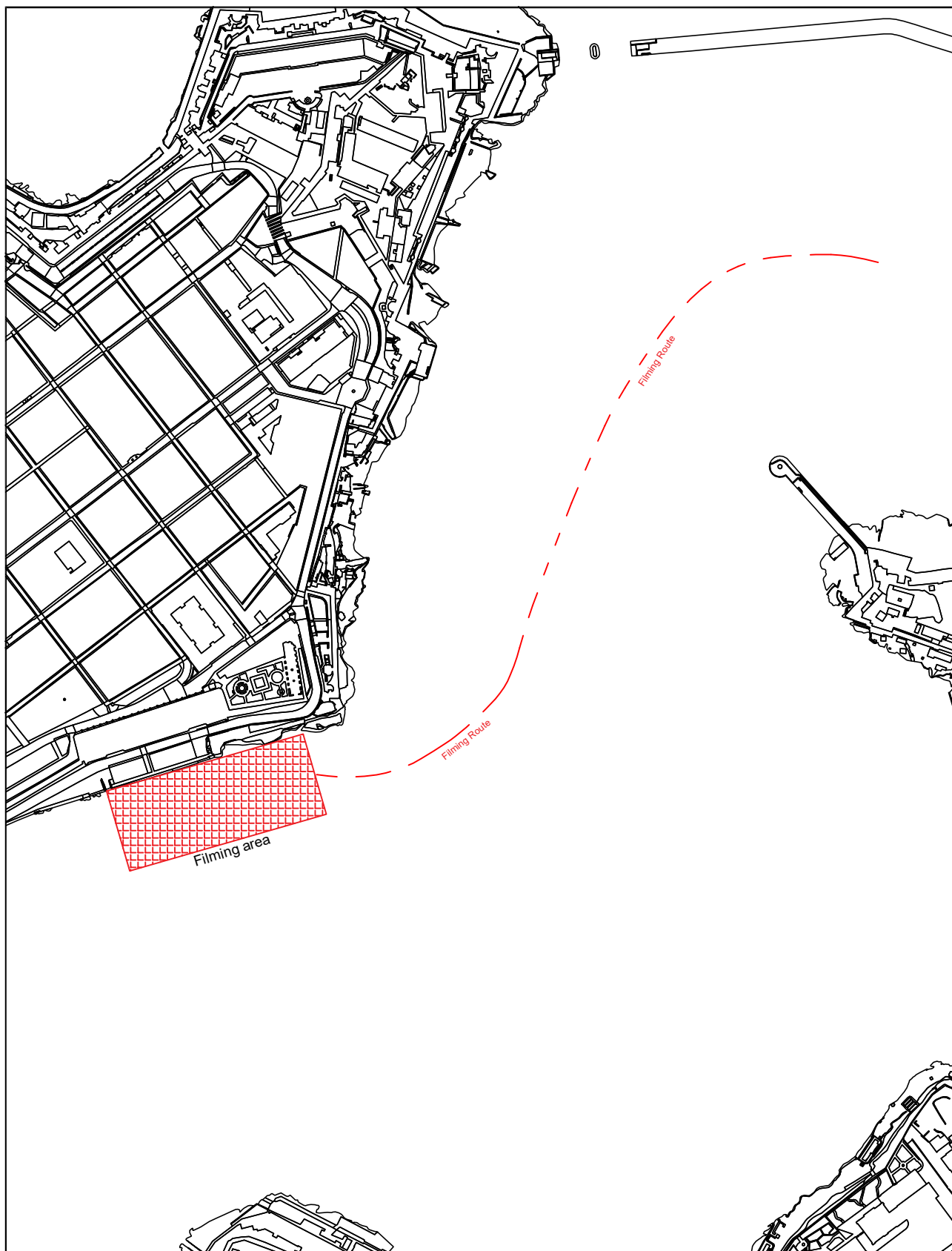
© Transport Malta all rights reserved

DISCLAIMER

Whilst the Ports and Yachting Directorate, Transport Malta has endeavoured to ensure that the material supplied is suitable for the purpose described, it accepts no liability (to the maximum extent permitted by law) for any damage or loss of any nature arising from its use.

The material supplied is used entirely at the Recipient's own risk.

Chart C



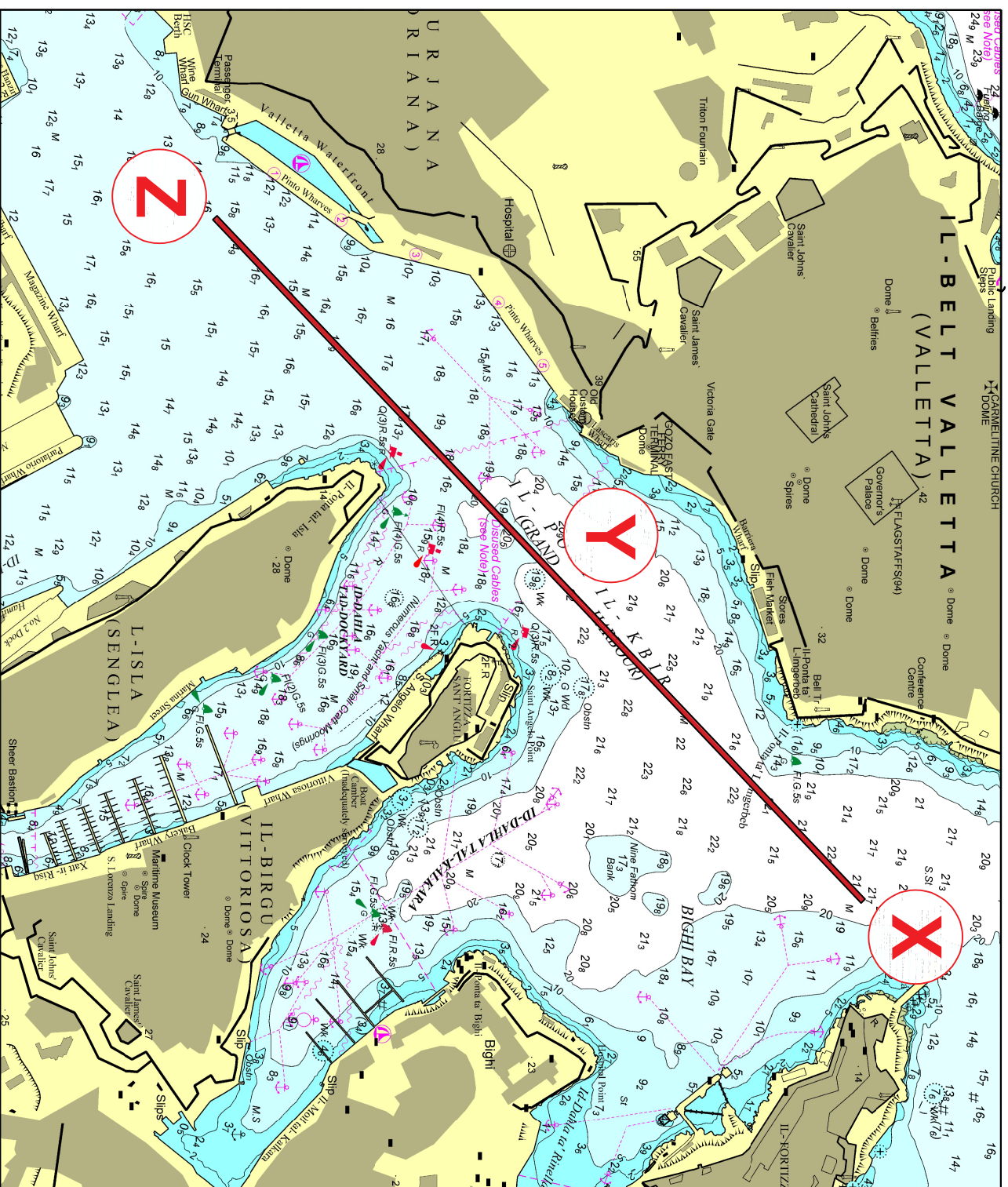
© Transport Malta all rights reserved

DISCLAIMER

Whilst the Ports and Yachting Directorate, Transport Malta has endeavoured to ensure that the material supplied is suitable for the purpose described, it accepts no liability (to the maximum extent permitted by law) for any damage or loss of any nature arising from its use.

The material supplied is used entirely at the Recipient's own risk.

Chart D



© Transport Malta all rights reserved

DISCLAIMER

Whilst the Ports and Yachting Directorate, Transport Malta has endeavoured to ensure that the material supplied is suitable for the purpose described, it accepts no liability (to the maximum extent permitted by law) for any damage or loss of any nature arising from its use.

The material supplied is used entirely at the Recipient's own risk.

Chart E