



PORTS AND YACHTING DIRECTORATE

## LOCAL NOTICE TO MARINERS N° 174 of 2025

Our Ref: **TM/PYD/132/89**

22 September 2025



**Transport Malta**

Malta Transport Centre,  
Triq Pantar, Hal Lija, LJA 2021  
Malta

Tel: (356) 2122 2203  
Fax: (356) 2125 0365  
Email: [info.tm@transport.gov.mt](mailto:info.tm@transport.gov.mt)

[www.transport.gov.mt](http://www.transport.gov.mt)

### **Filming from different localities - Breath Deep**

The Ports and Yachting Directorate, Transport Malta, notifies all mariners and sea vessel operators that filming activities will take place at different localities.

Filming will take place on the listed dates and time at each of the following locality.

#### **South Quay - Ċirkewwa**

Filming is scheduled to be carried out on between Thursday 25<sup>th</sup> September 2025 and Wednesday 8<sup>th</sup> October 2025, from South Quay – Ċirkewwa as shown on the attached Chart A.

#### **Out at sea – Paradise Bay**

Filming is scheduled to be carried out at sea (near Paradise Bay), between Monday 29<sup>th</sup> September 2025 and Wednesday 8<sup>th</sup> October 2025 as shown on the attached Chart B.

#### **Out at sea – Ras il-Waħx**

Filming is scheduled to be carried out at sea (near Ras il-Waħx), between Monday 29<sup>th</sup> September 2025 and Wednesday 8<sup>th</sup> October 2025, as shown on the attached Chart C.

#### **Out at sea – Għadira Bay**

Filming is scheduled to be carried out at sea (near Għadira Bay), between Monday 29<sup>th</sup> September 2025 and Wednesday 8<sup>th</sup> October 2025, as shown on the attached Chart D.

#### **Out at sea – Ras il-Qammieħ**

Filming is scheduled to be carried out at sea (near Ras il-Qammieħ), between Monday 29<sup>th</sup> September 2025 and Wednesday 8<sup>th</sup> October 2025, as shown on the attached Chart E.



Transport Malta

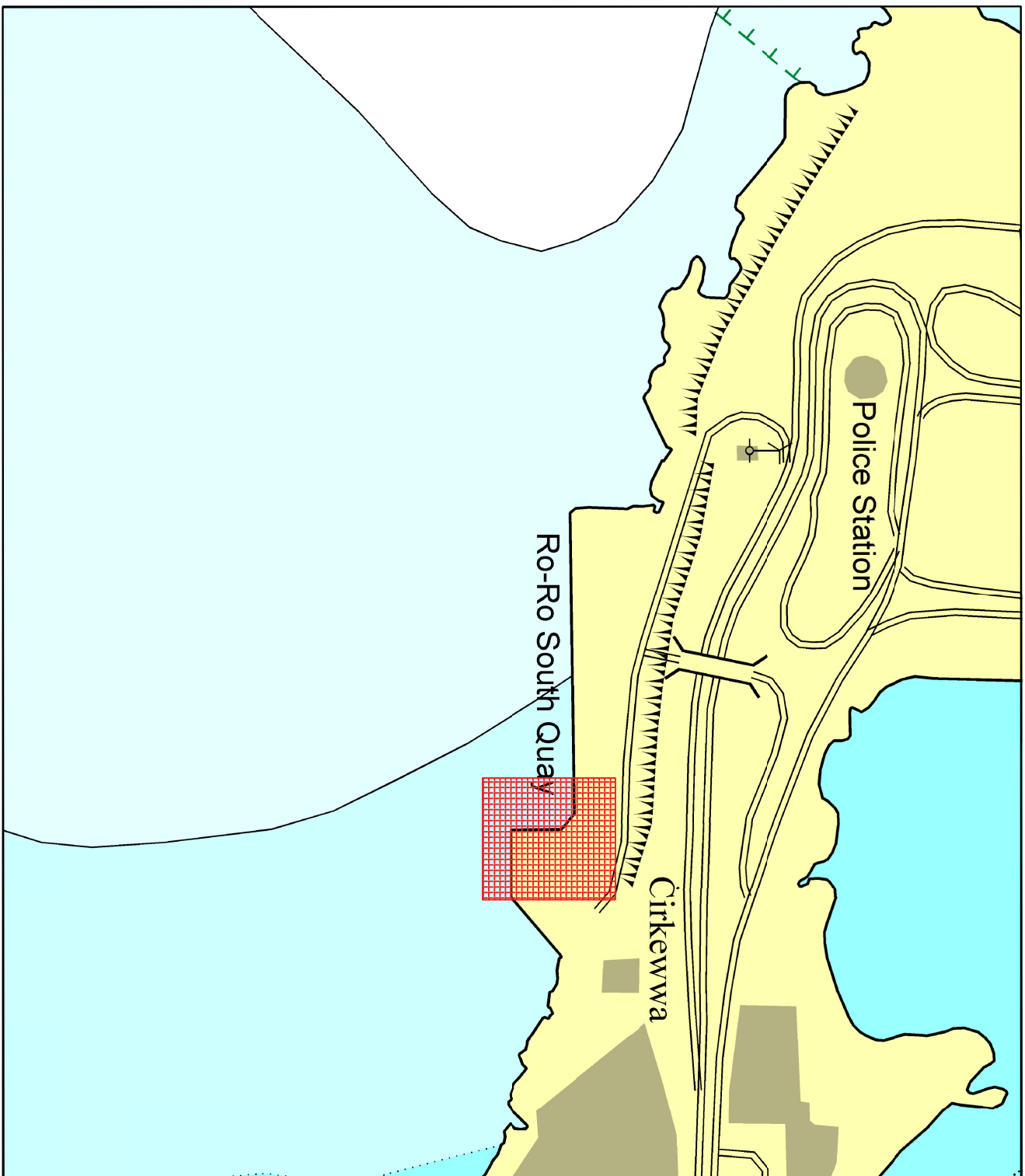
During the days and time mentioned above, for the safety of the swimmers and divers, mariners are advised to keep a sharp lookout and navigate at slow speed (no wake).

No loitering is being requested. Consequently, Masters and operators of vessels transiting these areas, shall not moor or drop anchor and must remain underway.

Mariners navigating in the vicinity of the indicated area on the mentioned dates and time are to keep watch on VHF Channel **12 / 16** and are to cooperate with the filming crew and/or any enforcement officers in the areas.

Any instructions issued on VHF channel **12 / 16** by Valletta VTS are to be complied with.

Charts affected: **BA 211, 194, 2537.**



© Transport Malta all rights reserved

#### DISCLAIMER

Whilst the Ports and Yachting Directorate, Transport Malta has endeavoured to ensure that the material supplied is suitable for the purpose described, it accepts no liability (to the maximum extent permitted by law) for any damage or loss of any nature arising from its use.

The material supplied is used entirely at the Recipient's own risk.

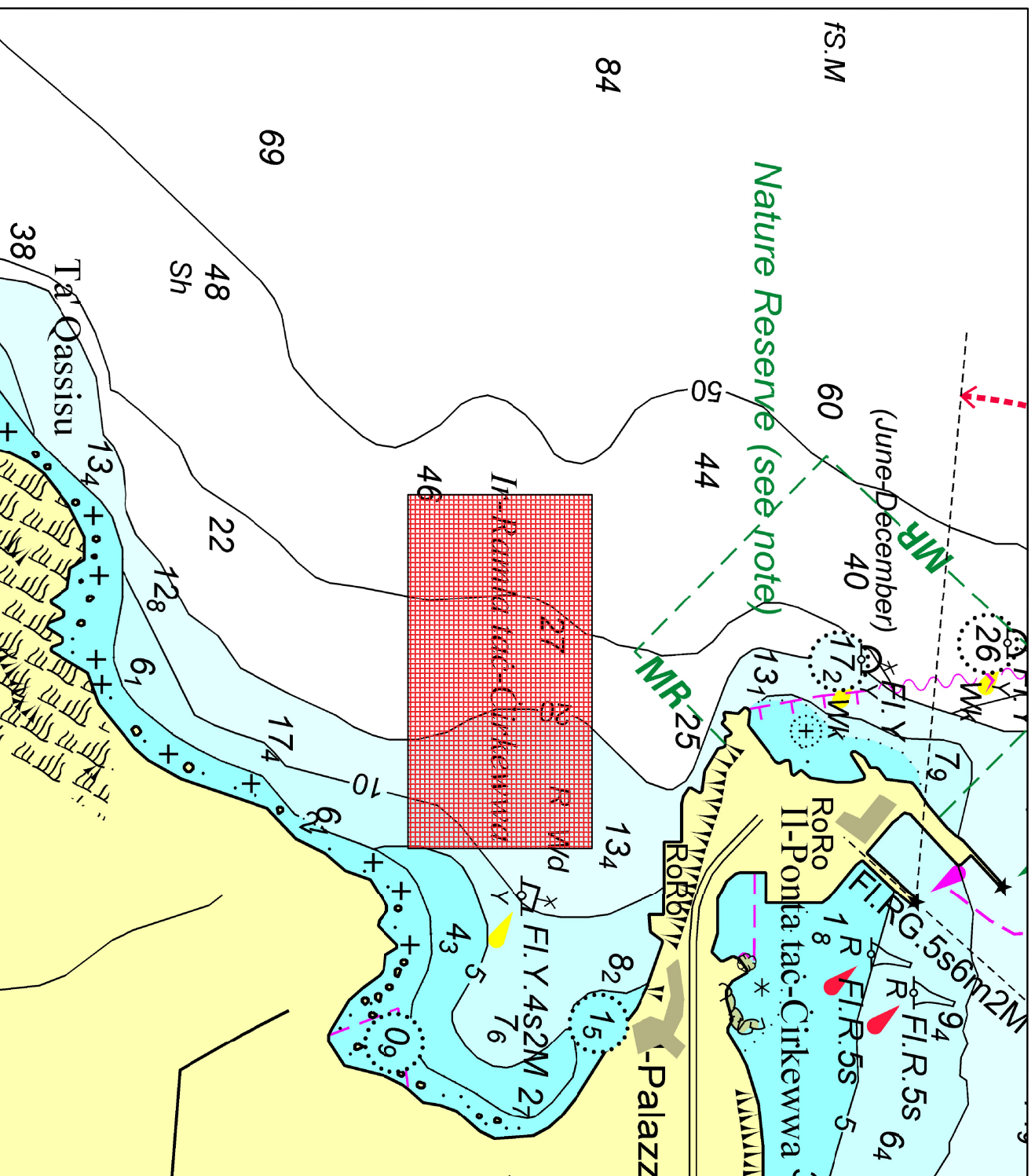
Chart A

© Transport Malta all rights reserved

DISCLAIMER

Whilst the Ports and Yachting Directorate, Transport Malta has endeavoured to ensure that the material supplied is suitable for the purpose described, it accepts no liability (to the maximum extent permitted by law) for any damage or loss of any nature arising from its use.

The material supplied is used entirely at the Recipient's own risk.

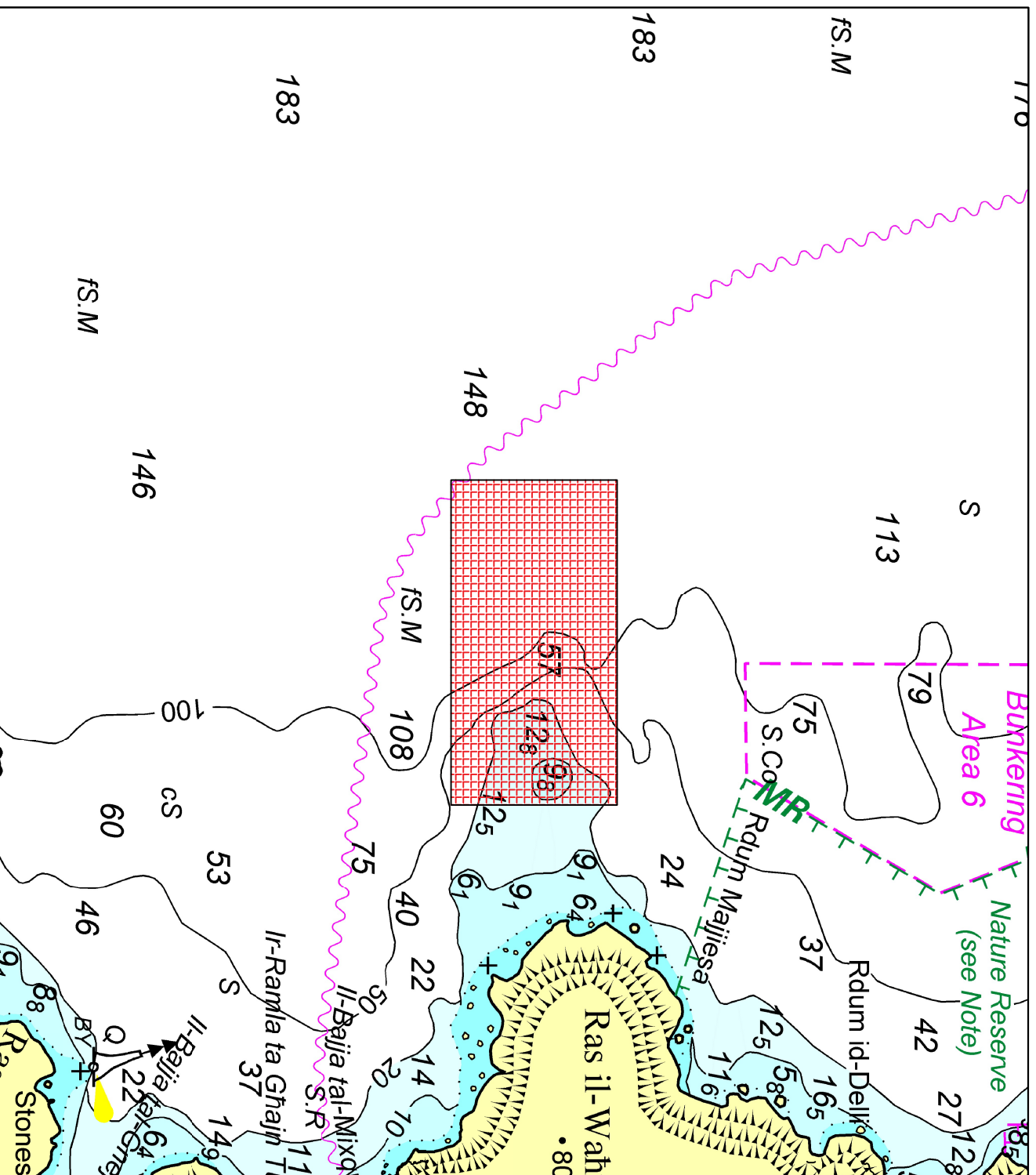


The diagram illustrates a geometric decomposition. At the top, a 2D shape (a rectangle with a semi-circle on the right) is shown being split into a 1D shape (a horizontal line segment) and a 2D shape (a rectangle with a semi-circle on the right). Below this, a 3D shape (a rectangular prism) is shown.



DISCLAIMER

The material supplied is used entirely at the Recipient's own risk.



01010101



© Transport Malta all rights reserved

**DISCLAIMER**

Whilst the Ports and Yachting Directorate, Transport Malta has endeavoured to ensure that the material supplied is suitable for the purpose described, it accepts no liability (to the maximum extent permitted by law) for any damage or loss of any nature arising from its use.

The material supplied is used entirely at the Recipient's own risk.

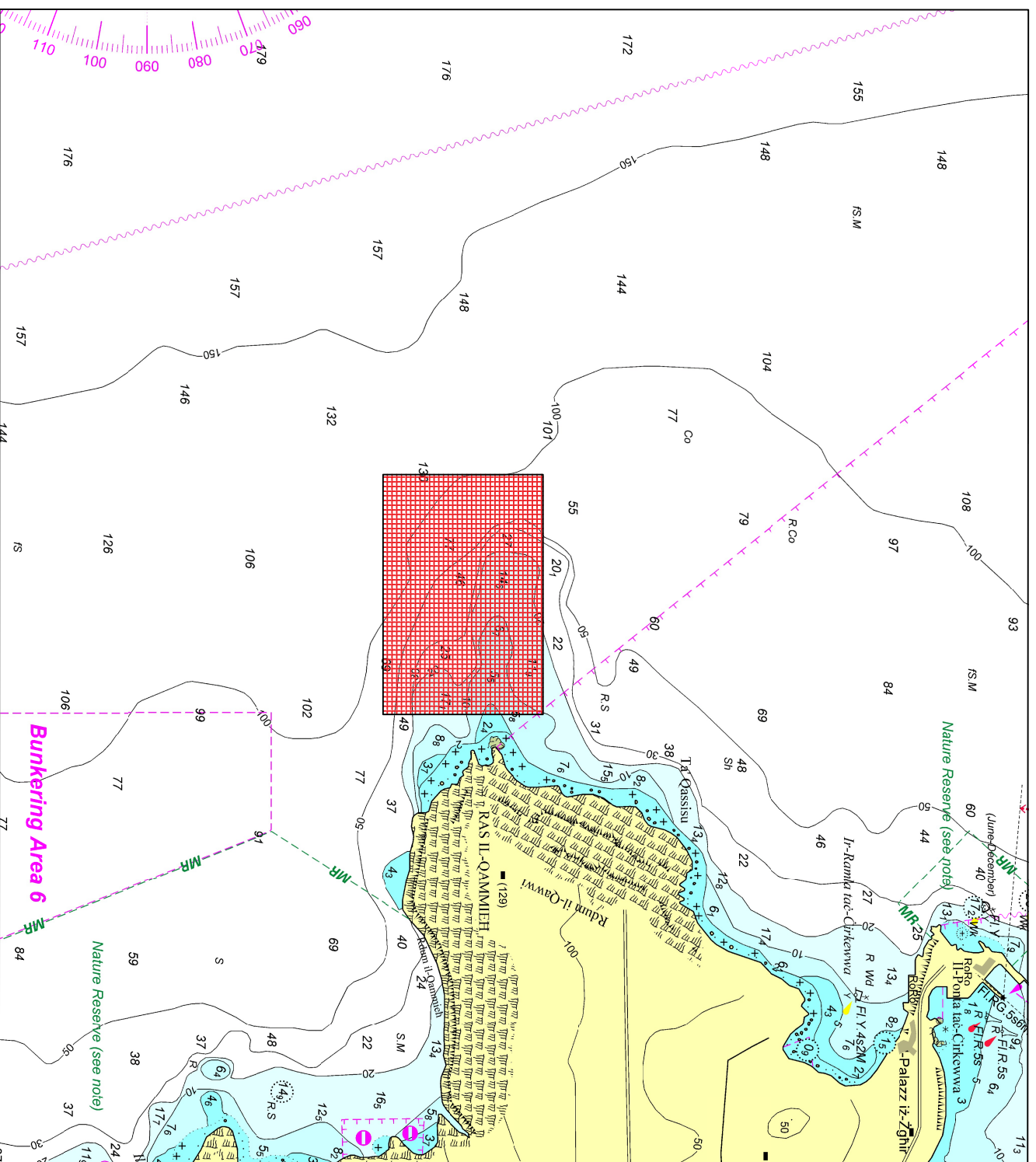


Chart E