



PORTS AND YACHTING DIRECTORATE

LOCAL NOTICE TO MARINERS N° 173 of 2025

Our Ref: **TM/PYD/83/97**

22 September 2025



Transport Malta

Malta Transport Centre
Marsa, MRS 1917
Malta

Tel: (356) 2122 2203
Fax: (356) 2125 0365
Email: info.tm@transport.gov.mt

www.transport.gov.mt

Roberts Cup – Como to Malta Seaplane Rally - 2025

The Ports and Yachting Directorate, Transport Malta, notifies that the Malta Seaplanes Association in collaboration with Aero Club Como will be organising the Roberts Cup – Como to Malta Seaplanes Rally between Saturday 4th October 2025 and Sunday 5th October 2025. Part of the rally will be held in the Grand Harbour, Qalet Marku and Il-Fliegu ta' Kemmuna.

The flying displays over the Grand Harbour will be held as follows:

Within the display area A, B, C and D, as shown on the attached chart A.

POSITION	LATITUDE (N)	LONGITUDE (E)
A	35° 53'.578	014° 30'.785
B	35° 53'.509	014° 30'.847
C	35° 53'.213	014° 30'.550
D	35° 53'.284	014° 30'.490

Saturday 4 th October 2025	between 1000 hours and 1300 hours and between 1600 hours and 1800 hours.
Sunday 5 th October 2025	between 1000 hours and 1300 hours and between 1600 hours and 1800 hours.

The flying displays over Qalet Marku and Il-Fliegu ta' Kemmuna will be held as follows:

Within the display area E, F, G and H at Qalet Marku and I, J, K and L at Il-Fliegu ta' Kemmuna, as shown on the attached charts B and C.

POSITION	LATITUDE (N)	LONGITUDE (E)
E	35° 57'.315	014° 26'.950
F	35° 56'.850	014° 27'.483
G	35° 57'.017	014° 27'.550
H	35° 57'.483	014° 27'.183
I	35° 59'.783	014° 21'.400
J	35° 59'.467	014° 20'.450
K	35° 59'.717	014° 20'.283
L	36° 00'.000	014° 21'.200



Transport Malta

Saturday 4th October 2025

between 1500 hours and 1700 hours and

Sunday 5th October 2025

between 1500 hours and 1700 hours.

In the event of adverse weather conditions on both days, the events may be postponed until:

Monday 6th October 2025

at the same locations and times.

All timings are in Local Time.

The displays will consist mainly of landing and take-off maneuvers which will be held within the above-mentioned areas. Mariners are hereby informed that during the dates and times mentioned traffic movements will be restricted.

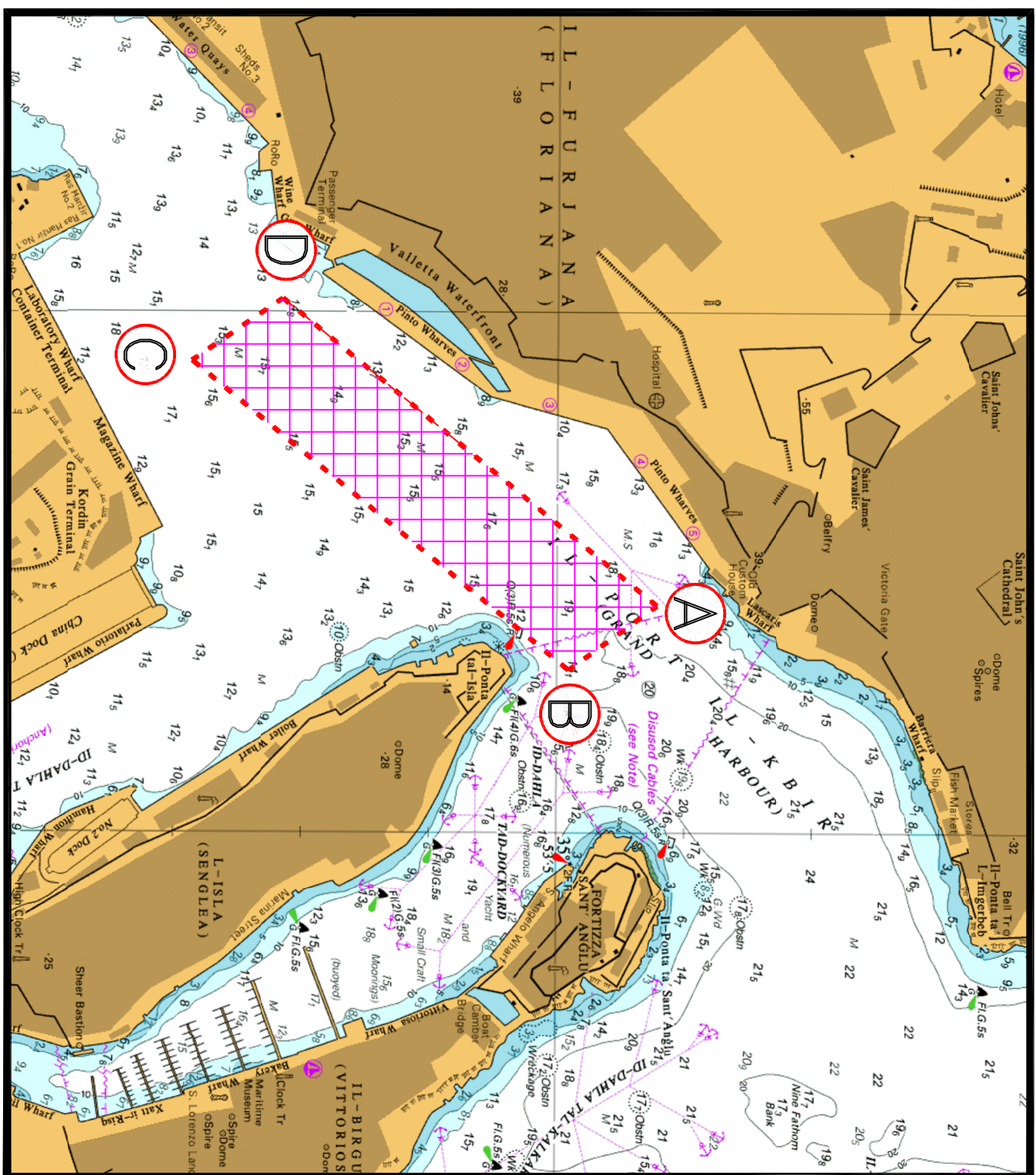
Valletta VTS will be managing the movement of vessels, on VHF channel 12 within the Grand Harbour.

Mariners are advised to keep a sharp lookout and navigate with caution when in the vicinity, on the stipulated dates and times.

They are to cooperate with the organisers and to comply with any instructions issued on VHF channel 12 and/or 16 by Valletta VTS and by any Enforcement Personnel on site.

Positions are in WGS 84 Datum.

Chart affected: BA Charts 211, 177, 2537, 2538.



© British Crown Copyright 1970, 1983, 1986, 1988, 1999, 2000
All rights reserved.

The UK Hydrographic Office makes the accompanying data
Available to Malta Maritime Authority (Transport Malta)
Under the terms and conditions of agreement HO 1427/020930/01.

DISCLAIMER

Whilst the UK Hydrographic Office has endeavoured to ensure
That the material supplied is suitable for the purpose described,
it accepts no liability (to the maximum extent permitted by law)
For any damage or loss of any nature arising from its use.
The material supplied is used entirely at the Recipient's own risk.

Chart A

The UK Hydrographic Office makes the accompanying data
Available to Malta Maritime Authority (Transport Malta)
Under the terms and conditions of agreement HO 1427/020930/01.

DISCLAIMER

Whilst the UK Hydrographic Office has endeavoured to ensure
That the material supplied is suitable for the purpose described,
It accepts no liability (to the maximum extent permitted by law)
For any damage or loss of any nature arising from its use.
The material supplied is used entirely at the Recipient's own risk.

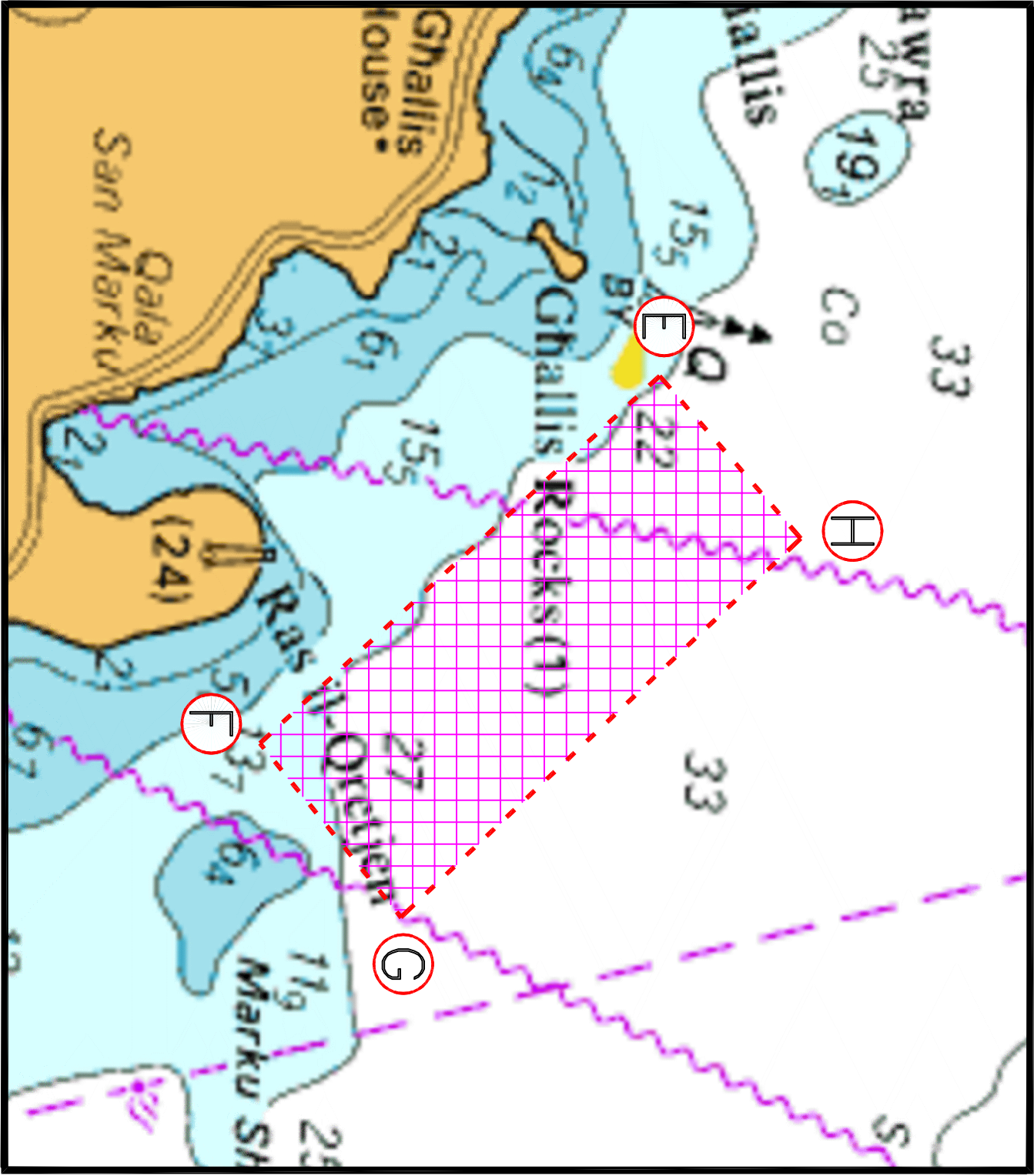


Chart B

