



PORTS AND YACHTING DIRECTORATE

## LOCAL NOTICE TO MARINERS N° 167 of 2025

Our Ref: **TM/PYD/220/94 Vol II**

17 September 2025



**Transport Malta**

Malta Transport Centre,  
Triq Pantar, Hal Lija, LJA 2021  
Malta

Tel: (356) 2122 2203  
Fax: (356) 2125 0365  
Email: [info.tm@transport.gov.mt](mailto:info.tm@transport.gov.mt)

[www.transport.gov.mt](http://www.transport.gov.mt)

### Vikings Sailing Club Regattas outside Marsamxett Harbour

The Ports and Yachting Directorate, Transport Malta notifies all mariners that the 'Vikings Sailing Club' will be organising sailing regattas outside Marsamxett Harbour, within area A formed by joining the points A, B, C and D, as shown on the attached chart A.

Position	Latitude (N)	Longitude (E)
A	35° 54'.649	014° 31'.155
B	35° 56'.131	014° 31'.807
C	35° 57'.283	014° 30'.760
D	35° 56'.419	014° 29'.546

The activities will be held as follows:

On Saturday 4<sup>th</sup> October 2025, between 0830 hours and 1800 hours and  
On Sunday 5<sup>th</sup> October 2025, between 0830 hours and 1800 hours.

Orange inflatable marker buoys to indicate the racecourse within the above-mentioned areas will be laid at the start time indicated above and will be removed by 1800 hours, on each day of the races.

All vessels that are not involved in the activity are to keep well clear from the competing sailing vessels and are to follow any instructions given by the race officials, the support vessels and any enforcement officers in the area.

If due to adverse weather conditions the activity cannot be held as stated above it will be held inside Marsamxett Harbour within area B formed by joining the points V, W, X, Y and Z, as shown on the attached chart B, on the same dates and times.



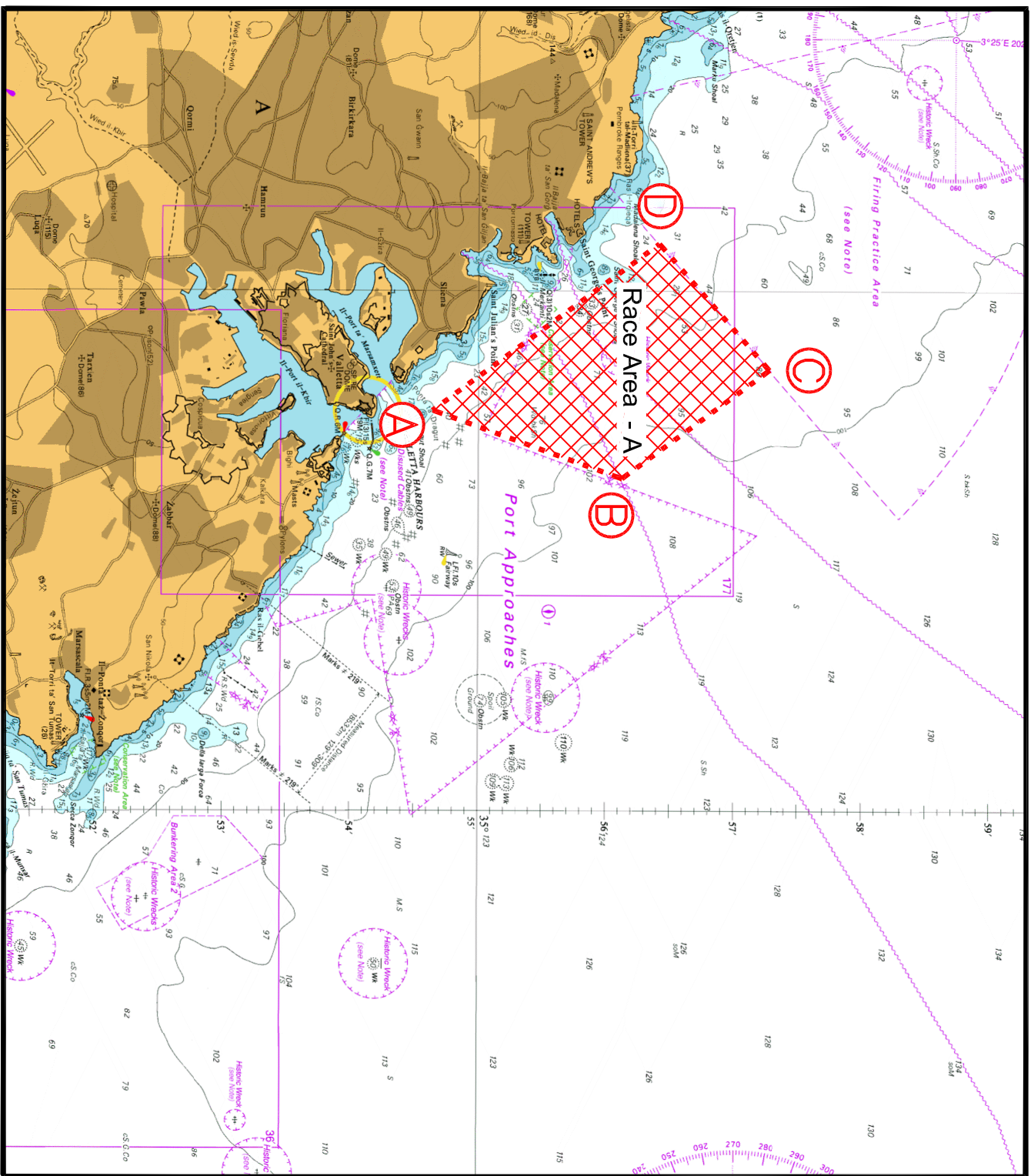
Transport Malta

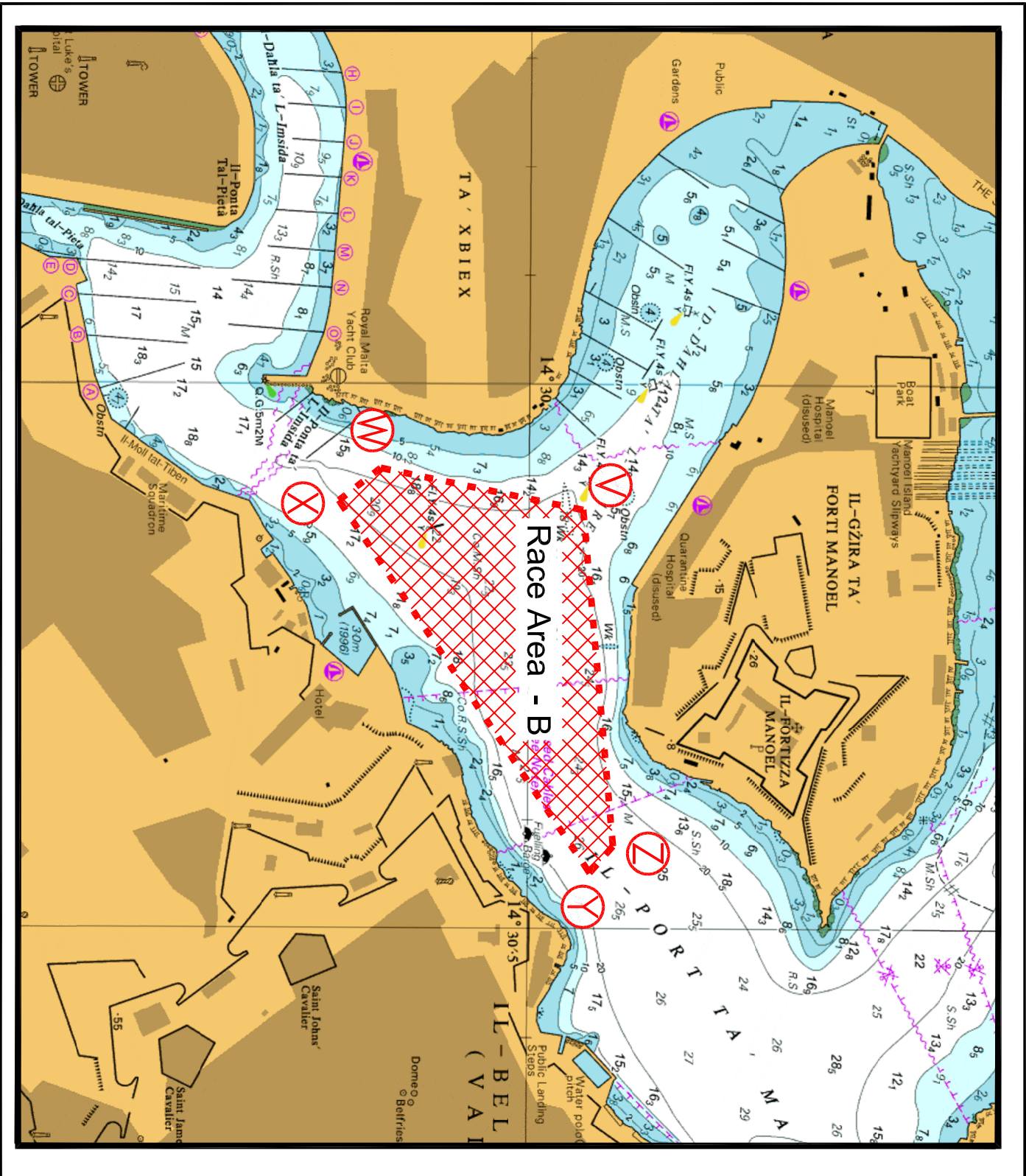
Position	Latitude (N)	Longitude (E)
V	35° 54'.041	014° 30'.119
W	35° 53'.889	014° 30'.081
X	35° 53'.858	014° 30'.111
Y	35° 54'.047	014° 30'.452
Z	35° 54'.064	014° 30'.428

Mariners navigating in the vicinity are to note the above, keep watch on VHF Channel 12 and/or 16 and are to give the areas indicated a wide berth. They are further instructed to fully comply with Rule 18 (COLREGS 1972).

Any instructions issued on VHF channel 12 and/or 16 by Valletta VTS are to be complied with.

Charts affected: **BA 177, 2538, 2537.**





© British Crown Copyright 1970, 1983, 1986, 1988, 1999, 2000  
All rights reserved.

The UK Hydrographic Office makes the accompanying data  
Available to Malta Maritime Authority (Transport Malta)  
Under the terms and conditions of agreement HO 1427/020930/01.

#### DISCLAIMER

Whilst the UK Hydrographic Office has endeavoured to ensure  
That the material supplied is suitable for the purpose described,  
it accepts no liability (to the maximum extent permitted by law)  
For any damage or loss of any nature arising from its use.  
The material supplied is used entirely at the Recipient's own risk.

# Chart B