



PORTS AND YACHTING DIRECTORATE

LOCAL NOTICE TO MARINERS N° 157 of 2025

Our Ref: **TM/PYD/132/89**

9 September 2025



Transport Malta

Malta Transport Centre,
Triq Pantar, Hal Lija, LJA 2021
Malta

Tel: (356) 2122 2203
Fax: (356) 2125 0365
Email: info.tm@transport.gov.mt

www.transport.gov.mt

Filming from different localities – “Psyche”

The Ports and Yachting Directorate, Transport Malta, notifies all mariners and sea vessel operators that filming activities will take place at different localities.

Filming will take place on the listed dates and time at each of the following locality.

Mgarr Harbour

Filming is scheduled to be carried out on Monday 15th September 2025 between 0800 hours and 1500 hours, from shooting area A1, and between 1500 hours and 1800 hours from shooting area A2 as shown on the attached Chart A.

Out at sea

Filming is scheduled to be carried out on Tuesday 16th and Thursday 18th September 2025 between 0730 hours and 1800 hours, from shooting areas B1 and B2, as shown on the attached Chart B.

On the forshore of East and West of Comino

Filming is scheduled to be carried out on Wednesday 17th September 2025 between 0730 hours and 1800 hours, from points C and D, as shown on the attached charts C and D.

During the days and time mentioned above, for the safety of the swimmers and divers, mariners are advised to keep a sharp lookout and navigate at slow speed (no wake).

No loitering is being requested. Consequently, Masters and operators of vessels transiting these areas, shall not moor or drop anchor and must remain underway.



Transport Malta

Mariners navigating in the vicinity of the indicated area on the mentioned dates and time are to keep watch on VHF Channel **12 / 16** and are to cooperate with the filming crew and/or any enforcement officers in the areas.

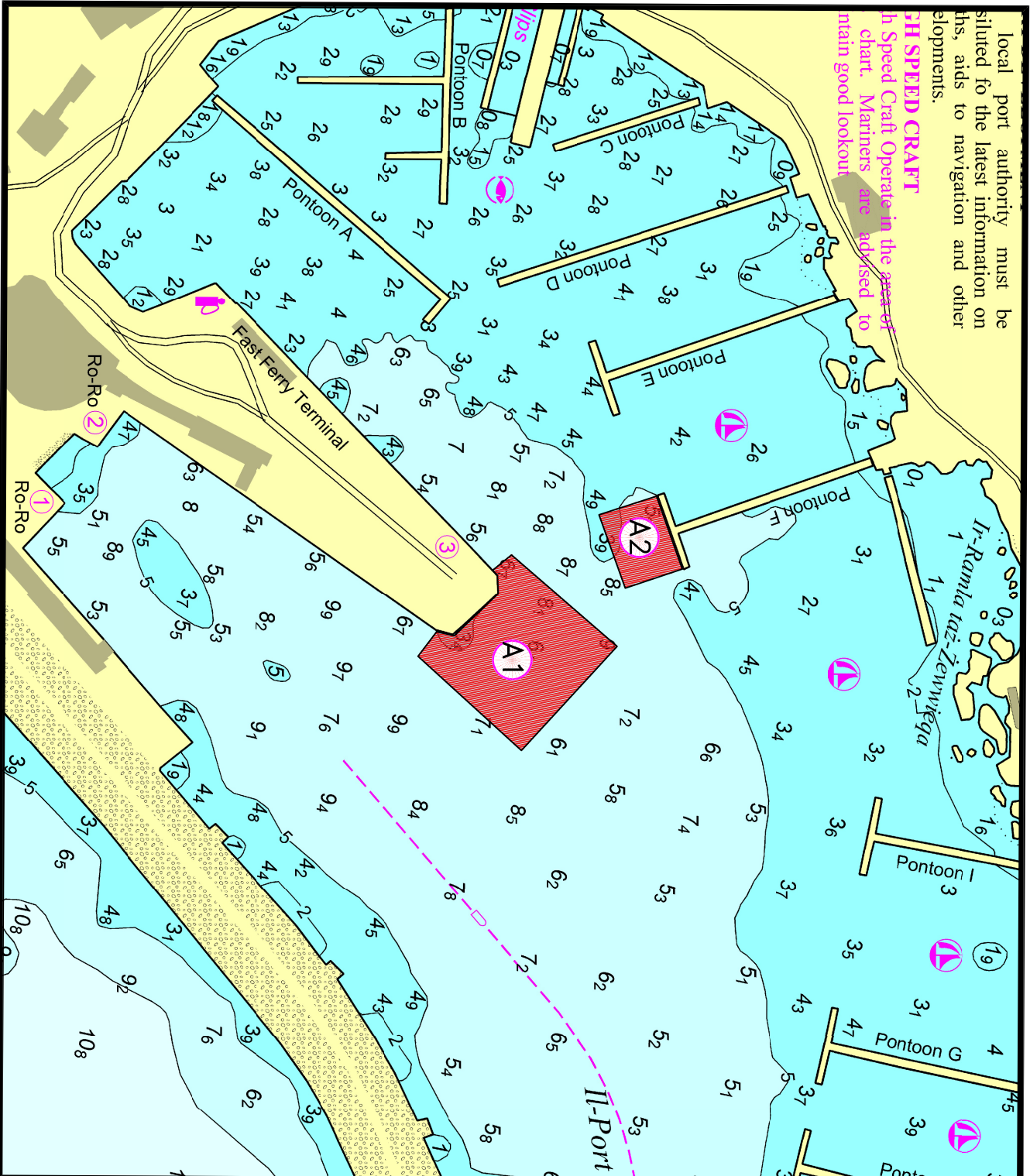
Any instructions issued on VHF channel **12 / 16** by Valletta VTS are to be complied with.

Charts affected: **BA 211, 194, 2537.**

local port authority must be consulted for the latest information on this, aids to navigation and other elements.

SHIP SPEED CRAFT

Ship Speed Craft Operate in the area of this chart. Mariners are advised to maintain good lookout.



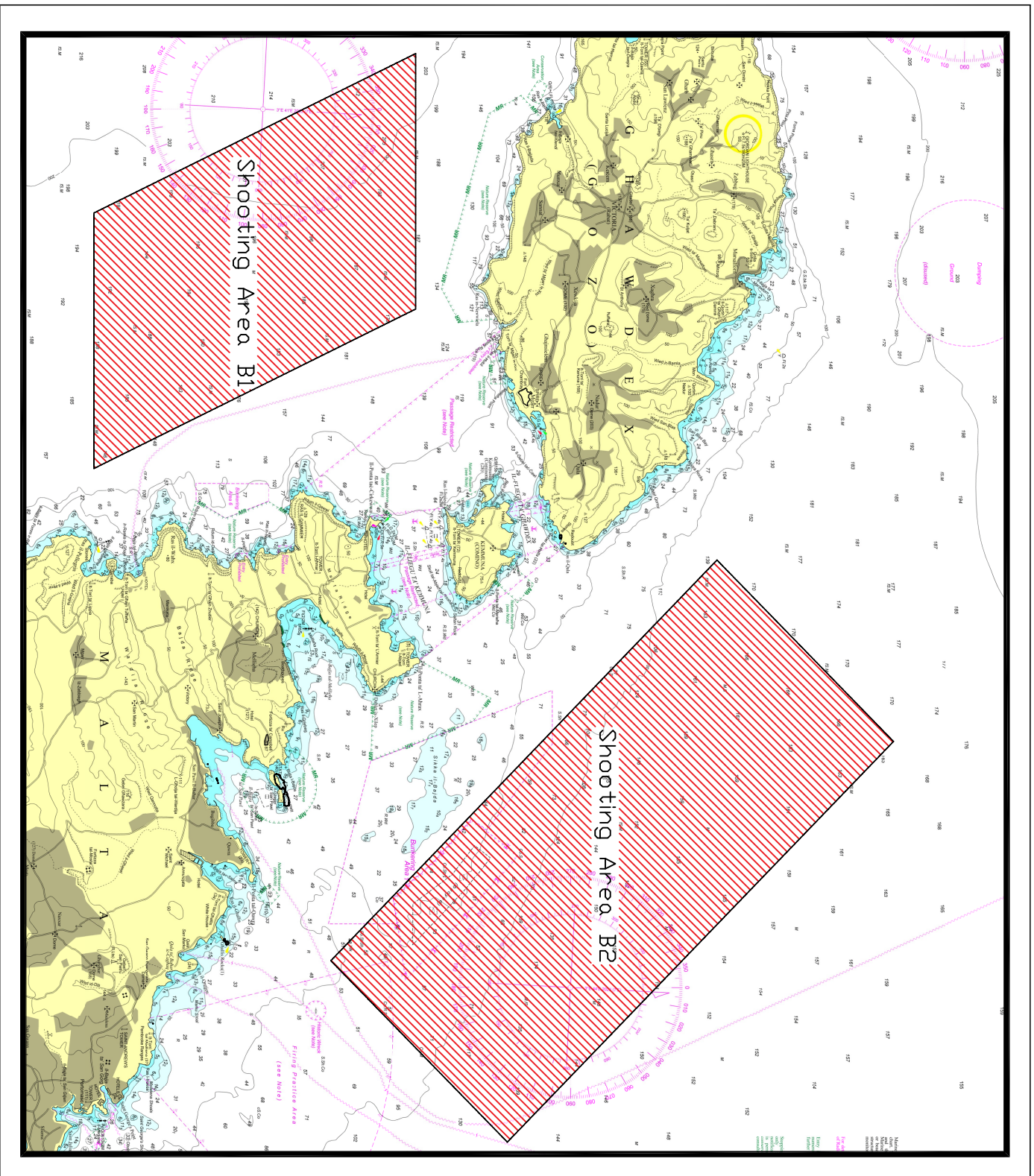
© British Crown Copyright 1970, 1983, 1986, 1988, 1999, 2000
All rights reserved.

The UK Hydrographic Office makes the accompanying data available to Malta Maritime Authority (Transport Malta) under the terms and conditions of agreement HO 1427/020930/01.

DISCLAIMER

Whilst the UK Hydrographic Office has endeavoured to ensure that the material supplied is suitable for the purpose described, it accepts no liability (to the maximum extent permitted by law) for any damage or loss of any nature arising from its use. The material supplied is used entirely at the Recipient's own risk.

Chart A



© British Crown Copyright 1970, 1983, 1986, 1988, 1999, 2000
All rights reserved.

The UK Hydrographic Office makes the accompanying data
Available to Malta Maritime Authority (Transport Malta)
Under the terms and conditions of agreement HO 1427/020930/01.

DISCLAIMER

Whilst the UK Hydrographic Office has endeavoured to ensure
That the material supplied is suitable for the purpose described,
It accepts no liability (to the maximum extent permitted by law)
For any damage or loss of any nature arising from its use.
The material supplied is used entirely at the Recipient's own risk.

