



PORTS AND YACHTING DIRECTORATE

## LOCAL NOTICE TO MARINERS N° 138 of 2025

Our Ref: **TM/PYD/83/97**

20 August 2025



**Transport Malta**

Malta Transport Centre  
Marsa, MRS 1917  
Malta

Tel: (356) 2122 2203  
Fax: (356) 2125 0365  
Email: [info.tm@transport.gov.mt](mailto:info.tm@transport.gov.mt)

[www.transport.gov.mt](http://www.transport.gov.mt)

### Light Drone Show - Grand Harbour

The Ports and Yachting Directorate, Transport Malta, notifies mariners that a Light Drone Show displays, will be held inside the Grand Harbour.

The Light Drone Show displays will be held in the area as follows.

Light Drone flight rehearsals will happen on Thursday 4<sup>th</sup> September from 2300 till 0300 of the 5<sup>th</sup> of September 2025.

The Light Drone display will be held on Friday 5<sup>th</sup> September 2025 from 2145 till 2215.

POSITION	LATITUDE (N)	LONGITUDE (E)
A	35° 53'.314	014° 30'.464
B	35° 53'.249	014° 30'.571
C	35° 53'.384	014° 30'.691
D	35° 53'.449	014° 30'.584
E	35° 53'.447	014° 30'.610
F	35° 53'.584	014° 30'.677
G	35° 53'.410	014° 30'.671
H	35° 53'.599	014° 30'.740

All timings are in Local Time.

Mariners are hereby directed to avoid transiting in the above-mentioned area to the extent possible.

Valletta VTS will be managing the movement of vessels, on VHF channel 12 within the Grand Harbour.

Mariners are advised to keep a sharp lookout and navigate with caution when in the vicinity, on the stipulated dates and times.

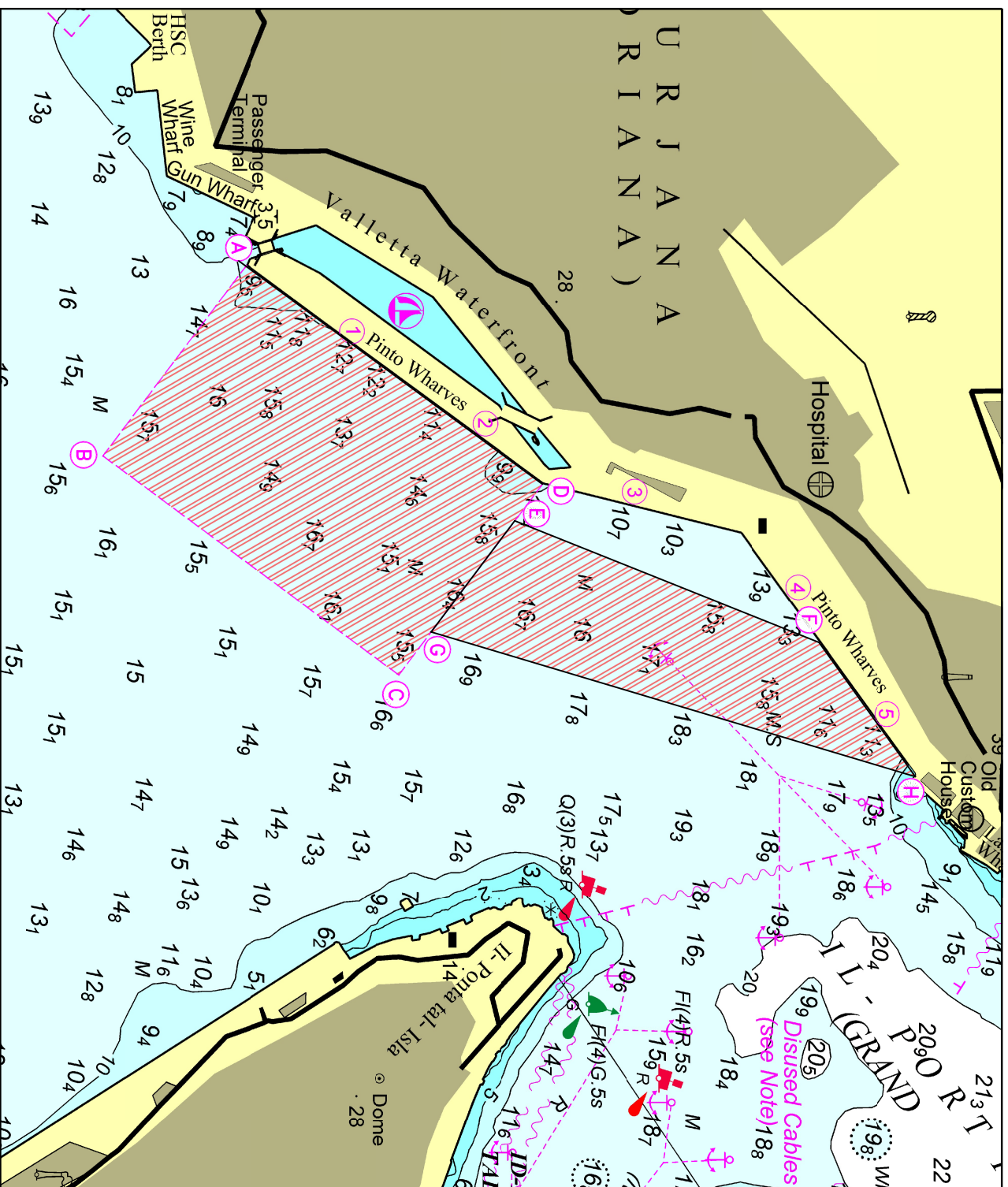
They are to cooperate with the organisers and to comply with any instructions issued on VHF channel 12 and/or 16 by Valletta VTS and by any Enforcement Personnel on site.



Transport Malta

Positions are in WGS 84 Datum.

Chart affected: BA Charts 177.



© Transport Malta all rights reserved

#### DISCLAIMER

Whilst the Ports and Yachting Directorate, Transport Malta has endeavoured to ensure that the material supplied is suitable for the purpose described, it accepts no liability (to the maximum extent permitted by law) for any damage or loss of any nature arising from its use.

The material supplied is used entirely at the Recipient's own risk.