



PORTS AND YACHTING DIRECTORATE



Transport Malta

LOCAL NOTICE TO MARINERS No 122 OF 2025

Our Ref: **TM/PYD/0001/25**

22 July 2025

Malta Transport Centre,
Triq Pantar, Hal Lija, LJA 2021
Malta

Tel: (356) 2122 2203
Fax: (356) 2125 0365
Email: info.tm@transport.gov.mt

www.transport.gov.mt

Geotechnical Investigation and Sediment Sampling at Delimara & Marsaxlokk

The Ports and Yachting Directorate, Transport Malta, notifies Mariners that a geotechnical investigation and sediment sampling will be carried out at Delimara & Marsaxlokk. The investigation will commence on 24th July 2025 and is expected to be completed by 17th August 2025.

The work, which is to be carried out from a flat barge, consists of geotechnical investigation within the areas formed by the imaginary line as shown in the attached charts.

Works in Delimara is scheduled to commence on the 24th July 2025 till the 17th August 2025 within the joining points A, B, C, D, E and F (as shown in the attached Chart A).

Point	LATITUDE (N)	LONGITUDE (E)
A	35° 50'.087	014° 33'.050
B	35° 50'.046	014° 33'.079
C	35° 49'.977	014° 32'.936
D	35° 50'.027	014° 32'.900
E	35° 50'.055	014° 32'.957
F	35° 50'.045	014° 32'.965

Works in Marsaxlokk area is scheduled to commence on the 30th July 2025 till the 6th August 2025 within the joining points W, X, Y and Z (as shown in the attached Chart B).

Point	LATITUDE (N)	LONGITUDE (E)
W	35° 50'.439	014° 32'.735
X	35° 50'.420	014° 32'.782
Y	35° 50'.352	014° 32'.741
Z	35° 50'.370	014° 32'.694

Vessels currently moored within the sampling area of Marsaxlokk (as shown in chart B) are being requested to find an alternative mooring. Any vessels that are left in the area during the stipulated dates, will be removed at the expense of their owner. No liability



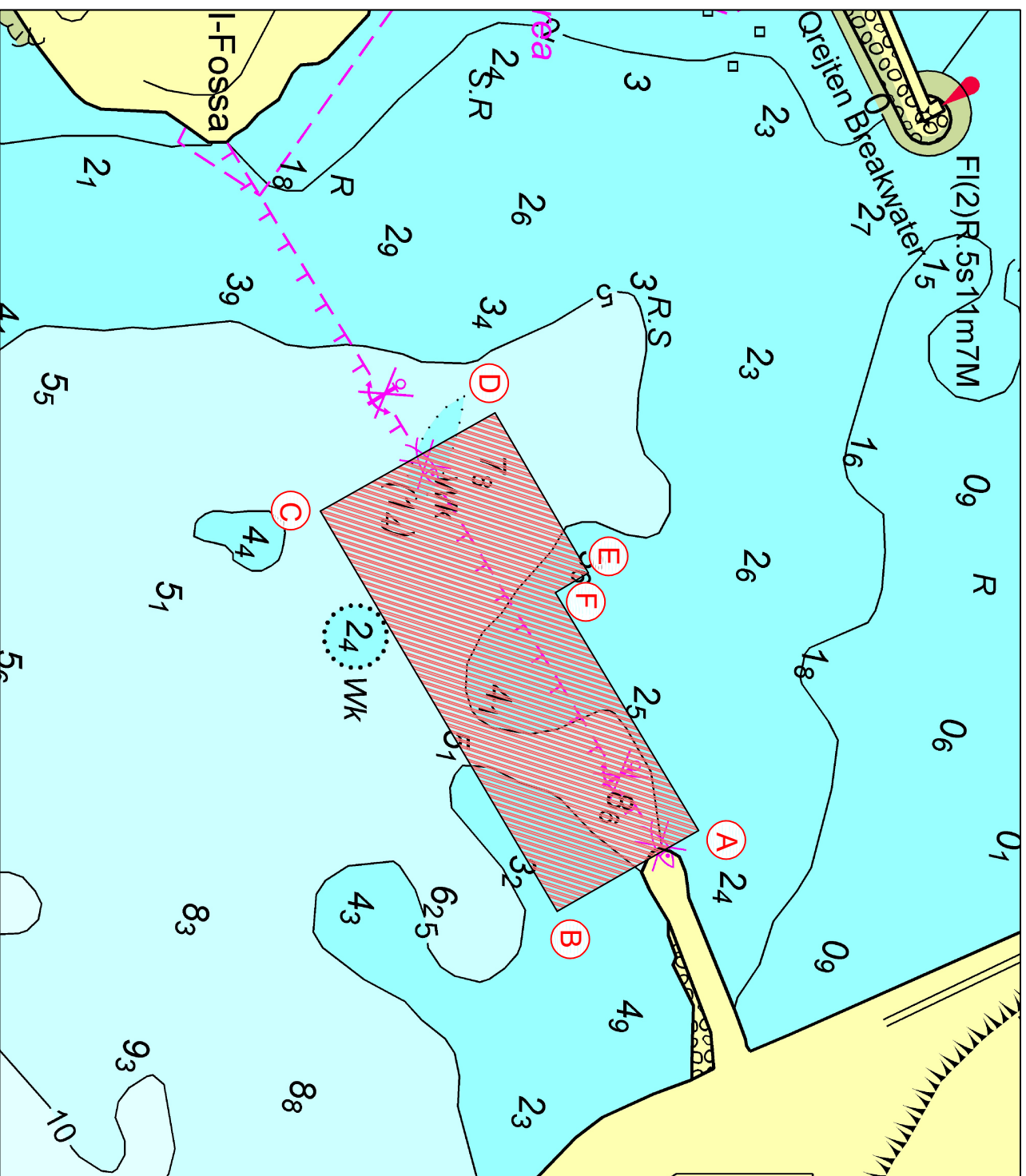
Transport Malta

whatsoever will be accepted by the Authority for any damage that may be caused while removing the said vessels.

The works will be coordinated by Marsaxlokk VTS, the contractor and any Enforcement personnel on site.

Masters and operators of vessels are advised to keep a sharp lookout, navigate with caution and slow speed (no wake) and give the indicated areas a wide berth. They are to comply with any instructions issued on VHF channel 14 / 16 by Valletta VTS and any enforcement agency on site.

Charts affected: **BA 36.**



© Transport Malta all rights reserved

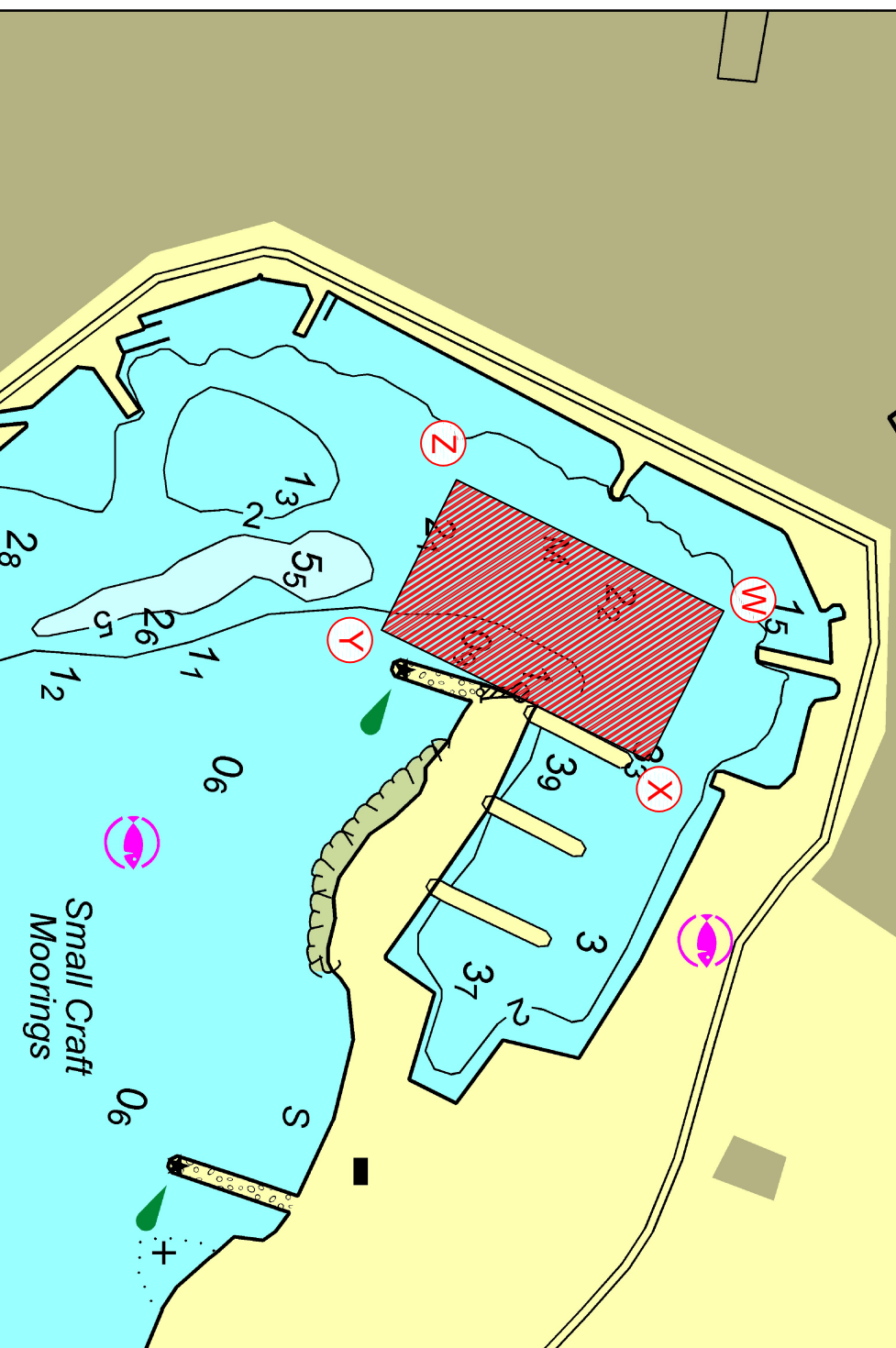
DISCLAIMER

Whilst the Ports and Yachting Directorate, Transport Malta has endeavoured to ensure that the material supplied is suitable for the purpose described, it accepts no liability (to the maximum extent permitted by law) for any damage or loss of any nature arising from its use.

The material supplied is used entirely at the Recipient's own risk.

Chart A

MARSAXLOKK



© Transport Malta all rights reserved

DISCLAIMER

Whilst the Ports and Yachting Directorate, Transport Malta has endeavoured to ensure that the material supplied is suitable for the purpose described, it accepts no liability (to the maximum extent permitted by law) for any damage or loss of any nature arising from its use.

The material supplied is used entirely at the Recipient's own risk.

Chart B