



PORTS AND YACHTING DIRECTORATE

LOCAL NOTICE TO MARINERS N° 117 of 2026

Our Ref: **TM/PYD/109/96**

02 July 2026



Transport Malta

Malta Transport Centre,
Triq Pantar, Hal Lija, LJA 2021
Malta

Tel: (356) 2122 2203
Fax: (356) 2125 0365
Email: info.tm@transport.gov.mt

www.transport.gov.mt

Seabed clean-up near Perched Beach - Bugibba

The Ports and Yachting Directorate, Transport Malta, notifies mariners that a seabed clean-up operation by divers will take place near Perched Beach in Bugibba (as shown in Chart A). The clean-up is scheduled for Saturday 4th July 2026, between 0700 hours and 1400 hours.

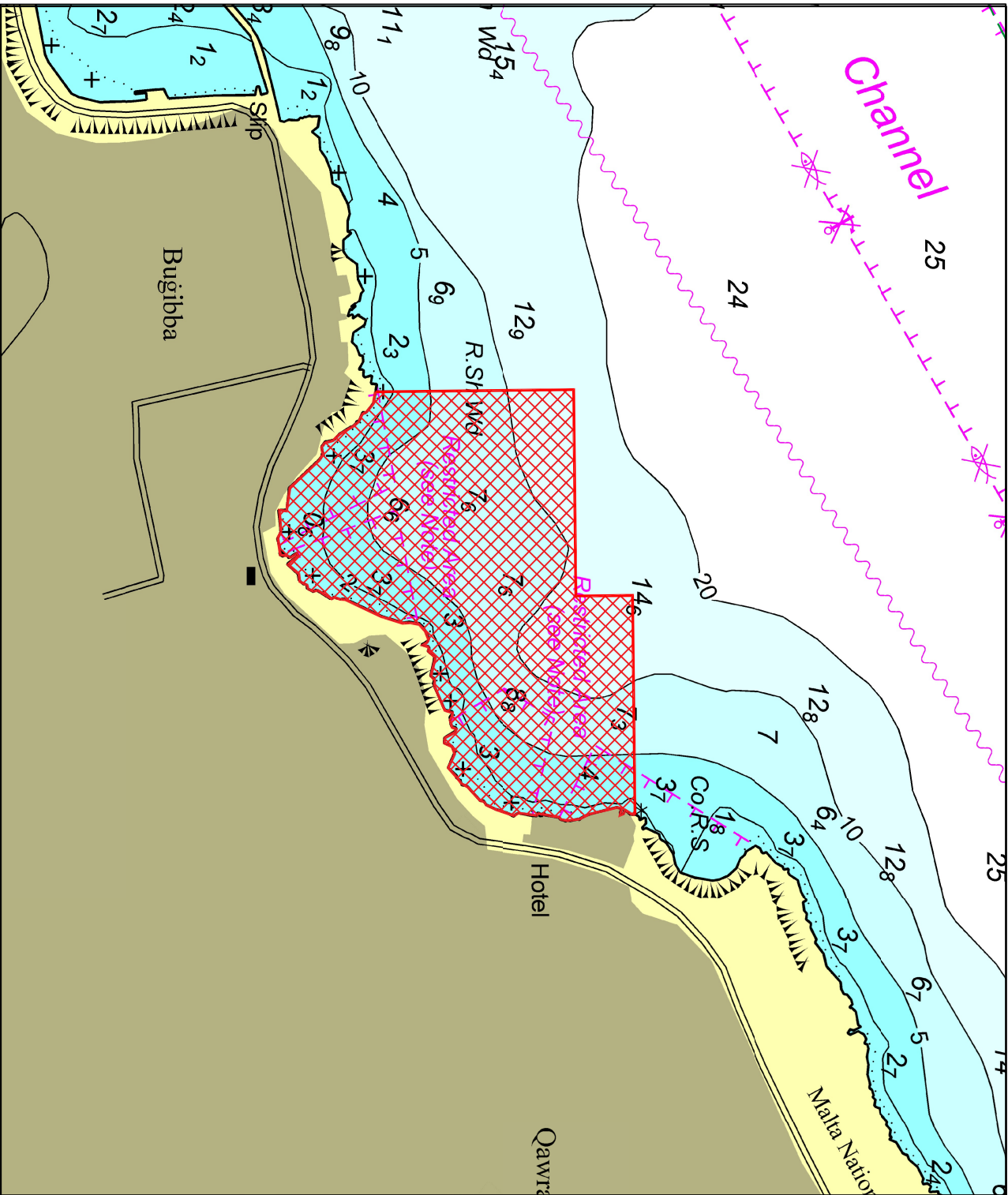
A craft will assist the divers and will display the international code of Signals flag "A".

If, due to unfavourable weather conditions, the seabed clean-up cannot be held in the above-mentioned locality, the seabed clean-up will be held in Marsascala (as shown in the attached chart B), on the same date and time.

Mariners are advised to keep at least 100m safety distance from the above-mentioned area, maintain a sharp lookout and navigate with extreme caution and at slow speed (no wake) when in the vicinity, on the stipulated date and time.

They are to cooperate with the organisers and to comply with any instructions issued on VHF channel 12 and/or 16 by Valletta VTS and by any Enforcement Personnel on site.

Charts affected: **BA 194, 211, 2538**



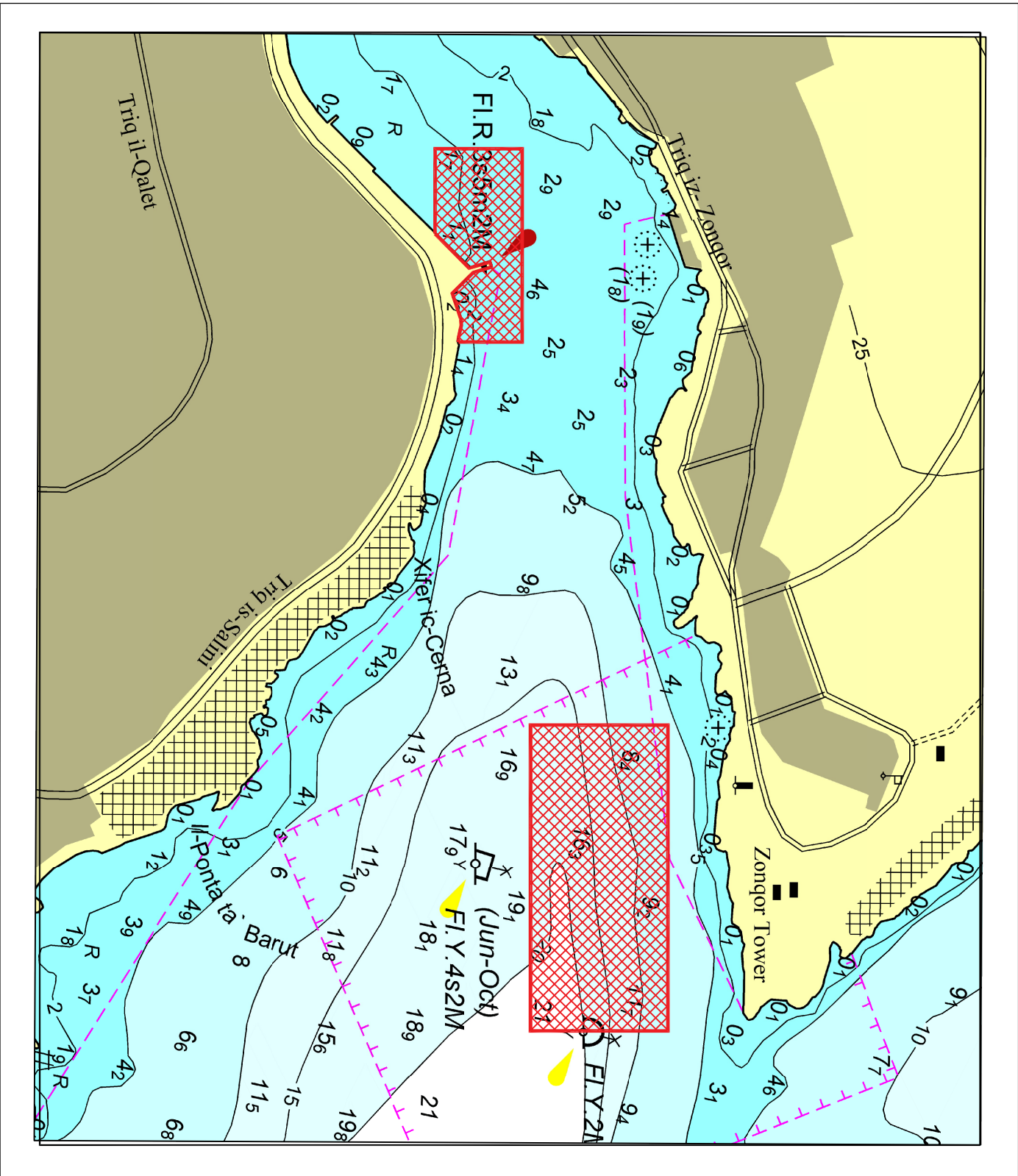
© Transport Malta all rights reserved

DISCLAIMER

Whilst the Ports and Yachting Directorate, Transport Malta has endeavoured to ensure that the material supplied is suitable for the purpose described, it accepts no liability (to the maximum extent permitted by law) for any damage or loss of any nature arising from its use.

The material supplied is used entirely at the Recipient's own risk.

Chart A



© Transport Malta all rights reserved

DISCLAIMER

Whilst the Ports and Yachting Directorate, Transport Malta has endeavoured to ensure that the material supplied is suitable for the purpose described, it accepts no liability (to the maximum extent permitted by law) for any damage or loss of any nature arising from its use.

The material supplied is used entirely at the Recipient's own risk.

Chart B