



PORTS AND YACHTING DIRECTORATE

## LOCAL NOTICE TO MARINERS No 106 of 2026

Our Ref: **TM/PYD/0001/26**

10 June 2026



**Transport Malta**

Malta Transport Centre,  
Triq Pantar, Hal Lija, LJA 2021  
Malta

Tel: (356) 2122 2203  
Fax: (356) 2125 0365  
Email: [info.tm@transport.gov.mt](mailto:info.tm@transport.gov.mt)

[www.transport.gov.mt](http://www.transport.gov.mt)

### **Diving operations at Marsamxett Harbour (Tigne` Point)**

The Ports and Yachting Directorate, Transport Malta, notifies mariners and owners of vessels that diving operations (water-pipeline repairs) will take place at Marsamxett Harbour, near Tigne` Point.

The diving operation is scheduled to be held on any day between Wednesday 17<sup>th</sup> June 2026 and Friday 26<sup>th</sup> June 2026.

During the diving operation, the diving team will be assisted by several vessels, which will be displaying the International Code of Signals flag "A".

A safety distance of 100m radius, from the support vessel, is required.

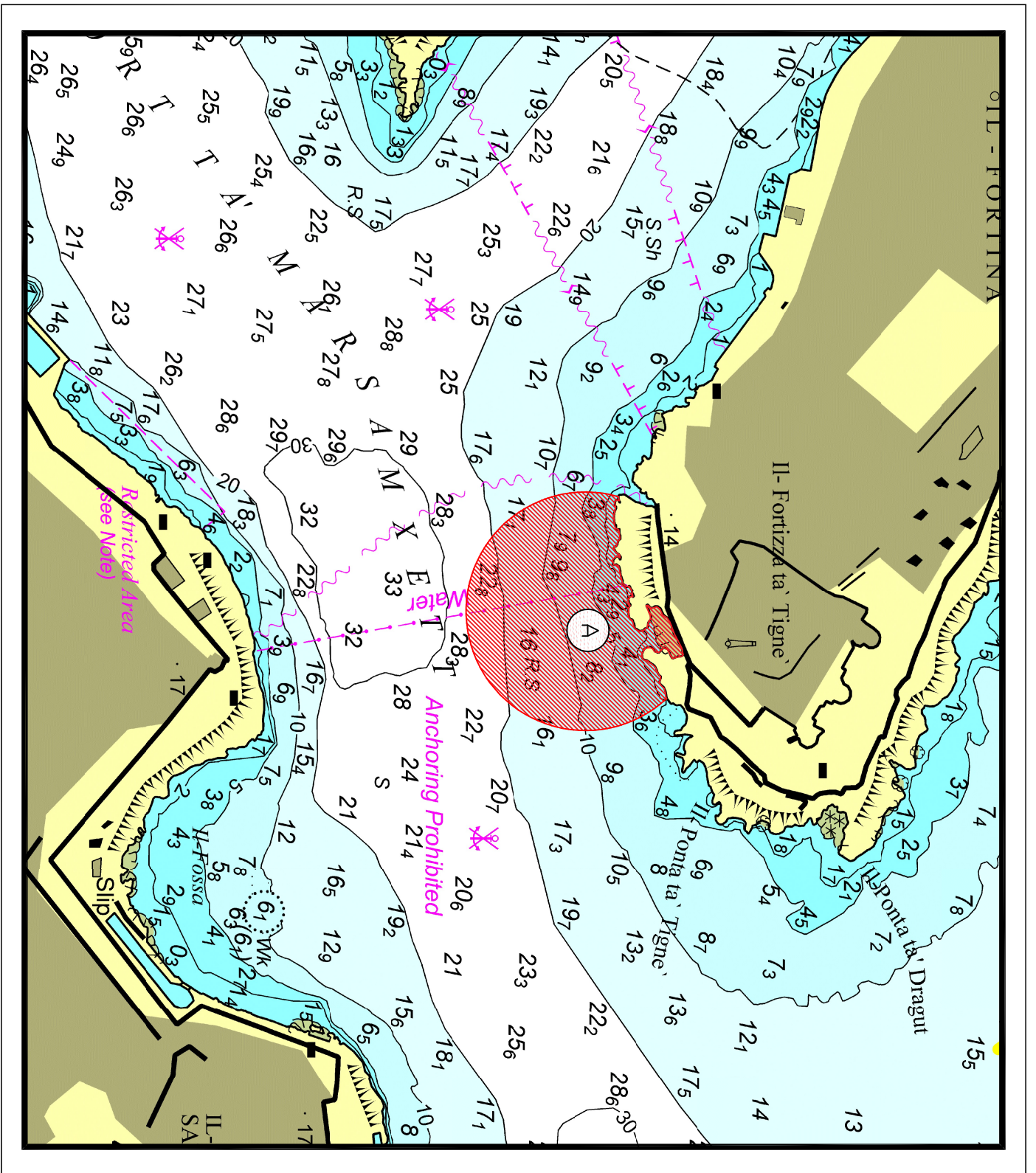
The diving operation will be carried out in the approximate position:

	Latitude (N)	Longitude (E)
A	35° 54'.307	014° 30'.770

Masters and operators of vessels are advised to keep a sharp lookout, navigate with caution, and at slow speed (no wake) when navigating close to the above indicated area.

All vessels are to comply with any instructions given on VHF Channel 12 and/or 16 by Valletta VTS.

Chart affected: **BA 177, 2537, 2538**



© British Crown Copyright 1970, 1983, 1986, 1988, 1999, 2000  
 All rights reserved.

The UK Hydrographic Office makes the accompanying data  
 Available to Malta Maritime Authority (Transport Malta)  
 Under the terms and conditions of agreement HO 1427/020930/01.

**DISCLAIMER**

Whilst the UK Hydrographic Office has endeavoured to ensure  
 That the material supplied is suitable for the purpose described,  
 It accepts no liability (to the maximum extent permitted by law)  
 For any damage or loss of any nature arising from its use.  
 The material supplied is used entirely at the Recipient's own risk.