



PORTS AND YACHTING DIRECTORATE

## LOCAL NOTICE TO MARINERS N° 103 of 2026

Our Ref: **TM/PYD/63/95**

04 June 2026



**Transport Malta**

Malta Transport Centre,  
Triq Pantar, Hal Lija, LJA 2021  
Malta

Tel: (356) 2122 2203  
Fax: (356) 2125 0365  
Email: [info.tm@transport.gov.mt](mailto:info.tm@transport.gov.mt)

[www.transport.gov.mt](http://www.transport.gov.mt)

### Benthic survey within il- Bajja ta' Wied I-Għajn

The Ports and Yachting Directorate, Transport Malta, notifies mariners and owners of vessels that a benthic survey will be held within il-Bajja ta' Wied I- Għajn.

The survey will be held from Monday 8<sup>th</sup> June 2026 to Thursday 25<sup>th</sup> June 2026, within the area formed by joining the points A, B, C, D, E, F, and the immediate coastline, as shown on the attached chart.

Position	Latitude (N)	Longitude (E)
A	35° 51'.828	014° 34'.004
B	35° 51'.874	014° 33'.957
C	35° 51'.911	014° 33'.943
D	35° 51'.982	014° 34'.065
E	35° 51'.940	014° 34'.145
F	35° 51'.894	014° 34'.170

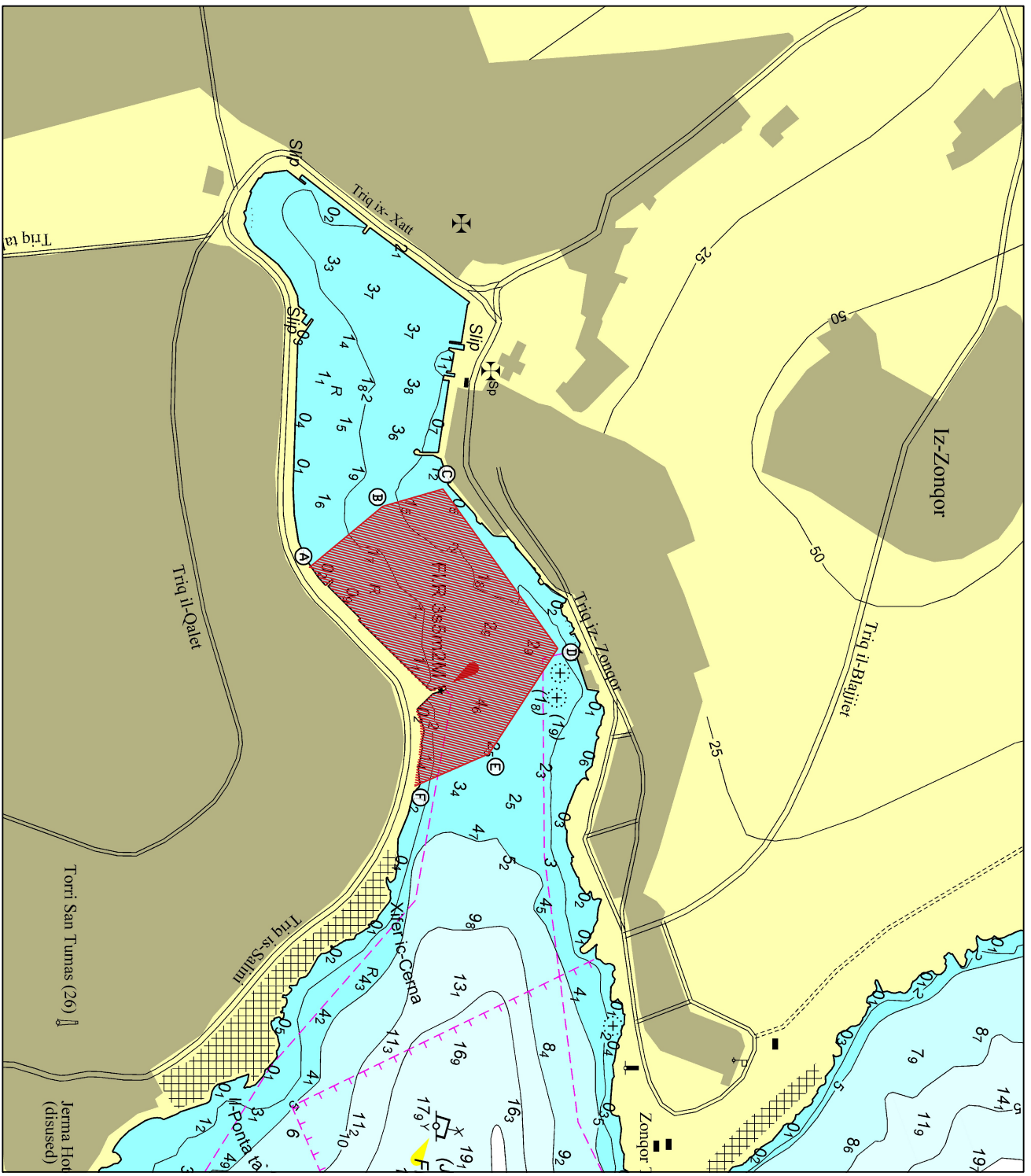
The benthic survey will be carried out by scuba divers and will be accompanied by a support vessel, which will be displaying the International Code of Signals flag "A".

A safety zone of 20m around the survey area is to be kept during the survey.

Masters and operators of vessels are advised to keep a sharp lookout, proceed with caution and at slow speed when navigating in the vicinity of the above-mentioned area.

They are to comply with instructions given on VHF Channel 12 and/or 16 by Valletta VTS.

Chart affected: **BA 36**



© Transport Malta all rights reserved

**DISCLAIMER**

Whilst the Ports and Yachting Directorate, Transport Malta has endeavoured to ensure that the material supplied is suitable for the purpose described, it accepts no liability (to the maximum extent permitted by law) for any damage or loss of any nature arising from its use.  
The material supplied is used entirely at the Recipient's own risk.