



PORTS AND YACHTING DIRECTORATE

LOCAL NOTICE TO MARINERS N° 101 of 2025

Our Ref: **TM/PYD/26/96/1**

30 June 2025



Transport Malta

Malta Transport Centre,
Triq Pantar, Hal Lija, LJA 2021
Malta

Tel: (356) 2122 2203
Fax: (356) 2125 0365
Email: info.tm@transport.gov.mt

www.transport.gov.mt

Fireworks Display - Our Lady of Mount Carmel - Gzira feast - 2025

The Ports and Yachting Directorate, Transport Malta, notifies Mariners that firework displays will be let off from the foreshore in Sliema Creek, centred in points A and B, as shown on the attached chart:

Position	Latitude (N)	Longitude (E)
A	35° 54'.316	014° 30'.257
B	35° 54'.266	014° 29'.860

The aerial fireworks display will take place from Manoel Island, as shown on the attached chart, on the following dates and times:

From point A

on Saturday 12th July 2025 from 0900 hours till 0920 hours,
from 1200 hours till 1220 hours,
from 1800 hours till 1900 hours and
from 2130 hours till midnight.

on Sunday 13th July 2025 from 0900 hours till 0920 hours,
from midday till 1220 hours and
from 1915 hours till 2230 hours.

Small fireworks will also be let off from point B (near the bridge), as shown on the attached chart, on the following date and time:



From point B (near the bridge)

on Monday 7 th July 2025	from 1900 hours to 1930 hours,
on Friday 11 th July 2025	from 2200 hours to 2300 hours.

There will also be a ground firework display from point B (near the bridge) on Saturday 12th July 2025 from 2330 hours to 0100 hours on Sunday 13th July 2025.

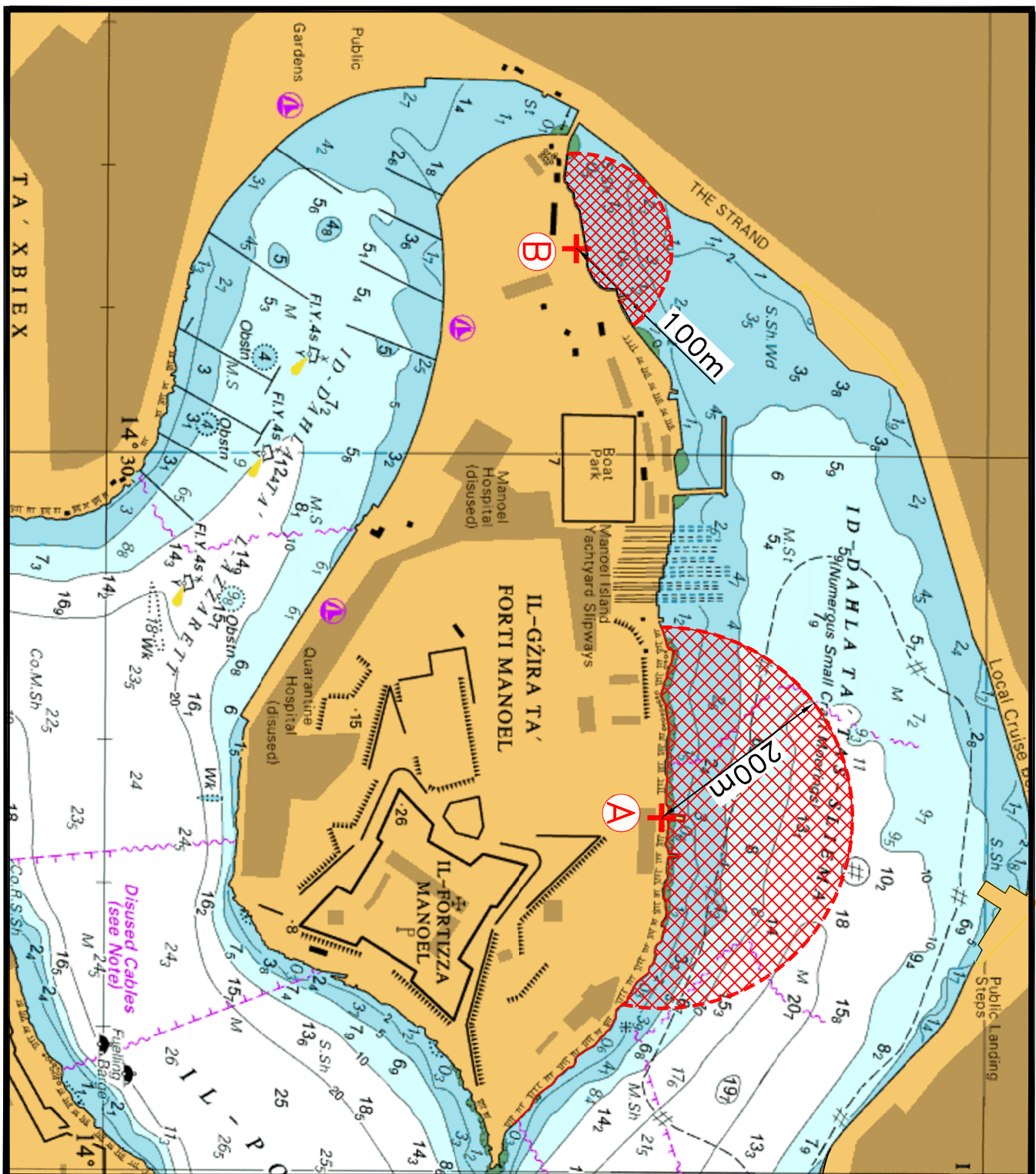
In view of the above, mariners are informed that navigation within 200 meters from the above-mentioned point A in Sliema Creek will be prohibited during the time of the fireworks displays from point A.

All craft moored within 200m from points A and 100m from point B (as shown on the attached chart) are to be removed on the above-mentioned dates and times of the fireworks displays.

Transport Malta will accept no liability whatsoever for any damage caused by the firework displays to any vessel and her ancillary equipment, whether such vessel and her ancillary equipment are left within the indicated area, or outside such area.

All mariners are to comply with any instructions given on VHF Channel 12 and/or 16, by Valletta VTS and by any enforcement officers on site.

Chart Affected: BA 177



© British Crown Copyright 1970, 1983, 1986, 1988, 1999, 2000
All rights reserved.

The UK Hydrographic Office makes the accompanying data
Available to Malta Maritime Authority (Transport Malta)
Under the terms and conditions of agreement HO 1427/020930/01.

DISCLAIMER

Whilst the UK Hydrographic Office has endeavoured to ensure
That the material supplied is suitable for the purpose described,
it accepts no liability (to the maximum extent permitted by law)
For any damage or loss of any nature arising from its use.
The material supplied is used entirely at the Recipient's own risk.