



PORTS AND YACHTING DIRECTORATE

## LOCAL NOTICE TO MARINERS N° 099 of 2026

Our Ref: **TM/PYD/105/94/Vol II**

3 May 2026



**Transport Malta**

Malta Transport Centre  
Marsa, MRS 1917  
Malta

Tel: (356) 2122 2203  
Fax: (356) 2125 0365  
Email: [info.tm@transport.gov.mt](mailto:info.tm@transport.gov.mt)

[www.transport.gov.mt](http://www.transport.gov.mt)

### Special Mark Buoys Alerting Mariners of Speed Restriction Areas around Malta

The Ports and Yachting Directorate, Transport Malta notifies mariners that in addition to the permanent speed limit buoys, special marker buoys will be placed around the Maltese Islands to alert mariners of speed restriction areas (10 Knots and 5 Knots) around Malta. The placement of the buoys is seasonal, from June to October but may still be in place after this date.

Special Mark Buoys 1.5 metres in diameter, fitted with a light flashing yellow 1 every 4 seconds “*Fl.Y.4s (Jun-Oct)*” and a 2 nautical miles range, shall be placed in the following positions:

	Bays	Speed	Latitude	Longitude
A1	Marsalforn	10 Knots	36° 04'.564	014° 15'.843
A2	Comino	10 Knots	36° 01'.303	014° 20'.379
A3	Qawra	10 Knots	35° 57'.732	014° 25'.817
A4	Dragonara Point	10 Knots	35° 55'.729	014° 29'.748
A5	Dragut Point	10 Knots	35° 54'.500	014° 31'.007

Further to the above yellow cylindrical buoys which are 0.9 metres in diameter, flashing yellow 1 every 4 seconds “*Fl.Y.4s (Jun-Oct)*” and having a 2 nautical miles range, will be placed in the following positions:



Transport Malta

Bays		Speed	Latitude	Longitude
B1	Ramla I-Hamra	10 Knots	36° 03'.827	014° 17'.018
B3	San Niklaw	10 Knots	36° 01'.264	014° 19'.804
B6	Santa Marija	10 Knots	36° 01'.216	014° 20'.108
B14	Cirkewwa	10 Knots	35° 59'.059	014° 19'.789
B15	Armier	10 Knots	35° 59'.527	014° 21'.460
B16	Little Armier	10 Knots	35° 59'.627	014° 21'.602
B17	Mellieha	Safe Speed	35° 59'.001	014° 22'.529
B19	Mellieha	Safe Speed	35° 58'.693	014° 22'.657
B21	Mellieha	Safe Speed	35° 58'.514	014° 22'.660
B23	Mellieha	Safe Speed	35° 58'.287	014° 22'.160
B24	Mellieha	Safe Speed	35° 58'.394	014° 22'.711
B26	Il-Gzejjer South	10 Knots	35° 57'.942	014° 24'.601
B28	Ras il-Ghallis	10 Knots	35° 57'.400	014° 25'.968
B29	San Giljan	10 Knots	35° 55'.221	014° 29'.857
B30	Marsascala	10 Knots	35° 51'.907	014° 34'.432
B31	San Tumas	10 Knots	35° 51'.320	014° 34'.331
B32	Xorb I-Ghagin	10 Knots	35° 50'.298	014° 34'.030
B33	St. Peter's Pool	10 Knots	35° 49'.903	014° 33'.897
B34	Dellimara	10 Knots	35° 49'.388	014° 33'.857
B35	Il-Gnejna	10 Knots	35° 55'.473	014° 20'.354
B36	Ghajn Tuffieha	10 Knots	35° 55'.800	014° 20'.495
B37	Il-Mixquqa	10 Knots	35° 55'.965	014° 20'.464

The following buoys placed at Mgarr ix-Xini – Gozo, Blue Lagoon – Comino, Mellieha – off the beach, Il-Gzejjer North and Xemxija inner, delineate a 5 Knots maximum speed limit.

B2	Mgarr ix-Xini	5 Knots	36° 00'.906	014° 16'.445
B4	San Niklaw Bay (Fairway 1)	5 Knots	36° 01'.167	014° 19'.770
B5	San Niklaw Bay (Fairway 9D)	5 Knots	36° 01'.039	014° 19'.773
B7	Santa Marija Bay (Fairway 1)	5 Knots	36° 01'.031	014° 20'.210
B8	Santa Marija Bay (Fairway 2)	5 Knots	36° 01'.111	014° 20'.210
B9	Blue Lagoon Outer	5 Knots	36° 01'.004	014° 19'.226
B10	Blue Lagoon (Fairway 5)	5 Knots	36° 00'.965	014° 19'.332
B11	Blue Lagoon (Fairway 3)	5 Knots	36° 00'.952	014° 19'.310
B12	Blue Lagoon (Fairway 2)	5 Knots	36° 00'.913	014° 19'.346
B13	Blue Lagoon (Fairway 1)	5 Knots	36° 00'.852	014° 19'.401
B18	Mellieha	5 Knots	35° 58'.538	014° 21'.551
B20	Mellieha	5 Knots	35° 58'.309	014° 21'.622
B22	Mellieha	5 Knots	35° 58'.152	014° 21'.461
B25	Il-Gzejjer North	5 Knots	35° 58'.076	014° 23'.974
B27	Xemxija	5 Knots	35° 57'.027	014° 23'.508



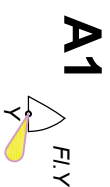
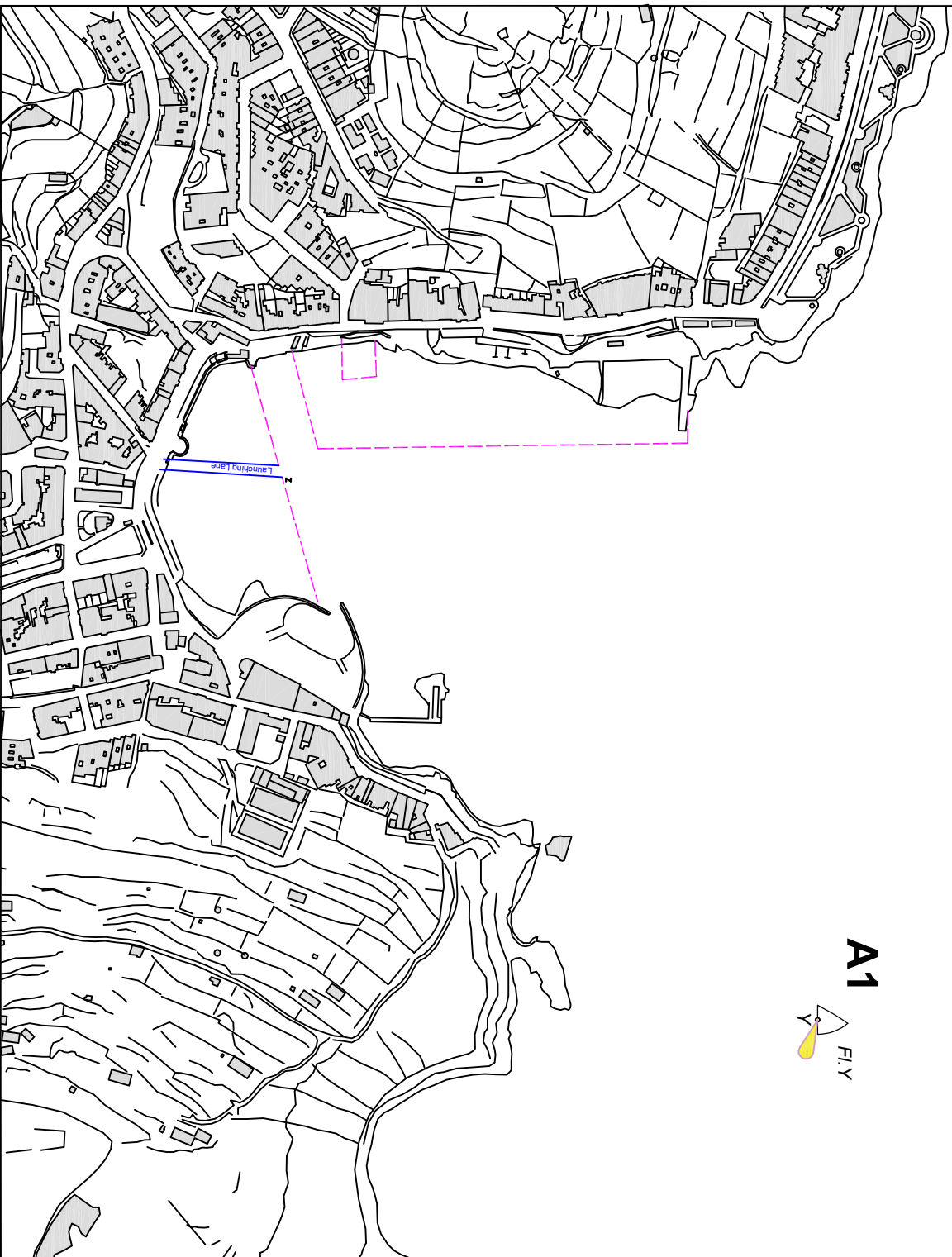
Transport Malta

Buoys indicate to the mariners that they are approaching areas where speed restrictions apply, and in any case, mariners are always reminded to proceed at a safe speed subject to the prevailing circumstances and conditions.

Mariners are further reminded that it is prohibited to moor any vessel to any of the above buoys and any other buoy owned by the Transport Malta and that the speed restriction is in place all year round even without the buoys in place. The buoys may be deployed prior to Monday 1<sup>st</sup> June 2026 and the removal of the buoys may be delayed to after Saturday 31<sup>st</sup> October 2026.

Charts affected: **BA 36, 177, 211A, 211B, 2537, 2538**

A1 - Marsalforn - 36° 04' 564 014° 15' 843 - Depth 7.7m



© Transport Malta all rights reserved

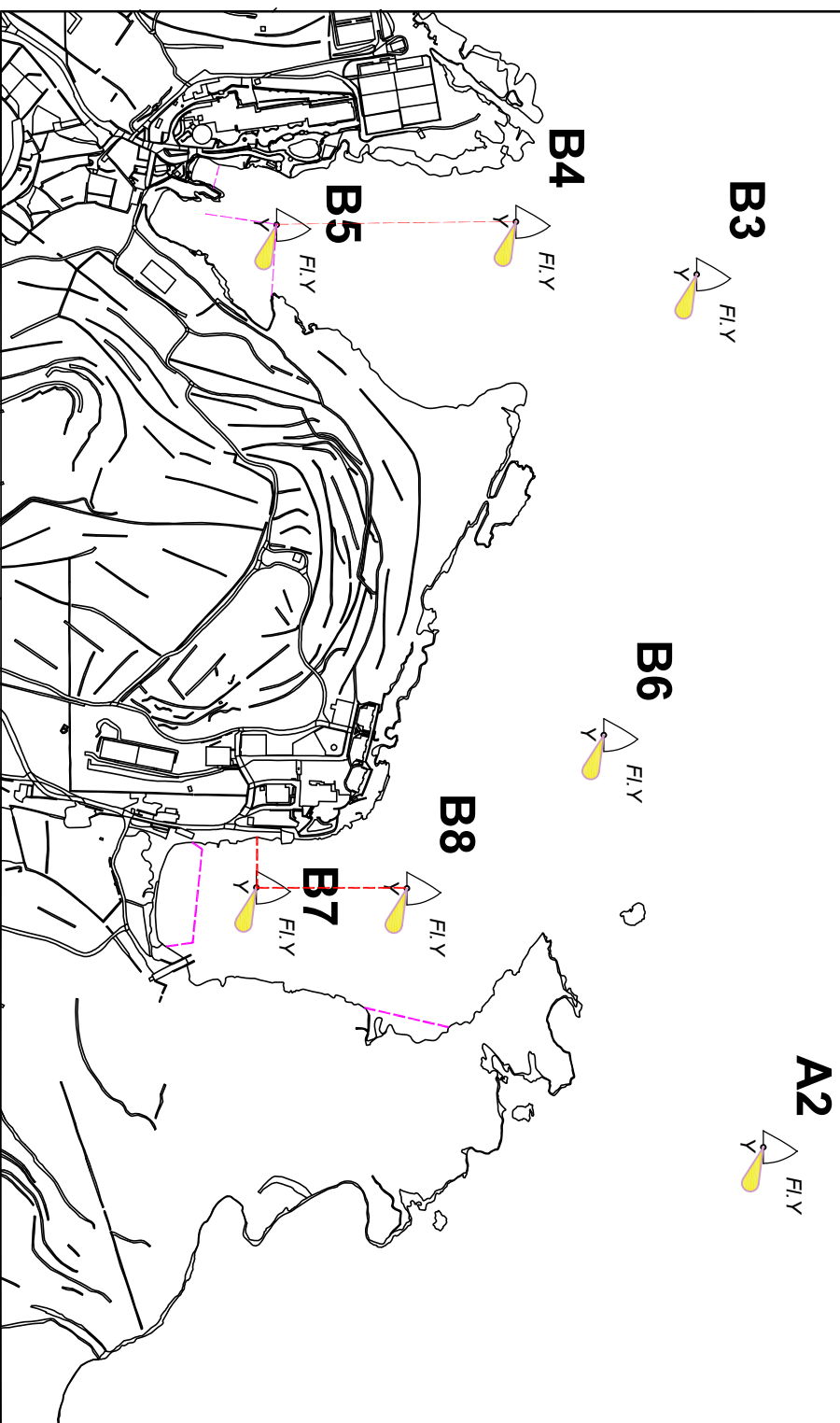
DISCLAIMER

Whilst the Ports and Yachting Directorate, Transport Malta has endeavoured to ensure that the material supplied is suitable for the purpose described, it accepts no liability (to the maximum extent permitted by law) for any damage or loss of any nature arising from its use.

The material supplied is used entirely at the Recipient's own risk.

**Buoys B4, B5, B7 and B8 are 5 Knots Buoys**

<b>A2</b> - Comino	- 36° 01'.303	014° 20'.379	- Depth 23.0m
<b>B3</b> - San Niklaw	- 36° 01'.264	014° 19'.804	- Depth 18.3m
<b>B4</b> - San Niklaw	- 36° 01'.167	014° 19'.770	- Fairway
<b>B5</b> - San Niklaw	- 36° 01'.039	014° 19'.773	- Fairway
<b>B6</b> - Santa Maria	- 36° 01'.216	014° 20'.108	- Depth 13.0m
<b>B7</b> - Santa Maria	- 36° 01'.031	014° 20'.210	- Fairway
<b>B8</b> - Santa Maria	- 36° 01'.111	014° 20'.210	- Fairway



© Transport Malta all rights reserved

**DISCLAIMER**

Whilst the Ports and Yachting Directorate, Transport Malta has endeavoured to ensure that the material supplied is suitable for the purpose described, it accepts no liability (to the maximum extent permitted by law) for any damage or loss of any nature arising from its use.

The material supplied is used entirely at the Recipient's own risk.

**Buoys B25 and B27 are 5 Knots Buoys**

<b>A3</b> - Qawra	- 35° 57'.732	014° 25'.817	- Depth 17.9m
<b>B25</b> - Il-Gzejjer North	- 35° 58'.076	014° 23'.974	- Depth 8.5m
<b>B26</b> - Il-Gzejjer South	- 35° 57'.942	014° 24'.601	- Depth 20.0m
<b>B27</b> - Xemxija	- 35° 57'.027	014° 23'.508	- Depth 10.3m
<b>B28</b> - Ras Il-Ghallis	- 35° 57'.400	014° 25'.968	- Depth 18.0m



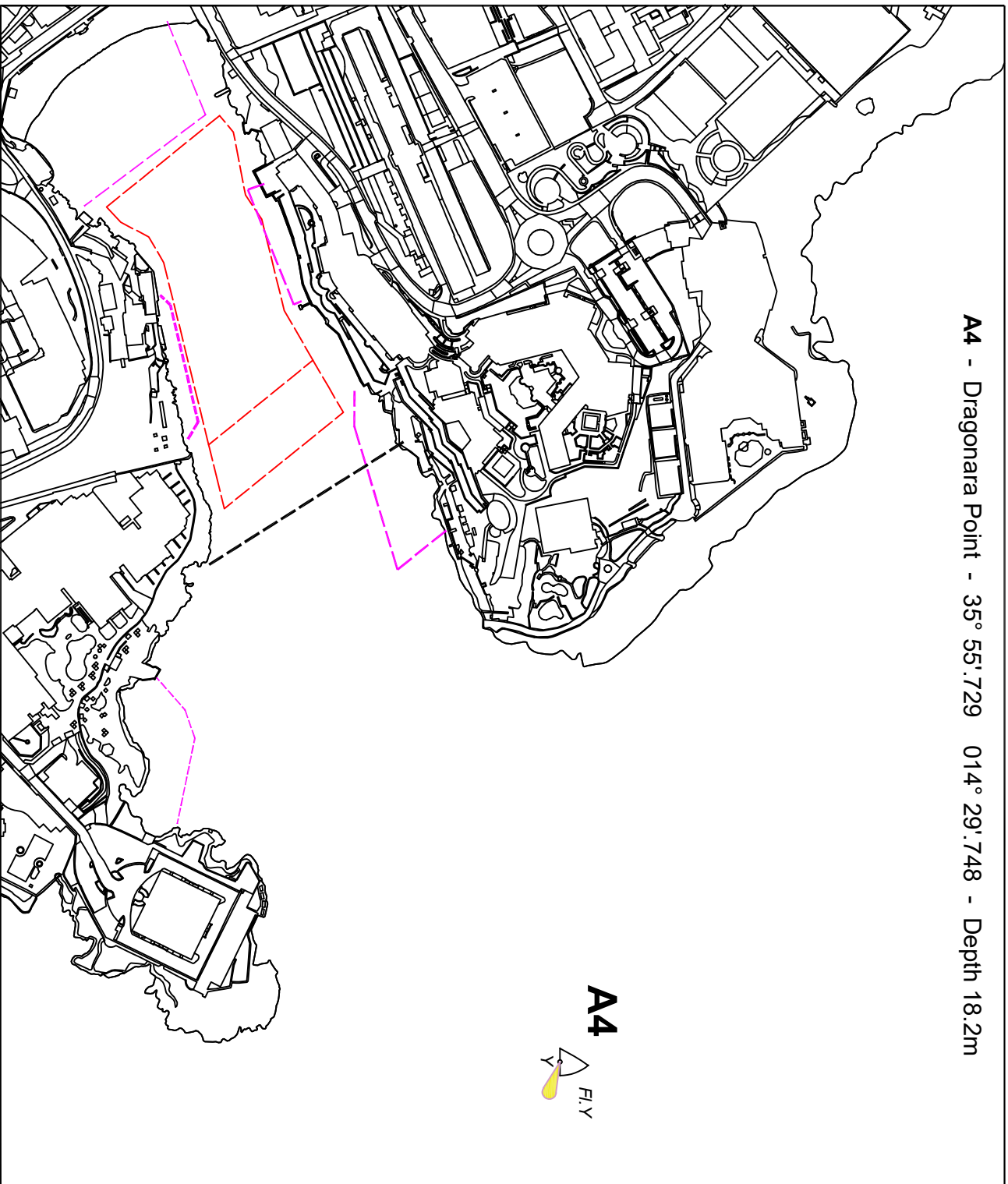
© Transport Malta all rights reserved

**DISCLAIMER**

Whilst the Ports and Yachting Directorate, Transport Malta has endeavoured to ensure that the material supplied is suitable for the purpose described, it accepts no liability (to the maximum extent permitted by law) for any damage or loss of any nature arising from its use.

The material supplied is used entirely at the Recipient's own risk.

**A4 - Dragonara Point - 35° 55'.729 014° 29'.748 - Depth 18.2m**



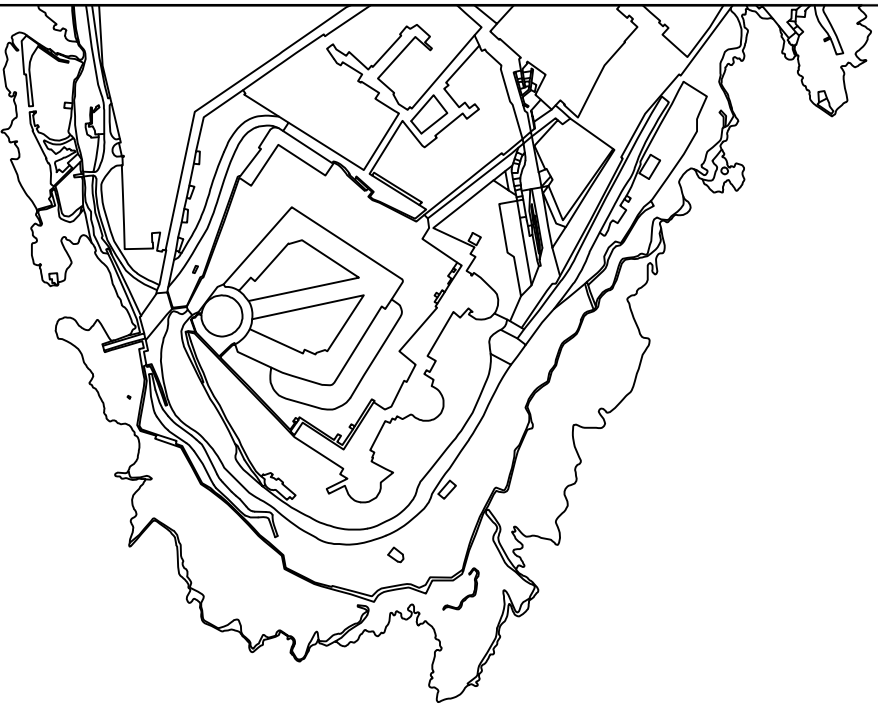
© Transport Malta all rights reserved

**DISCLAIMER**

Whilst the Ports and Yachting Directorate, Transport Malta has endeavoured to ensure that the material supplied is suitable for the purpose described, it accepts no liability (to the maximum extent permitted by law) for any damage or loss of any nature arising from its use.

The material supplied is used entirely at the Recipient's own risk.

**A5 - Marsalforn - 35° 54'.500 014° 31'.007 - Depth 16.0m**



© Transport Malta all rights reserved

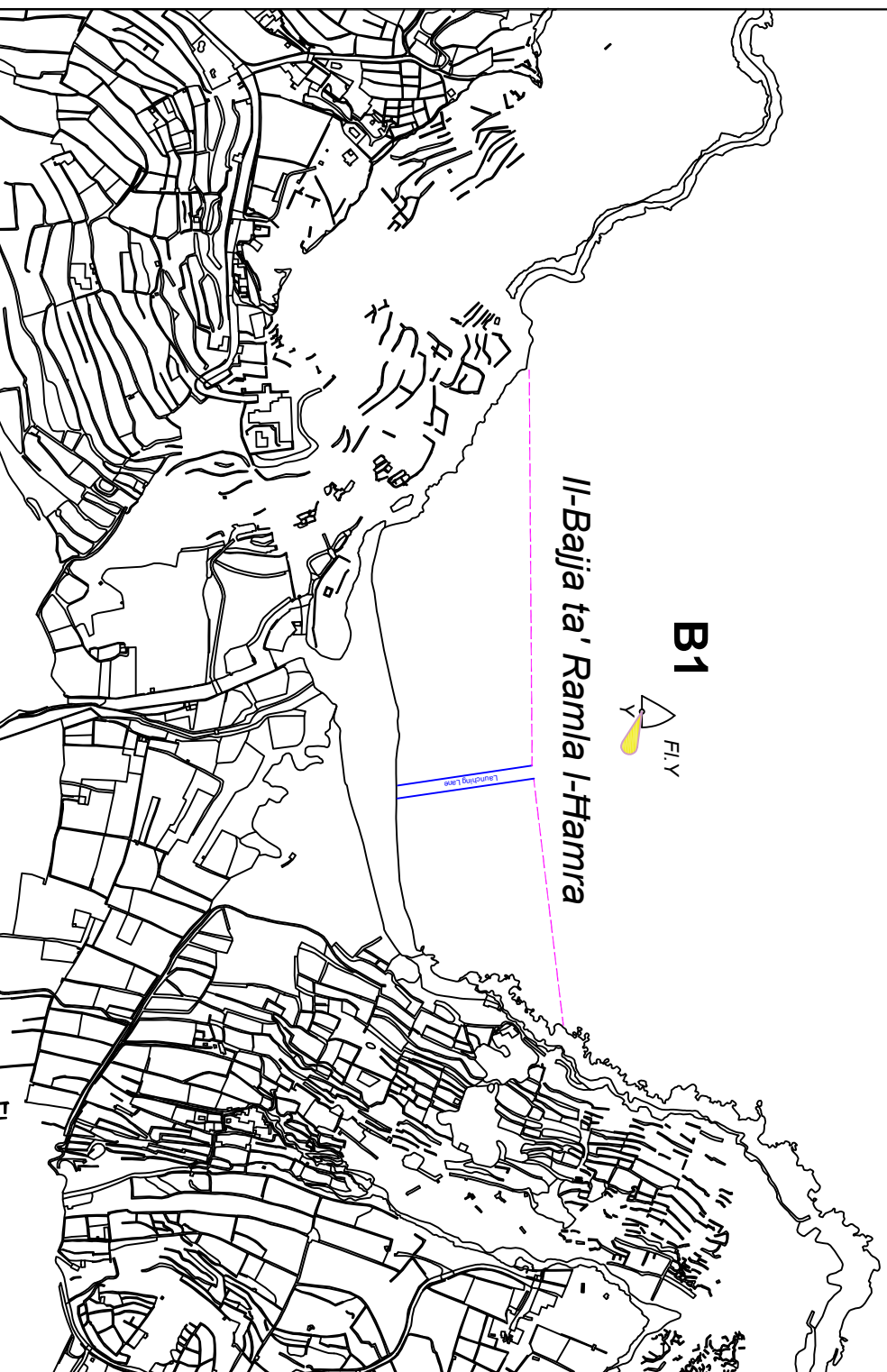
**DISCLAIMER**

Whilst the Ports and Yachting Directorate, Transport Malta has endeavoured to ensure that the material supplied is suitable for the purpose described, it accepts no liability (to the maximum extent permitted by law) for any damage or loss of any nature arising from its use.

The material supplied is used entirely at the Recipient's own risk.

**Chart E**

**B1** - Ramla l-Hamra - 36° 03'.827 014° 17'.018 - Depth 6.0m



© Transport Malta all rights reserved

DISCLAIMER

Whilst the Ports and Yachting Directorate, Transport Malta has endeavoured to ensure that the material supplied is suitable for the purpose described, it accepts no liability (to the maximum extent permitted by law) for any damage or loss of any nature arising from its use.

The material supplied is used entirely at the Recipient's own risk.

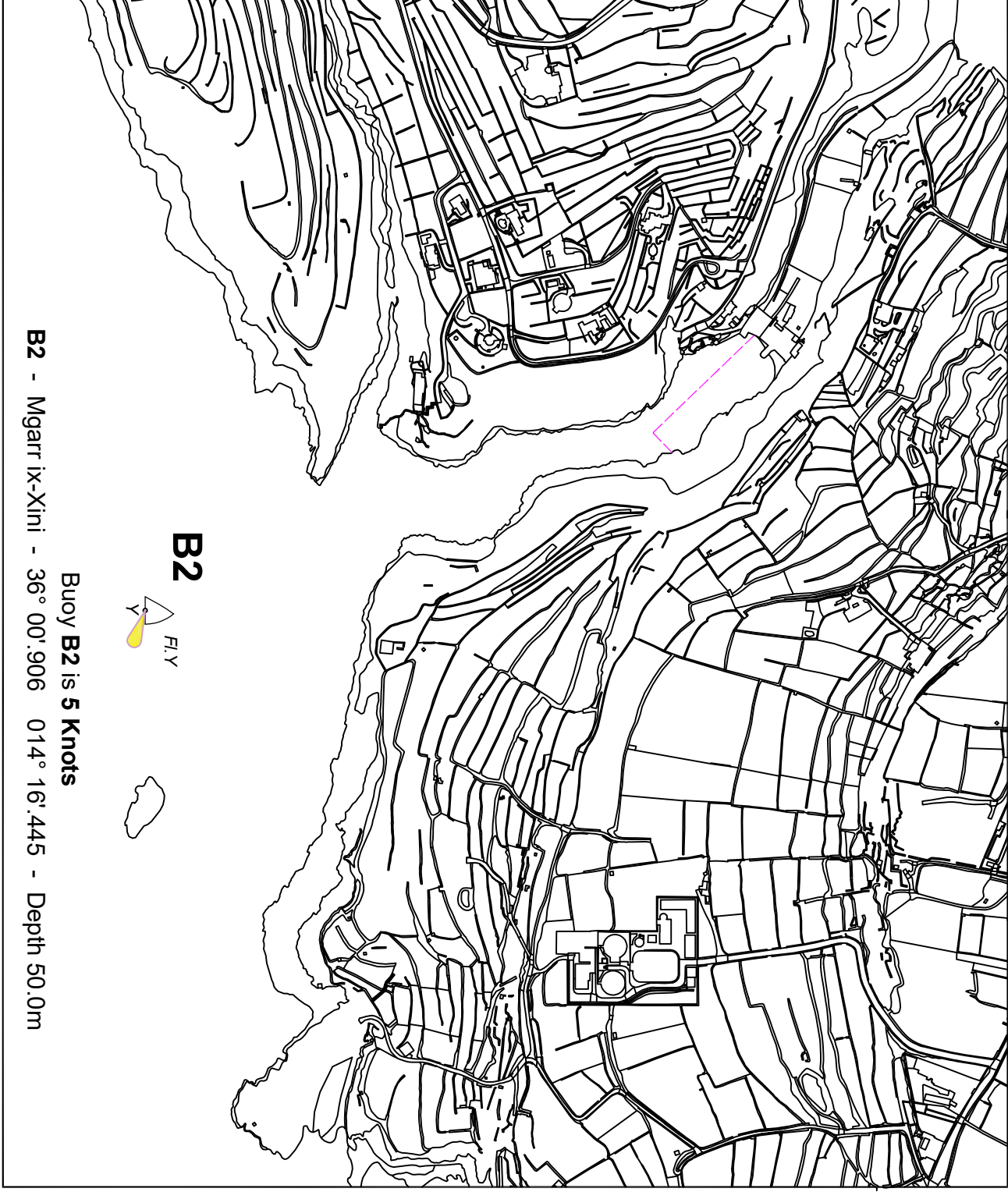
Chart F

© Transport Malta all rights reserved

**DISCLAIMER**

Whilst the Ports and Yachting Directorate, Transport Malta has endeavoured to ensure that the material supplied is suitable for the purpose described, it accepts no liability (to the maximum extent permitted by law) for any damage or loss of any nature arising from its use.

The material supplied is used entirely at the Recipient's own risk.



**B2**



**Buoy B2 is 5 Knots**

**B2 - Mgarr ix-Xini - 36° 00' 906 014° 16' 445 - Depth 50.0m**

© Transport Malta all rights reserved

**DISCLAIMER**

Whilst the Ports and Yachting Directorate, Transport Malta has endeavoured to ensure that the material supplied is suitable for the purpose described, it accepts no liability (to the maximum extent permitted by law) for any damage or loss of any nature arising from its use.

The material supplied is used entirely at the Recipient's own risk.

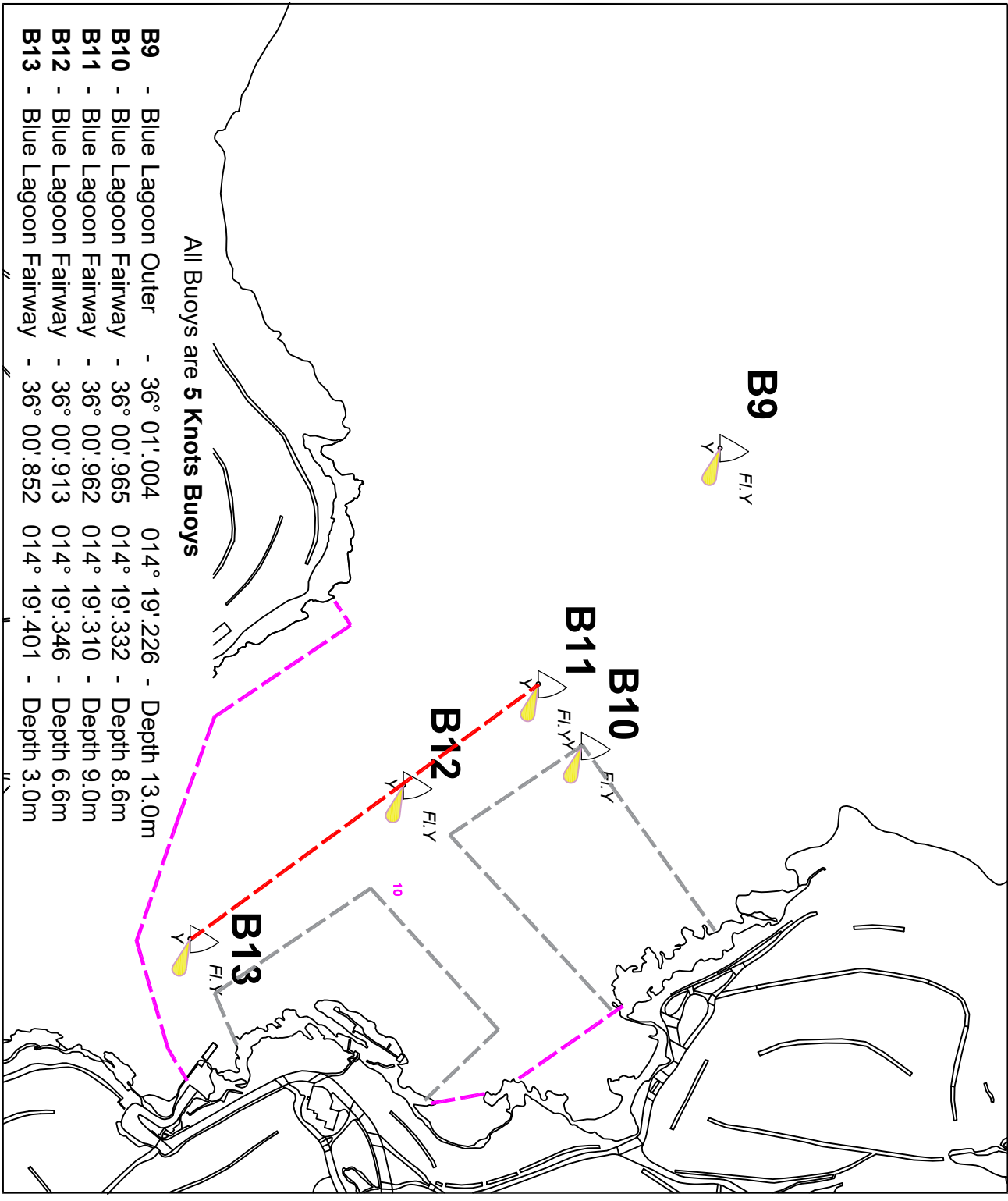


Chart H

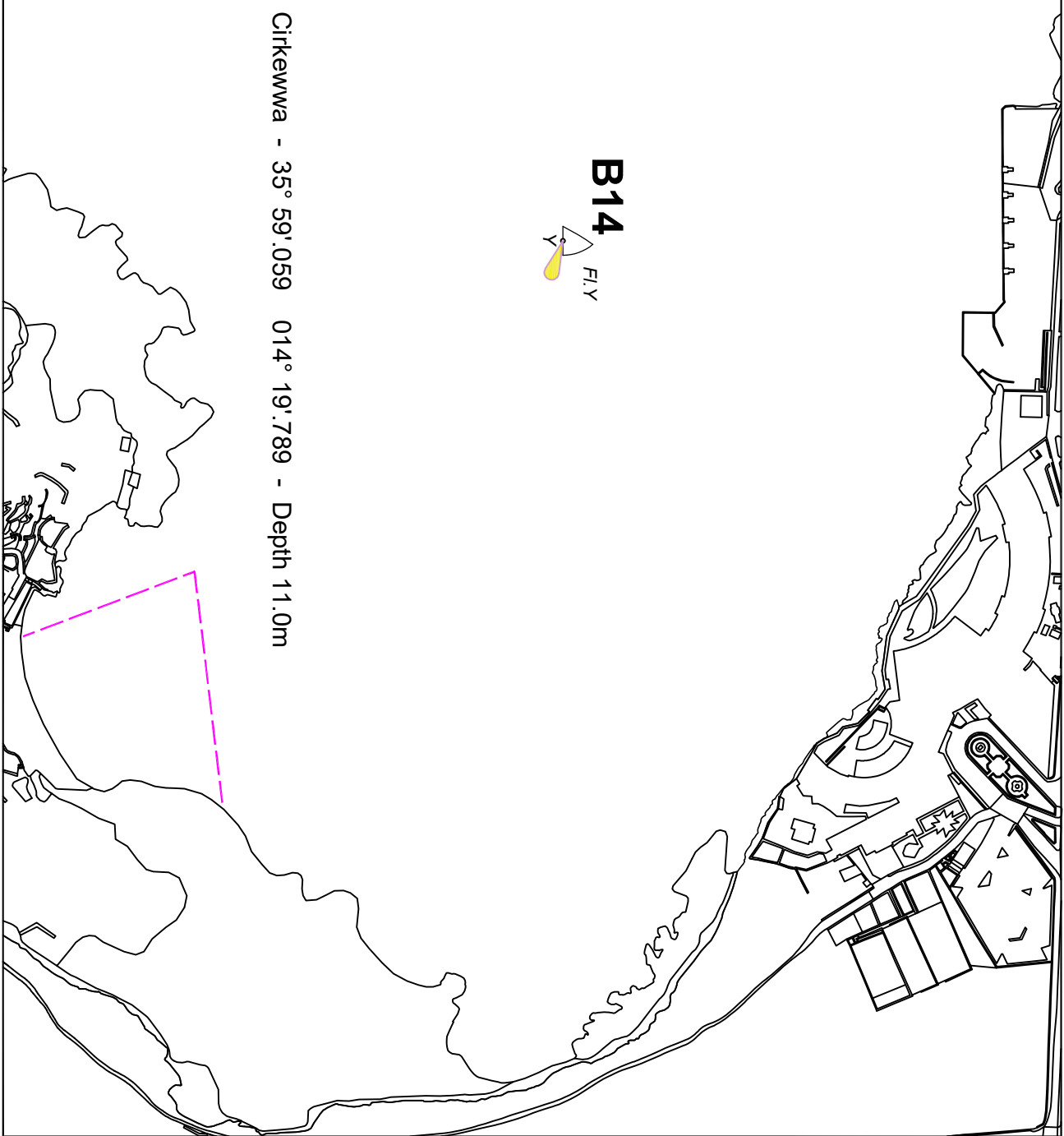
© Transport Malta all rights reserved

**DISCLAIMER**

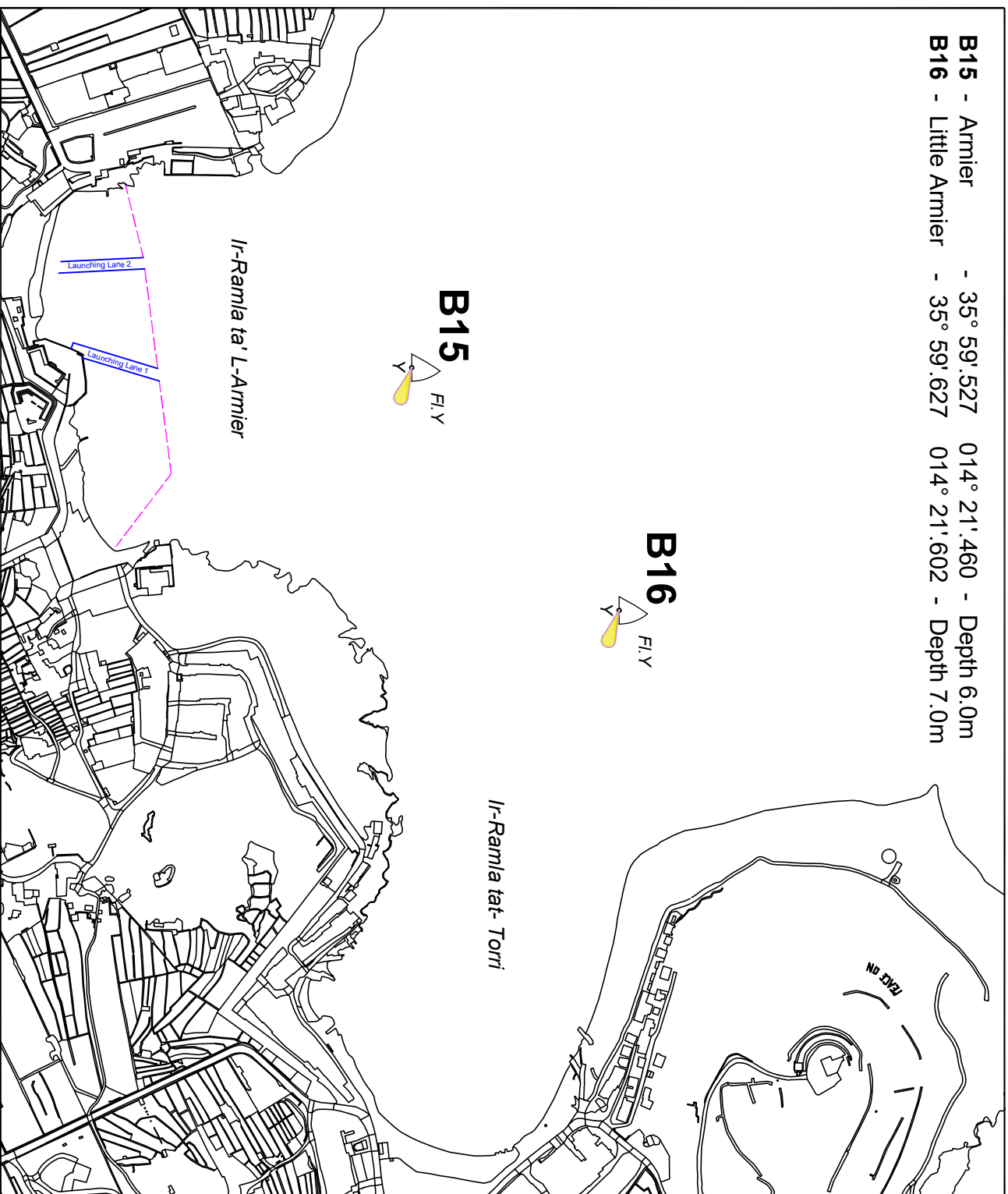
Whilst the Ports and Yachting Directorate, Transport Malta has endeavoured to ensure that the material supplied is suitable for the purpose described, it accepts no liability (to the maximum extent permitted by law) for any damage or loss of any nature arising from its use.  
The material supplied is used entirely at the Recipient's own risk.



**B14 - Cirkewwa - 35° 59'.059 014° 19'.789 - Depth 11.0m**



**B15** - Armier - 35° 59'.527 - 014° 21'.460 - Depth 6.0m  
**B16** - Little Armier - 35° 59'.627 - 014° 21'.602 - Depth 7.0m



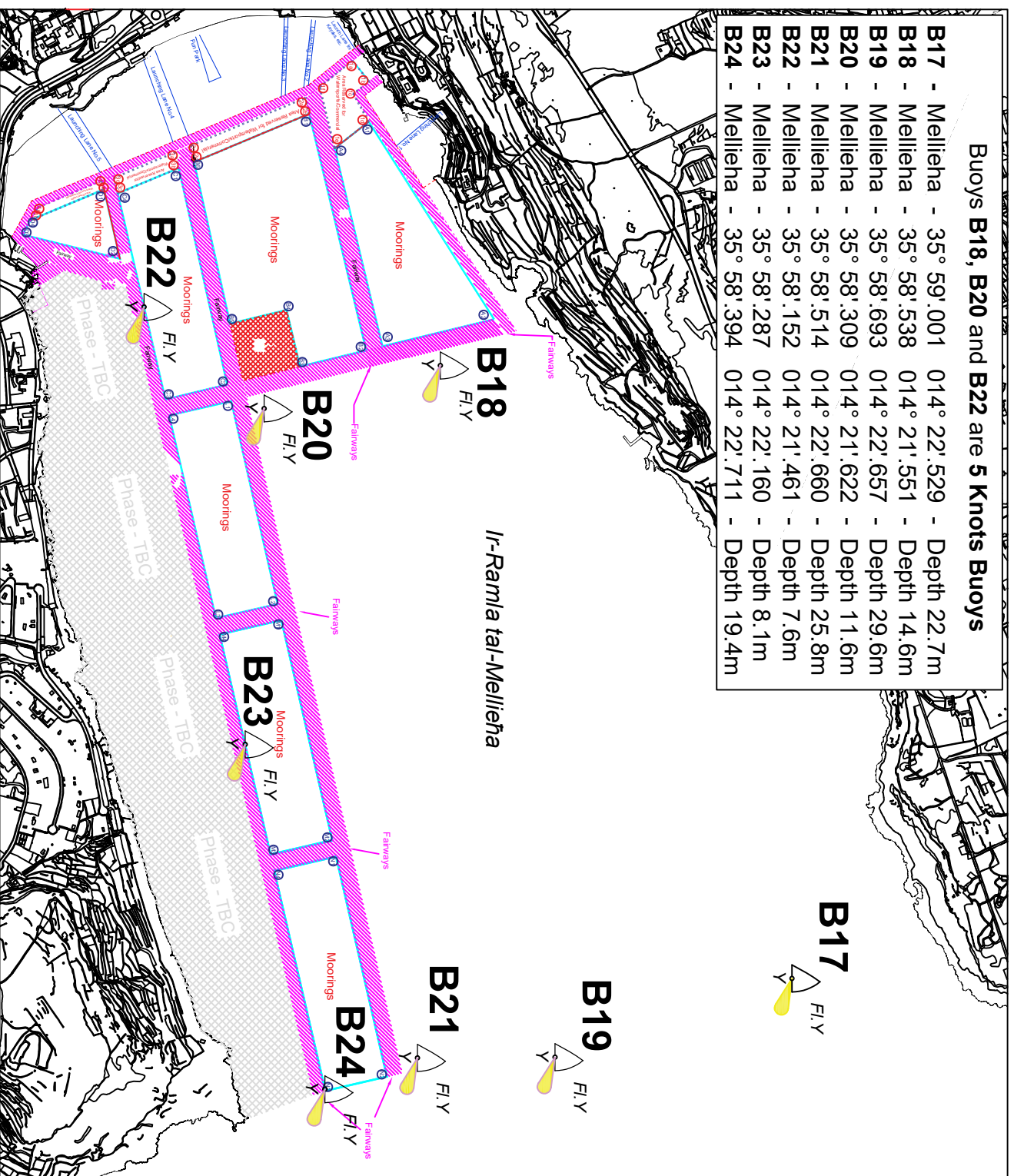
© Transport Malta all rights reserved

**DISCLAIMER**

Whilst the Ports and Yachting Directorate, Transport Malta has endeavoured to ensure that the material supplied is suitable for the purpose described, it accepts no liability (to the maximum extent permitted by law) for any damage or loss of any nature arising from its use.  
 The material supplied is used entirely at the Recipient's own risk.

**Buoys B18, B20 and B22 are 5 Knots Buoys**

<b>B17</b> - Mellieha	- 35° 59'.001	014° 22'.529	- Depth 22.7m
<b>B18</b> - Mellieha	- 35° 58'.538	014° 21'.551	- Depth 14.6m
<b>B19</b> - Mellieha	- 35° 58'.693	014° 22'.657	- Depth 29.6m
<b>B20</b> - Mellieha	- 35° 58'.309	014° 21'.622	- Depth 11.6m
<b>B21</b> - Mellieha	- 35° 58'.514	014° 22'.660	- Depth 25.8m
<b>B22</b> - Mellieha	- 35° 58'.152	014° 21'.461	- Depth 7.6m
<b>B23</b> - Mellieha	- 35° 58'.287	014° 22'.160	- Depth 8.1m
<b>B24</b> - Mellieha	- 35° 58'.394	014° 22'.711	- Depth 19.4m

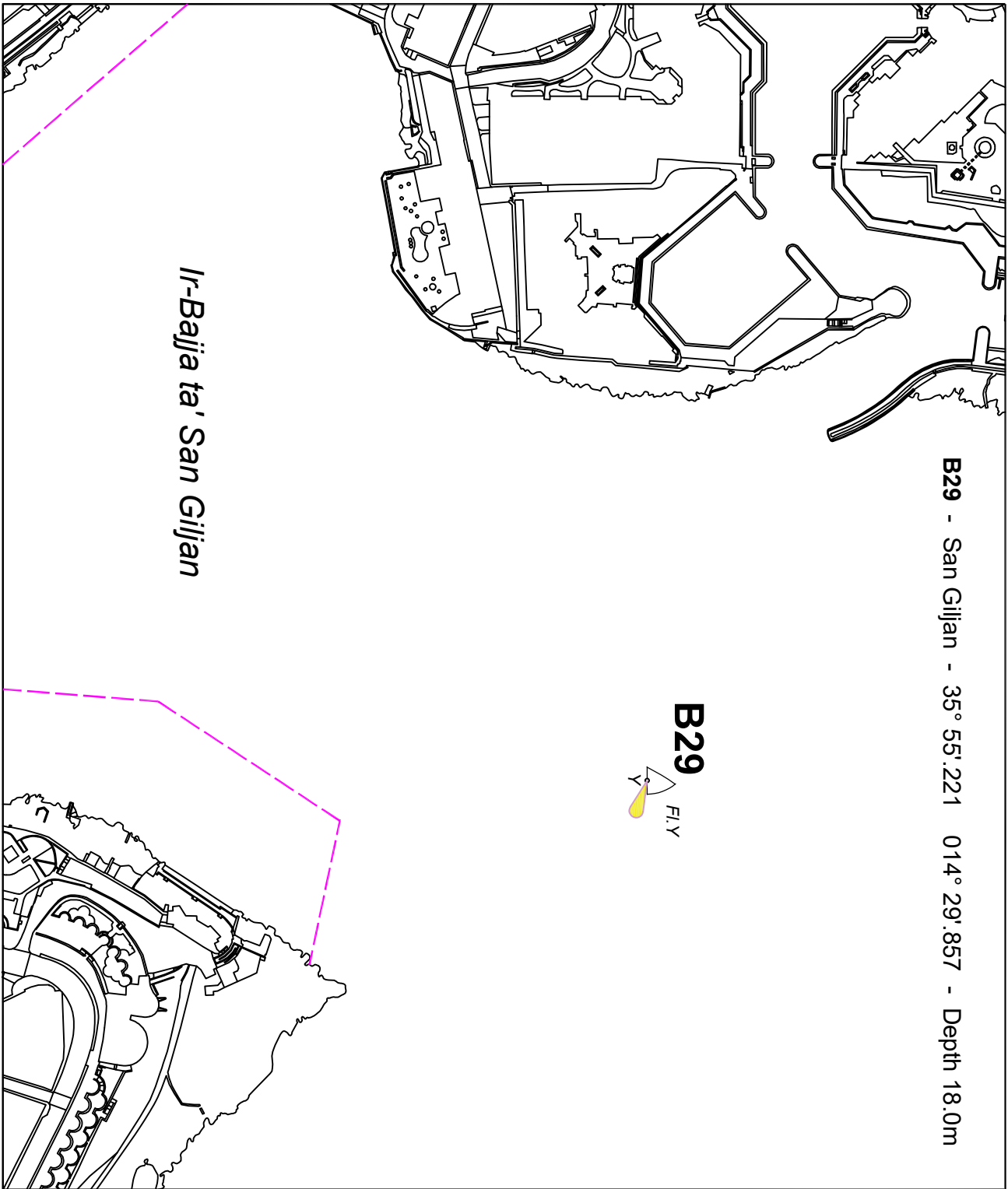


© Transport Malta all rights reserved

**DISCLAIMER**

Whilst the Ports and Yachting Directorate, Transport Malta has endeavoured to ensure that the material supplied is suitable for the purpose described, it accepts no liability (to the maximum extent permitted by law) for any damage or loss of any nature arising from its use.

The material supplied is used entirely at the Recipient's own risk.



**B29 - San Giljan - 35° 55' 221 014° 29' 857 - Depth 18.0m**

**B29**  
FLY

*Ir-Bajja ta' San Giljan*

© Transport Malta all rights reserved

**DISCLAIMER**

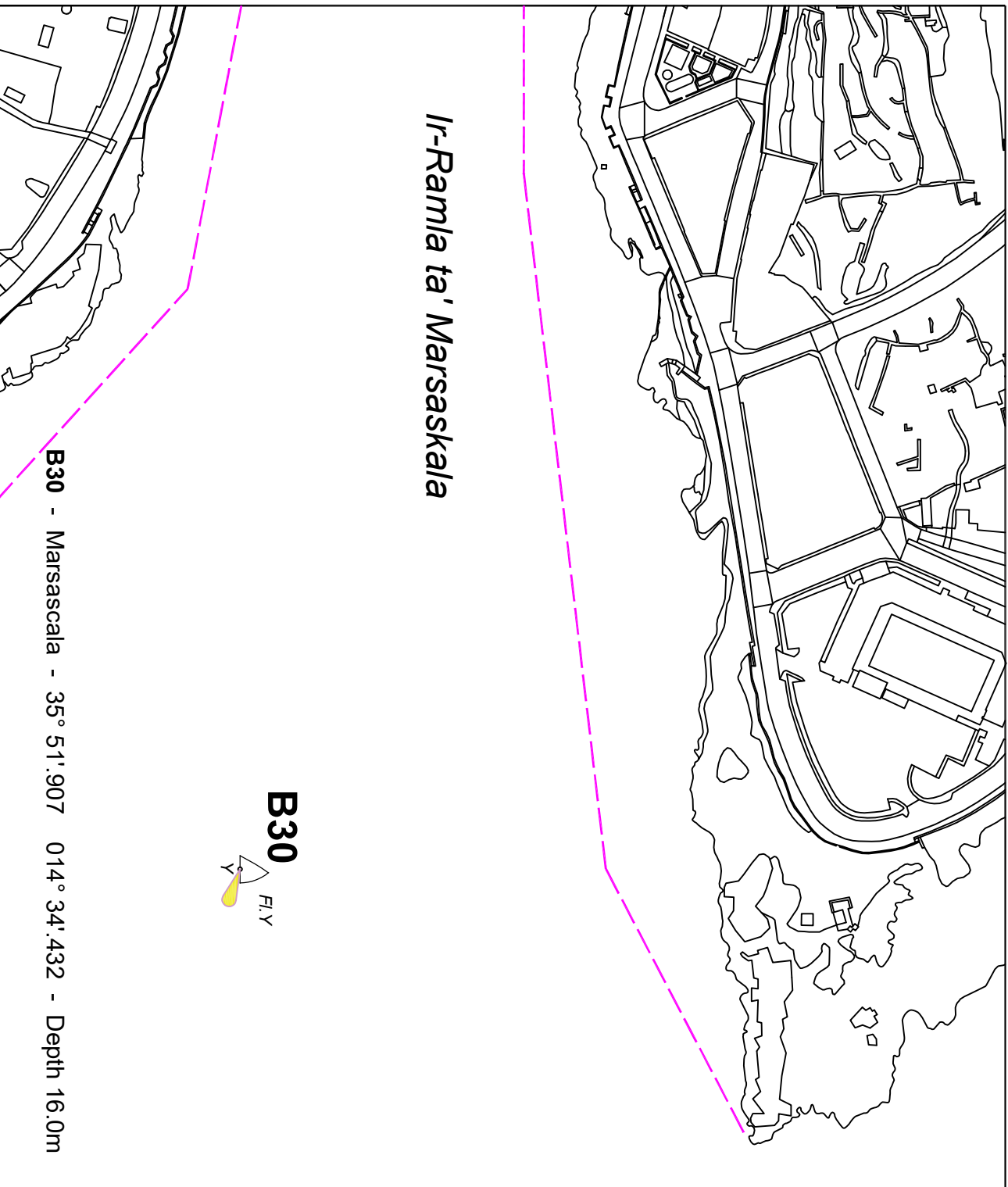
Whilst the Ports and Yachting Directorate, Transport Malta has endeavoured to ensure that the material supplied is suitable for the purpose described, it accepts no liability (to the maximum extent permitted by law) for any damage or loss of any nature arising from its use.  
The material supplied is used entirely at the Recipient's own risk.

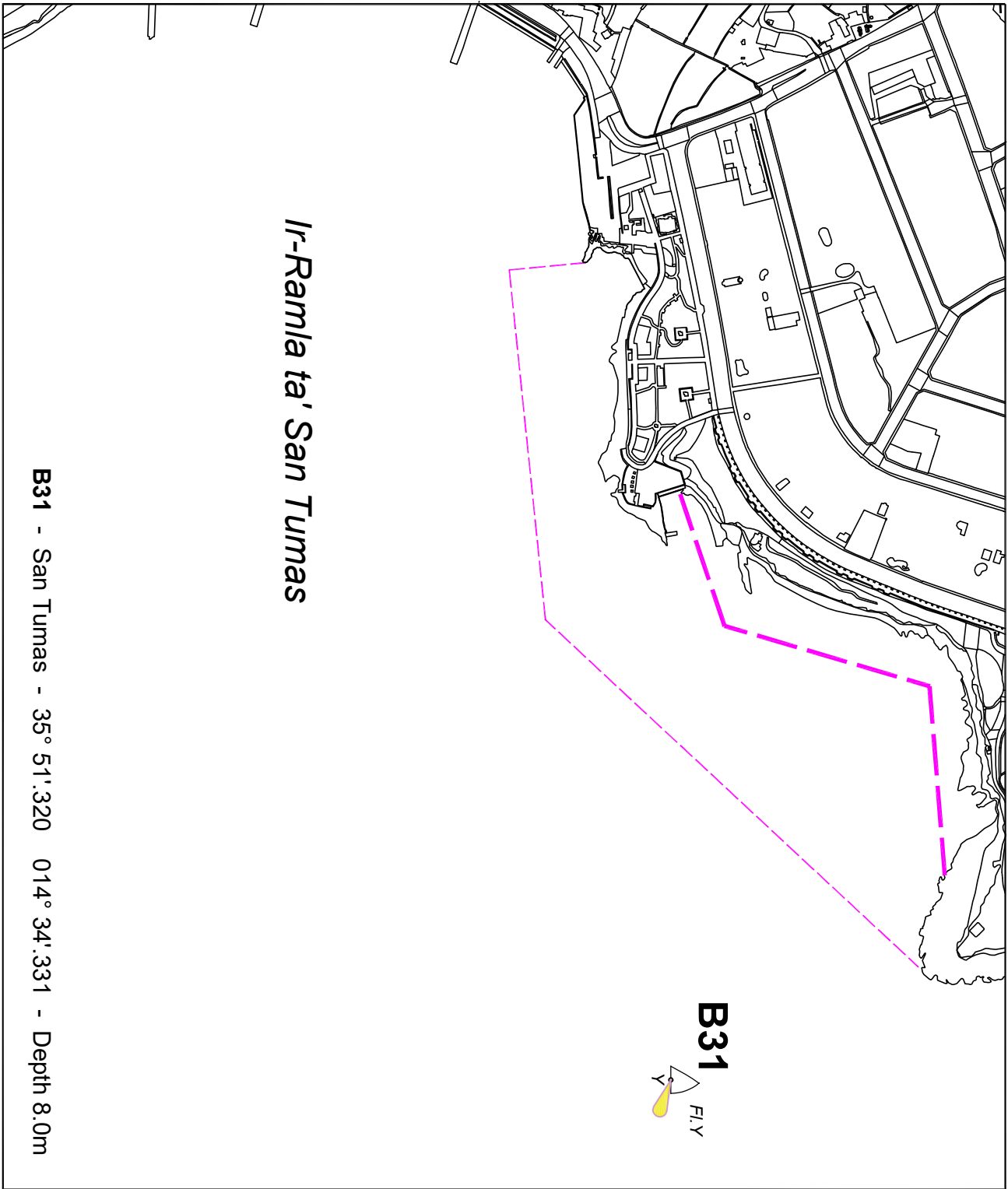
© Transport Malta all rights reserved

**DISCLAIMER**

Whilst the Ports and Yachting Directorate, Transport Malta has endeavoured to ensure that the material supplied is suitable for the purpose described, it accepts no liability (to the maximum extent permitted by law) for any damage or loss of any nature arising from its use.

The material supplied is used entirely at the Recipient's own risk.





© Transport Malta all rights reserved

**DISCLAIMER**

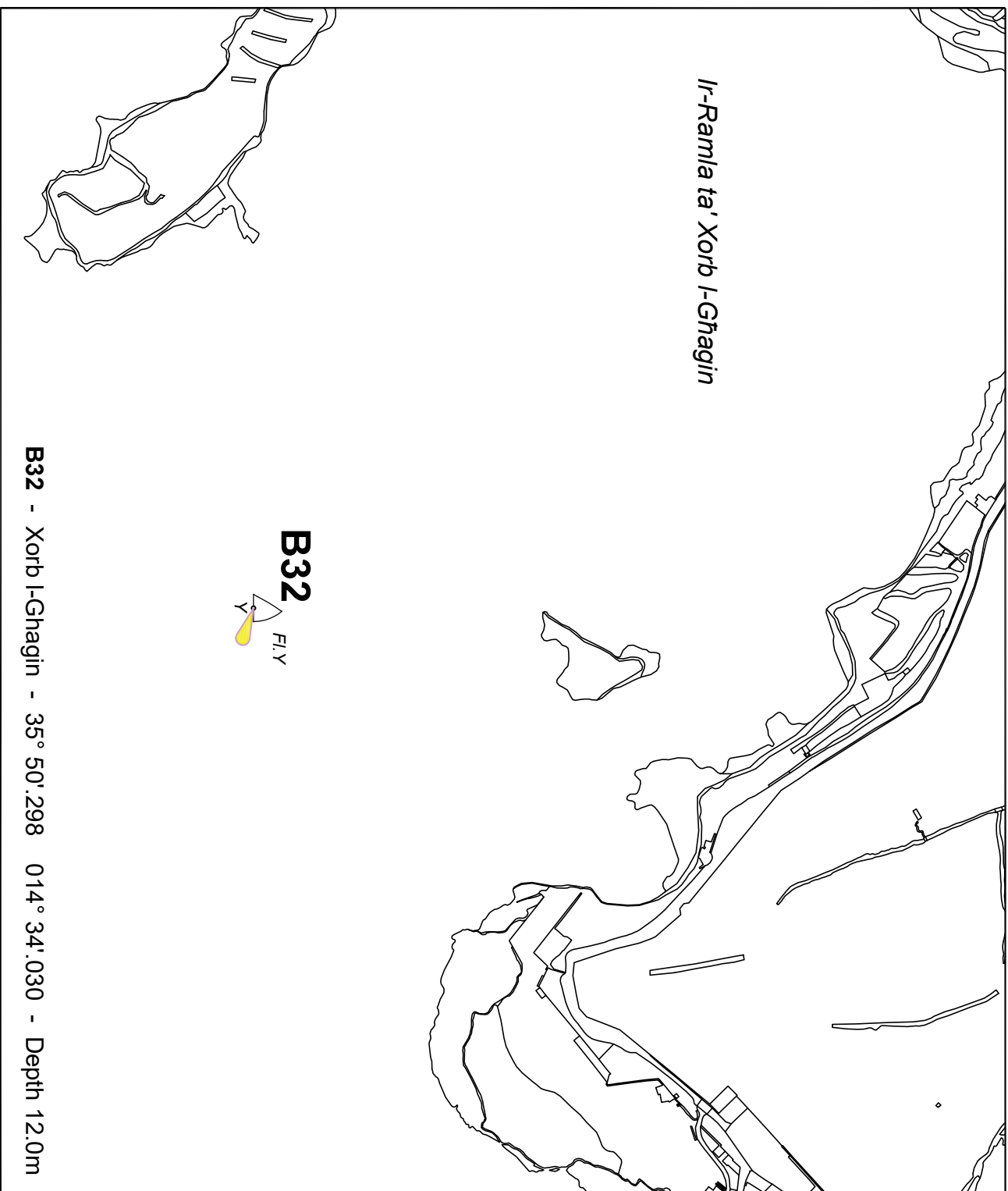
Whilst the Ports and Yachting Directorate, Transport Malta has endeavoured to ensure that the material supplied is suitable for the purpose described, it accepts no liability (to the maximum extent permitted by law) for any damage or loss of any nature arising from its use.  
The material supplied is used entirely at the Recipient's own risk.

© Transport Malta all rights reserved

**DISCLAIMER**

Whilst the Ports and Yachting Directorate, Transport Malta has endeavoured to ensure that the material supplied is suitable for the purpose described, it accepts no liability (to the maximum extent permitted by law) for any damage or loss of any nature arising from its use.

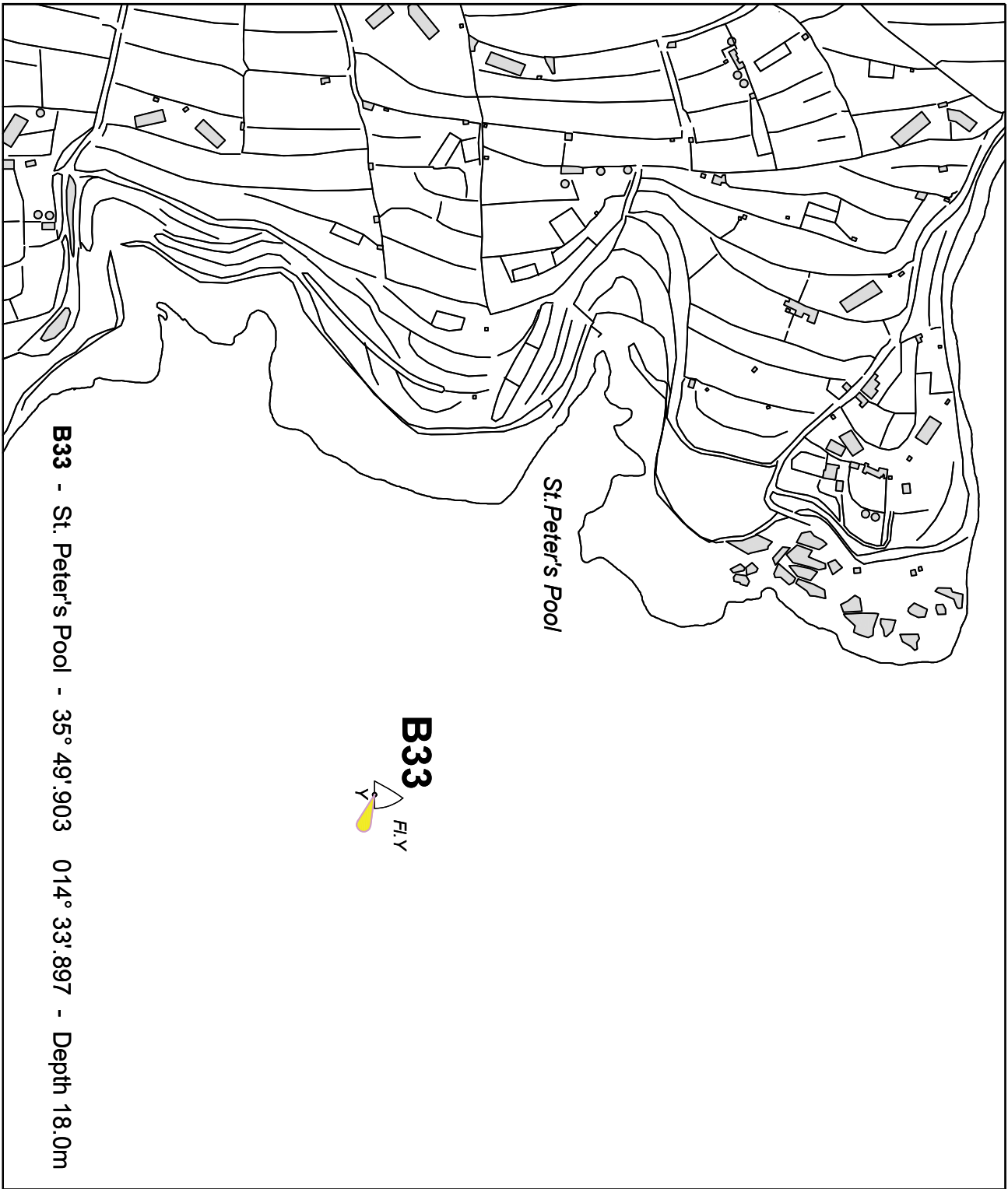
The material supplied is used entirely at the Recipient's own risk.



*Ir-Ramla ta' Xorb I-Ghagin*



**B32** - Xorb I-Ghagin - 35° 50' 298 014° 34' 030 - Depth 12.0m



St. Peter's Pool

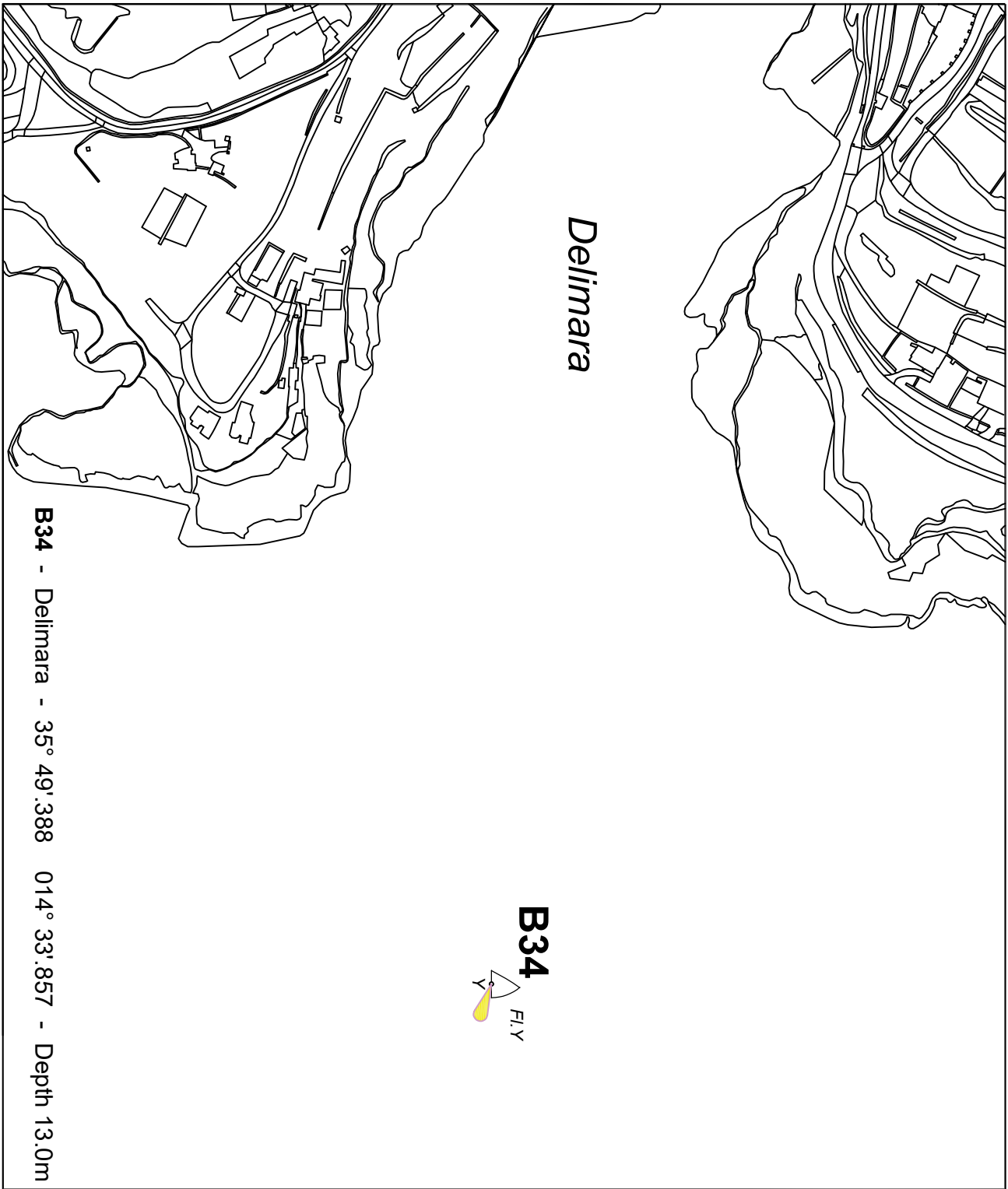


**B33** - St. Peter's Pool - 35° 49' 903 014° 33' 897 - Depth 18.0m

© Transport Malta all rights reserved

**DISCLAIMER**

Whilst the Ports and Yachting Directorate, Transport Malta has endeavoured to ensure that the material supplied is suitable for the purpose described, it accepts no liability (to the maximum extent permitted by law) for any damage or loss of any nature arising from its use.  
The material supplied is used entirely at the Recipient's own risk.



**B34 - Delimara - 35° 49' 388 014° 33' 857 - Depth 13.0m**

© Transport Malta all rights reserved

**DISCLAIMER**

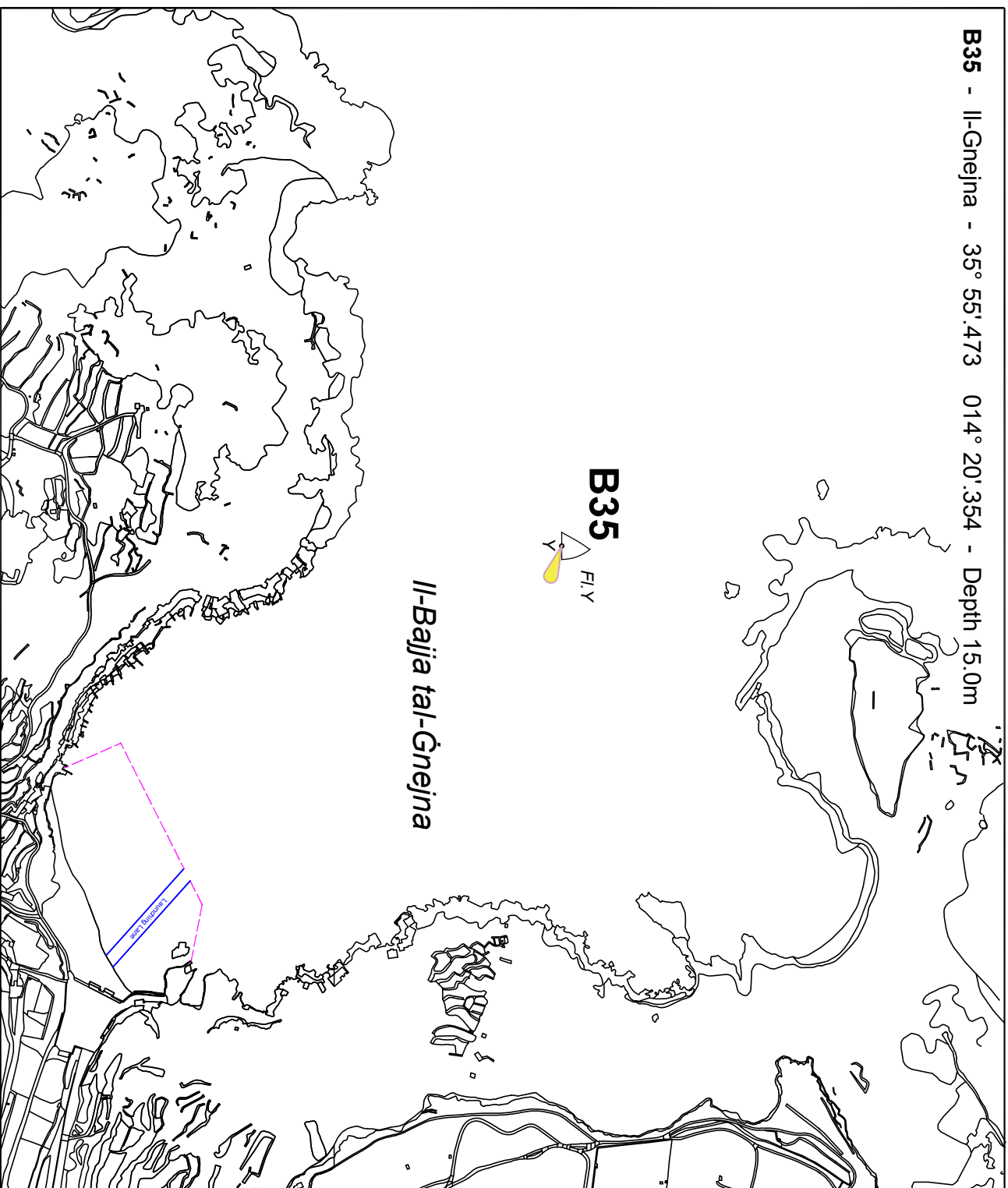
Whilst the Ports and Yachting Directorate, Transport Malta has endeavoured to ensure that the material supplied is suitable for the purpose described, it accepts no liability (to the maximum extent permitted by law) for any damage or loss of any nature arising from its use.  
The material supplied is used entirely at the Recipient's own risk.

**B35 - Il-Gnejna - 35° 55'.473 014° 20'.354 - Depth 15.0m**

**B35**



*Il-Bajja tal-Gnejna*



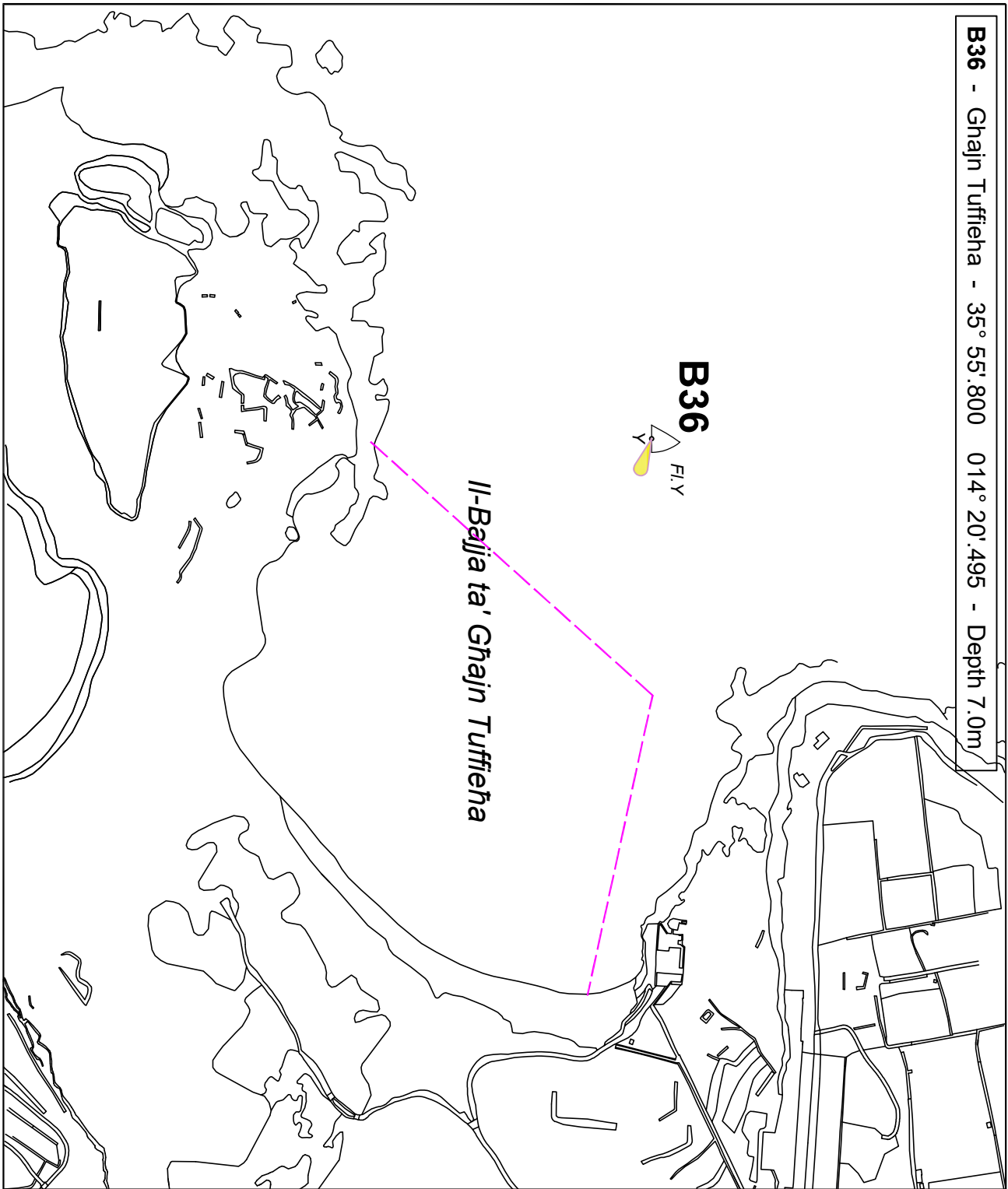
© Transport Malta all rights reserved

**DISCLAIMER**

Whilst the Ports and Yachting Directorate, Transport Malta has endeavoured to ensure that the material supplied is suitable for the purpose described, it accepts no liability (to the maximum extent permitted by law) for any damage or loss of any nature arising from its use.

The material supplied is used entirely at the Recipient's own risk.

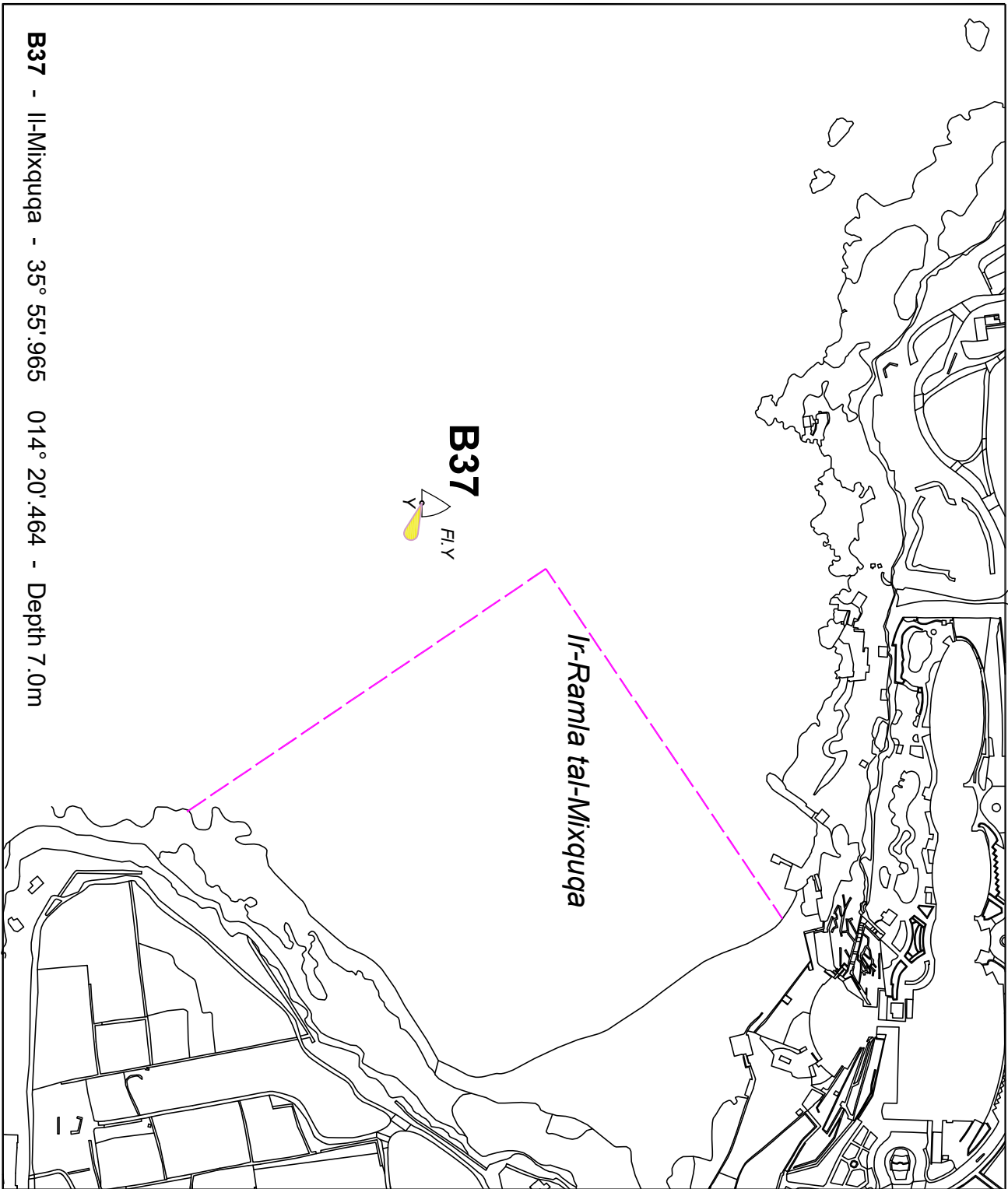
**B36** - Ghajjn Tuffieha - 35° 55'.800 014° 20'.495 - Depth 7.0m



© Transport Malta all rights reserved

**DISCLAIMER**

Whilst the Ports and Yachting Directorate, Transport Malta has endeavoured to ensure that the material supplied is suitable for the purpose described, it accepts no liability (to the maximum extent permitted by law) for any damage or loss of any nature arising from its use.  
The material supplied is used entirely at the Recipient's own risk.



**B37** - Il-Mixquqa - 35° 55' 965 014° 20' 464 - Depth 7.0m

© Transport Malta all rights reserved

**DISCLAIMER**

Whilst the Ports and Yachting Directorate, Transport Malta has endeavoured to ensure that the material supplied is suitable for the purpose described, it accepts no liability (to the maximum extent permitted by law) for any damage or loss of any nature arising from its use.  
The material supplied is used entirely at the Recipient's own risk.