



PORTS AND YACHTING DIRECTORATE

LOCAL NOTICE TO MARINERS N° 096 of 2026

Our Ref: TM/PYD/0001/26

01 June 2026



Transport Malta

Malta Transport Centre
Marsa, MRS 1917
Malta

Tel: (356) 2122 2203
Fax: (356) 2125 0365
Email: info.tm@transport.gov.mt

www.transport.gov.mt

Establishment of a Protected Zone area - Salina Bay

The Ports and Yachting Directorate, Transport Malta, notifies mariners and vessel owners that a protected zone area within Salina Bay has been established.

The protected zone is situated within the area delineated by the imaginary points A, B, C, D, E, and F, and the coastline, as shown on the attached chart:

Points	Latitude (N)	Longitude (E)
A	35° 56'.938	014° 25'.699
B	35° 56'.954	014° 25'.682
C	35° 56'.971	014° 25'.683
D	35° 56'.983	014° 25'.688
E	35° 56'.999	014° 25'.707
F	35° 56'.989	014° 25'.727

Any vessels, moorings, and associated ground tackle left in this area after **Sunday, 14 June 2026**, will be removed. The Authority accepts no liability whatsoever for any damage that may occur during the removal of the said vessels, moorings, and associated ground tackle.

Furthermore, mariners are reminded that it is prohibited to lay any moorings and ground tackle without the prior permission of the Authority and that approaches to marine terminals, maneuvering areas and fairways are to be kept clear at all times.

Failure to comply with the above directions may be subject to legal proceedings.

Chart affected BA 211

Il-Bajjtas-Salina

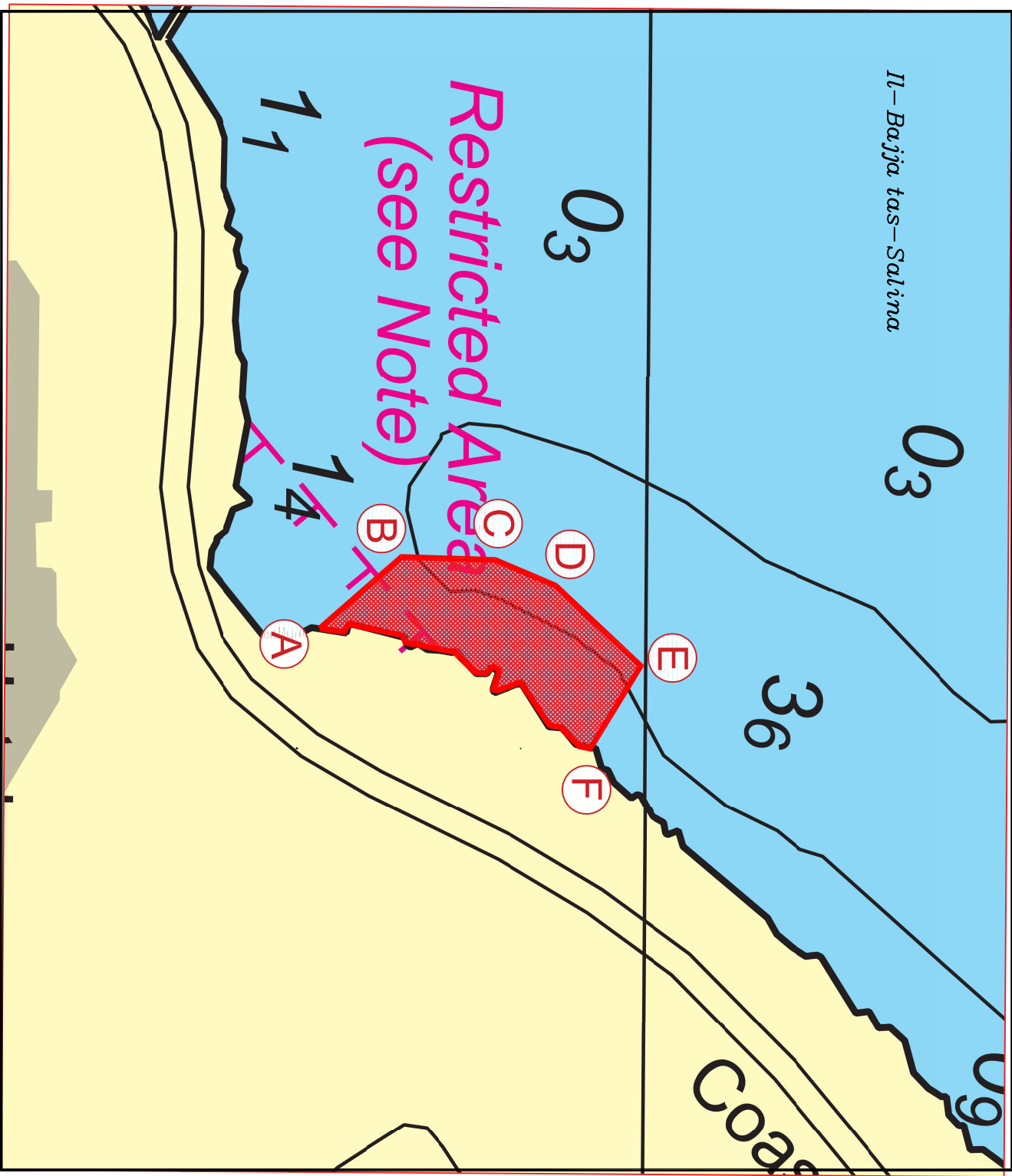
03

03

Restricted Area
(see Note)

36

Coast



© Transport Malta all rights reserved

DISCLAIMER

Whilst the Ports and Yachting Directorate, Transport Malta has endeavoured to ensure that the material supplied is suitable for the purpose described, it accepts no liability (to the maximum extent permitted by law) for any damage or loss of any nature arising from its use.
The material supplied is used entirely at the Recipient's own risk.