



PORTS AND YACHTING DIRECTORATE

LOCAL NOTICE TO MARINERS N° 093 of 2026

Our Ref: **TM/PYD/63/95**

28 May 2026



Transport Malta

Malta Transport Centre,
Triq Pantar, Hal Lija, LJA 2021
Malta

Tel: (356) 2122 2203
Fax: (356) 2125 0365
Email: info.tm@transport.gov.mt

www.transport.gov.mt

Diving in different localities - Marine Non-indigenous Species Monitoring Study

The Ports and Yachting Directorate, Transport Malta, notifies mariners and owners of vessels that diving inspections will be carried out in various locations on any date between Monday 8th June 2026, to Friday 3rd July 2026.

The diving inspections will be held between 0800 hours and 1700 hours, within the areas as follows (as shown in the attached charts):

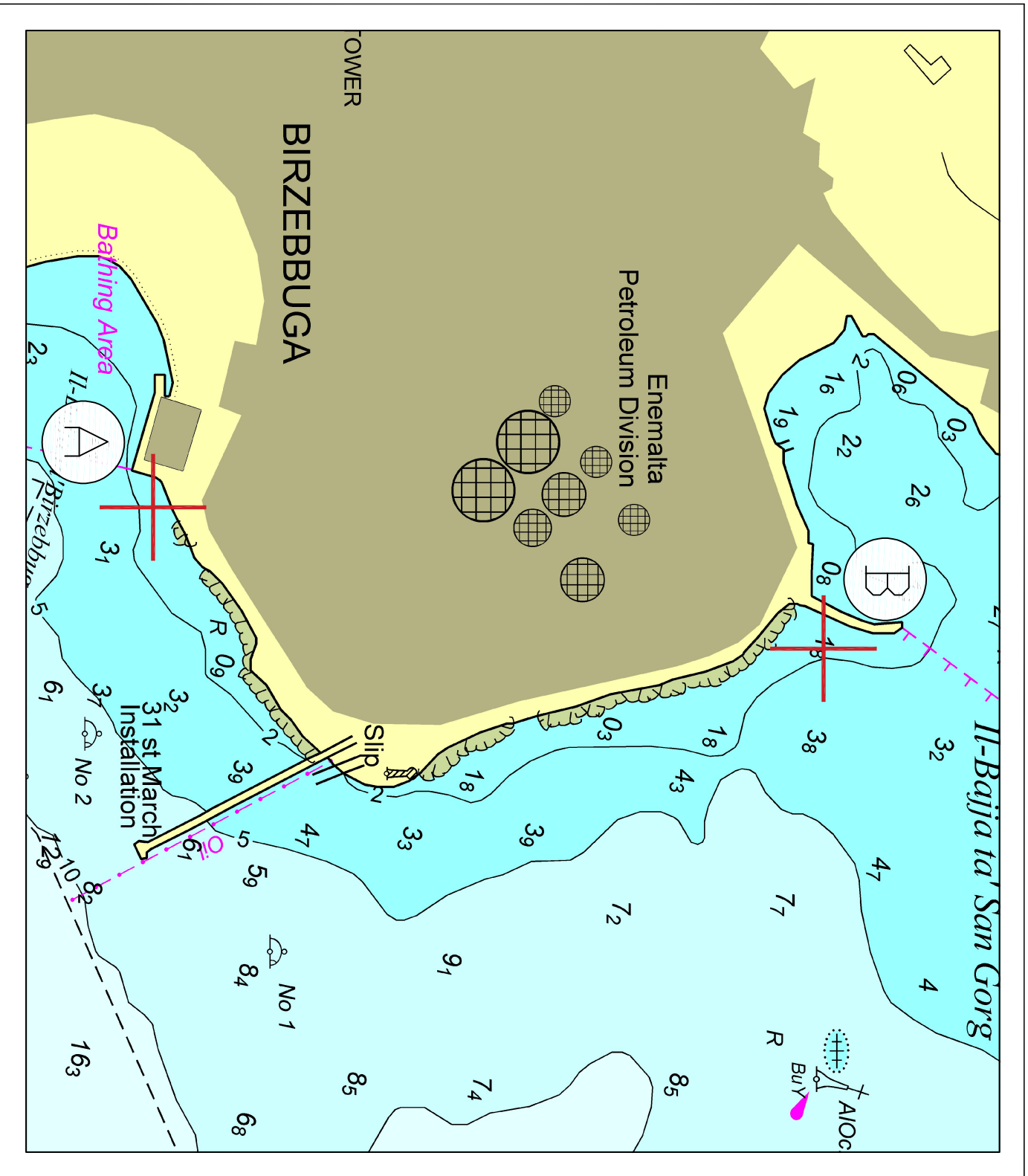
	LATITUDE (N)	LONGITUDE (E)	
A	35°49'.796	14°31'.951	
B	35°49'.524	14°31'.882	Chart A
C	35°50'.120	14°32'.756	
D	35°50'.112	14°33'.110	Chart B
E	35°53'.886	14°30'.033	
F	35°54'.074	14°30'.190	Chart C
G	35°53'.385	14°31'.018	
H	35°53'.357	14°31'.375	Chart D

During the diving inspection, scuba divers will receive guidance from a designated person stationed on the nearby pontoon or quay, where the International Code of Signals flag 'A' will prominently be displayed.

It is crucial for the safety of all involved that all vessels must maintain a minimum distance of 100 meters from the divers whenever they are in sight.

Masters and operators of vessels are advised to keep a sharp lookout, proceed with caution and at safe speed when navigating in the above-mentioned areas. They are to comply with instructions given on VHF Channel 12 and/or 16 by Valletta VTS.

Chart affected: **BA 36, 177**



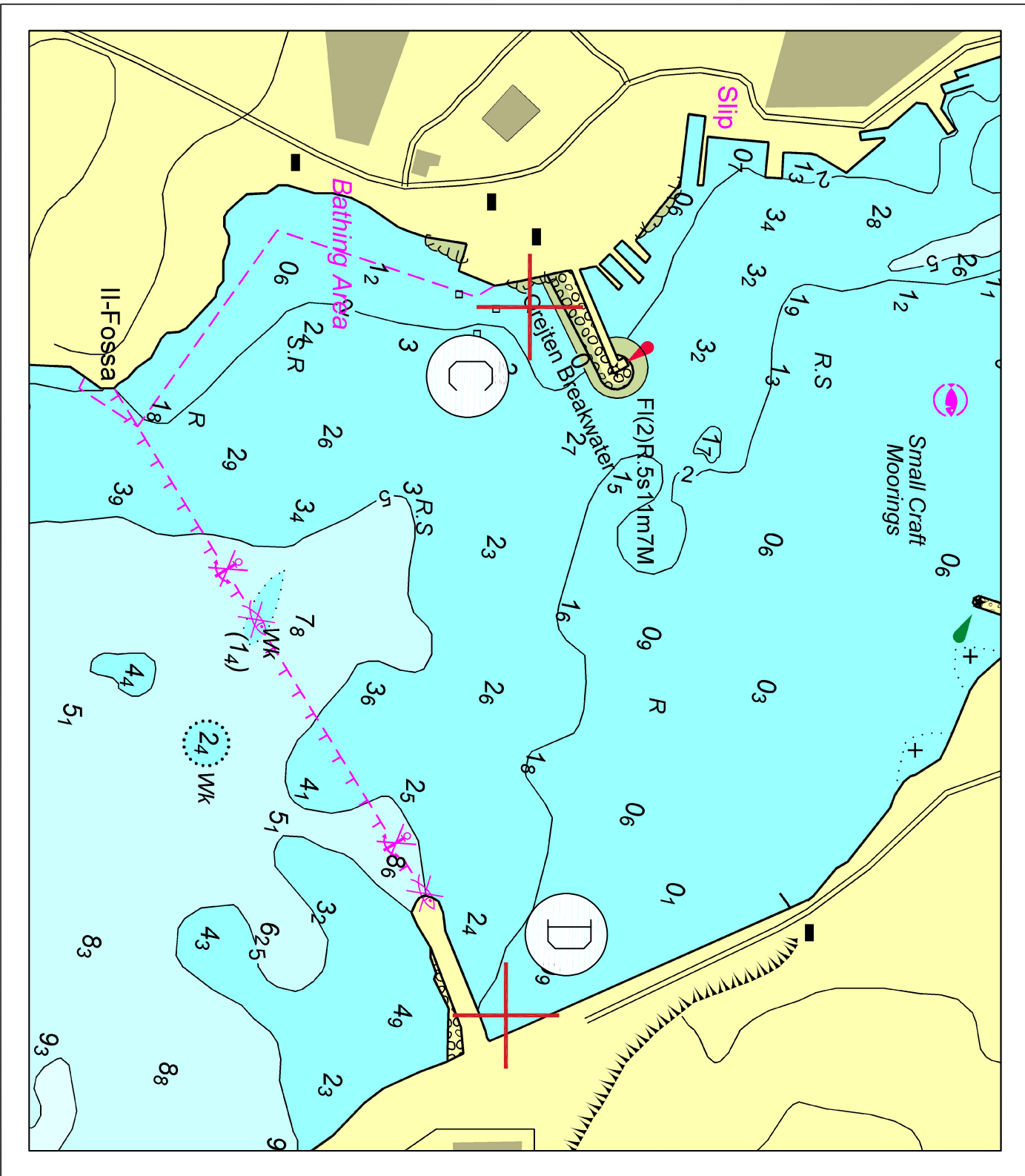
© Transport Malta all rights reserved

DISCLAIMER

Whilst the Ports and Yachting Directorate, Transport Malta has endeavoured to ensure that the material supplied is suitable for the purpose described, it accepts no liability (to the maximum extent permitted by law) for any damage or loss of any nature arising from its use.

The material supplied is used entirely at the Recipient's own risk.

Chart A



© Transport Malta all rights reserved

DISCLAIMER

Whilst the Ports and Yachting Directorate, Transport Malta has endeavoured to ensure that the material supplied is suitable for the purpose described, it accepts no liability (to the maximum extent permitted by law) for any damage or loss of any nature arising from its use.

The material supplied is used entirely at the Recipient's own risk.

Chart B

© Transport Malta all rights reserved

DISCLAIMER

Whilst the Ports and Yachting Directorate, Transport Malta has endeavoured to ensure that the material supplied is suitable for the purpose described, it accepts no liability (to the maximum extent permitted by law) for any damage or loss of any nature arising from its use.

The material supplied is used entirely at the Recipient's own risk.

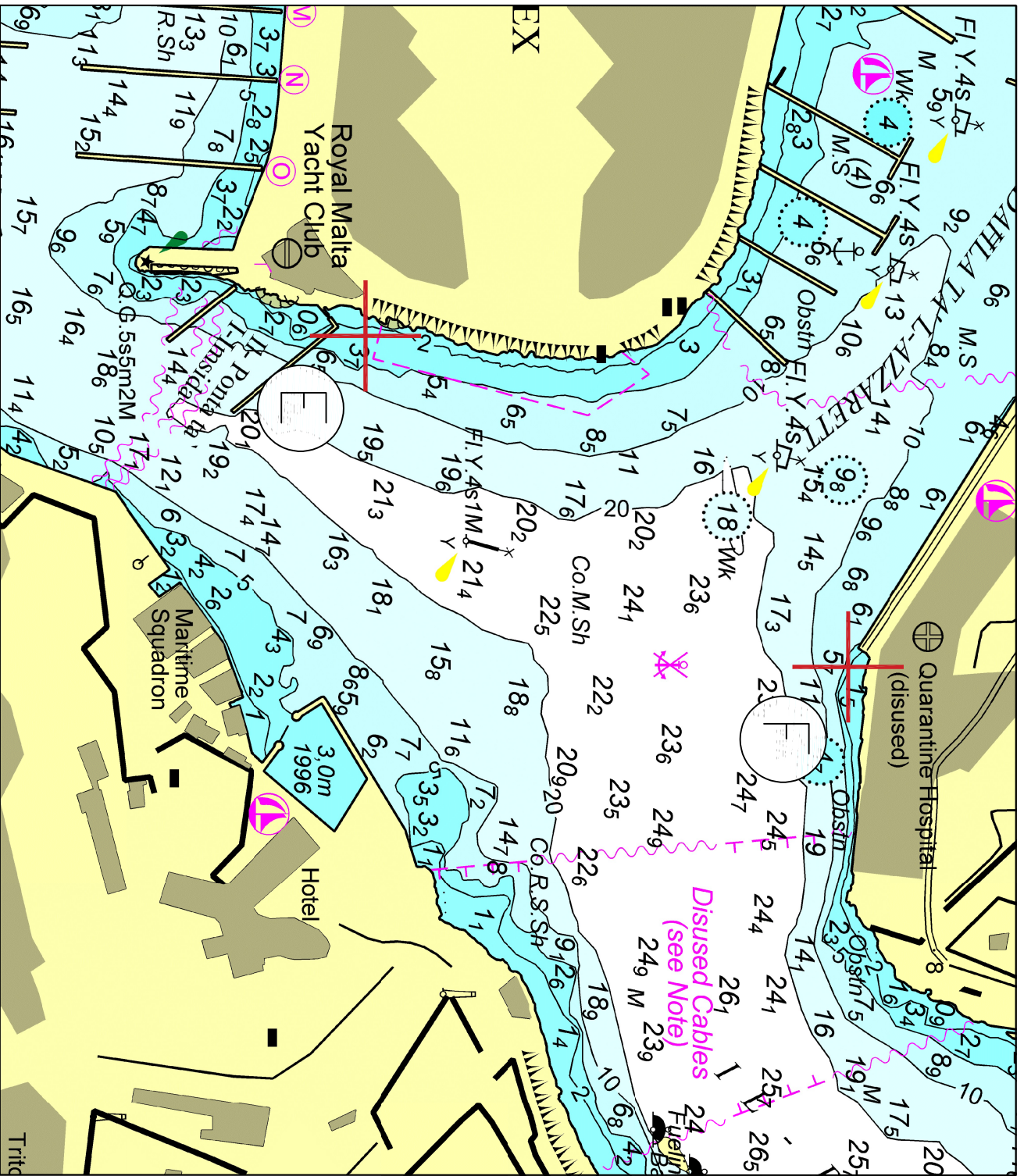
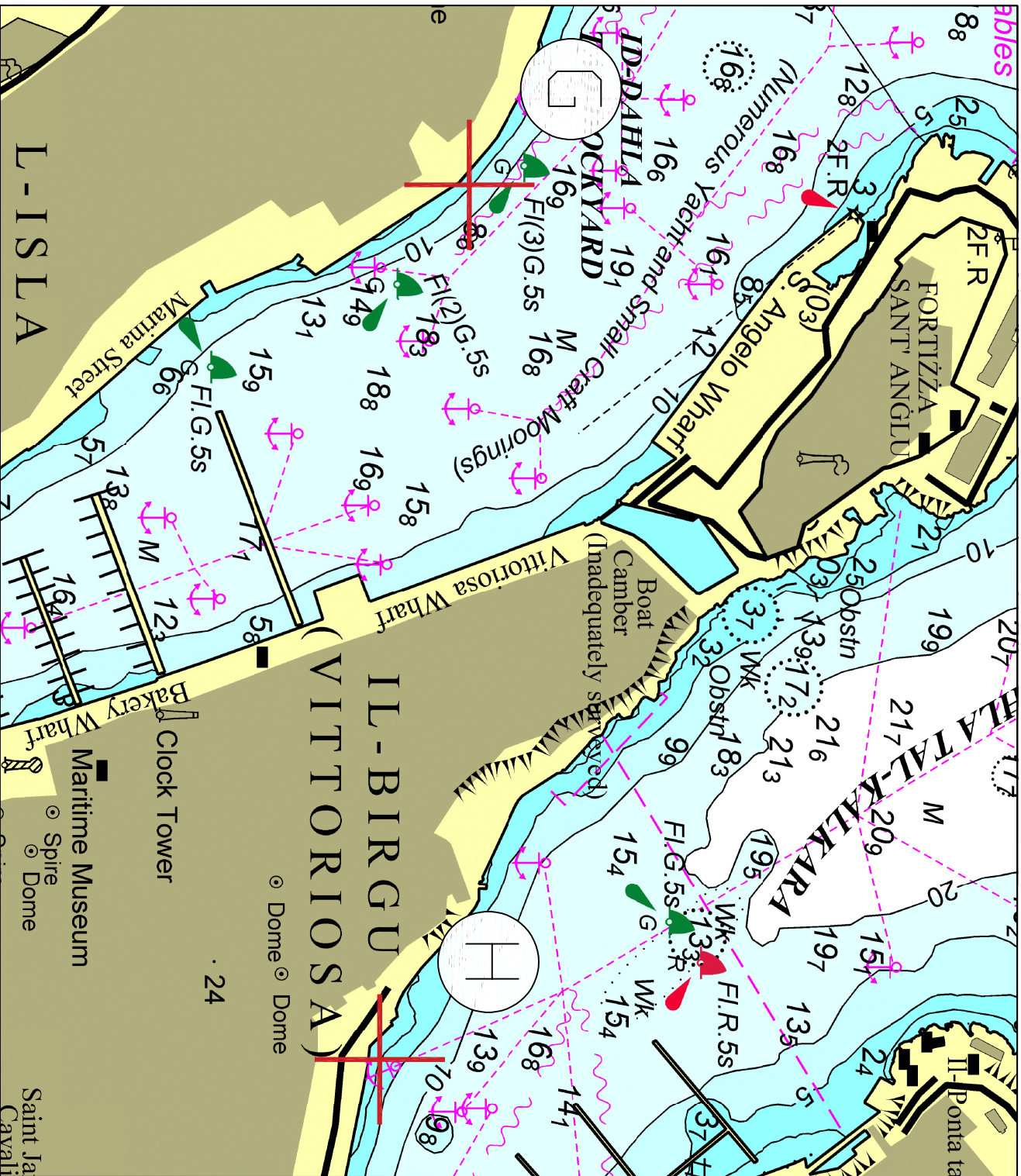


Chart C



© Transport Malta all rights reserved

DISCLAIMER

Whilst the Ports and Yachting Directorate, Transport Malta has endeavoured to ensure that the material supplied is suitable for the purpose described, it accepts no liability (to the maximum extent permitted by law) for any damage or loss of any nature arising from its use.

The material supplied is used entirely at the Recipient's own risk.

Chart D