



PORTS AND YACHTING DIRECTORATE

LOCAL NOTICE TO MARINERS N° 091 of 2025

Our Ref: **TM/PYD/63/95**

17 June 2025



Transport Malta

Malta Transport Centre,
Triq Pantar, Hal Lija, LJA 2021
Malta

Tel: (356) 2122 2203
Fax: (356) 2125 0365
Email: info.tm@transport.gov.mt

www.transport.gov.mt

Remotely Operated Vehicle (ROV) video footage survey within Cirkewwa Marine Park

The Ports and Yachting Directorate, Transport Malta, notifies mariners that a survey will be carried out with the use of a Remotely Operated Vehicle (ROV).

This Local Notice to Mariners is to be read in conjunction with the following:

Notice to Mariners N° 25 of 2020 - Special Mark buoys indicating a Wreck –
SEASONAL (Consolidated List - 2020)
Local Notice to Mariners N° 113 of 2024 - Conservation Areas around Wrecks –
Updated August 2024

The survey will consist of video footage within the area A, B, C, D, E and the intermediate coastline, as shown on the attached chart.

	Latitude (N)	Longitude (E)
A	35° 59'.415	014° 19'.750
B	35° 59'.656	014° 19'.435
C	35° 59'.363	014° 19'.220
D	35° 58'.955	014° 19'.812
E	35° 59'.160	014° 19'.811

The survey will start on Wednesday 25th June 2025 and will be completed by Saturday 28th June 2025.

The ROV will be operated from either the support vessel '*MV Atlantis II*' or '*MV Sea Star*' which will be restricted in her ability to manoeuvre.

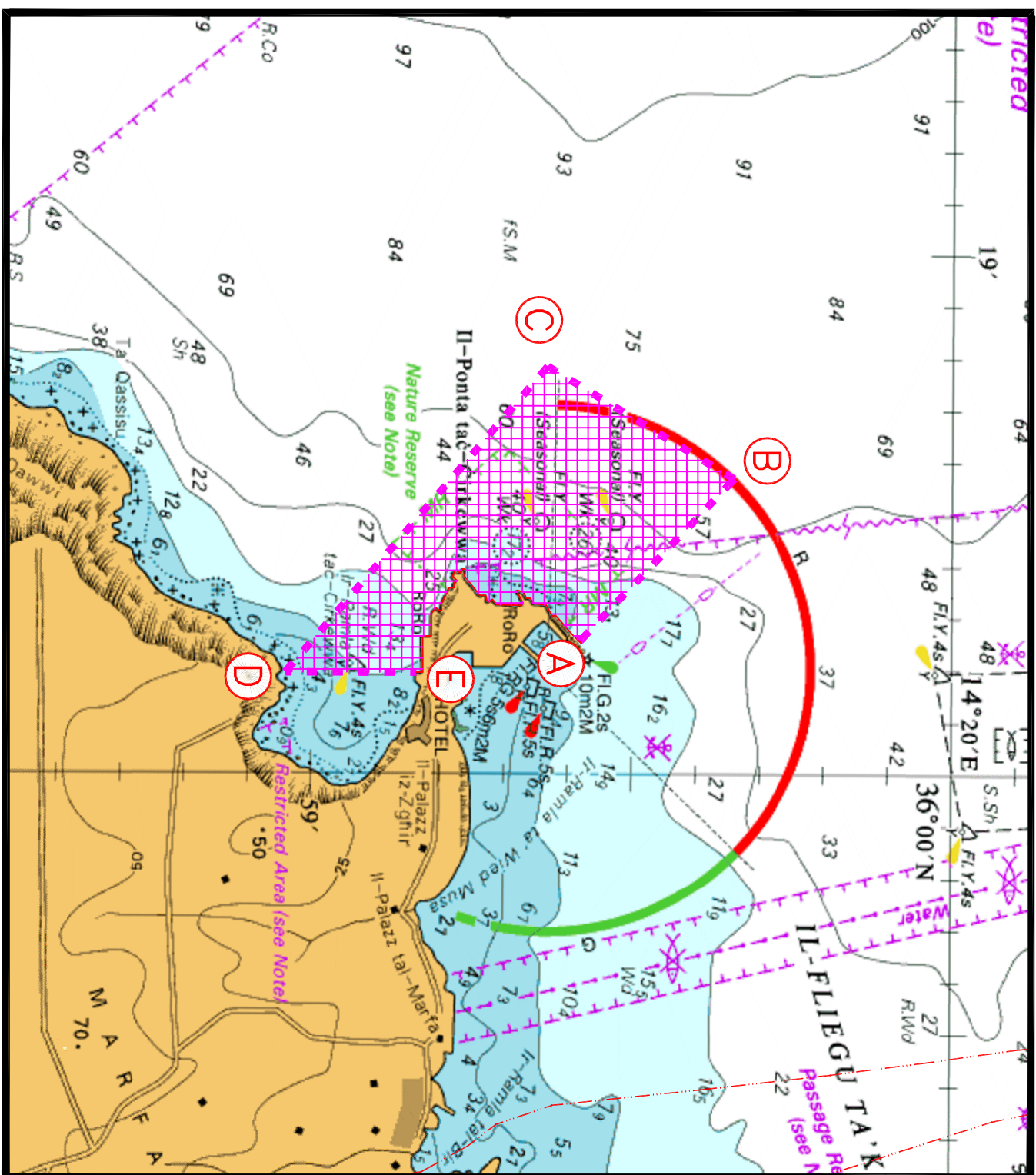
Mariners are instructed to navigate with caution when in the vicinity of the above-mentioned areas, they are to maintain a safe distance of 200m from the ROV and support vessel.



Transport Malta

All mariners are to cooperate with the contractor and to comply with any instructions given on VHF Channel 12 and/or 16, by Valletta VTS.

Charts Affected: **BA 211, 2537**



© British Crown Copyright 1970, 1983, 1986, 1988, 1999, 2000
All rights reserved.

The UK Hydrographic Office makes the accompanying data
Available to Malta Maritime Authority (Transport Malta)
Under the terms and conditions of agreement HO 1427/020930/01.

DISCLAIMER

Whilst the UK Hydrographic Office has endeavoured to ensure
That the material supplied is suitable for the purpose described,
It accepts no liability (to the maximum extent permitted by law)
For any damage or loss of any nature arising from its use.
The material supplied is used entirely at the Recipient's own risk.