



PORTS AND YACHTING DIRECTORATE

Transport Malta

LOCAL NOTICE TO MARINERS No 088 of 2020

Our Ref: **TM/PYD/26/95/2**

Malta Transport Centre
Marsa, MRS 1917
Malta

Tel: (356) 2122 2203
Fax: (356) 2125 0365
Email: info.tm@transport.gov.mt

05 August 2020

www.transport.gov.mt

Firework Displays from Bighi Point in Grand Harbour - Vittoriosa Feast

The Ports and Yachting Directorate, Transport Malta, notifies that firework displays will be let off from Bighi Point in connection with the feast of St. Lawrence.

The displays will be let off from point A (as shown on attached chart) on the following days and times:

Sunday 9 th August 2020	from 0800 hours to 0815 hours, from 1200 hours to 1215 hours and from 1930 hours to 2000 hours.
Monday 10 th August 2020	from 0800 hours to 0815 hours, from 1200 hours to 1215 hours and from 2030 hours till 2130 hours.

Position:	LATITUDE (N)	LONGITUDE (E)
A	35°53'.616	14°31'.447

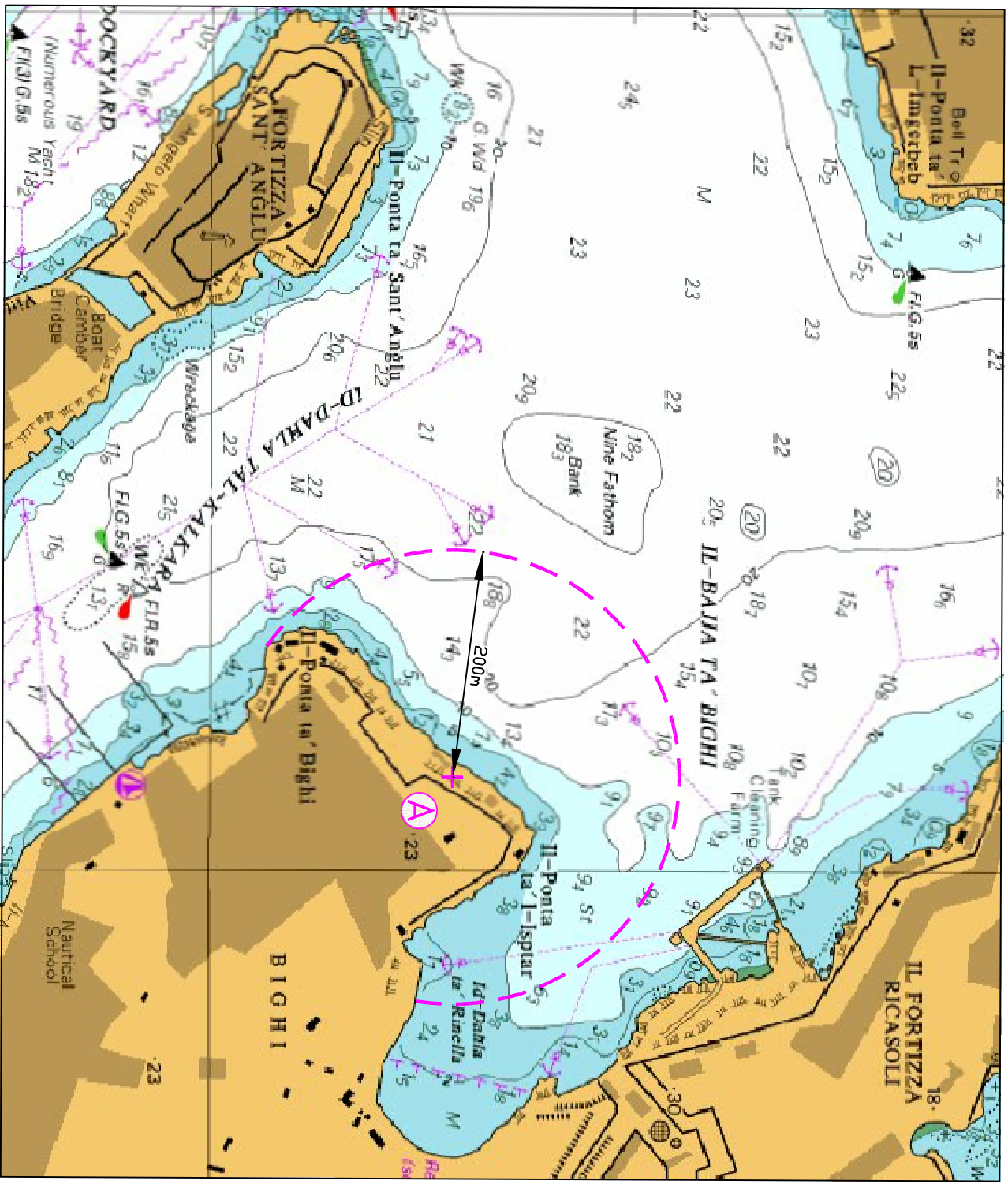
All vessels moored within the 200m radius from point A are to be removed during the displays.

Transport Malta will accept no Liabilities whatsoever for any damage caused to vessels that are within the 200m distance during the above-mentioned dates and times.

Mariners are to navigate with caution and slow speed. Instructions and directions given by Valletta Port Control (Valletta VTS) on VHF channel 12 are to be complied with.

Position are referred to **WGS 84 Datum.**

Chart affected: **BA 177**



© British Crown Copyright 1970, 1983, 1986, 1988, 1999, 2000
 All rights reserved.

The UK Hydrographic Office makes the accompanying data
 Available to Malta Maritime Authority (Transport Malta)
 Under the terms and conditions of agreement HO 1427/020930/01.

DISCLAIMER

Whilst the UK Hydrographic Office has endeavoured to ensure
 That the material supplied is suitable for the purpose described,
 It accepts no liability (to the maximum extent permitted by law)
 For any damage or loss of any nature arising from its use.
 The material supplied is used entirely at the Recipient's own risk.