



PORTS AND YACHTING DIRECTORATE

LOCAL NOTICE TO MARINERS N° 064 OF 2026

Our Ref: TM/PYD/83/97

14 April 2026



Transport Malta

Malta Transport Centre,
Triq Pantar, Hal Lija, LJA 2021
Malta

Tel: (356) 2122 2203
Fax: (356) 2125 0365
Email: info.tm@transport.gov.mt

www.transport.gov.mt

Voomquest - UIM V2 Class World Championship Race – 2026 - re-Issued

The Ports and Yachting Directorate, Transport Malta, hereby notifies mariners that the Voomquest - UIM V2 Class World Championship Race - 2026 will be held within the Grand Harbour (Valletta Port) and off Sliema between Friday 17th April 2026 and Sunday 19th April 2026, weather permitting.

Races within the Grand Harbour.

On Friday 17th April 2026, race buoys will be laid at points X, Y and Z (as shown on the attached chart A) before the start and will be removed on completion of the races.

POSITION	LATITUDE (N)	LONGITUDE (E)
M	35° 54'.058	014° 31'.446
N	35° 54'.790	014° 31'.094
O	35° 54'.522	014° 30'.744

Races within the Grand Harbour will be held on Friday 17th April 2026 between 1000 hours and 1200 hours and between 1400 hours and 1600 hours. During these times, traffic within the Grand Harbour will be prohibited.

Races off Sliema

Races are scheduled to take place between 0800 hours and 1800 hours on Saturday 18th and Sunday 19th April 2026.

A number of buoys may also be laid within the above-mentioned restricted area each day to show the course in the following positions: A, A1, B, C, D, E, F, G, and H, as indicated on the attached chart B.



Transport Malta

Navigation will be restricted within the area bounded by the imaginary lines joining the points U, V, W, X, Y, Z and the intermediate coastlines, on each day.

All vessels are to proceed offshore from the above-mentioned race buoys between 0700 hours and 1900 hours from Saturday 18th April 2026 to Sunday 19th April 2026.

POSITION	LATITUDE (N)	LONGITUDE (E)	
U	35° 54'.422	014° 30'.909	Shore
V	35° 54'.514	014° 31'.246	
W	35° 54'.892	014° 31'.604	
X	35° 55'.981	014° 30'.718	
Y	35° 55'.943	014° 30'.039	
Z	35° 55'.134	014° 29'.930	Shore

POSITION	LATITUDE (N)	LONGITUDE (E)	
A	35° 55'.107	014° 30'.271	Chequered
A1	35° 55'.168	014° 30'.346	Chequered
B	35° 55'.287	014° 30'.075	Yellow buoy
C	35° 55'.701	014° 30'.145	Yellow buoy
D	35° 55'.813	014° 30'.388	Yellow buoy
E	35° 55'.756	014° 30'.678	Yellow buoy
F	35° 55'.204	014° 30'.890	Red buoy
G	35° 54'.980	014° 31'.307	Yellow buoy
H	35° 54'.777	014° 31'.355	Yellow buoy
I	35° 54'.582	014° 31'.148	Yellow buoy
J	35° 54'.605	014° 30'.844	Yellow buoy
K	35° 54'.929	014° 30'.563	Red buoy

The above-mentioned buoys will all be removed at the end of each day.

If due to unfavourable weather conditions, the Race off Slime cannot be held, straight line races will be held within the Grand Harbour as shown on the attached Chart A

Mariners are instructed not to enter the restricted area on the dates and times stated above.



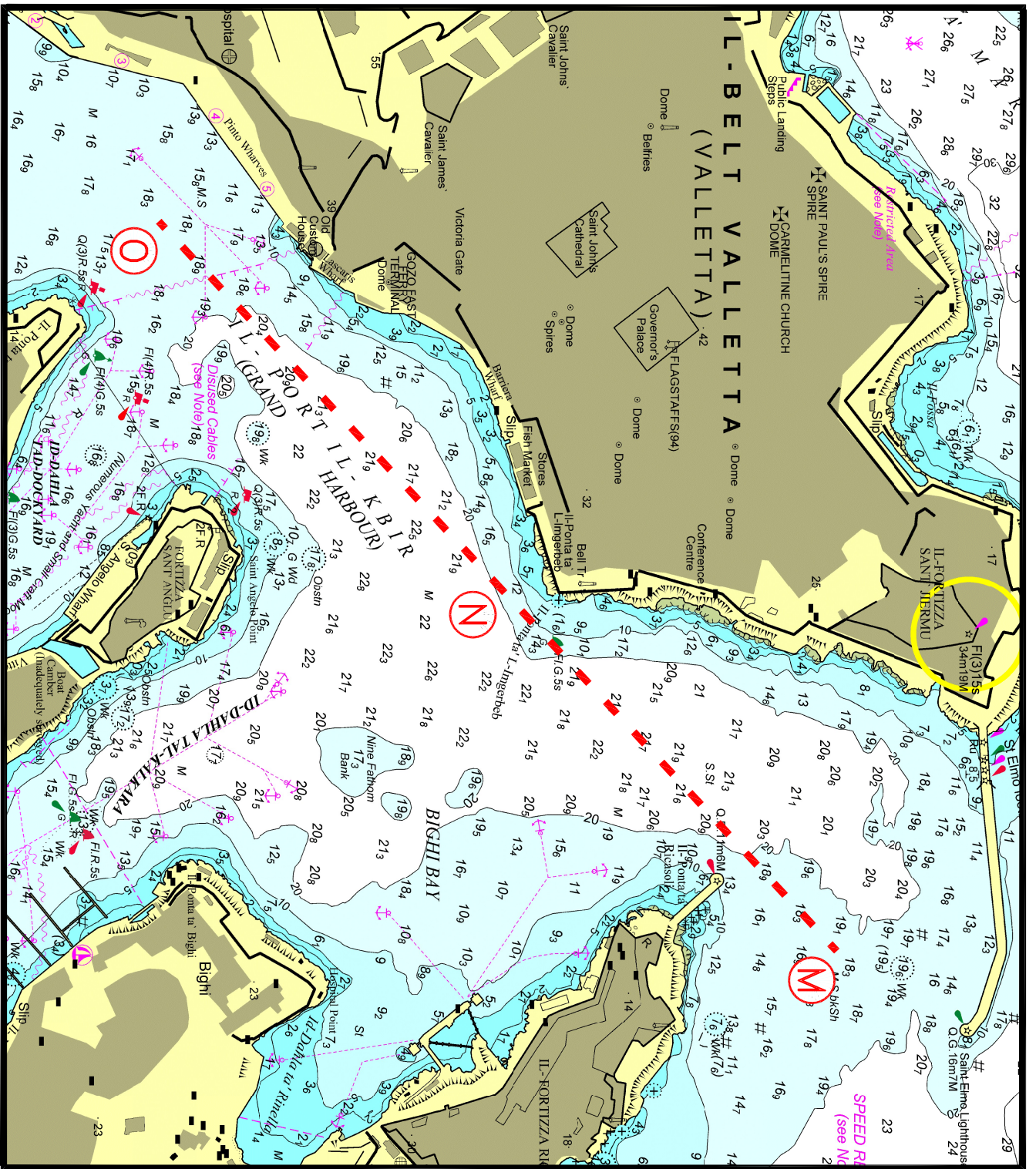
Mariners and owners of vessels are also advised that the loading and unloading berths at Breakwater - Spinola Bay and Sliema Waterpolo Pitch – Sliema are temporary restricted for use on Saturday 18th April 2026 and Sunday 19th April 2026 between 0800 hours and 1800 hours as shown on Chart C.

They are to cooperate with the organizers and Maritime Enforcement officers in the area. Moreover, they are to comply with instructions given on VHF Channel 12 and/or 16 by Valletta VTS.

Local Notice to Mariners No 060 of 2026 is hereby Cancelled.

Charts Affected: **BA 177, 194, 2537 and 2538**

Positions referred to WGS 84 DATUM



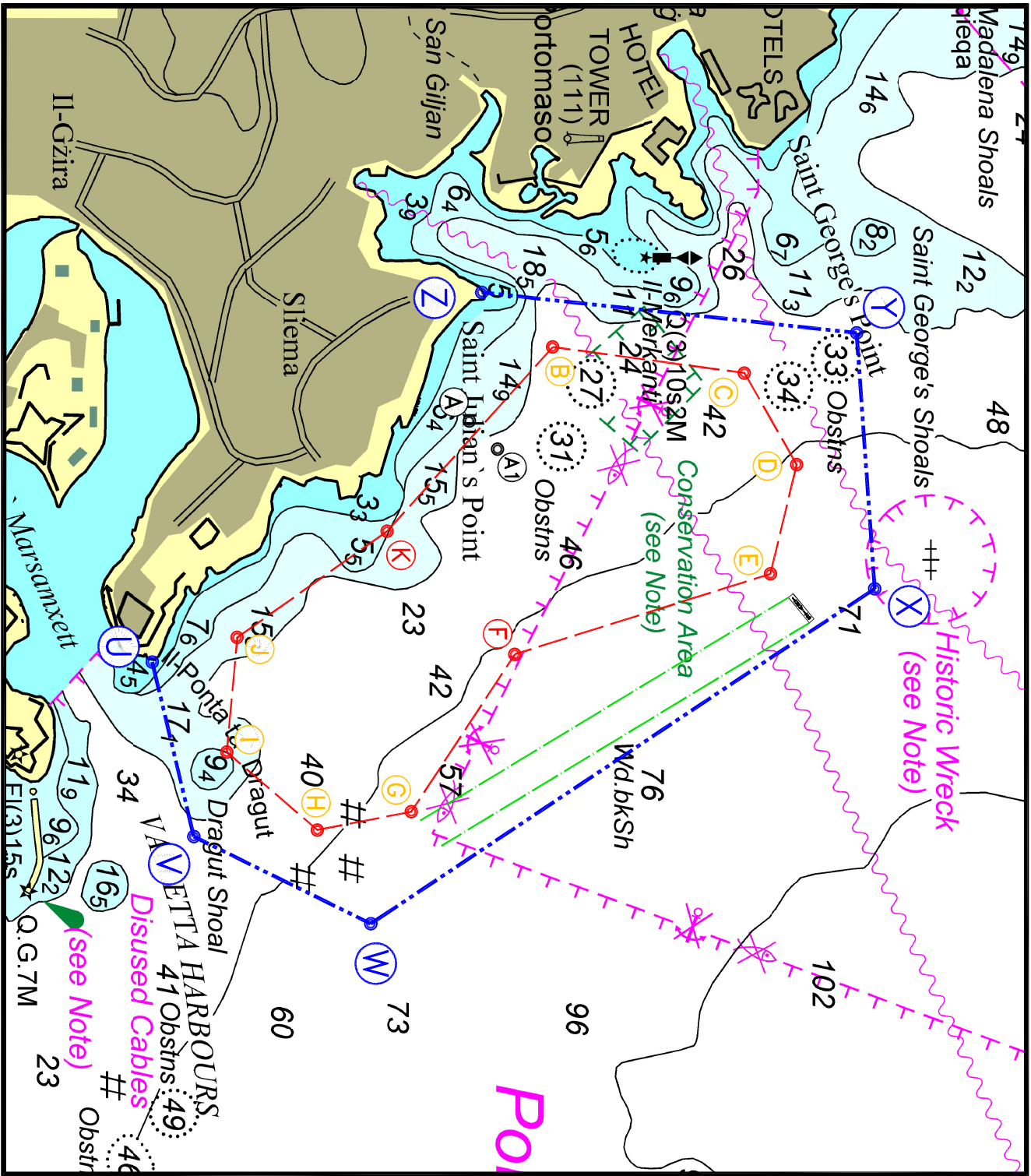
© British Crown Copyright: 1970, 1983, 1986, 1988, 1999, 2000
 All rights reserved.

The UK Hydrographic Office makes the accompanying data
 Available to Malta Maritime Authority (Transport Malta)
 Under the terms and conditions of agreement HO 1427/020930/01.

DISCLAIMER

Whilst the UK Hydrographic Office has endeavoured to ensure
 That the material supplied is suitable for the purpose described,
 It accepts no liability (to the maximum extent permitted by law)
 For any damage or loss of any nature arising from its use.
 The material supplied is used entirely at the Recipient's own risk.

Chart A



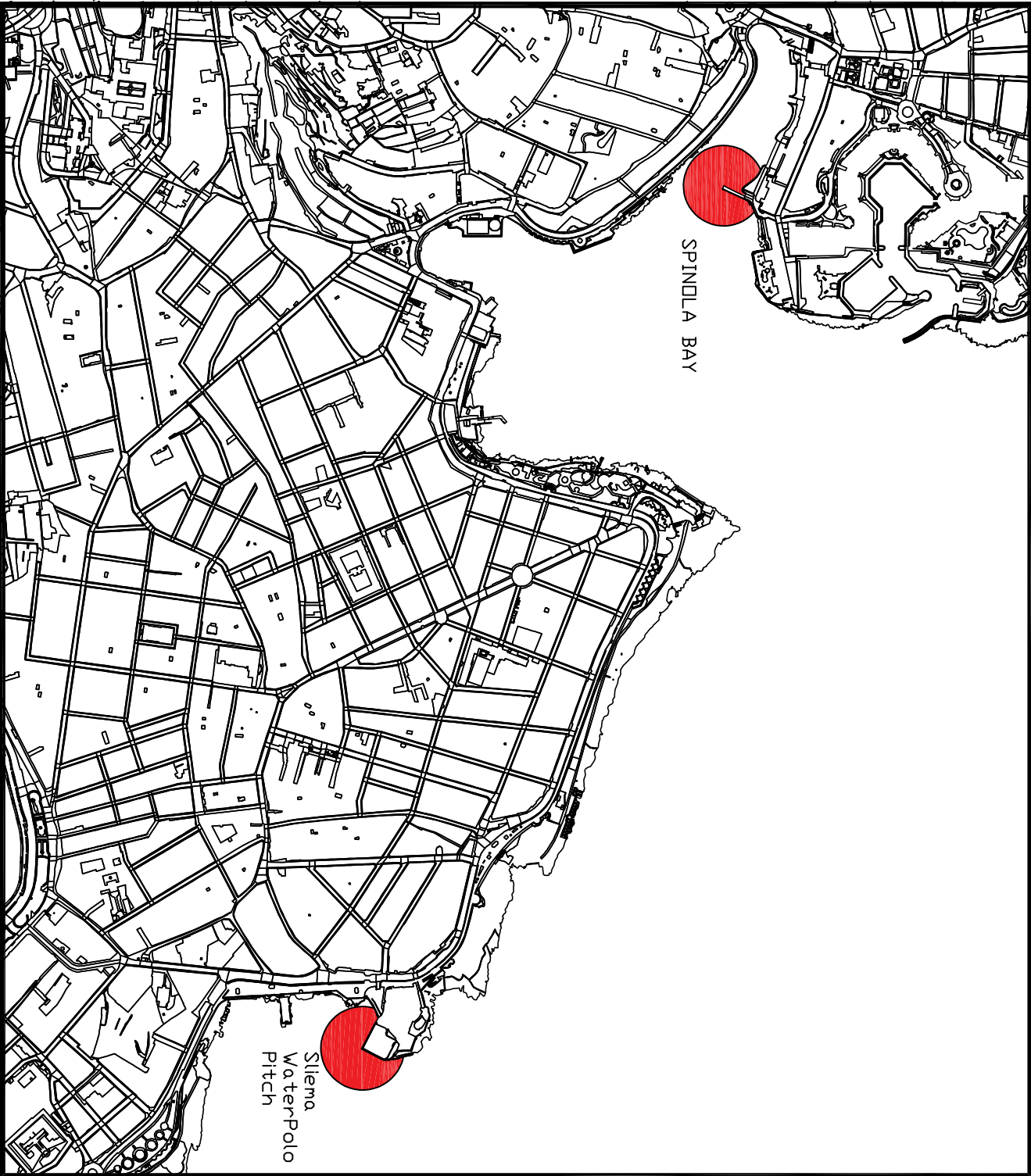
© British Crown Copyright 1970, 1983, 1986, 1988, 1999, 2000
 All rights reserved.

The UK Hydrographic Office makes the accompanying data
 Available to Malta Maritime Authority (Transport Malta)
 Under the terms and conditions of agreement HO 1427/020930/01.

DISCLAIMER

Whilst the UK Hydrographic Office has endeavoured to ensure
 that the material supplied is suitable for the purpose described,
 it accepts no liability (to the maximum extent permitted by law)
 for any damage or loss of any nature arising from its use.
 The material supplied is used entirely at the Recipient's own risk.

Chart B



© Transport Malta all rights reserved

DISCLAIMER

Whilst the Ports and Yachting Directorate, Transport Malta has endeavoured to ensure that the material supplied is suitable for the purpose described, it accepts no liability (to the maximum extent permitted by law) for any damage or loss of any nature arising from its use.

The material supplied is used entirely at the Recipient's own risk.

Chart C