



PORTS AND YACHTING DIRECTORATE

LOCAL NOTICE TO MARINERS N° 063 of 2025

Our Ref: **TM/PYD/83/97**

13 April 2026



Transport Malta

Malta Transport Centre
Marsa, MRS 1917
Malta

Tel: (356) 2122 2203
Fax: (356) 2125 0365
Email: info.tm@transport.gov.mt

www.transport.gov.mt

Light Drone Display - Grand Harbour

The Ports and Yachting Directorate, Transport Malta, notifies mariners that a Light Drone Display will be held inside the Grand Harbour.

The Light Drone Displays will be held on the following dates and times:

| | |
|---|---|
| Friday 24th April 2026 | between 2100 hours and 2359 hours. |
| Saturday 25th April 2026 | between 2000 hours and 2359 hours. |
| Wednesday 29th April 2026 | between 2100 hours and 2359 hours. |
| Thursday 30th April 2026 | between 2000 hours and 2359 hours. |

If, due to adverse weather conditions, the Light Drone Display cannot be held on Thursday 30th April 2026, it will be held on any day between Friday 1st May 2026 and Sunday 3rd May 2026 at the same times.

The area is formed by joining Points A, B, C, D, E, and F and the intermediate coastline (as shown on the attached chart).

| POSITION | LATITUDE (N) | LONGITUDE (E) |
|----------|--------------|---------------|
| A | 35° 53'.577 | 014° 31'.092 |
| B | 35° 53'.605 | 014° 31'.075 |
| C | 35° 53'.696 | 014° 31'.151 |
| D | 35° 53'.665 | 014° 31'.215 |
| E | 35° 53'.572 | 014° 31'.136 |
| F | 35° 53'.561 | 014° 31'.135 |

All timings are in Local Time.

Mariners are hereby directed to avoid transiting in the above-mentioned area to the extent possible.

Valletta VTS will be managing the movement of vessels on VHF channel 12 within the Grand Harbour.



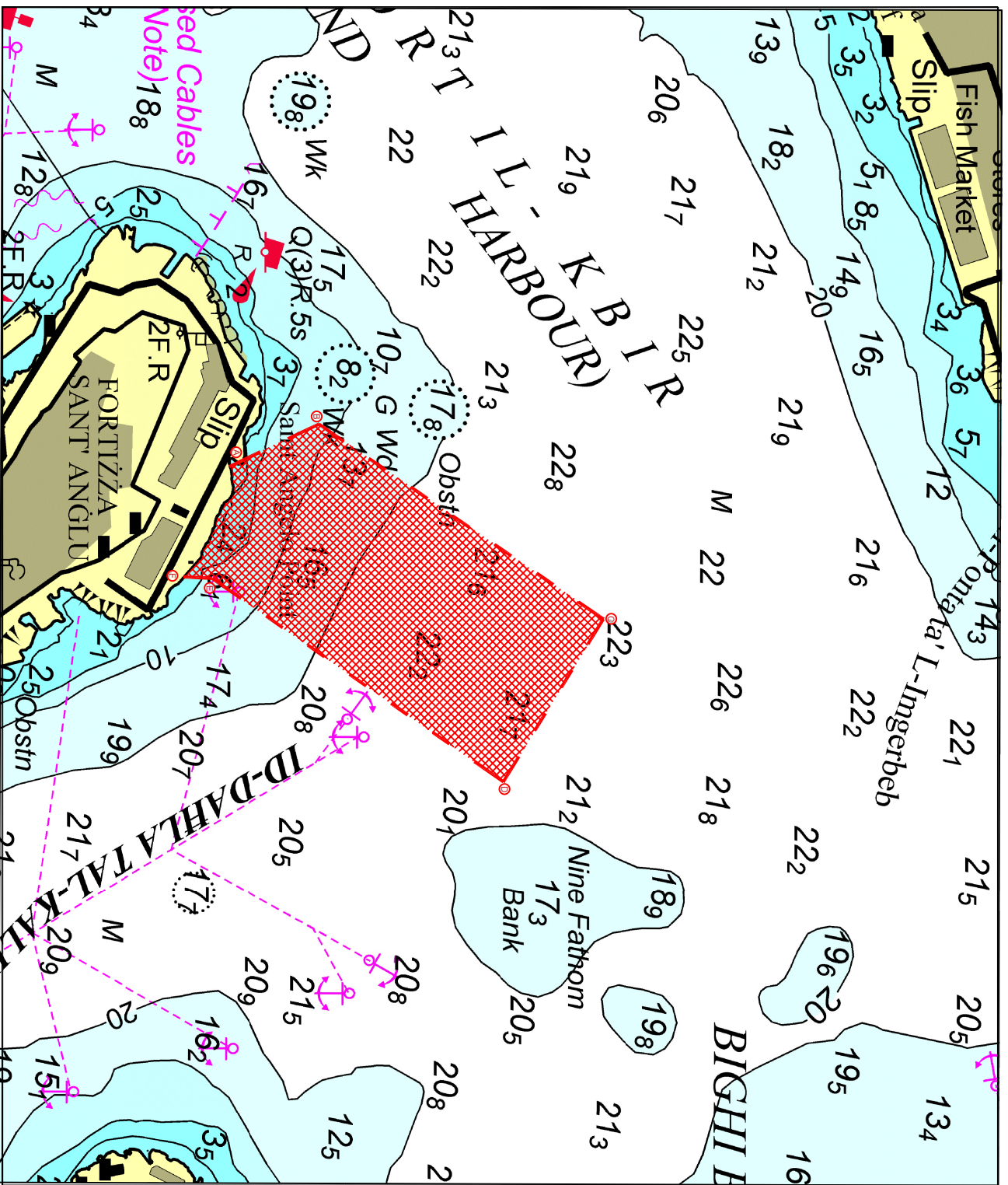
Transport Malta

Mariners are advised to keep a sharp lookout and navigate with caution when in the vicinity, on the stipulated dates and times.

They are to cooperate with the organisers and to comply with any instructions issued on VHF channel 12 and/or 16 by Valletta VTS and by any Enforcement Personnel on site.

Positions are in WGS 84 Datum.

Chart affected: BA Charts 177.



© Transport Malta all rights reserved

DISCLAIMER

Whilst the Ports and Yachting Directorate, Transport Malta has endeavoured to ensure that the material supplied is suitable for the purpose described, it accepts no liability (to the maximum extent permitted by law) for any damage or loss of any nature arising from its use.

The material supplied is used entirely at the Recipient's own risk.