



PORTS AND YACHTING DIRECTORATE

Transport Malta

LOCAL NOTICE TO MARINERS N° 059 of 2026

Our Ref: **TM/PYD/139/92**

Malta Transport Centre
Marsa, MRS 1917
Malta

Tel: (356) 2122 2203
Fax: (356) 2125 0365
Email: info.tm@transport.gov.mt

09 April 2026

www.transport.gov.mt

Zones reserved for swimmers in Blue Lagoon, Comino

The Ports and Yachting Directorate, Transport Malta, hereby notifies all mariners, owners of vessels and bathers, that an area within Blue Lagoon - Comino is being reserved as a Swimmers Zone with immediate effect, as shown in the attached Chart.

The physical perimeter delineating the swimmer zone will be established in due course.

No vessels or objects that may endanger the safety of bathers, including any type of fishing gear/implements, shall be used within the designated area. The swimmers' zone is being reserved exclusively for bathers and is delineated by the following coordinates: -

Position	Latitude (N)	Longitude (E)	
1A	36° 00'.893	014° 19'.281	(Shore)
1B	36° 00'.898	014° 19'.289	
1C	36° 00'.859	014° 19'.322	
1D	36° 00'.836	014° 19'.402	
1E	36° 00'.846	014° 19'.440	
1F	36° 00'.851	014° 19'.452	(Shore)
1G	36° 00'.740	014° 19'.390	(Shore)
1H	36° 00'.751	014° 19'.472	(Shore)
1I	36° 00'.977	014° 19'.424	(Shore)
1J	36° 00'.947	014° 19'.450	(Shore)
1K	36° 00'.937	014° 19'.456	(Shore)
1L	36° 00'.922	014° 19'.459	(Shore)

A minimum safety distance of 5 meters from the swimmers' zone must be maintained.

Mariners are advised to keep a good lookout and navigate with caution and at slow speed in the North Comino Channel when entering the Blue Lagoon.

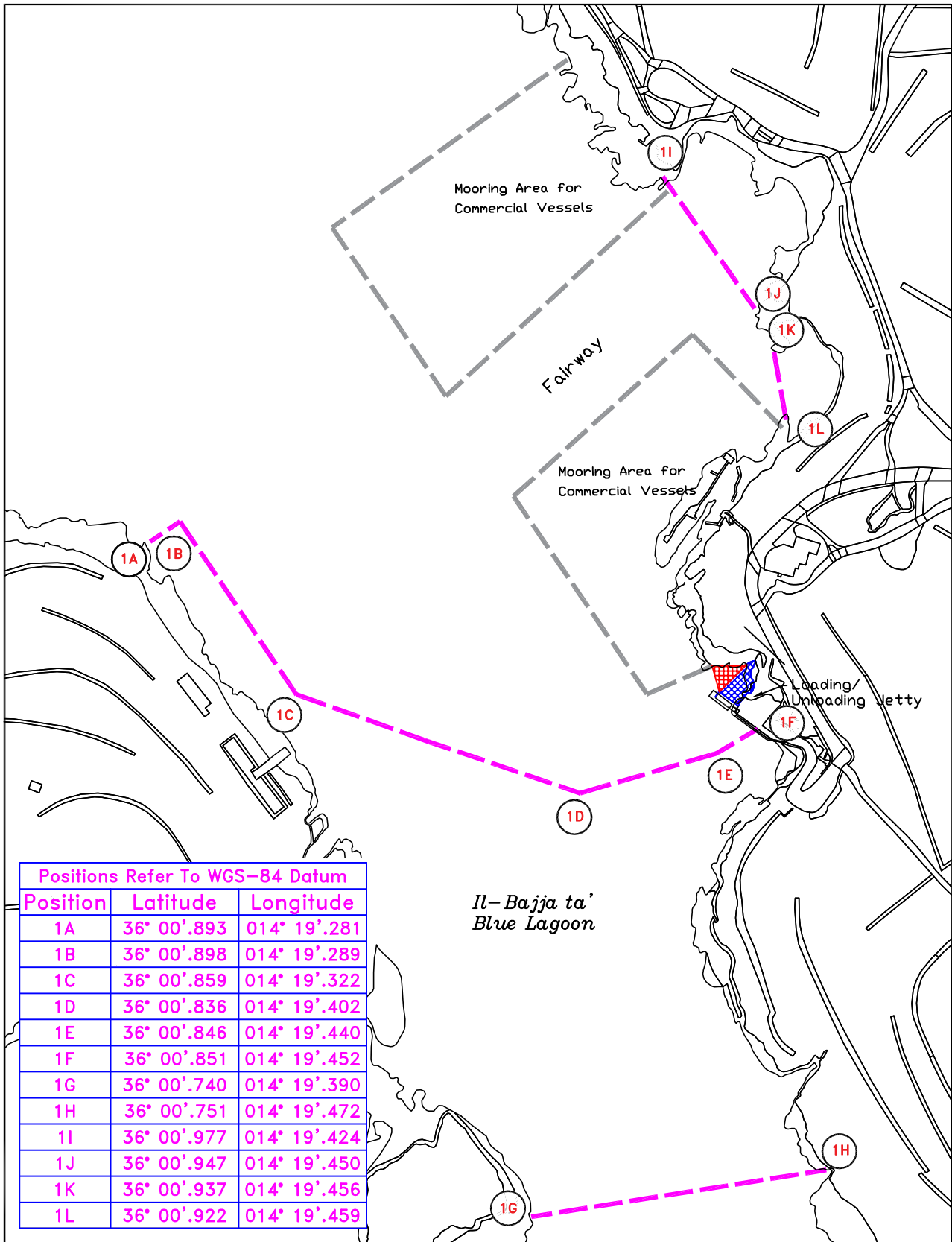


Transport Malta

For the benefit of safety of all bathers and mariners, Transport Malta urges all visitors and commercial vessels to adhere to these arrangements. Enforcement Officers will be randomly patrolling the area. Any offender, on conviction, shall be liable to the fines (multa) as laid down in the second column to the Third Schedule of the Small Ships Regulations, as amended.

All positions are referred to **WGS 84 DATUM**.

Chart Affected: **BA 211**



© Transport Malta all rights reserved

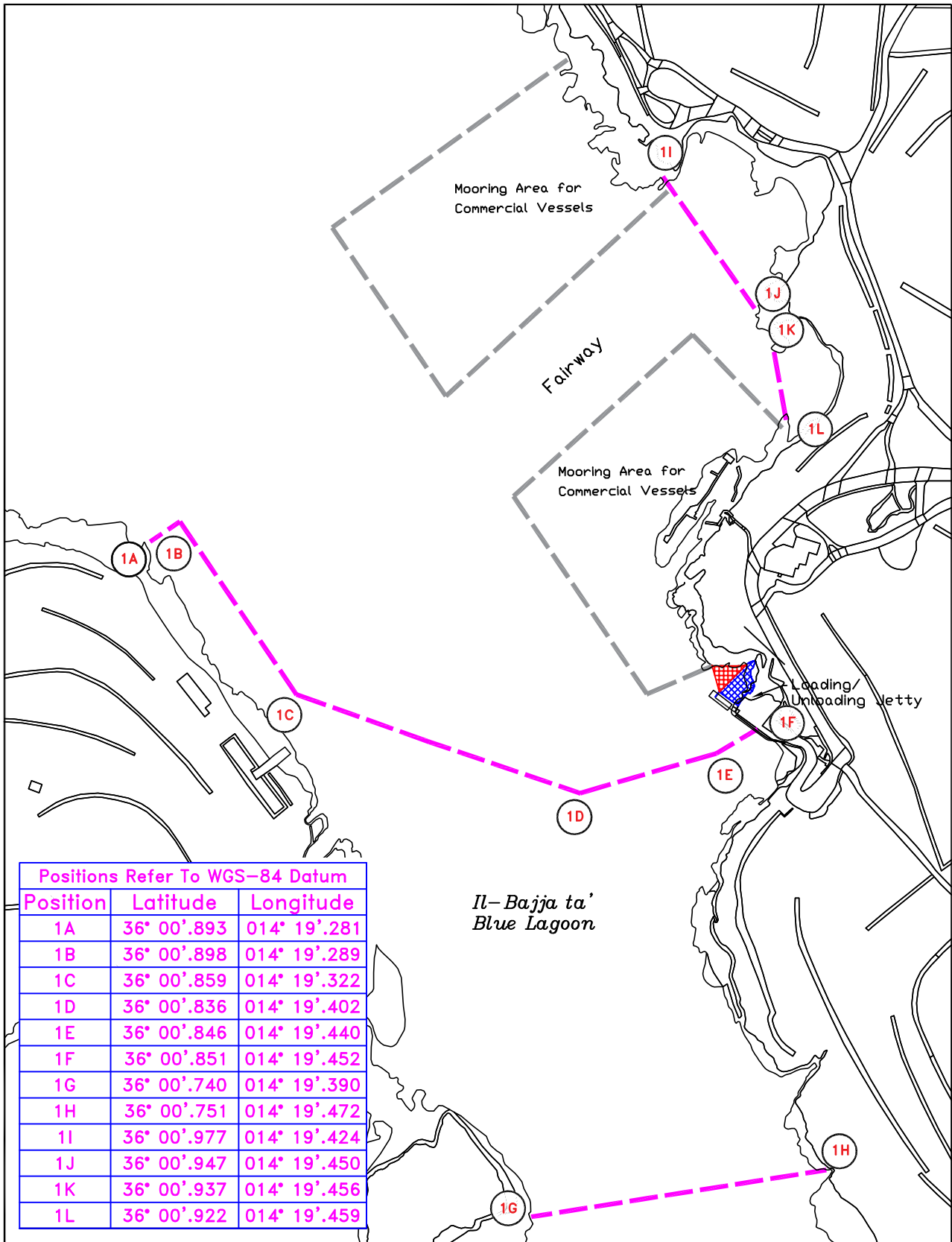
DISCLAIMER

Whilst the Ports and Yachting Directorate, Transport Malta has endeavoured to ensure that the material supplied is suitable for the purpose described, it accepts no liability (to the maximum extent permitted by law) for any damage or loss of any nature arising from its use.

The material supplied is used entirely at the Recipient's own risk.



Figure 1



© Transport Malta all rights reserved

DISCLAIMER

Whilst the Ports and Yachting Directorate, Transport Malta has endeavoured to ensure that the material supplied is suitable for the purpose described, it accepts no liability (to the maximum extent permitted by law) for any damage or loss of any nature arising from its use.

The material supplied is used entirely at the Recipient's own risk.



Figure 1