



PORTS AND YACHTING DIRECTORATE

LOCAL NOTICE TO MARINERS N° 052 of 2026

Our Ref: **TM/PYD/132/89**

2 April 2026



Transport Malta

Malta Transport Centre,
Triq Pantar, Hal Lija, LJA 2021
Malta

Tel: (356) 2122 2203
Fax: (356) 2125 0365
Email: info.tm@transport.gov.mt

www.transport.gov.mt

Filming at different localities - Walking with Dinosaurs Special

The Ports and Yachting Directorate, Transport Malta notifies all mariners, owners of vessels and divers, that filming activities will take place at different localities.

Filming will take place on between Friday 10th April 2026 and Monday 18th April 2026, at the locations and times as follow:

Filming will be carried out at any of the location between 0600 hours and 1900 hours

Ir-Ramla tac-Cirkewwa

From the point A, as shown on the attached chart A.

Off Ix-Xatt L-Ahmar - Gozo

From the point B, as shown on the attached chart B.

Off Santa Marija Cave - Comino

From the point C, as shown on the attached chart C.

Il-Matz - Comino

From the point D, as shown on the attached chart D.

Between Malta and Filfla

From the point E, as shown on the attached chart E.



Transport Malta

Position	LATITUDE (N)	LONGITUDE (E)
A	35° 59'.065	014° 19'.598
B	36° 00'.961	014° 17'.120
C	36° 01'.044	014° 20'.559
D	36° 00'.490	014° 19'.660
E	35° 47'.659	014° 27'.049

During these days and times, for filming purposes, vessels transiting the areas, 500m from the indicated positions on the attached charts, shall, except in the case of emergency, not drop anchor and no loitering is allowed, they are to remain underway.

All mariners, owners of vessels and divers are advised that entry into the areas is to be avoided on the above-mentioned dates and time.

Mariners are advised to navigate with caution at slow speed (No Wake) and give a wide berth when in the vicinity. They are also to keep out of the above-mentioned area and to comply with instructions and directions issued on VHF channel 12 and/or 16 by Valletta VTS and by any Enforcement Officers on site.

BA Chart: **211, 2538**

© British Crown Copyright 1970, 1983, 1986, 1988, 1999, 2000
All rights reserved.

The UK Hydrographic Office makes the accompanying data
Available to Malta Maritime Authority (Transport, Malta)
Under the terms and conditions of agreement HO 1427/020930/01.

DISCLAIMER

Whilst the UK Hydrographic Office has endeavoured to ensure
That the material supplied is suitable for the purpose described,
it accepts no liability (to the maximum extent permitted by law)
For any damage or loss of any nature arising from its use.
The material supplied is used entirely at the Recipient's own risk.

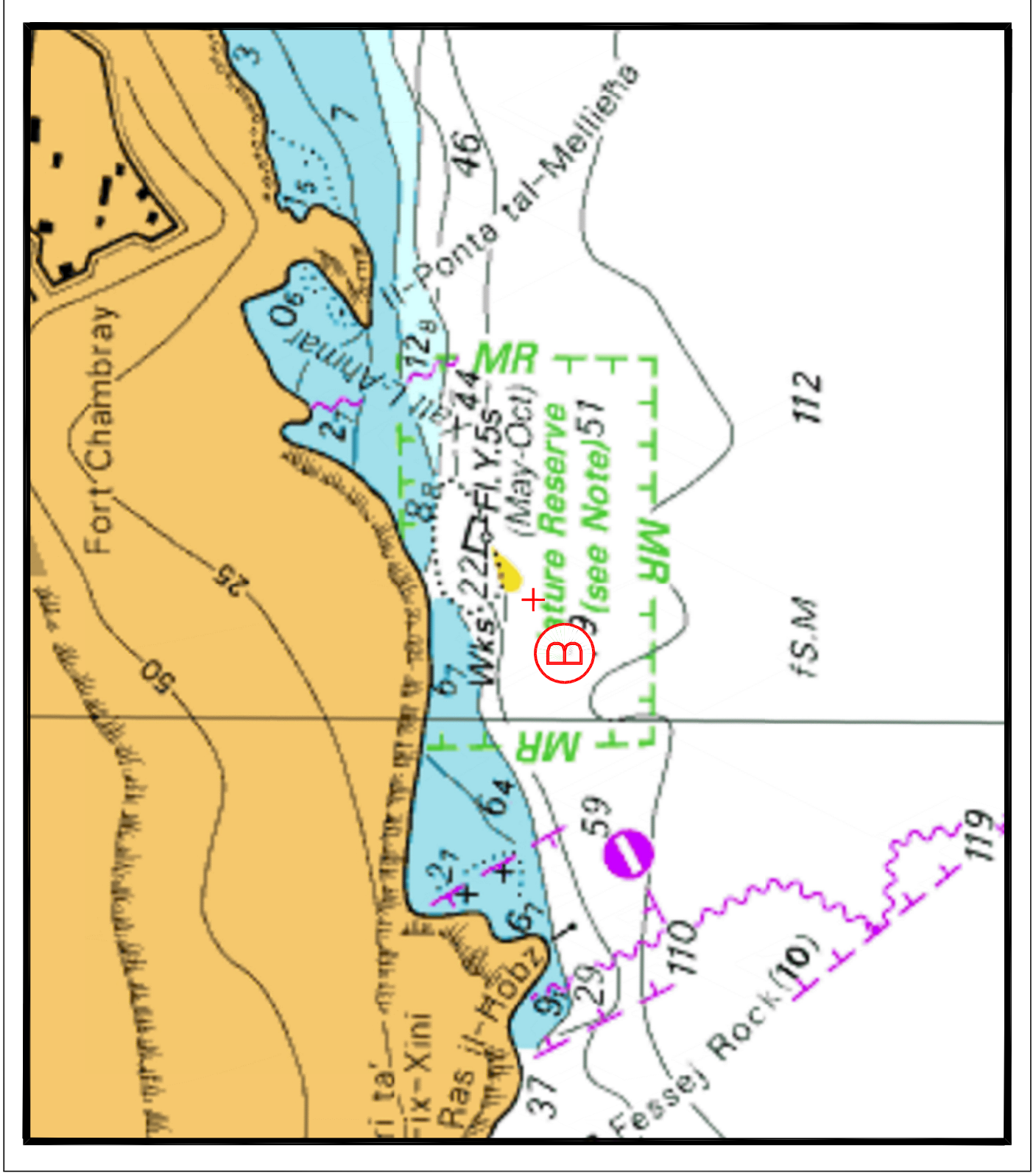


Chart B

DISCLAIMER

Whilst the UK Hydrographic Office has endeavoured to ensure
That the material supplied is suitable for the purpose described,
It accepts no liability (to the maximum extent permitted by law)
For any damage or loss of any nature arising from its use.
The material supplied is used entirely at the Recipient's own risk.

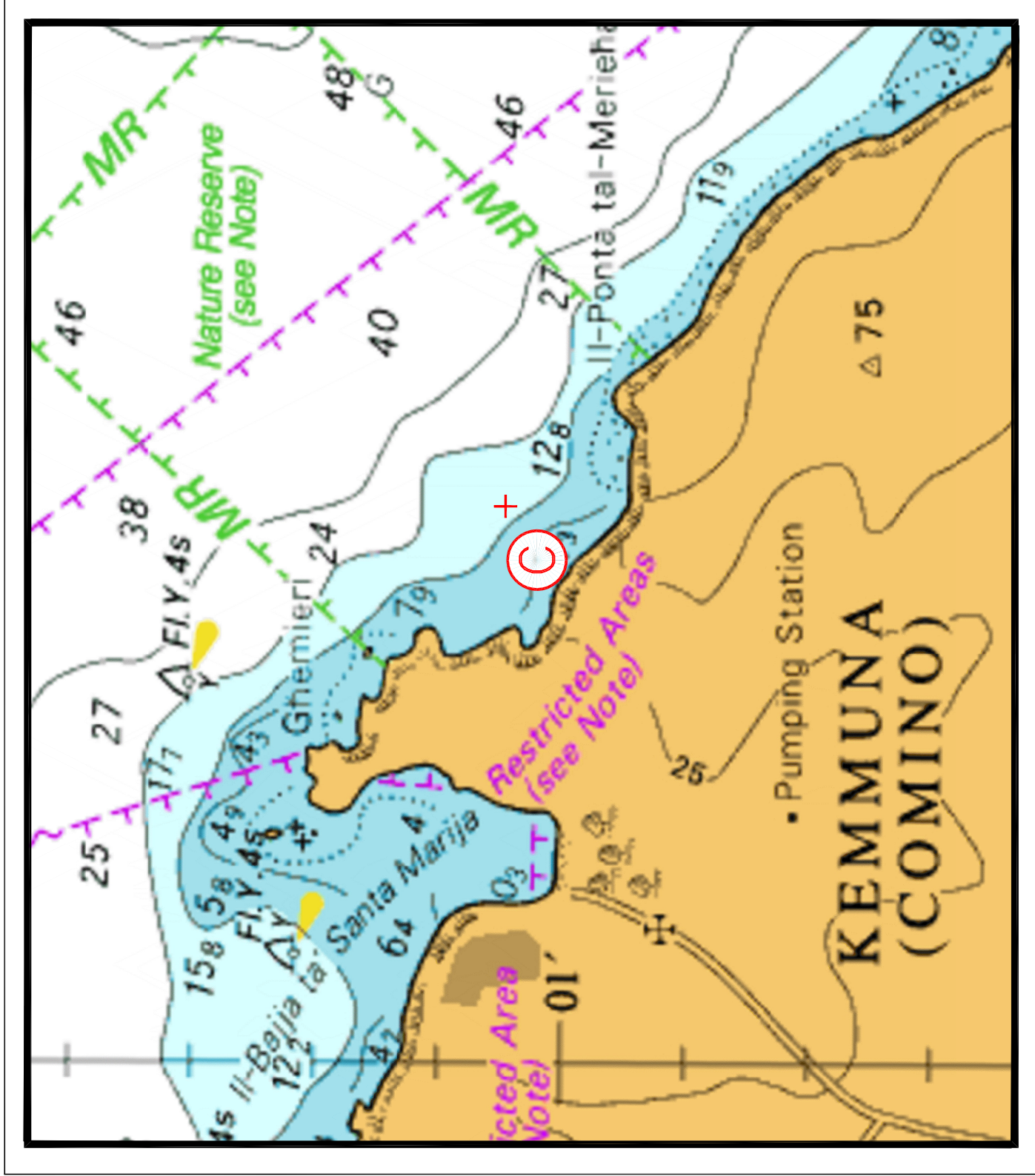


Chart C

