



PORTS AND YACHTING DIRECTORATE

LOCAL NOTICE TO MARINERS No 045 of 2026

Our Ref: TM/PYD/63/95

27 March 2026



Transport Malta

Malta Transport Centre,
Triq Pantar, Hal Lija, LJA 2021
Malta

Tel: (356) 2122 2203
Fax: (356) 2125 0365
Email: info.tm@transport.gov.mt

www.transport.gov.mt

Establishment of an Organised Mooring Area in Bugibba – Il-Bajja ta' San Pawl

The Ports and Yachting Directorate, Transport Malta notifies all mariners that works will be carried out in Bugibba – Il- Bajja ta' San Pawl to establish an Organised Mooring Area and associated fairway for the mooring of small craft.

Owners of vessels that are moored or have a mooring within the area bounded by the imaginary line A, B, C, D, E, F, G, H and the coastline (as shown hatched on the attached chart) are to remove such vessels, moorings and associated tackle by not later than Monday 6th April 2026.

	LATITUDE (N)	LONGITUDE (E)
A	35° 57'.112	14° 24'.497
B	35° 57'.088	14° 24'.463
C	35° 57'.064	14° 24'.457
D	35° 57'.052	14° 24'.449
E	35° 57'.035	14° 24'.422
F	35° 57'.031	14° 24'.386
G	35° 57'.041	14° 24'.351
H	35° 57'.005	14° 24'.386

Any vessels and moorings that are left in this area after the stipulated date will be removed at the expense of their owner. No liability whatsoever will be accepted by the Authority for any damage that may be caused while removing the said vessels and moorings.

Registered mooring holders affected by this new fairway are to be contacted by the Yachting and Mooring Department in the coming days. In addition, registered mooring holders will retain their mooring rights and shall be provided with an alternative location.

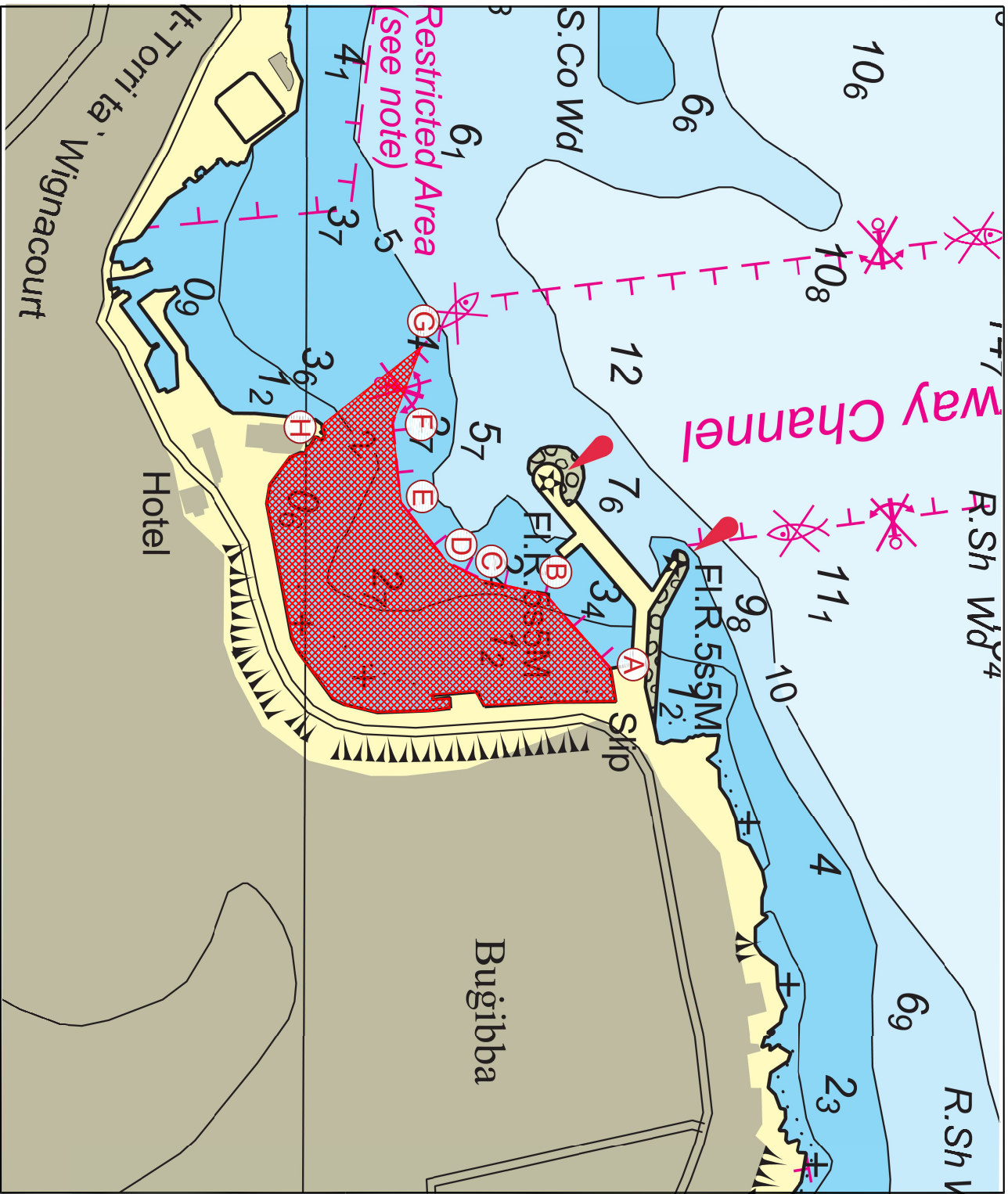
Furthermore, mariners are reminded that it is prohibited to lay any moorings and ground tackle without the prior permission of the Authority.



In view of the above, mariners navigating in the area are to navigate with caution and at a very slow 'no wake' speed. They are to give the above area a wide berth and comply with the instructions as communicated by the Valletta VTS on VHF Channel 12 and/or 16 and by the Authority's officials or other Enforcement Agencies.

Positions referred to WGS 84 DATUM.

Chart affected: **BA 211**



© Transport Malta all rights reserved

DISCLAIMER

Whilst the Ports and Yachting Directorate, Transport Malta has endeavoured to ensure that the material supplied is suitable for the purpose described, it accepts no liability (to the maximum extent permitted by law) for any damage or loss of any nature arising from its use.

The material supplied is used entirely at the Recipient's own risk.