



PORTS AND YACHTING DIRECTORATE

## LOCAL NOTICE TO MARINERS N° 039 of 2026

Our Ref: TM/PYD/0001/26

20 March 2026



Transport Malta

Malta Transport Centre,  
Triq Pantar, Hal Lija, LJA 2021  
Malta

Tel: (356) 2122 2203  
Fax: (356) 2125 0365  
Email: [info.tm@transport.gov.mt](mailto:info.tm@transport.gov.mt)

[www.transport.gov.mt](http://www.transport.gov.mt)

### Fairway Established in Marsamxett Harbour - Sliema Ferries

The Ports and Yachting Directorate, Transport Malta, notifies mariners and owners of vessels that a fairway within Marsamxett Harbour (Sliema Ferries area) has been established as indicated on the attached chart.

The fairway is delineated by the points, as shown on the attached chart.

Points	Latitude (N)	Longitude (E)	
A	35° 55'.290	14° 30'.732	Fairway
B	35° 54'.421	14° 30'.359	
C	35° 54'.476	14° 30'.350	
D	35° 54'.490	14° 30'.367	Coast
E	35° 54'.524	14° 30'.298	Coast
F	35° 54'.424	14° 30'.233	
G	35° 54'.403	14° 30'.305	
H	35° 54'.262	14° 30'.716	Fairway

No vessels are permitted to anchor or moor within the newly established fairway.

Registered mooring holders affected by this new fairway are to be contacted by the Yachting and Mooring Department in the coming days.

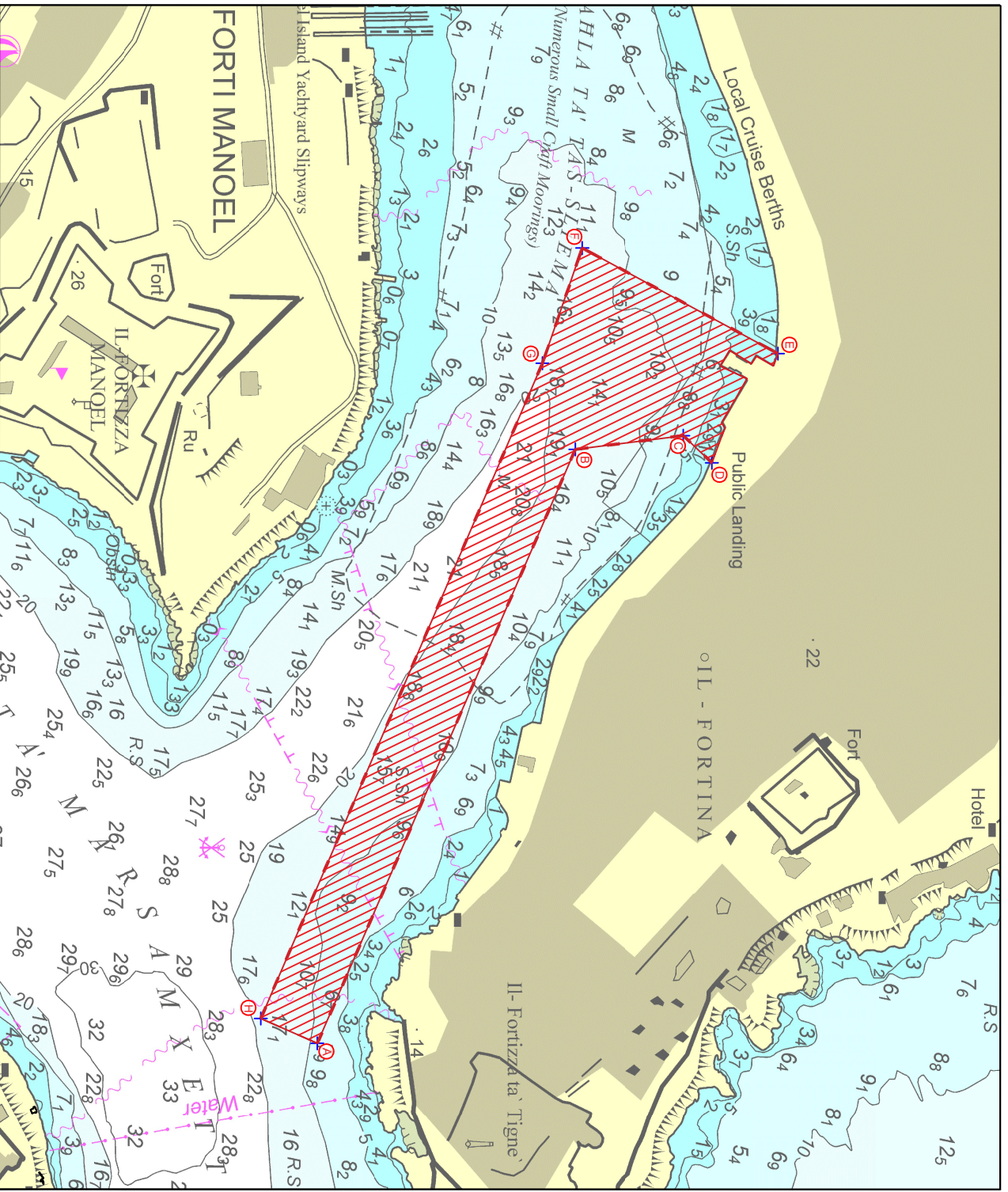
The moorings (and their ground tackle) within the fairway are to be removed by their owner without delay in the interest of safety of navigation. Any moorings and ground tackle that are left in the fairway, will be removed at the expense of their owner. The Authority will accept no liability whatsoever for any damage that may be caused while removing the said vessels and moorings.



Furthermore, mariners are reminded that it is prohibited to lay any moorings and ground tackle without the prior permission of the Authority.

All positions are referred to WGS 84 DATUM.

Chart Affected:     **BA 177**



© Transport Malta all rights reserved

**DISCLAIMER**

Whilst the Ports and Yachting Directorate, Transport Malta has endeavoured to ensure that the material supplied is suitable for the purpose described, it accepts no liability (to the maximum extent permitted by law) for any damage or loss of any nature arising from its use.  
The material supplied is used entirely at the Recipient's own risk.