



PORTS AND YACHTING DIRECTORATE

## LOCAL NOTICE TO MARINERS No 034 of 2026

Our Ref: **TM/PYD/70/02**

12 March 2026



**Transport Malta**

Malta Transport Centre,  
Triq Pantar, Hal Lija, LJA 2021  
Malta

Tel: (356) 2122 2203  
Fax: (356) 2125 0365  
Email: [info.tm@transport.gov.mt](mailto:info.tm@transport.gov.mt)

[www.transport.gov.mt](http://www.transport.gov.mt)

### **Underwater Survey at Il- Ponta ta' L-Imgerbeb – Grand Harbour**

The Ports and Yachting Directorate, Transport Malta, notifies mariners that a survey at il- Ponta ta' L-Imgerbeb – Grand Harbour, will be carried out with the use of a Remotely Operated Vehicle (ROV) and by scuba divers. This survey will be carried out by the vessel “Undaunted” and her ancillary equipment.

Weather permitting, the underwater survey is planned to be carried out between Monday 23<sup>rd</sup> March 2026 and Saturday 4<sup>th</sup> April 2026, within the area A, B, C, D and E as shown on the attached chart.

The international Code of Signals flag ‘A’ will be displayed onboard the support vessel when scuba divers are in the water.

Since the vessel “Undaunted” will be deploying a tethered ROV, she will be restricted in her ability to manoeuvre and will be displaying the appropriate signals in compliance with the International Regulations for the Prevention of Collisions at Sea.

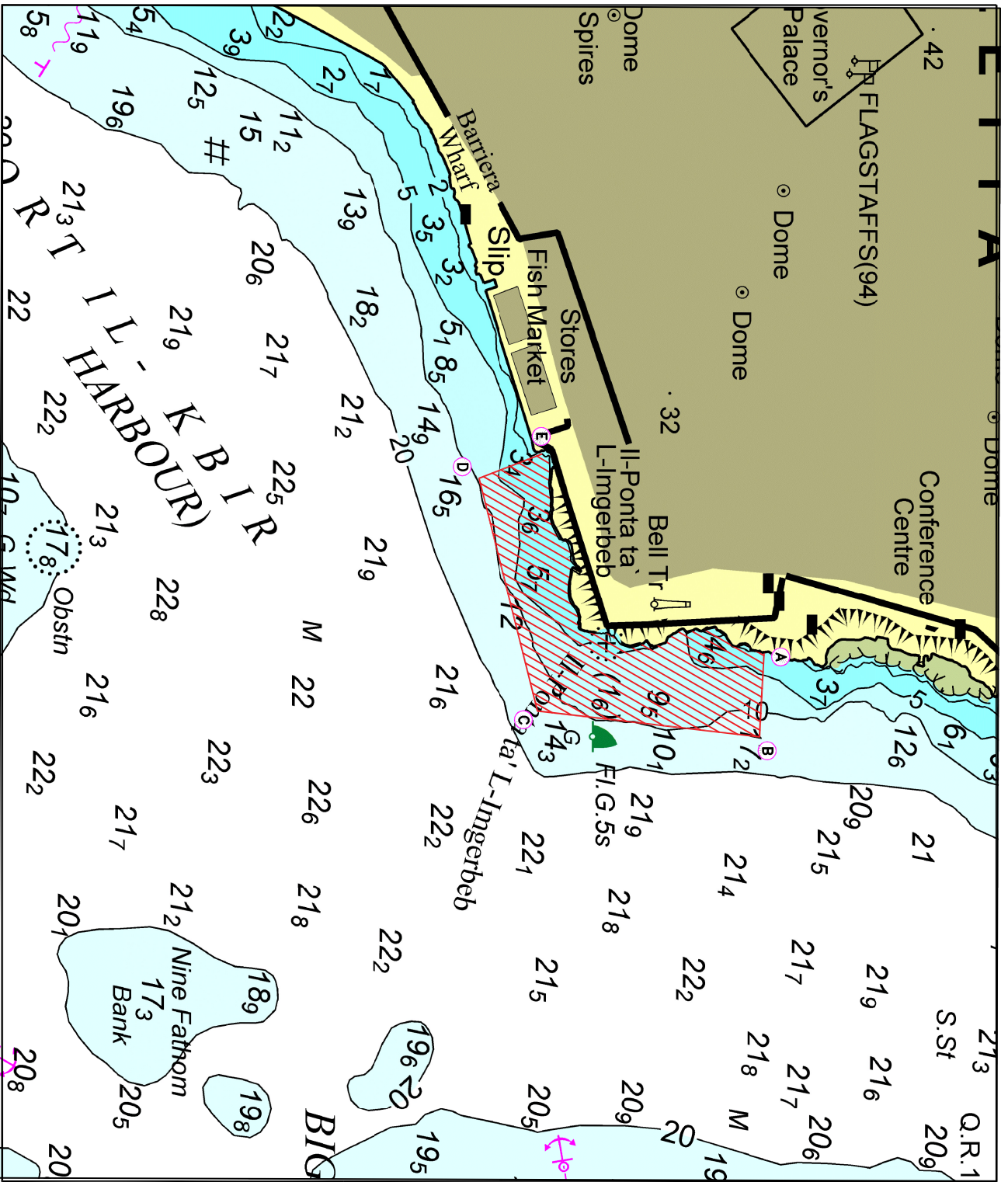
A safety zone of 50m around the survey area and the support vessel is to be kept during the survey.

Mariners and operators of vessels are advised to keep a sharp lookout, proceed with caution and at slow speed when navigating in the vicinity of the above-mentioned area.

Mariners are also notified to abide by any instructions issued by Valletta Port Control (Valletta VTS) on VHF Channel 12.

Positions are in WGS84

Charts Affected: **BA 177**



© Transport Malta all rights reserved

**DISCLAIMER**

Whilst the Ports and Yachting Directorate, Transport Malta has endeavoured to ensure that the material supplied is suitable for the purpose described, it accepts no liability (to the maximum extent permitted by law) for any damage or loss of any nature arising from its use.

The material supplied is used entirely at the Recipient's own risk.