



PORTS AND YACHTING DIRECTORATE

LOCAL NOTICE TO MARINERS N° 030 of 2026

Our Ref: **TM/PYD/0001/26**

9th March 2026



Transport Malta

Malta Transport Centre,
Triq Pantar, Hal Lija, LJA 2021
Malta

Tel: (356) 2122 2203
Fax: (356) 2125 0365
Email: info.tm@transport.gov.mt

www.transport.gov.mt

Hazard To Navigation in Marsamxett Harbour

Reference is made to BA Chart 177 – Valletta Harbours

The Ports and Yachting Directorate, Transport Malta, notifies mariners that a submersible obstruction has been detected in Il-Port ta' Marsamxett in position:

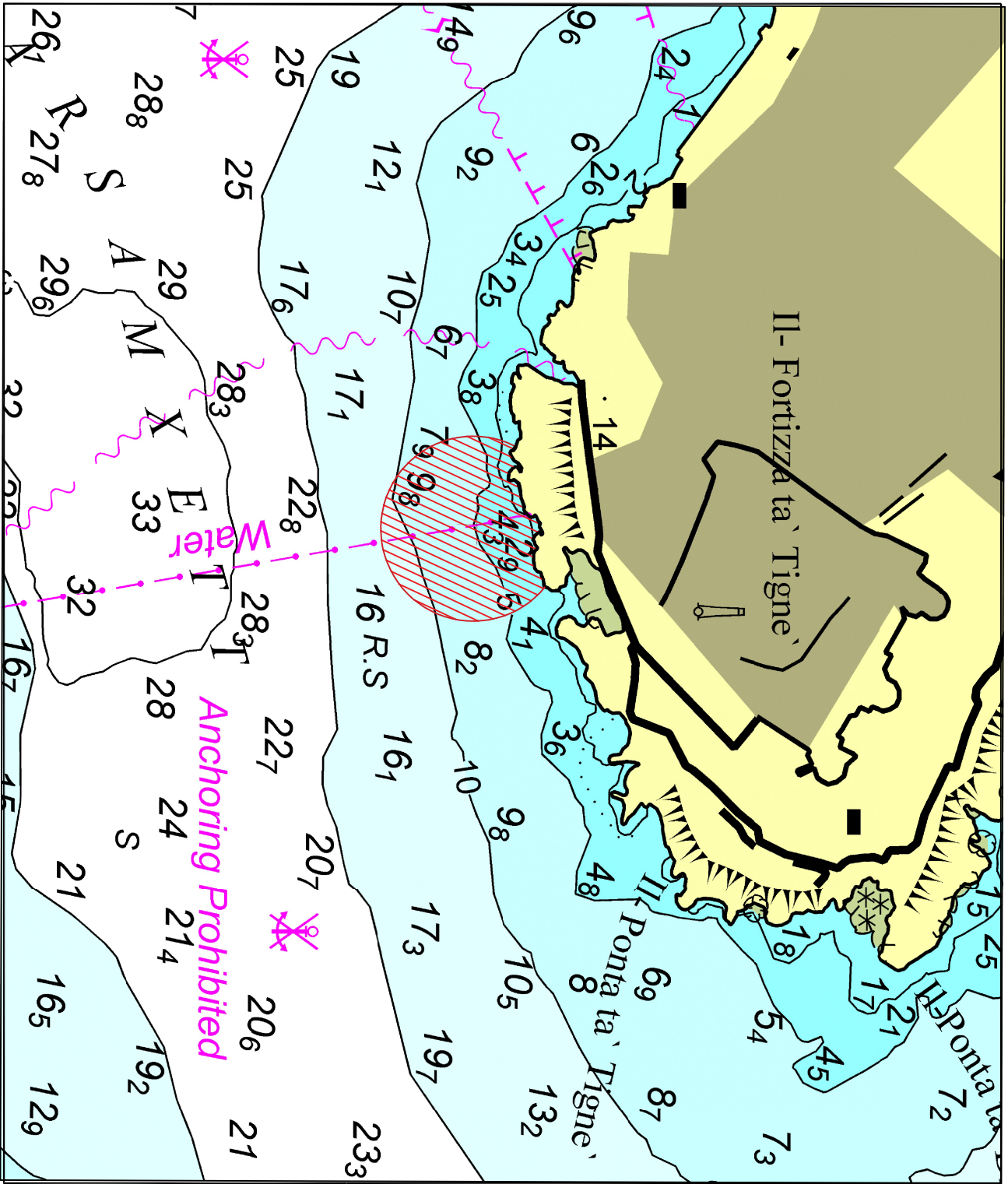
Latitude (N)	Longitude (E)
35° 54'.307	014° 30'.770

The obstruction is part of the submersible water pipeline that runs from Tigne Point to Valletta and is approximately 28 meters off the nearest coast (see attached chart).

Navigation between the coast (Tigne Point) and the given coordinate is strictly prohibited.

Whilst every effort is being made to rectify as soon as possible, mariners are to give a wide berth, navigate with caution and keep a sharp lookout when navigating in the vicinity of the about mentioned coordinates.

Chart affected **BA 177**



© Transport Malta all rights reserved

DISCLAIMER

Whilst the Ports and Yachting Directorate, Transport Malta has endeavoured to ensure that the material supplied is suitable for the purpose described, it accepts no liability (to the maximum extent permitted by law) for any damage or loss of any nature arising from its use.
The material supplied is used entirely at the Recipient's own risk.