



PORTS AND YACHTING DIRECTORATE

## LOCAL NOTICE TO MARINERS N° 022 of 2026

Our Ref: **TM/PYD/132/89**

25 February 2026



**Transport Malta**

Malta Transport Centre,  
Triq Pantar, Hal Lija, LJA 2021  
Malta

Tel: (356) 2122 2203  
Fax: (356) 2125 0365  
Email: [info.tm@transport.gov.mt](mailto:info.tm@transport.gov.mt)

[www.transport.gov.mt](http://www.transport.gov.mt)

### **Filming from different localities - VLM**

The Ports and Yachting Directorate, Transport Malta, notifies all mariners and sea vessel operators that filming activities will take place at different localities.

Filming will take place on the listed dates and times at each of the following locations.

#### **Ir- Ramla ta` Ghajn Tuffieha**

Filming is scheduled to be carried out on Wednesday 11<sup>th</sup> March 2026 from Ir-Ramla ta Ghajn Tuffieha, from 0600 hours till 2000 hours, as shown on the attached Chart A.

#### **Migra I-Ferha (Rabat)**

Filming is scheduled to be carried out at sea (limits of Migra I- Ferha) on Wednesday 11<sup>th</sup> March 2026, from 0600 hours till 2000 hours, as shown on the attached Chart B.

#### **Barriera Wharf - Fish Market, Valletta**

Filming is scheduled to be carried out on Monday 16<sup>th</sup> March 2026, from 0600 hours till 2000 hours, as shown on the attached Chart C.

If, due to unfavourable weather conditions, the filming cannot be held in any of the above-mentioned localities, the filming will be held on any day between Wednesday 11<sup>th</sup> March and Wednesday 18<sup>th</sup> March 2026, at the same times, in either one of the above-mentioned localities.

No loitering is being requested. Consequently, Masters and operators of vessels transiting these areas shall not moor or drop anchor and must remain underway.



Mariners navigating in the vicinity of the indicated area on the mentioned dates and times are to keep watch on VHF Channel **12 / 16** and are to cooperate with the filming crew and/or any enforcement officers in the area.

Any instructions issued on VHF channel **12 / 16** by Valletta VTS are to be complied with.

Charts affected: **BA 177, 194, 2537, 2538**

© Transport Malta all rights reserved

**DISCLAIMER**

Whilst the Ports and Yachting Directorate, Transport Malta has endeavoured to ensure that the material supplied is suitable for the purpose described, it accepts no liability (to the maximum extent permitted by law) for any damage or loss of any nature arising from its use.  
The material supplied is used entirely at the Recipient's own risk.

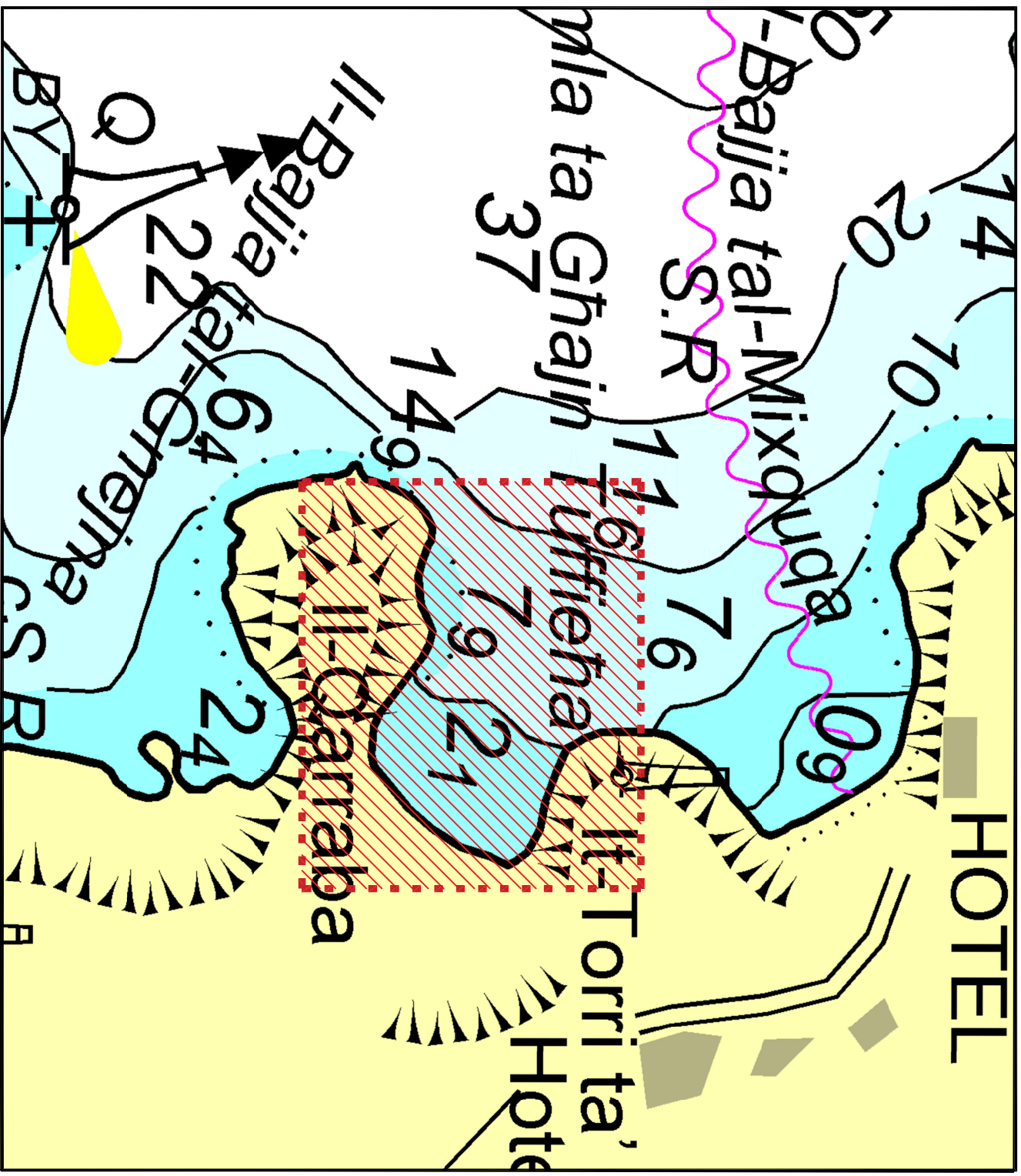


Chart A

© Transport Malta all rights reserved

DISCLAIMER

Whilst the Ports and Yachting Directorate, Transport Malta has endeavoured to ensure that the material supplied is suitable for the purpose described, it accepts no liability (to the maximum extent permitted by law) for any damage or loss of any nature arising from its use.  
The material supplied is used entirely at the Recipient's own risk.

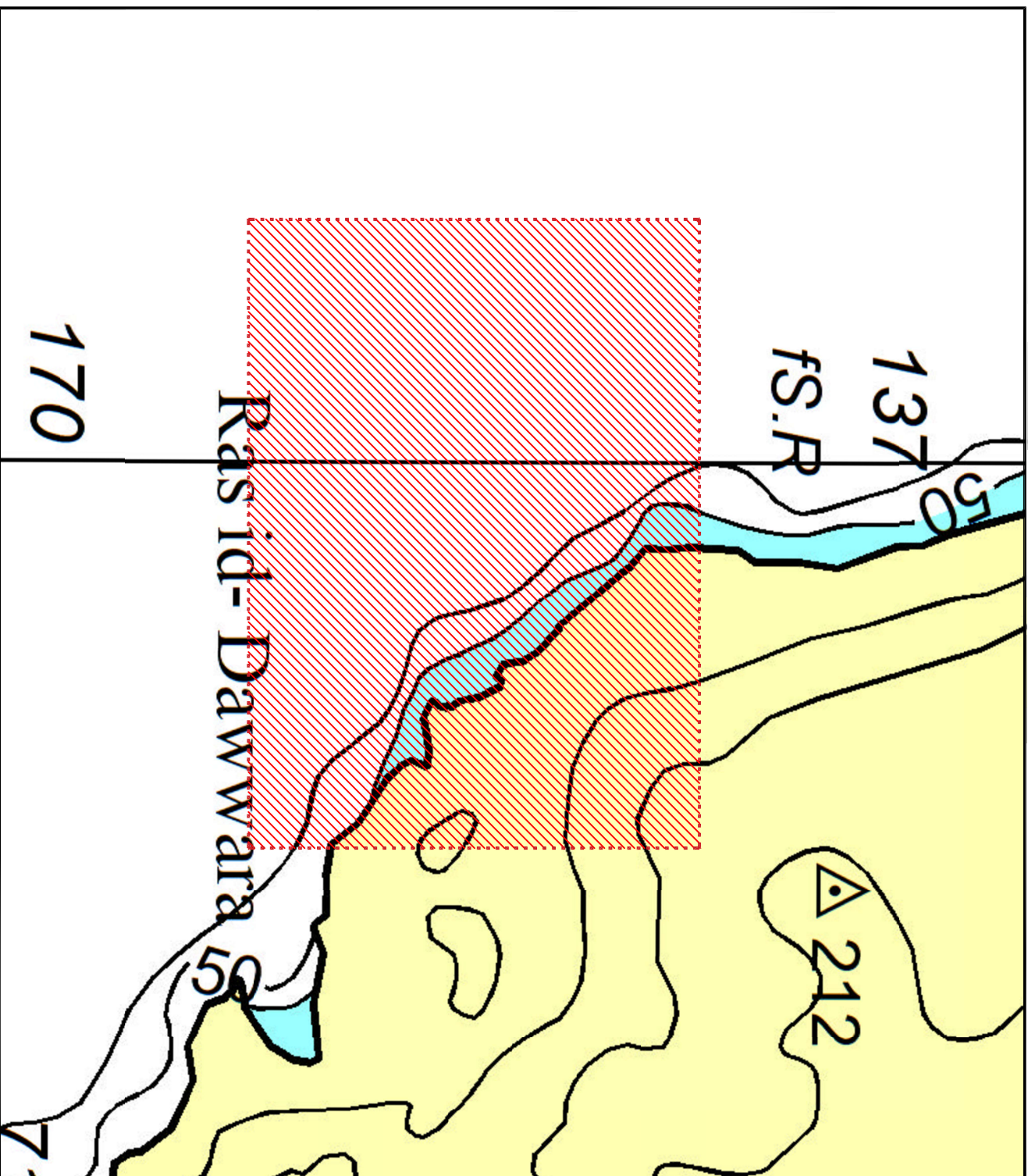
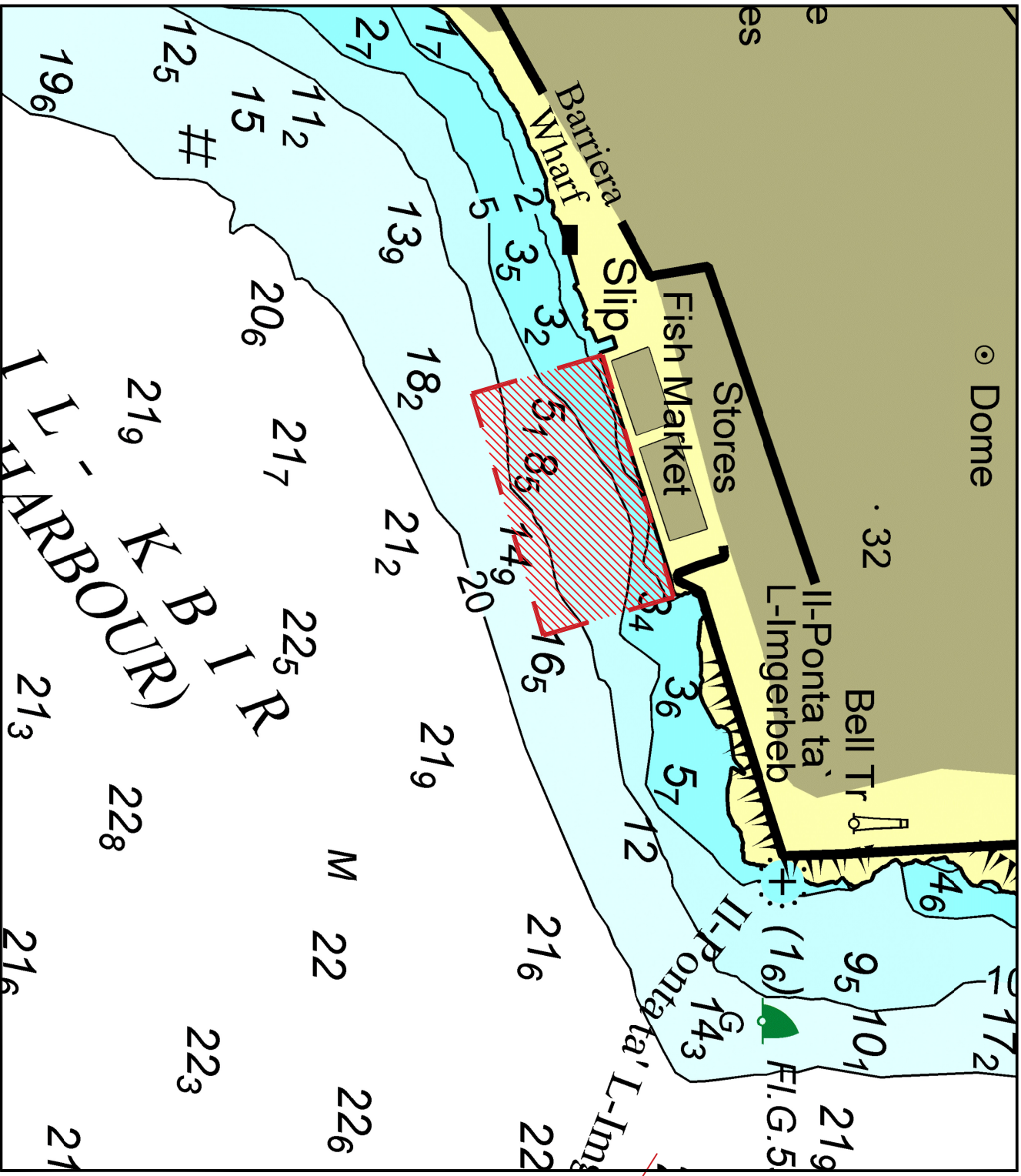


Chart B



© Transport Malta all rights reserved

**DISCLAIMER**

Whilst the Ports and Yachting Directorate, Transport Malta has endeavoured to ensure that the material supplied is suitable for the purpose described, it accepts no liability (to the maximum extent permitted by law) for any damage or loss of any nature arising from its use. The material supplied is used entirely at the Recipient's own risk.

Chart C