



PORTS AND YACHTING DIRECTORATE

Transport Malta

LOCAL NOTICE TO MARINERS No 006 of 2020

Our Ref: **TM/PYD/ 92/09**

Malta Transport Centre
Marsa, MRS 1917
Malta

Tel: (356) 2122 2203
Fax: (356) 2125 0365
Email: info.tm@transport.gov.mt

10 January 2020

www.transport.gov.mt

Entry Restriction in St. George's Bay – St. Julian's

The Ports and Yachting Directorate, Transport Malta notifies mariners that with immediate effect a restricted area for commercial vessels of twelve (12) metres in length overall and over, is being established in St. George's Bay, St. Julian's.

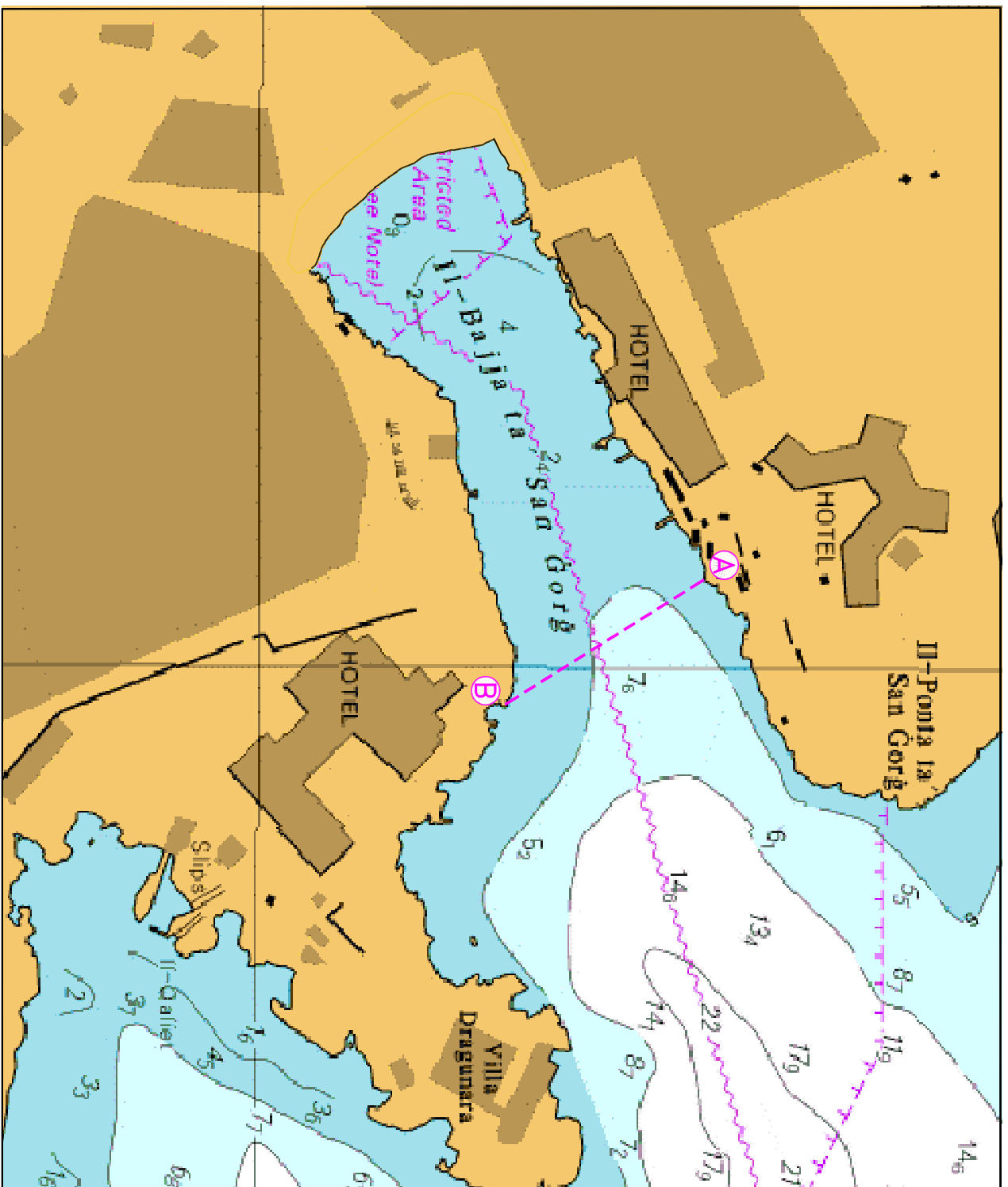
The restricted area is delineated by the imaginary line A to B, on the shore either side of the bay (as shown on attached chart) and the sea area South West of the line.

	LATITUDE (N)	LONGITUDE (E)
A	35° 55'.666	014° 29'.461
B	35° 55'.593	014° 29'.518

Operators of commercial vessels of twelve (12) metres in length overall and over, are to anchor outside the imaginary line AB and safely disembark any passengers by using duly authorized smaller vessels.

Local Notice to Mariners No. 09 of 2016 of Transport Malta is hereby **CANCELLED**.

Chart Affected: **BA 177**



© British Crown Copyright 1970, 1983, 1986, 1988, 1999, 2000
All rights reserved.

The UK Hydrographic Office makes the accompanying data
Available to Malta Maritime Authority (Transport Malta)
Under the terms and conditions of agreement HO 1427/020930/01.

DISCLAIMER

Whilst the UK Hydrographic Office has endeavoured to ensure
That the material supplied is suitable for the purpose described,
It accepts no liability (to the maximum extent permitted by law)
For any damage or loss of any nature arising from its use.
The material supplied is used entirely at the Recipient's own risk.