



PORTS AND YACHTING DIRECTORATE

NOTICE TO MARINERS No 24 of 2026

Our Ref: **TM/PYD/70/02**

23 March 2026



Transport Malta

Malta Transport Centre,
Triq Pantar, Hal Lija, LJA 2021
Malta

Tel: (356) 2122 2203
Fax: (356) 2125 0365
Email: info.tm@transport.gov.mt

www.transport.gov.mt

PAGES - Oceanographic Investigative surveys between Malta and Sicily

The Ports and Yachting Directorate, Transport Malta, notifies mariners that Oceanographic Investigative surveys will be carried out between Malta and Sicily.

These investigative surveys will be carried out by the vessel “*RV Gaia Blu*” and her ancillary equipment.

Weather permitting, the survey is planned to commence on Friday 10th April 2026 and is expected to be completed by Monday 27th April 2026.

The investigative surveys will be held within the area formed by joining the points A, B, C, D, E, F, G, and H, as shown on the attached chart.

Point	Latitude (N)	Longitude (E)
A	36° 29'.329	013° 29'.960
B	35° 09'.217	014° 00'.000
C	35° 09'.217	017° 19'.975
D	35° 51'.103	015° 44'.629
E	35° 56'.603	015° 34'.093
F	36° 16'.718	014° 47'.846
G	36° 26'.029	014° 22'.960
H	36° 33'.128	013° 54'.660

Since the vessel will be towing different types of equipment and may at times be stationary, she will be restricted in her ability to manoeuvre.

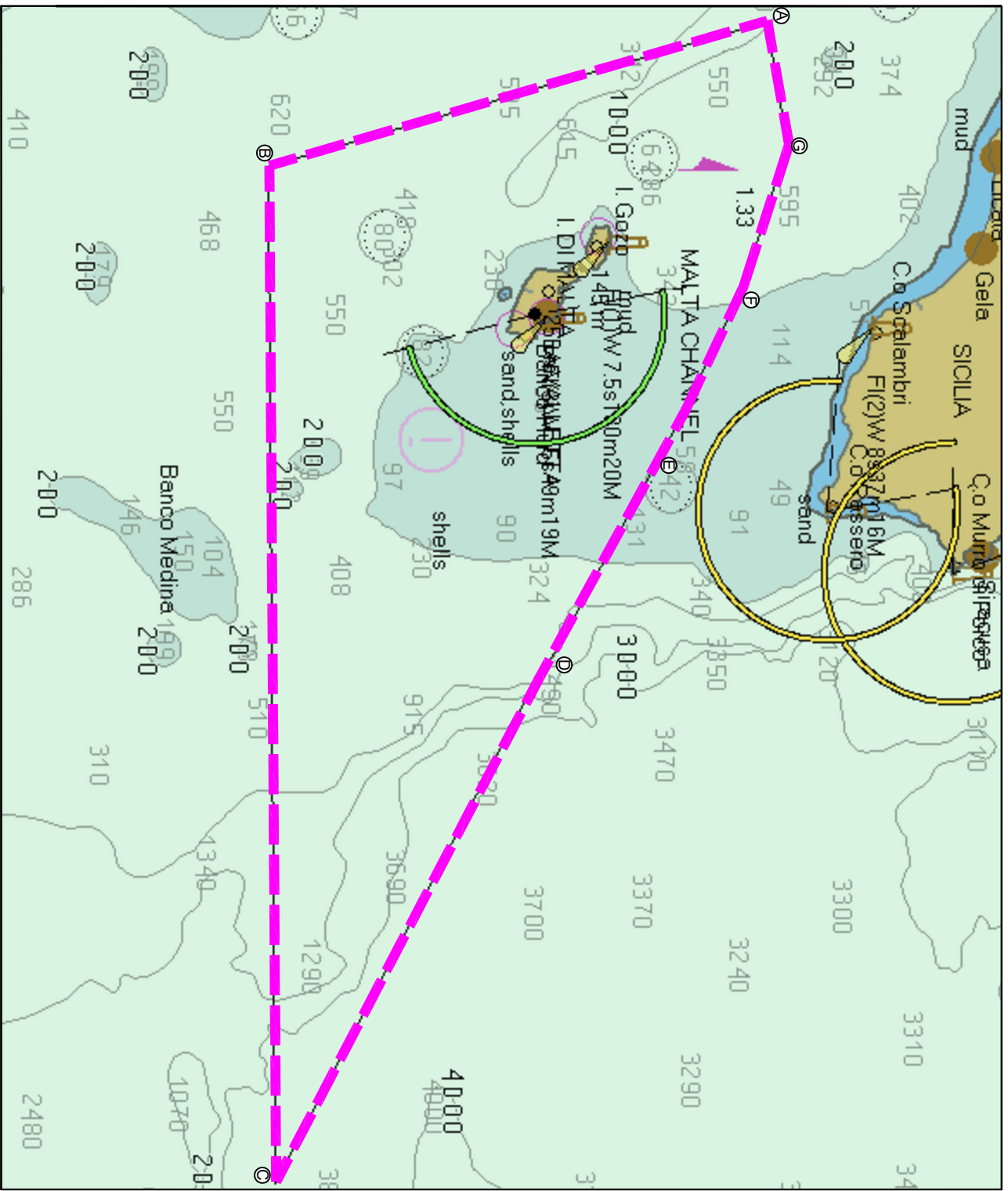
Appropriate signals in accordance with the Regulations for the Prevention of Collisions at sea (COLREGS) and the International Code of Signals, will be exhibited accordingly.



Mariners are instructed to navigate with caution and to maintain a safe distance of 0.75 Nautical Miles from the vessel *“RV Gaia Blu”* when it is detected or sighted.

All vessels are to comply with any instructions given on Channel VHF 16.

Charts Affected: **BA 2123, 2124, 2537, 2538**



© Transport Malta all rights reserved

DISCLAIMER

Whilst the Ports and Yachting Directorate, Transport Malta has endeavoured to ensure that the material supplied is suitable for the purpose described, it accepts no liability (to the maximum extent permitted by law) for any damage or loss of any nature arising from its use.
The material supplied is used entirely at the Recipient's own risk.