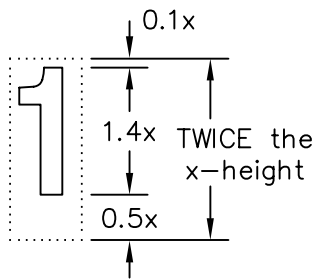
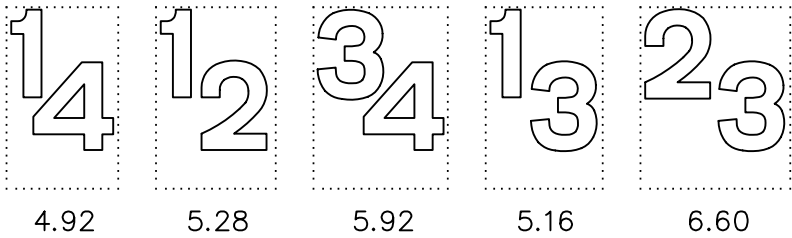
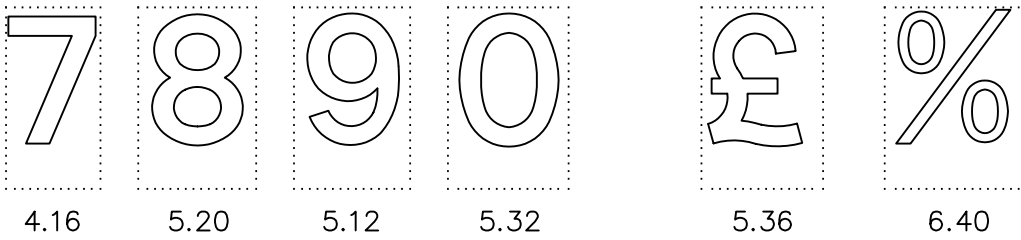
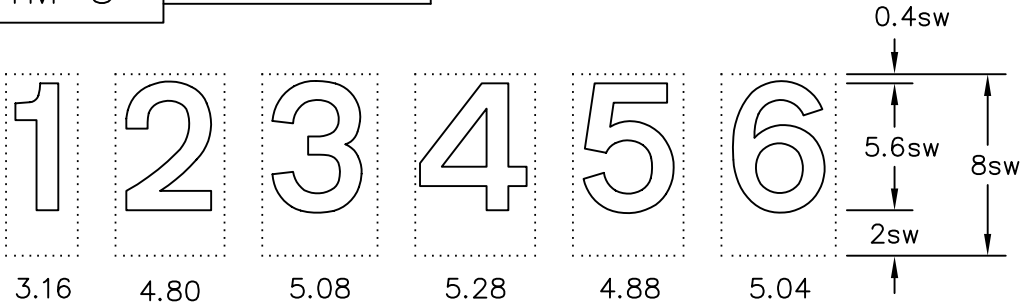


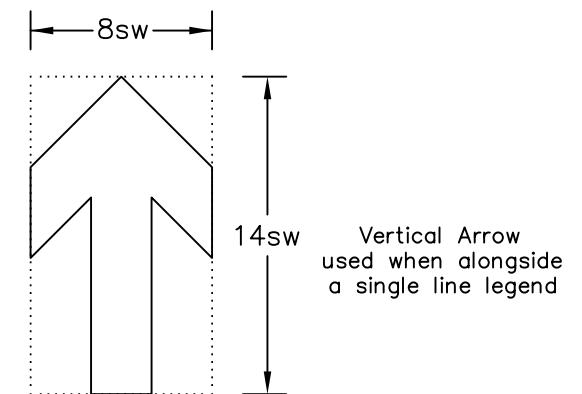
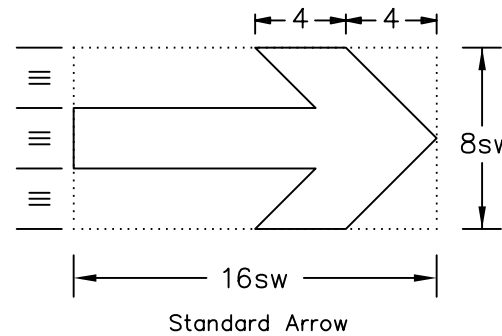
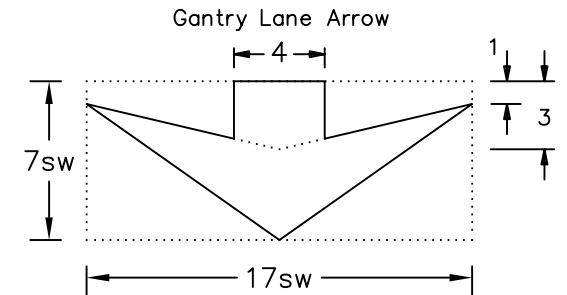
Drawing No.  
TM 3

Related Drawing  
TM 1 & TM 2

© CROWN COPYRIGHT



- NOTES:
1. The numerals shown are from the Transport MEDIUM alphabet.
  2. The numerals are placed on tiles for the purpose of spacing. The tile widths and height are given.
  3. Dimensions are given in stroke widths (sw). 1sw is one quarter of the height of the lower case 'x' (see drawing TM 2). Alphabet sizes are given in x-heights. (4sw = x-height)
  4. COLOUR: WHITE or YELLOW (route nos.)
  5. See drawings TM 1 for upper case letters, TM 2 for lower case letters.



TM3

Department for  
**Transport**

Title: Alphabets for traffic signs  
TRANSPORT MEDIUM  
Numerals and Arrows

Issue: Date: Drawn by:  
A: 14.7.94 S.P.  
B: 8.12.03 Approved by:  
C: R.M.

Dimensions:  
STROKE WIDTHS

Drawing No.  
TM 3