



PORTS AND YACHTING DIRECTORATE

LOCAL NOTICE TO MARINERS N° 191 of 2023

Our Ref: **TM/PYD/220/94 Vol II**

9 October 2023



Transport Malta

Malta Transport Centre,
Triq Pantar, Hal Lija, LJA 2021
Malta

Tel: (356) 2122 2203
Fax: (356) 2125 0365
Email: info.tm@transport.gov.mt

www.transport.gov.mt

Rolex Middle Sea Race - 2023

The Ports and Yachting Directorate, Transport Malta, notifies that the Royal Malta Yacht Club will be holding the Rolex Middle Sea Race on Saturday 21st October 2023. In addition, a coastal race will also be held on Wednesday 18th October 2023.

The race programme is as follows:

a. Wednesday, 18th October 2023

The coastal race starts at 1000 hours.

The start and finish line will be at the entrance of Marsamxett Harbour between Tigne Point and a buoy laid in the vicinity of Fort St. Elmo. The actual racecourse will be decided on the day depending on the weather conditions.

Mariners are requested to keep away from the starting area outside Marsamxett Harbour, during the start of the coastal race between 0945 hours and 1045 hours and to keep a sharp lookout during the remaining hours on Wednesday 18th October 2023.

b. Saturday, 21st October 2023

The Rolex Middle Sea Race starts at approximately 1100 hours.

The start is at the Grand Harbour, from an imaginary line between an inflatable buoy near Saint Angelo Point and the Valletta Saluting Battery mast.

The racing yachts shall then proceed in a North Easterly direction along the fairway in the Grand Harbour to an inflatable buoy, bearing the sponsor's logo, positioned outside the Saint Elmo Breakwater. The buoy shown as 1 on the attached charts 1 and 2 will be in the following approximate position:



LATITUDE (N)	LONGITUDE (E)
35° 54'.160	014° 31'.540

A restricted zone is being established near Buoy 1, as shown in red on the attached charts.

The racing yachts shall then proceed in a North Westerly direction towards St George's shoals where a second inflatable buoy, bearing the sponsor's logo will be positioned. The buoy shown as 2 on the attached chart 2 will be in the following approximate position:

LATITUDE (N)	LONGITUDE (E)
35° 55'.650	014° 30'.070

A 200m restricted zone is being established around Buoy 2.

The racing yachts will thereafter follow the course as shown on the attached chart 2

The racing yachts shall then proceed in a North–North Easterly direction towards Sicily.

Mariners and spectators are to navigate with caution and to keep a sharp lookout when in the vicinity of the above-mentioned courses and when sighted, give the participants a wide berth.

Mariners are also to keep out of the established zone round buoy 1, shown in red on the attached charts, and at least 200m away from the inflatable buoy 2 mentioned above.

All vessels not participating in the races are to maintain a safe distance of at least 50m from all the participating vessels at all times.

The Pembroke firing ranges will be inactive during the coastal race on Wednesday 18th October 2023 and during the start of the Rolex Middle Sea Race on Saturday 21st October 2023.

Mariners are advised that on Saturday 21st October 2023 between 0900 hours and 1500 hours or such time as may be communicated on VHF channel 12 and/or 16 by Valletta VTS, if earlier, the Grand Harbour shall be closed for all traffic not directly related to the race.



Transport Malta

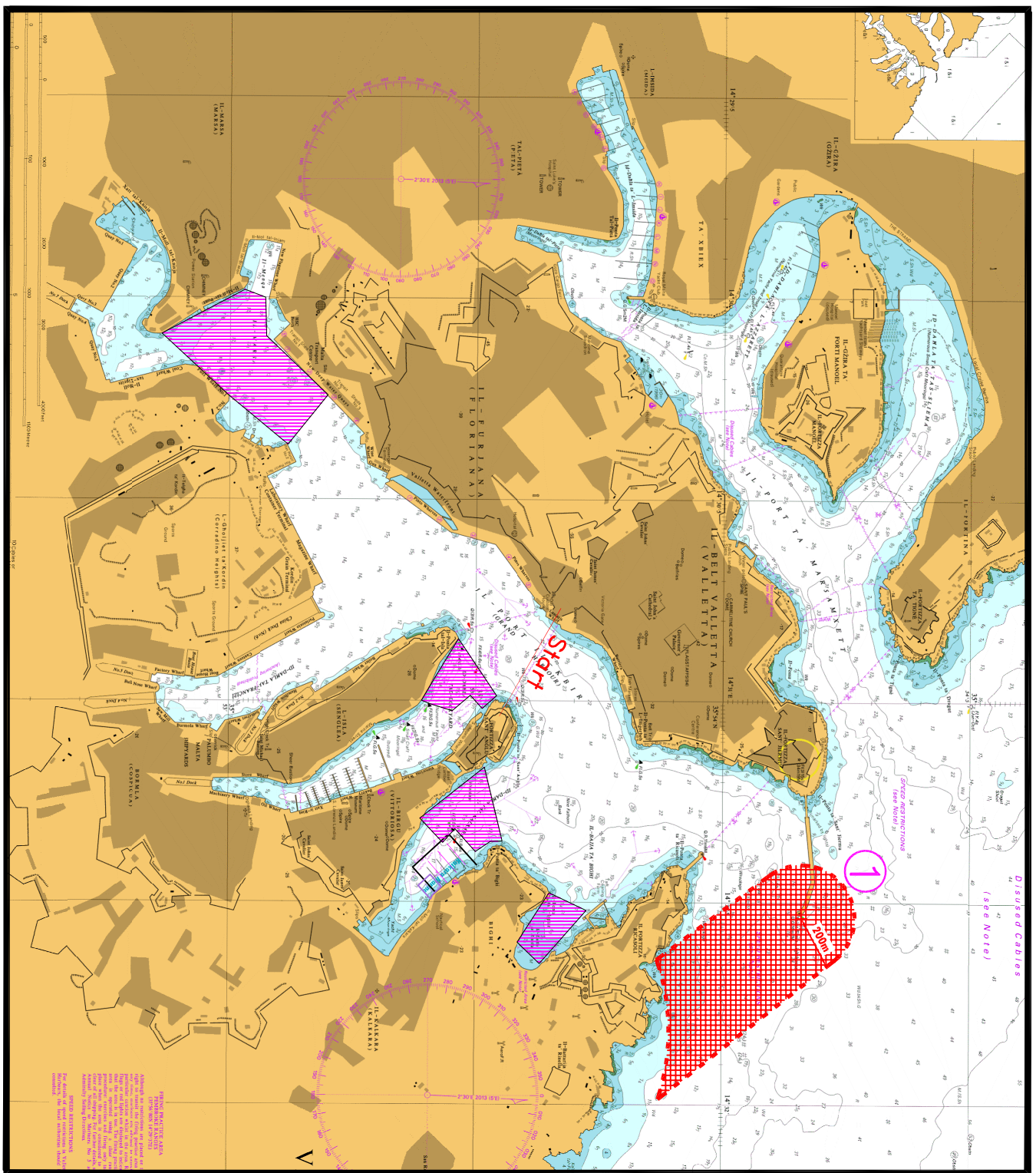
During these times all other vessels shall be required to remain within designated areas in the inner harbour up to Ras Hanzir, in Dockyard Creek, Kalkara Creek and Rinella Bay. (the areas are shown on attached chart 1).

No vessel will be allowed at the quay next to the fish market as this quay is being reserved for emergency vessels only.

Mariners are instructed to cooperate with the organizers and Maritime Enforcement officers in the area. Moreover, they are to comply with any instructions given on VHF channel 12 and /or 16 by Valletta VTS.

Positions are in WGS 84 Datum.

Chart affected: **BA Chart 177, 194, 2537,2538.**

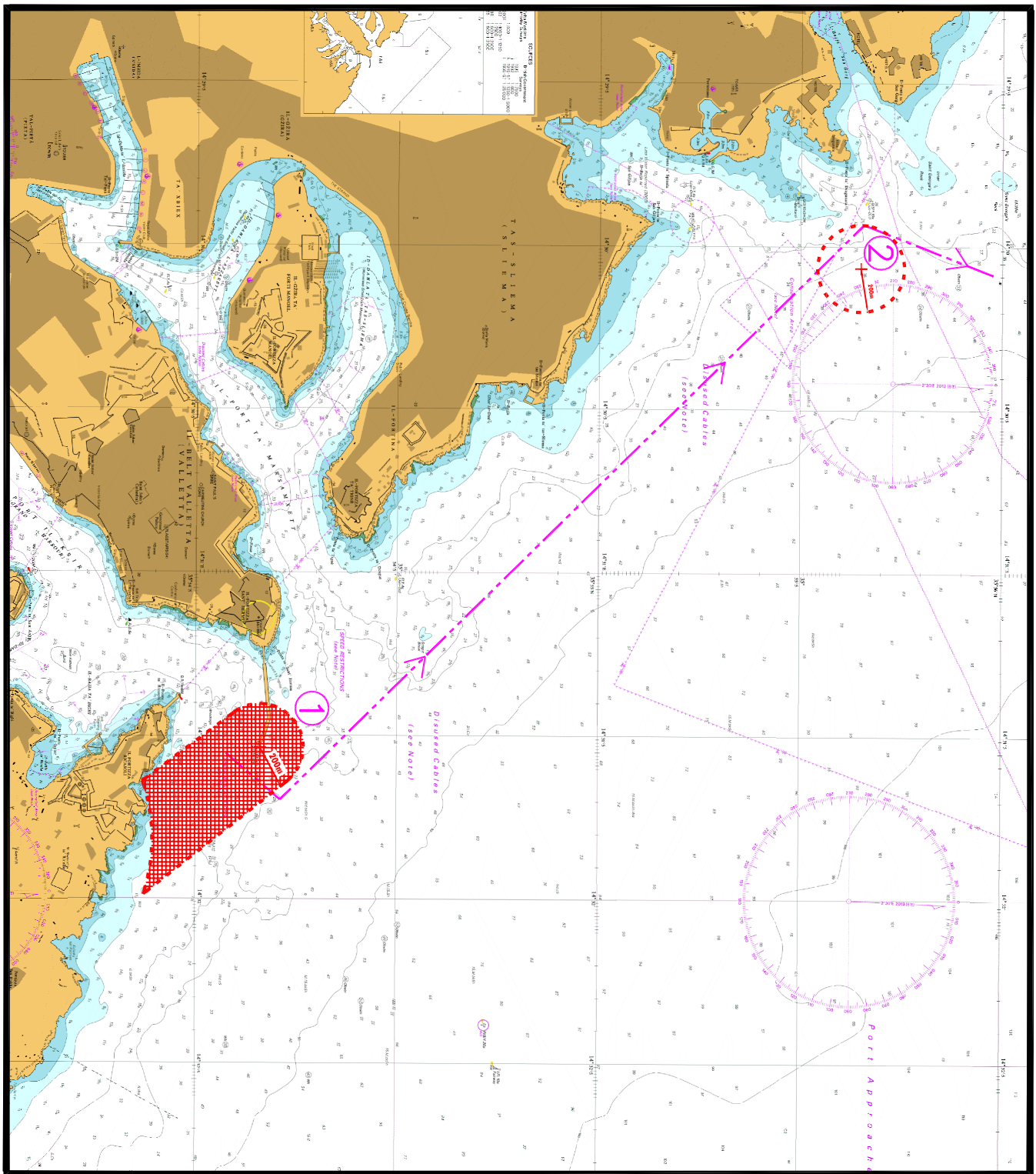


© British Crown Copyright 1970, 1983, 1986, 1988, 1999, 2000
All rights reserved.

The UK Hydrographic Office makes the accompanying data
Available to Malta Maritime Authority (Transport Malta)
Under the terms and conditions of agreement HO 1427/020930/01.

DISCLAIMER

Whilst the UK Hydrographic Office has endeavoured to ensure
That the material supplied is suitable for the purpose described,
It accepts no liability (to the maximum extent permitted by law)
For any damage or loss of any nature arising from its use.
The material supplied is used entirely at the Recipient's own risk.



© British Crown Copyright 1970, 1983, 1986, 1988, 1999, 2000
All rights reserved.

The UK Hydrographic Office makes the accompanying data
Available to Malta Maritime Authority (Transport Malta)
Under the terms and conditions of agreement HO 1427/020930/01.

DISCLAIMER

Whilst the UK Hydrographic Office has endeavoured to ensure
That the material supplied is suitable for the purpose described,
It accepts no liability (to the maximum extent permitted by law)
For any damage or loss of any nature arising from its use.
The material supplied is used entirely at the Recipient's own risk.