



PORTS AND YACHTING DIRECTORATE

LOCAL NOTICE TO MARINERS No 168 of 2022

Our Ref: **TM/PYD/0083/97**

22 September 2022



Transport Malta

Malta Transport Centre,
Triq Pantar, Hal Lija, LJA 2021
Malta

Tel: (356) 2122 2203
Fax: (356) 2125 0365
Email: info.tm@transport.gov.mt

www.transport.gov.mt

Masters Beach Water-Polo Fundraising Charity Event - 2022

The Ports and Yachting Directorate, Transport Malta, would like to notify mariners that a group of ex-National Team water-polo players will be organising a one-day fundraising charity event at Blue Lagoon in Comino. The event will be held on Saturday 1st October 2022 between 0900 hours and 1500 hours.

For the event a makeshift water-polo pitch at Blue Lagoon will be set up within the area formed by joining the points A, B, C and D, as shown on the attached chart 1.

Position	Latitude (N)	Longitude (E)
A	36° 00'.788	014° 19'.376
B	36° 00'.792	014° 19'.388
C	36° 00'.778	014° 19'.397
D	36° 00'.773	014° 19'.385

If due to unfavourable weather on the day, the event cannot be held at the Blue Lagoon, it will be held on the same date and time at either San Niklaw Bay, Comino within the area formed by joining the points E, F, G and H, as shown on the attached chart 2.

Position	Latitude (N)	Longitude (E)
E	36° 01'.027	014° 19'.741
F	36° 01'.024	014° 19'.754
G	36° 01'.008	014° 19'.750
H	36° 01'.011	014° 19'.737

or at Mgarr ix-Xini Bay, Gozo within the area formed by joining the points I, J, K and L, as shown on the attached chart 3.

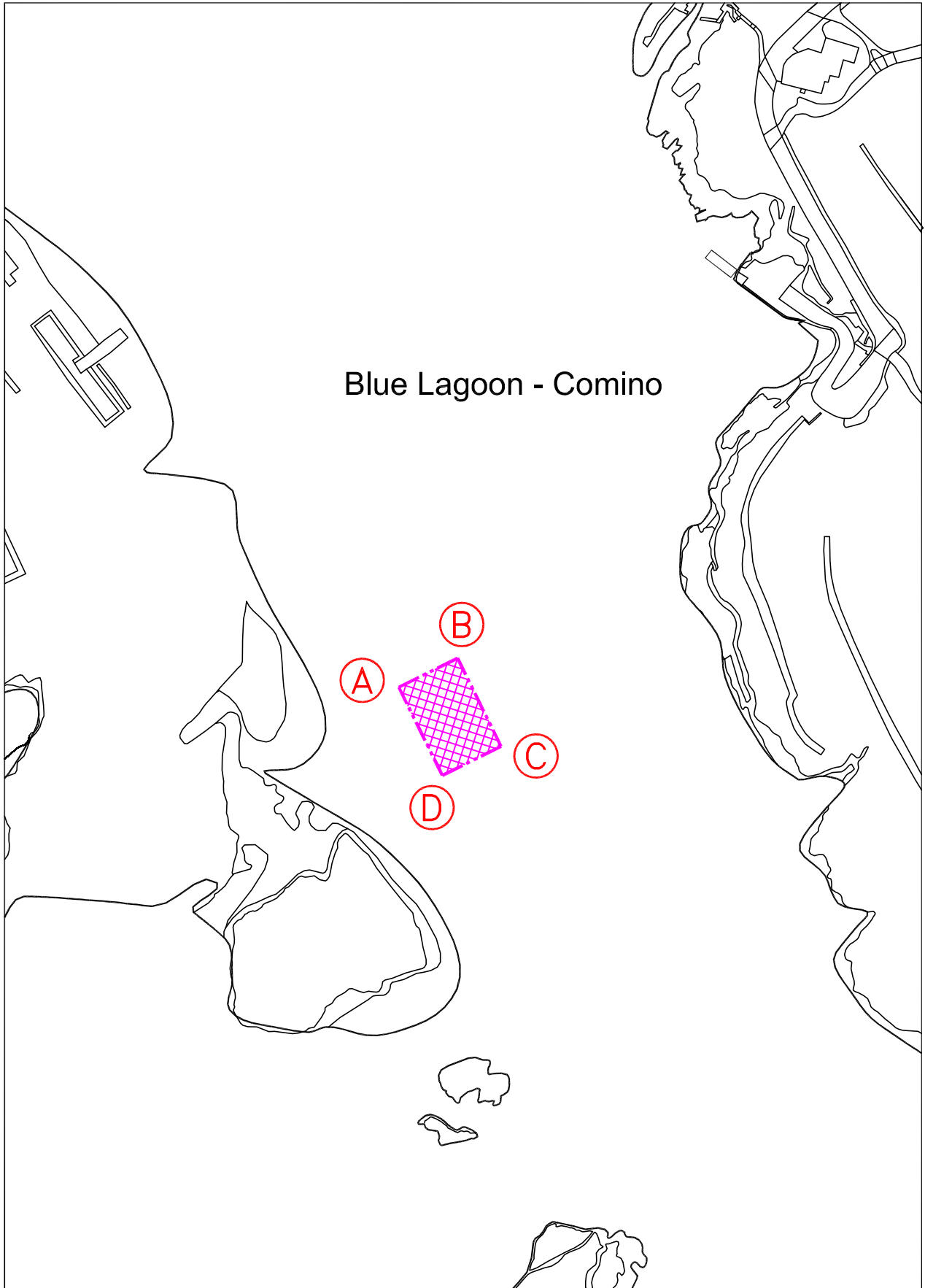


Position	Latitude (N)	Longitude (E)
I	36° 01'.206	014° 16'.280
J	36° 01'.214	014° 16'.290
K	36° 01'.202	014° 16'.304
L	36° 01'.195	014° 16'.294

If due to unfavourable weather conditions the event cannot be held in any of the above-mentioned localities the event will be held on Saturday 8th October 2022, at the same time, in either one of the above-mentioned localities.

All vessels navigating within the bays are requested to keep a sharp lookout, navigate with caution and at slow speed, and give the water-polo pitch a wide berth.

Charts effected: **BA 211A, 2537**

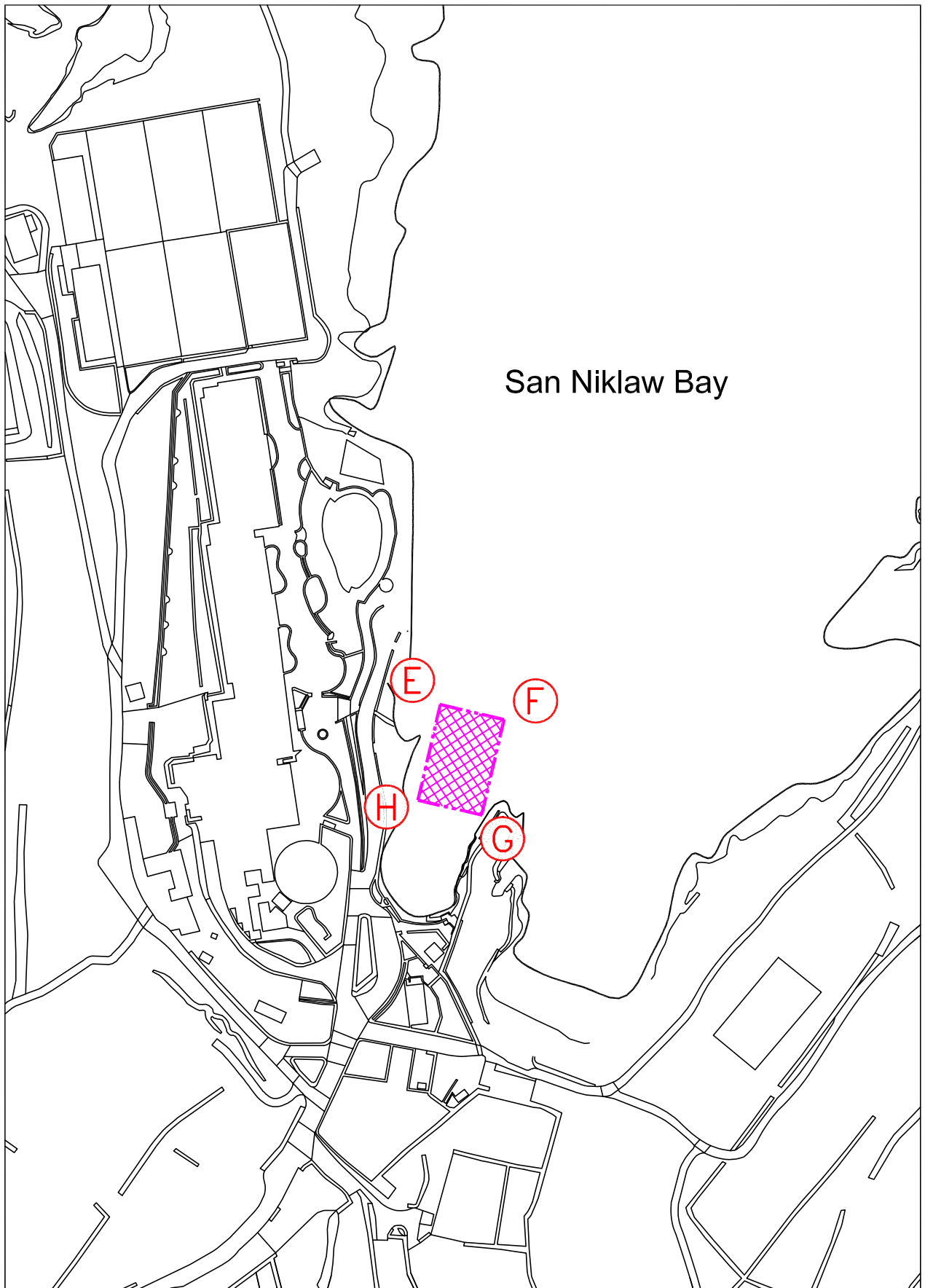


© Transport Malta all rights reserved

DISCLAIMER

Whilst the Ports and Yachting Directorate, Transport Malta has endeavoured to ensure that the material supplied is suitable for the purpose described, it accepts no liability (to the maximum extent permitted by law) for any damage or loss of any nature arising from its use.

The material supplied is used entirely at the Recipient's own risk.

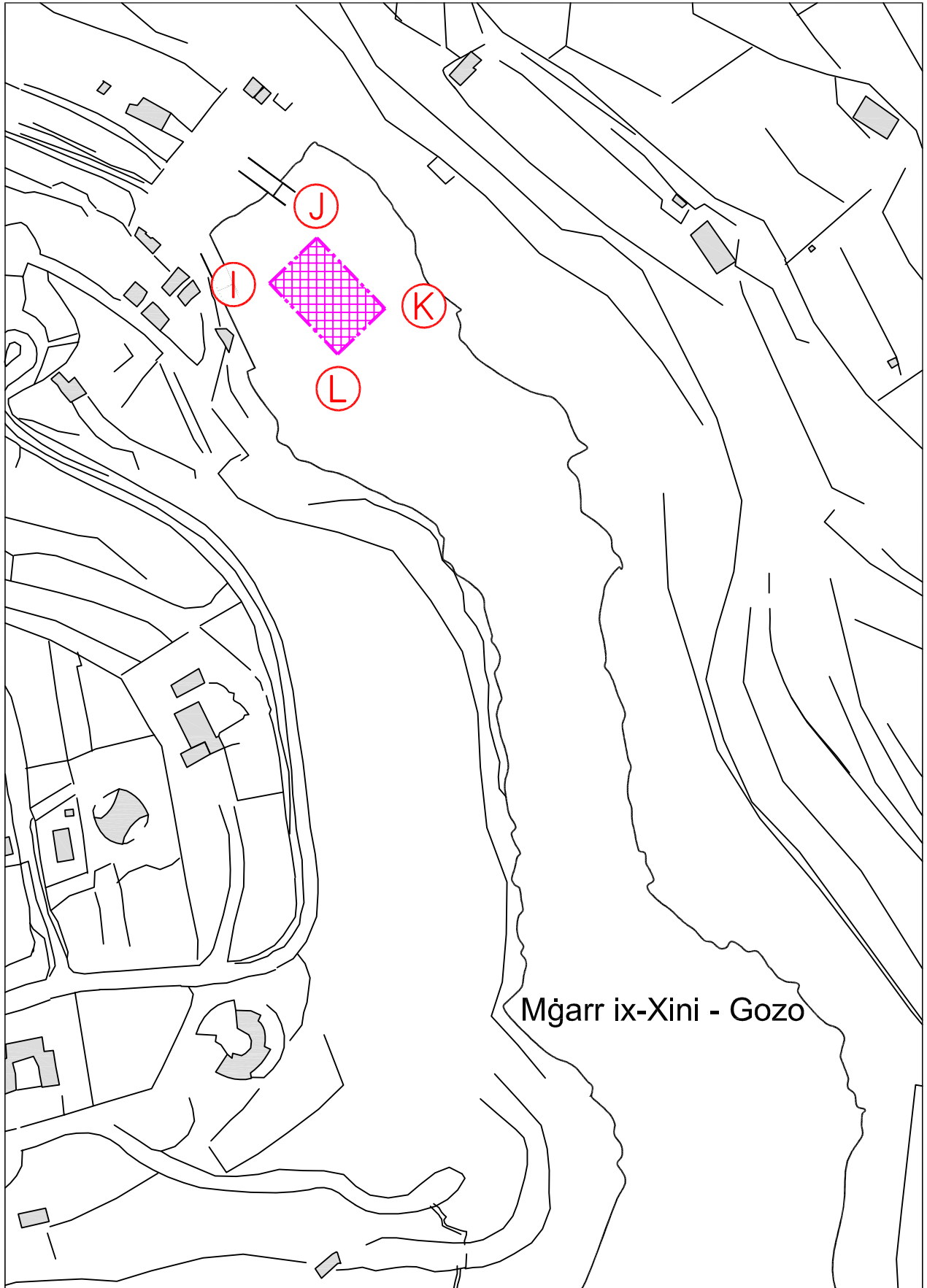


© Transport Malta all rights reserved

DISCLAIMER

Whilst the Ports and Yachting Directorate, Transport Malta has endeavoured to ensure that the material supplied is suitable for the purpose described, it accepts no liability (to the maximum extent permitted by law) for any damage or loss of any nature arising from its use.

The material supplied is used entirely at the Recipient's own risk.



© Transport Malta all rights reserved

DISCLAIMER

Whilst the Ports and Yachting Directorate, Transport Malta has endeavoured to ensure that the material supplied is suitable for the purpose described, it accepts no liability (to the maximum extent permitted by law) for any damage or loss of any nature arising from its use.

The material supplied is used entirely at the Recipient's own risk.