



PORTS AND YACHTING DIRECTORATE

LOCAL NOTICE TO MARINERS No 050 of 2022

Our Ref: **TM/PYD/22/99/1**

29 April 2022



Transport Malta

Malta Transport Centre,
Triq Pantar, Hal Lija, LJA 2021
Malta

Tel: (356) 2122 2203
Fax: (356) 2125 0365
Email: info.tm@transport.gov.mt

www.transport.gov.mt

Fireworks Display from Manoel Island – Pilgrimage of Our Lady, Star of the Sea - Sliema

The Ports and Yachting Directorate, Transport Malta, notifies Mariners that fireworks will be let off from the foreshore of Manoel Island in Sliema Creek, centred on points A and B as shown on attached chart:

Position	Latitude (N)	Longitude (E)
A	35° 54'.325	014° 30'.255
B	35° 54'.523	014° 30'.282

The fireworks display will take place as follows:

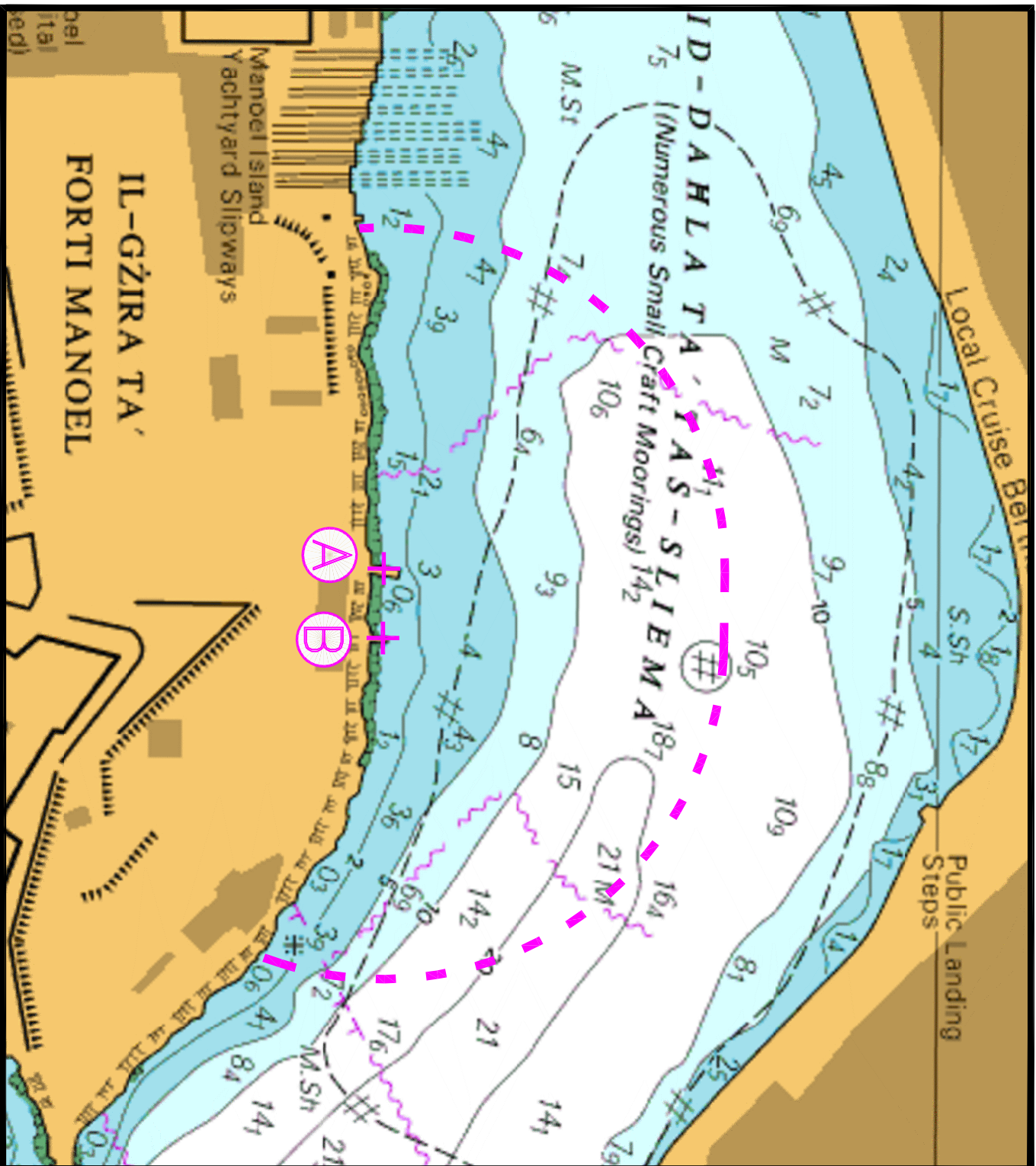
Sunday 8th May 2022 between 0900 hours and 0930 hours and
 between 1000 hours and 1030 hours.

In view of the above, mariners are informed that navigation within 200 meters from the above-mentioned positions, point A and point B, in Marsamxett Harbour and as shown on attached chart, will be prohibited during the date and times of the fireworks displays as mentioned above. All craft moored within the indicated area (as shown on attached chart) are to be removed on the above-mentioned date and times of the fireworks displays.

The Ports and Yachting Directorate, Transport Malta, will accept no Liabilities whatsoever for any vessels that are left lying in the area on the above-mentioned date and times

Mariners are to obey instructions and directions given on VHF channel 12 and/or 16 by Valletta VTS and any Enforcement Agency in the area.

Chart Affected: **BA 177**



© British Crown Copyright 1970, 1983, 1986, 1988, 1999, 2000
All rights reserved.

The UK Hydrographic Office makes the accompanying data
Available to Malta Maritime Authority (Transport Malta)
Under the terms and conditions of agreement HO 1427/020930/01.

DISCLAIMER

Whilst the UK Hydrographic Office has endeavoured to ensure
That the material supplied is suitable for the purpose described,
It accepts no liability (to the maximum extent permitted by law)
For any damage or loss of any nature arising from its use.
The material supplied is used entirely at the Recipient's own risk.