



PORTS AND YACHTING DIRECTORATE

LOCAL NOTICE TO MARINERS No 004 of 2021

Our Ref: **TM/PYD/63/95**

06 January 2021



Transport Malta

Malta Transport Centre,
Triq Pantar, Hal Lija, LJA 2021
Malta

Tel: (356) 2122 2203
Fax: (356) 2125 0365
Email: info.tm@transport.gov.mt

www.transport.gov.mt

Benthic survey in Gzira, Il-Port ta' Marsamxett

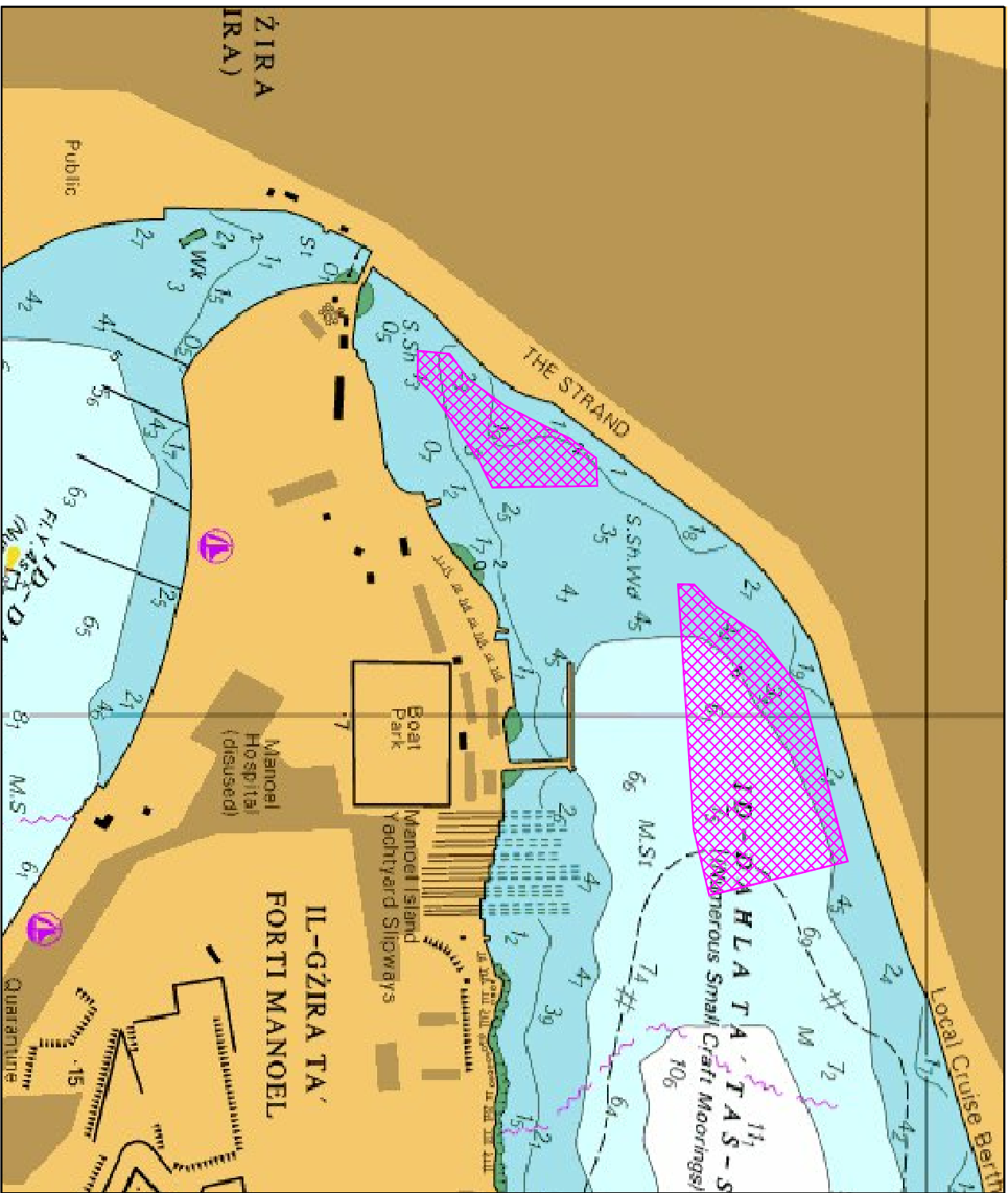
The Ports and Yachting Directorate, Transport Malta notifies mariners that a benthic survey will be carried out at Gzira in Il-Port ta' Marsamxett, the survey will start with immediate effect and will be completed by Monday 15th February 2021 (weather permitting) in the area shown hatched in magenta on attached chart.

The Benthic survey will be carried out by ROV which will be operated from land. Scuba divers will also be deployed to take samples and confirm findings.

Masters and operators of vessels are advised to keep a sharp lookout, navigate with caution and slow speed when in the vicinity.

Any instructions issued by Valletta Port Control (Valletta VTS) on VHF channel 12 and/or by any enforcement agency on site, are to be complied with.

Chart affected: **BA 177**



© British Crown Copyright 1970, 1983, 1986, 1988, 1999, 2000
 All rights reserved.

The UK Hydrographic Office makes the accompanying data
 Available to Malta Maritime Authority (Transport Malta)
 Under the terms and conditions of agreement HO 1427/020930/01.

DISCLAIMER

Whilst the UK Hydrographic Office has endeavoured to ensure
 That the material supplied is suitable for the purpose described,
 It accepts no liability (to the maximum extent permitted by law)
 For any damage or loss of any nature arising from its use.
 The material supplied is used entirely at the Recipient's own risk.