



PORTS AND YACHTING DIRECTORATE

NOTICE TO MARINERS No 55 of 2020

Our Ref: **TM/PYD/63/95**

25 November 2020

Seabed survey around the spoil ground

The Ports and Yachting Directorate, Transport Malta, notifies mariners that a marine survey will be carried out with the use of the following equipment: Remotely Operated Vehicle (ROV) side-scan sonar, multibeam and a Van Veen grab. This survey will be carried out by the vessels “Atlantis II” and “Wilfred”, they will be displaying lights and shapes as per COLREGS.

The survey area is bounded by the following coordinates.

Point	Latitude (N)	Longitude (E)
A	35° 53'.854	014° 31'.797
B	35° 54'.686	014° 32'.335
C	35° 55'.316	014° 31'.354
D	35° 56'.431	014° 31'.904
E	35° 57'.102	014° 32'.996
F	35° 54'.770	014° 36'.630
G	35° 53'.703	014° 36'.030
H	35° 53'.047	014° 34'.836
I	35° 52'.998	014° 33'.374

Weather permitting the survey will start on Tuesday 1st December 2020 and will be completed by Thursday 31st December 2020.

Since the vessels (“Atlantis II” and “Wilfred”) will be towing equipment and sometimes stationary, they will be restricted in their ability to manoeuvre.

Mariners are instructed to navigate with caution when the above-mentioned vessels are sighted and give a wide berth and observe a 500 metres radius restricted zone which will be implemented around the vessels “Atlantis II” and “Wilfred”.

Mariners are also notified to abide with any instructions from Valletta Port Control, (Valletta VTS) on VHF Channel 12.

Charts affected: **BA 2538, 177, 194.**

Positions referred to **WGS 84 DATUM**

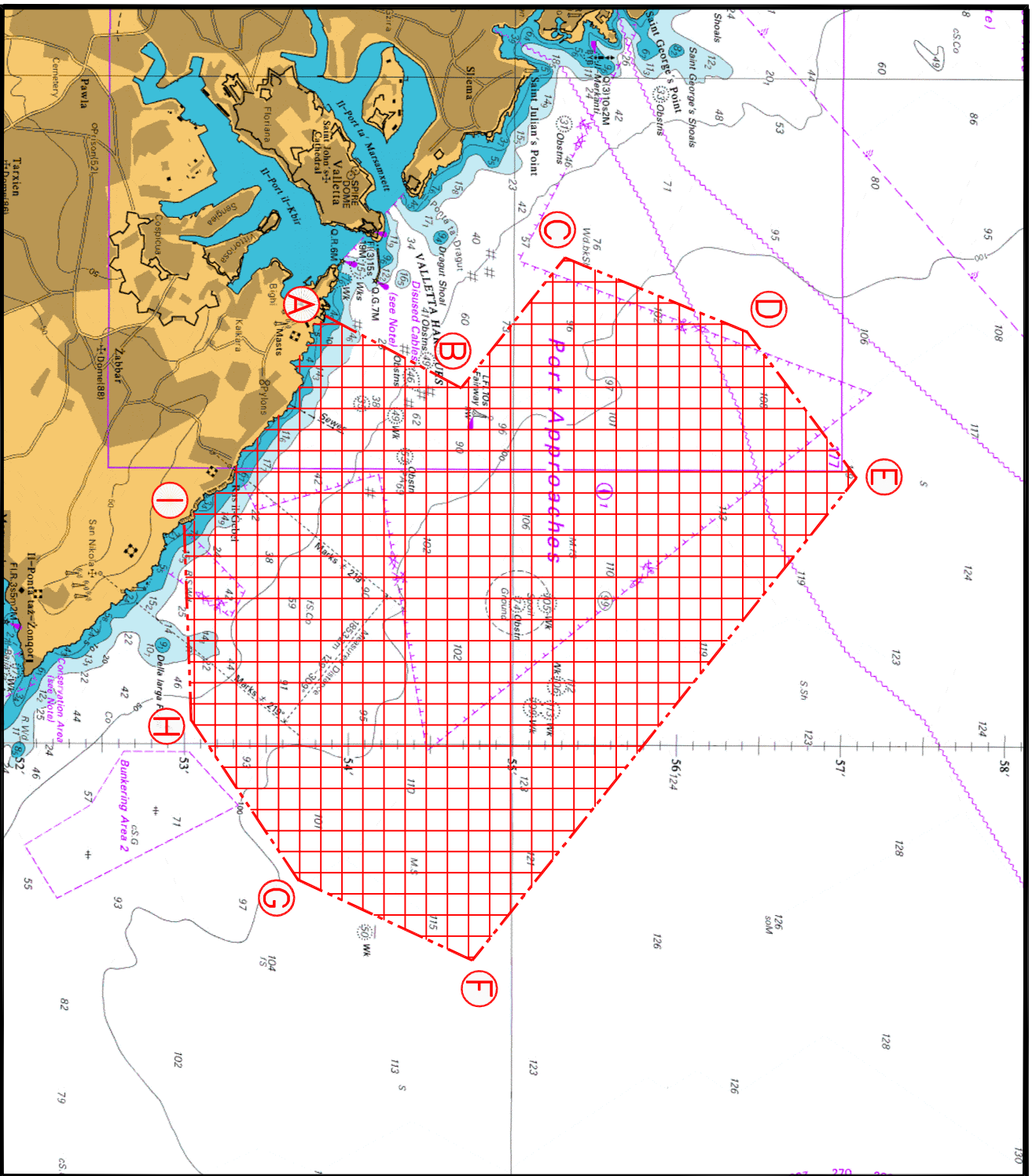


Transport Malta

Malta Transport Centre,
Triq Pantar, Hal Lija, LJA 2021
Malta

Tel: (356) 2122 2203
Fax: (356) 2125 0365
Email: info.tm@transport.gov.mt

www.transport.gov.mt



© British Crown Copyright 1970, 1983, 1986, 1988, 1999, 2000
All rights reserved.

The UK Hydrographic Office makes the accompanying data
Available to Malta Maritime Authority (Transport Malta)
Under the terms and conditions of agreement HO 1427/020930/01.

DISCLAIMER

Whilst the UK Hydrographic Office has endeavoured to ensure
That the material supplied is suitable for the purpose described,
It accepts no liability (to the maximum extent permitted by law)
For any damage or loss of any nature arising from its use.
The material supplied is used entirely at the Recipient's own risk.