



PORTS AND YACHTING DIRECTORATE

Transport Malta

NOTICE TO MARINERS No 39 of 2020

Our Ref: **TM/PYD/63/00**

Malta Transport Centre
Marsa, MRS 1917
Malta

Tel: (356) 2122 2203
Fax: (356) 2125 0365
Email: info.tm@transport.gov.mt

www.transport.gov.mt

14 August 2020

Marine Scientific Research in the North and East of Malta

The Ports and Yachting Directorate, Transport Malta, notifies mariners that a Marine Scientific Research in the North and East of Malta will be starting on Friday 28th August 2020 and is expected to be completed by Sunday 20th September 2020.

The research will be carried out by the vessel “Sonne” and will include the towing of equipment, there will also be other equipment left on the seabed for the duration of the research.

The research will be carried out in zone A as shown on attached chart but if due to adverse weather conditions the research cannot be carried out in zone A it will be carried out in zone C.

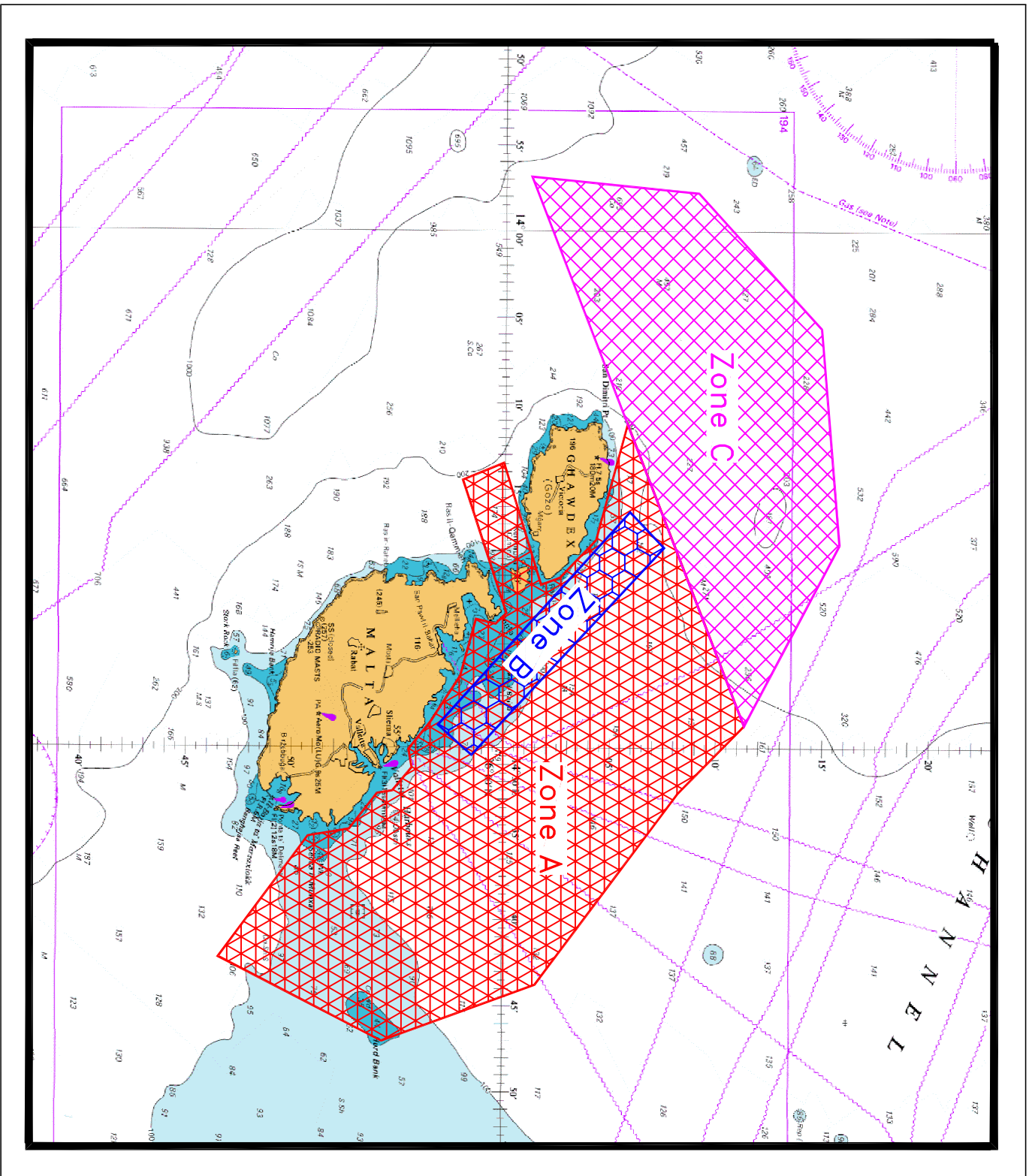
In zone B equipment will be left at the sea bottom but not in bunkering area 1.

Since the vessel will be towing equipment, it will be restricted in her ability to manoeuvre.

Mariners are instructed to navigate with caution when the above-mentioned vessel is sighted and give a wide berth and observe a 1NM (Nautical Mile) radius restricted zone which will be implemented around the vessel “Sonne”.

Mariners are also notified to abide with any instructions given by Valletta Port Control, (Valletta VTS) on VHF Channel 12.

Charts Affected: **BA 2537, 2538, 211, 194, 2123, 2124**



© British Crown Copyright 1970, 1983, 1986, 1988, 1999, 2000
All rights reserved.

The UK Hydrographic Office makes the accompanying data
Available to Malta Maritime Authority (Transport Malta)
Under the terms and conditions of agreement HO 1427/020930/01.

DISCLAIMER

Whilst the UK Hydrographic Office has endeavoured to ensure
That the material supplied is suitable for the purpose described,
It accepts no liability (to the maximum extent permitted by law)
For any damage or loss of any nature arising from its use.
The material supplied is used entirely at the Recipient's own risk.