



PORTS AND YACHTING DIRECTORATE

Transport Malta

LOCAL NOTICE TO MARINERS No 091 of 2020

Our Ref: **TM/PYD/22/99/1**

Malta Transport Centre
Marsa, MRS 1917
Malta

Tel: (356) 2122 2203
Fax: (356) 2125 0365
Email: info.tm@transport.gov.mt

www.transport.gov.mt

11 August 2020

Fireworks Display - Feast of Stella Maris from Manoel Island

The Ports and Yachting Directorate, Transport Malta notifies Mariners that fireworks will be let off from the foreshore of Manoel Island in Sliema Creek, centred on point A as shown on attached chart:

Position	Latitude (N)	Longitude (E)
A	35° 54'.312	014° 30'.267

The fireworks display will take place on Sunday 23rd August 2020 at the following times

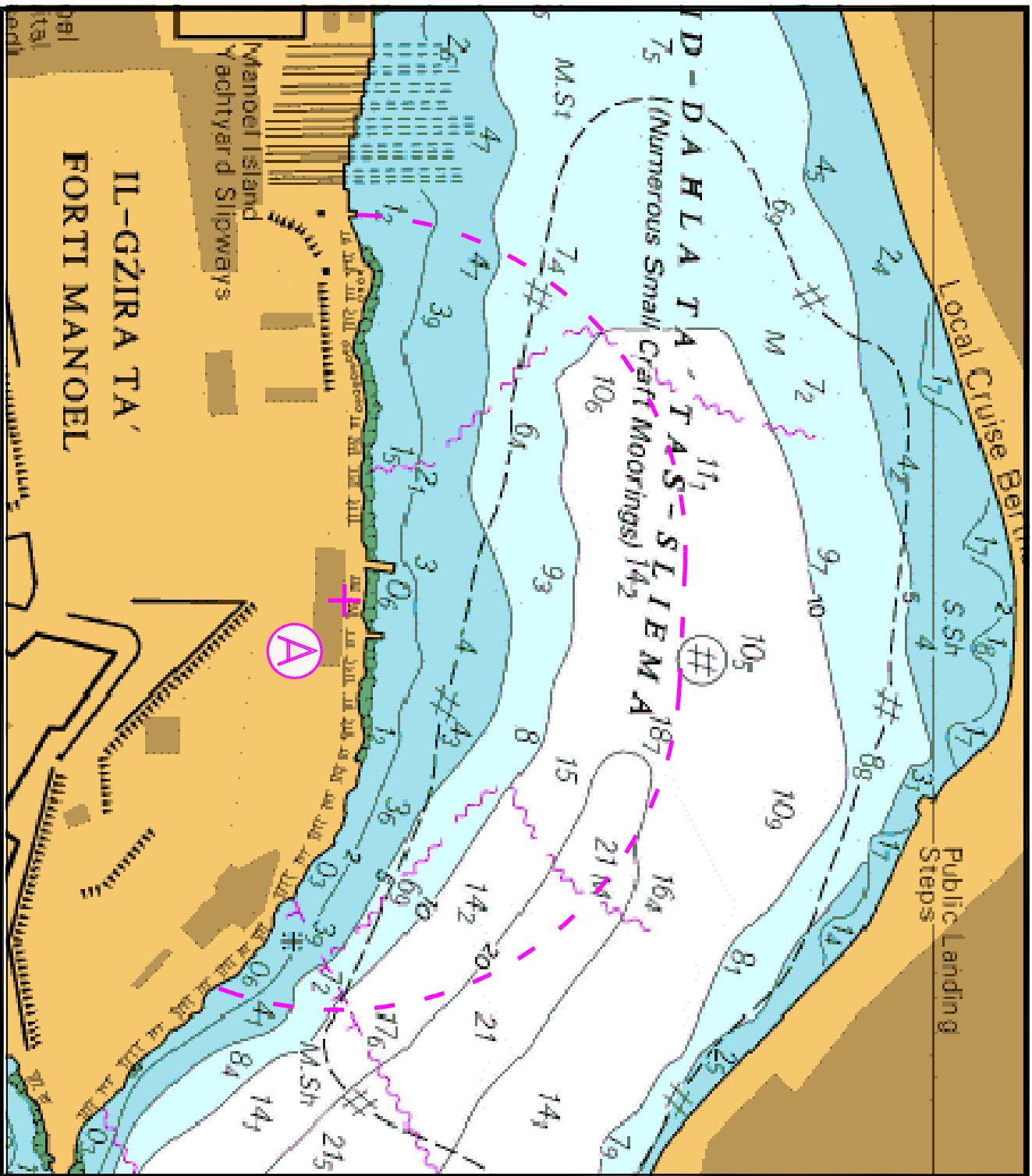
from 0900 hours till 0910 hours,
from 1200 hours till 1215 hours and
from 2030 hours till 2130 hours.

In view of the above, mariners are informed that navigation within 220 meters from the above-mentioned position, point A on attached chart, in Marsamxett Harbour will be prohibited during the date and times of the fireworks displays as mentioned above. All craft moored within the indicated area (as shown on attached chart) are to be removed on the above-mentioned date and times of the fireworks displays.

The Ports and Yachting Directorate, Transport Malta will accept no Liabilities whatsoever for any vessels that are left lying in the area on the above-mentioned date and times

Mariners are to obey instructions issued by Valletta Port Control (Valletta VTS) on VHF channel 12 and any enforcement agency.

Chart Affected: **BA 177**



© British Crown Copyright 1970, 1983, 1986, 1988, 1999, 2000
 All rights reserved.

The UK Hydrographic Office makes the accompanying data
 Available to Malta Maritime Authority (Transport Malta)
 Under the terms and conditions of agreement HO 1427/020930/01.

DISCLAIMER

Whilst the UK Hydrographic Office has endeavoured to ensure
 That the material supplied is suitable for the purpose described,
 It accepts no liability (to the maximum extent permitted by law)
 For any damage or loss of any nature arising from its use.
 The material supplied is used entirely at the Recipient's own risk.