



PORTS AND YACHTING DIRECTORATE

Transport Malta

LOCAL NOTICE TO MARINERS No 078 of 2020

Our Ref: **TM/PYD/63/95**

Malta Transport Centre
Marsa, MRS 1917
Malta

Tel: (356) 2122 2203
Fax: (356) 2125 0365
Email: info.tm@transport.gov.mt

22 July 2020

www.transport.gov.mt

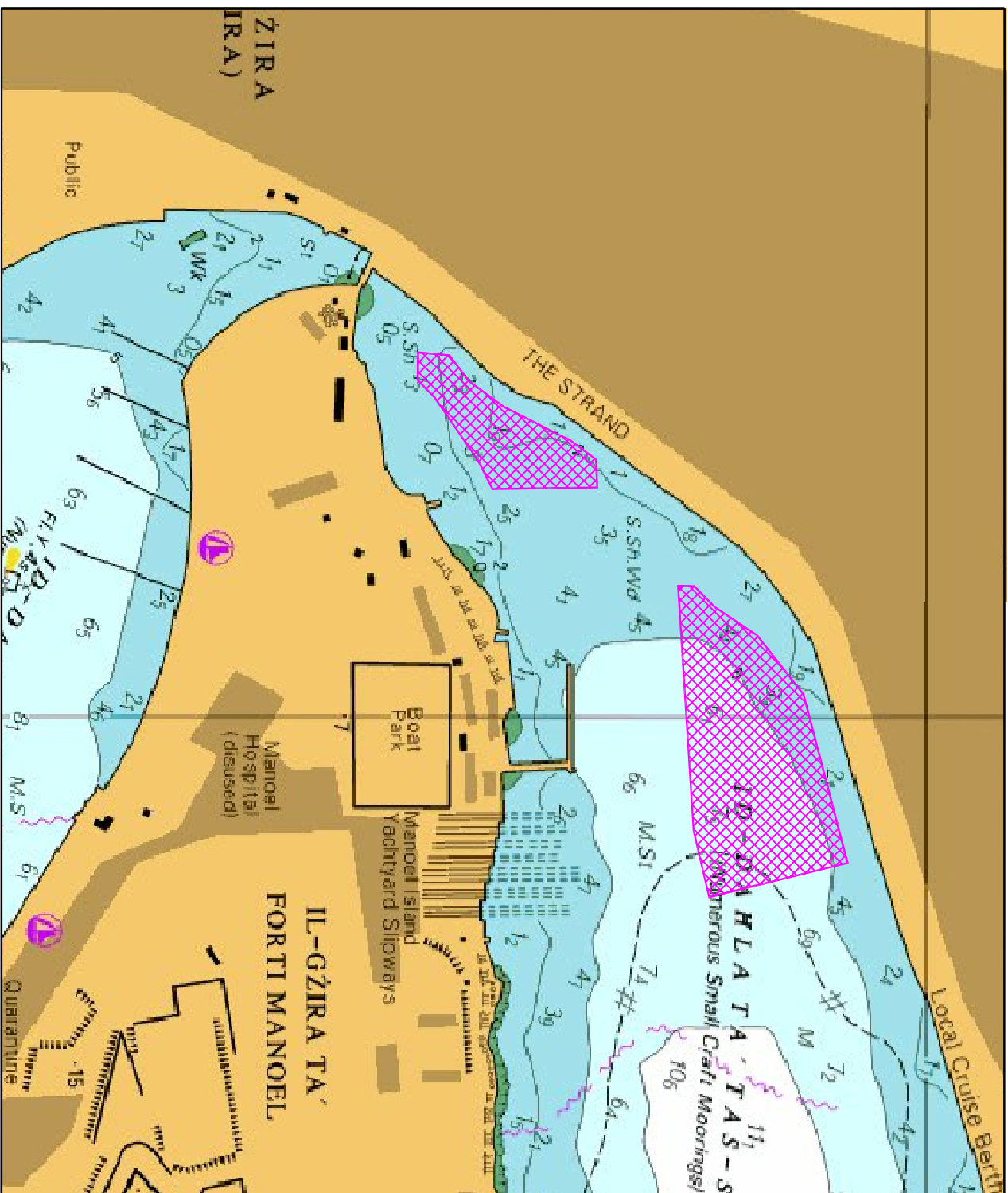
Benthic survey in Gzira, Marsamxett Harbour

The Ports and Yachting Directorate, Transport Malta notifies mariners that a benthic survey will be carried out at Gzira in Marsamxett Harbour, between Friday 24th July 2020 and Friday 14th August 2020 (weather permitting) in the area shown hatched in magenta on attached chart.

The Benthic survey will be carried out by ROV which will be operated from land. Scuba divers will also be deployed to take samples and confirm findings. A support vessel will be used while scuba divers are deployed, she will be moving slowly and will display the international code of Signals flag "A".

Masters and operators of vessels are advised to keep a sharp lookout, navigate with caution and slow speed and give the above support vessels a wide berth. Instructions given by Valletta Port Control (Valletta VTS) on VHF Channel 12 are to be complied with.

Chart affected: **BA 177**



© British Crown Copyright 1970, 1983, 1986, 1988, 1999, 2000
All rights reserved.

The UK Hydrographic Office makes the accompanying data
Available to Malta Maritime Authority (Transport Malta)
Under the terms and conditions of agreement HO 1427/020930/01.

DISCLAIMER

Whilst the UK Hydrographic Office has endeavoured to ensure
That the material supplied is suitable for the purpose described,
It accepts no liability (to the maximum extent permitted by law)
For any damage or loss of any nature arising from its use.
The material supplied is used entirely at the Recipient's own risk.