



PORTS AND YACHTING DIRECTORATE

Transport Malta

## LOCAL NOTICE TO MARINERS No 047 OF 2020

Our Ref: **TM/PYD/0001/20**

Malta Transport Centre  
Marsa, MRS 1917  
Malta

Tel: (356) 2122 2203  
Fax: (356) 2125 0365  
Email: [info.tm@transport.gov.mt](mailto:info.tm@transport.gov.mt)

09 June 2020

[www.transport.gov.mt](http://www.transport.gov.mt)

### Water sampling in the Grand Harbour, Valletta

The Ports and Yachting Directorate, Transport Malta notifies mariners that water sampling will be carried out in different areas within the Grand Harbour, Valletta. The sampling is to start on Monday 15<sup>th</sup> June 2020 and will be completed by Monday 24<sup>th</sup> June 2020, between 0700 hours and 1600 hours daily.

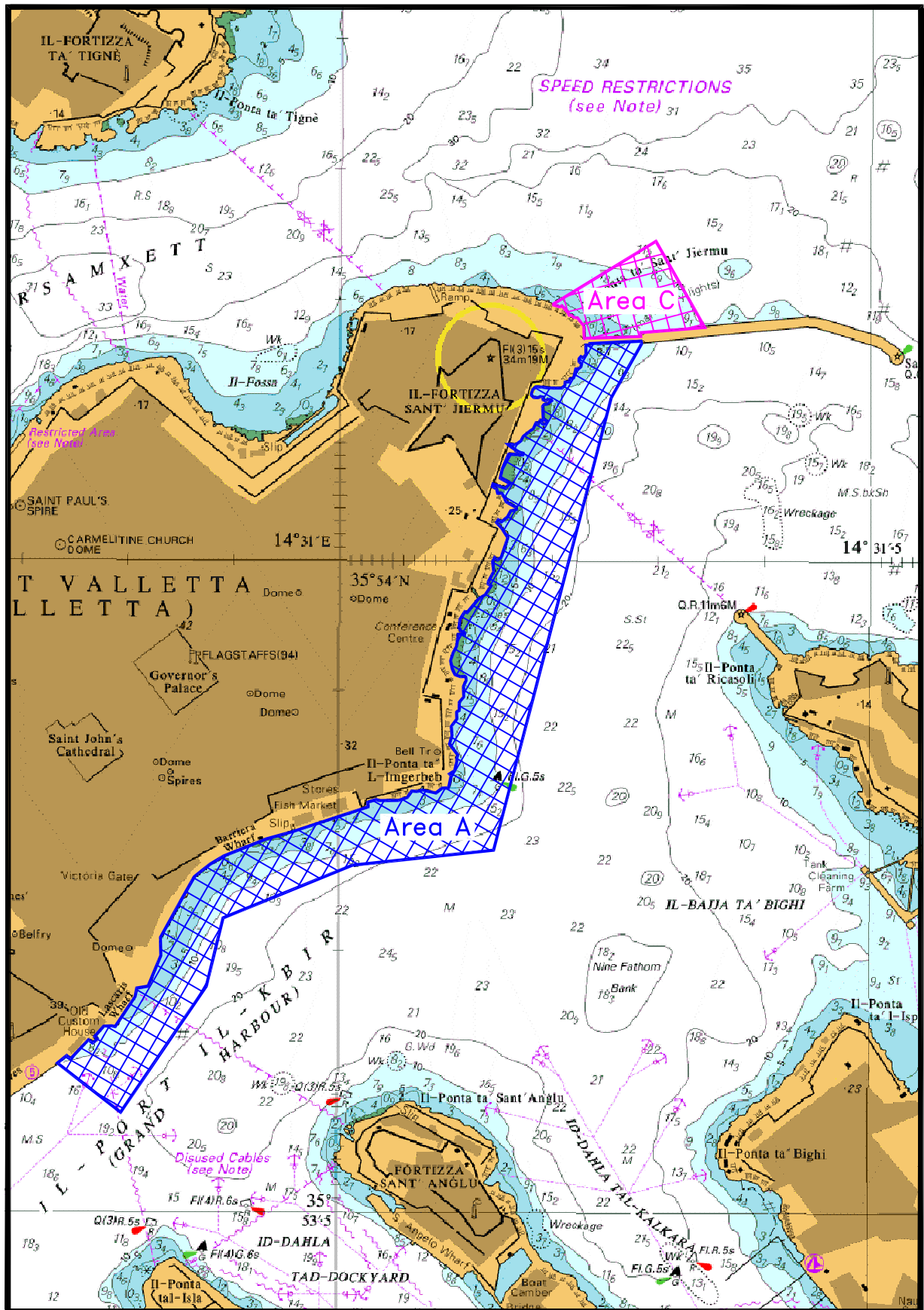
The sampling will be carried out from the work vessel BETTY.

The sampling will be carried out within the areas A (shown hatched in blue on attached chart 1), area B (shown hatched red on attached chart 2) and area C (shown hatched in magenta on attached chart 1). The works will be coordinated by the Traffic Management Unit (TMU), the contractor and Valletta Port Control (Valletta VTS).

Masters and operators of vessels are to seek information from Valletta Port Control (Valletta VTS) about operating restrictions from Transport Malta and coordinate with the contractors on site in the locations indicated above.

They are also advised to keep a sharp lookout, navigate with caution and slow speed and give the work vessel BETTY a wide berth. They are to comply with any instructions given by Valletta Port Control (Valletta VTS) on VHF Channel 12 and any enforcement agency on site.

Charts affected: **BA 177, 2537, 2538**

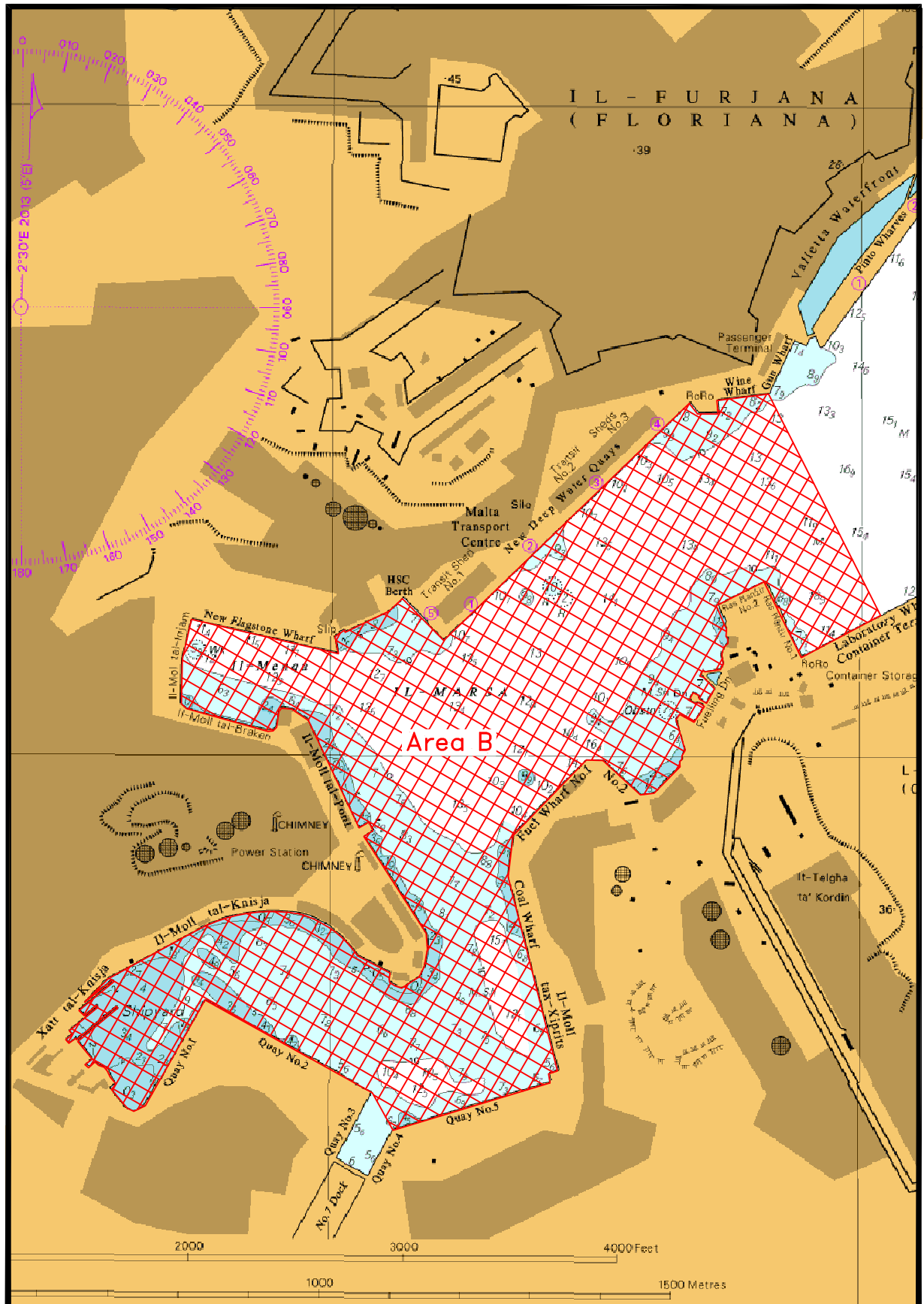


© British Crown Copyright 1970, 1983, 1986, 1988, 1999, 2000  
 All rights reserved.

The UK Hydrographic Office makes the accompanying data  
 Available to Malta Maritime Authority (Transport Malta)  
 Under the terms and conditions of agreement HO 1427/020930/01.

**DISCLAIMER**

Whilst the UK Hydrographic Office has endeavoured to ensure  
 That the material supplied is suitable for the purpose described,  
 It accepts no liability (to the maximum extent permitted by law)  
 For any damage or loss of any nature arising from its use.  
 The material supplied is used entirely at the Recipient's own risk.



© British Crown Copyright 1970, 1983, 1986, 1988, 1999, 2000  
 All rights reserved.

The UK Hydrographic Office makes the accompanying data  
 Available to Malta Maritime Authority (Transport Malta)  
 Under the terms and conditions of agreement HO 1427/020930/01.

**DISCLAIMER**

Whilst the UK Hydrographic Office has endeavoured to ensure  
 That the material supplied is suitable for the purpose described,  
 It accepts no liability (to the maximum extent permitted by law)  
 For any damage or loss of any nature arising from its use.  
 The material supplied is used entirely at the Recipient's own risk.