



PORTS AND YACHTING DIRECTORATE

Transport Malta

LOCAL NOTICE TO MARINERS No 033 of 2020

Our Ref: **TM/PYD/111/92**

Malta Transport Centre
Marsa, MRS 1917
Malta

Tel: (356) 2122 2203
Fax: (356) 2125 0365
Email: info.tm@transport.gov.mt

20 April 2020

www.transport.gov.mt

Zones reserved for swimmers in Comino

The Ports and Yachting Directorate, Transport Malta notifies all bathers, mariners and owners of vessels that the following arrangements will be made for Blue Lagoon, Santa Maria Bay and San Niklaw Bay in the North Comino channel for the period between 1 May 2020 and 15 October 2020.

1a) **Blue Lagoon – Comino Swimmers' Zone** (see Figure 1 attached)

No vessels or objects which may endanger the safety of bathers, including any type of fishing gear/implements, shall be used within a swimmers' zone. The swimmers' zone is being reserved exclusively for bathers and is delineated by the following coordinates:-

| Position | Latitude (N) | Longitude (E) | |
|----------|--------------|---------------|---------|
| 1A | 36° 00'.893 | 014° 19'.281 | (Shore) |
| 1B | 36° 00'.898 | 014° 19'.289 | |
| 1C | 36° 00'.825 | 014° 19'.351 | |
| 1D | 36° 00'.846 | 014° 19'.440 | |
| 1E | 36° 00'.854 | 014° 19'.448 | (Shore) |
| 1F | 36° 00'.751 | 014° 19'.471 | (Shore) |
| 1G | 36° 00'.740 | 014° 19'.390 | (Shore) |

1b) **Mooring areas for Commercial vessels**

2 mooring areas are being assigned for Commercial vessels. The boundaries of these mooring areas are delineated by the following coordinates:-

| Position | Latitude (N) | Longitude (E) | |
|----------|--------------------|---------------------|---------------|
| 4 | 36° 01'.004 | 014° 19'.397 | (Shore) |
| 5 | 36° 00'.965 | 014° 19'.332 | (Buoy) |
| 6 | 36° 00'.927 | 014° 19'.364 | |



Transport Malta

| | | | |
|----|-------------|--------------|---------|
| 7 | 36° 00'.974 | 014° 19'.425 | (Shore) |
| 8 | 36° 00'.920 | 014° 19'.458 | (Shore) |
| 9 | 36° 00'.941 | 014° 19'.433 | |
| 10 | 36° 00'.904 | 014° 19'.383 | |
| 11 | 36° 00'.859 | 014° 19'.421 | |
| 12 | 36° 00'.866 | 014° 19'.439 | (Shore) |

1c) Fairway

A fairway has been established as indicated in the chart attached Figure 1 and in the following positions. Special marks fitted with a yellow light flashing every 5 seconds will be placed at points **1, 2, 3** and **5**.

| Position | Latitude (N) | Longitude (E) | |
|----------|--------------------|---------------------|---------------|
| 1 | 36° 00'.852 | 014° 19'.401 | (Buoy) |
| 2 | 36° 00'.913 | 014° 19'.346 | (Buoy) |
| 3 | 36° 00'.952 | 014° 19'.310 | (Buoy) |
| 5 | 36° 00'.965 | 014° 19'.332 | (Buoy) |
| 11 | 36° 00'.859 | 014° 19'.421 | |

9a) Il-Bajja ta' San Niklaw – Comino Swimmers' Zone (see Figure 9 attached)

No vessels or objects which may endanger the safety of bathers, including any type of fishing gear/implements, shall be used within a swimmers' zone. The swimmers' zone is being reserved exclusively for bathers and is delineated by the following coordinates:-

| Position | Latitude (N) | Longitude (E) | |
|----------|--------------|---------------|---------|
| 9A | 36° 01'.008 | 014° 19'.735 | (Shore) |
| 9B | 36° 01'.005 | 014° 19'.749 | (Shore) |
| 9C | 36° 01'.001 | 014° 19'.766 | |
| 9D | 36° 01'.039 | 014° 19'.773 | |
| 9E | 36° 01'.037 | 014° 19'.820 | (Shore) |

9b) Fairway

The fairway was established by Notice to Mariners No 07 of 2017 and is to be used solely for navigation and should otherwise be kept clear.



Transport Malta

10a) Il-Bajja ta' Santa Maria - Comino (Inner) Swimmers' Zone

(see Figure 10 attached)

No vessels or objects which may endanger the safety of bathers, including any type of fishing gear/implements, shall be used within a swimmers' zone. The swimmers' zone is being reserved exclusively for bathers and is delineated by the following coordinates:-

| Position | Latitude (N) | Longitude (E) | |
|----------|--------------|---------------|---------|
| 10A | 36° 00'.996 | 014° 20'.180 | (Shore) |
| 10B | 36° 01'.001 | 014° 20'.185 | |
| 10C | 36° 00'.997 | 014° 20'.247 | |
| 10D | 36° 00'.984 | 014° 20'.249 | (Shore) |

10b) Fairway

The fairway was established by Notice to Mariners No 08 of 2017 and is to be used solely for navigation and should otherwise be kept clear.

53) Il-Bajja ta' Santa Maria - Comino (Outer) Swimmers' Zone

(see Figure 53 attached)

No vessels or objects which may endanger the safety of bathers, including any type of fishing gear/implements, shall be used within a swimmers' zone. The swimmers' zone is being reserved exclusively for bathers and is delineated by the following coordinates:-

| Position | Latitude (N) | Longitude (E) | |
|----------|--------------|---------------|---------|
| 53A | 36° 01'.089 | 14° 20'.289 | (Shore) |
| 53B | 36° 01'.134 | 14° 20'.301 | (Shore) |

A minimum safety distance of 5 metres from the swimmers' zone is to be maintained.

Nylon ropes supported by floats will delineate the swimmers' zone and may remain in place, two weeks after the stipulated date.

For the benefit and safety of all bathers and mariners, Transport Malta urges all visitors and commercial vessels to adhere to these arrangements. Enforcement Officers will be constantly patrolling the area.

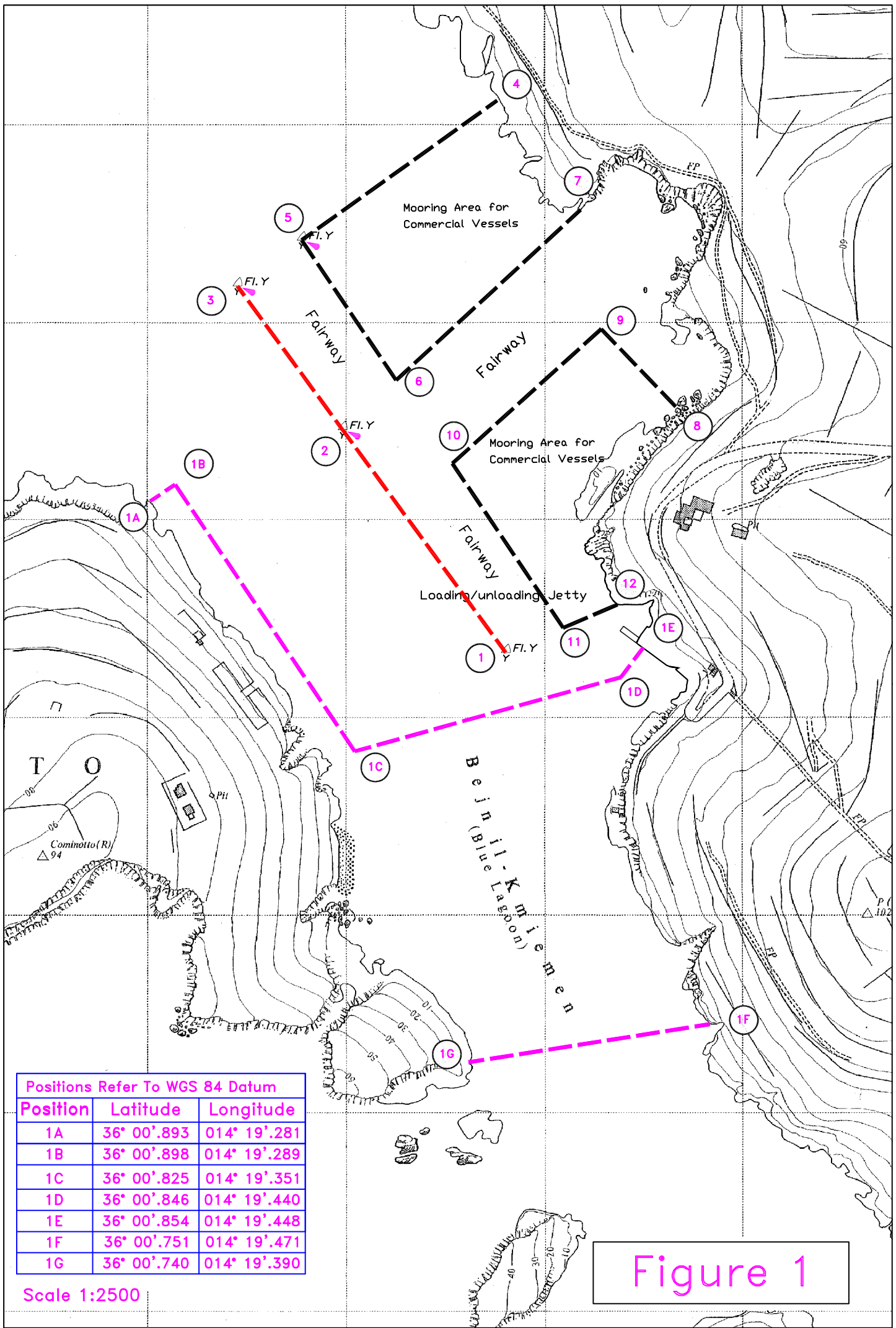


Transport Malta

Mariners are advised to keep a good lookout and navigate with caution and at slow speed in the North Comino Channel at Blue Lagoon and Santa Maria Bay. They are also reminded that it is prohibited to secure/moor any vessel to any of the marker buoys, swimmers' zone delineation markers and related gear belonging to Transport Malta.

All positions are referred to WGS 84 DATUM.

Chart Affected: BA 211



Positions Refer To WGS 84 Datum

| Position | Latitude | Longitude |
|----------|-------------|--------------|
| 1A | 36° 00'.893 | 014° 19'.281 |
| 1B | 36° 00'.898 | 014° 19'.289 |
| 1C | 36° 00'.825 | 014° 19'.351 |
| 1D | 36° 00'.846 | 014° 19'.440 |
| 1E | 36° 00'.854 | 014° 19'.448 |
| 1F | 36° 00'.751 | 014° 19'.471 |
| 1G | 36° 00'.740 | 014° 19'.390 |

Scale 1:2500

Figure 1

| Positions Refer To WGS 84 Datum | | |
|---------------------------------|-------------|--------------|
| Position | Latitude | Longitude |
| 10A | 36° 00'.996 | 014° 20'.180 |
| 10B | 36° 01'.001 | 014° 20'.185 |
| 10C | 36° 00'.997 | 014° 20'.247 |
| 10D | 36° 00'.984 | 014° 20'.249 |

Scale 1:2500

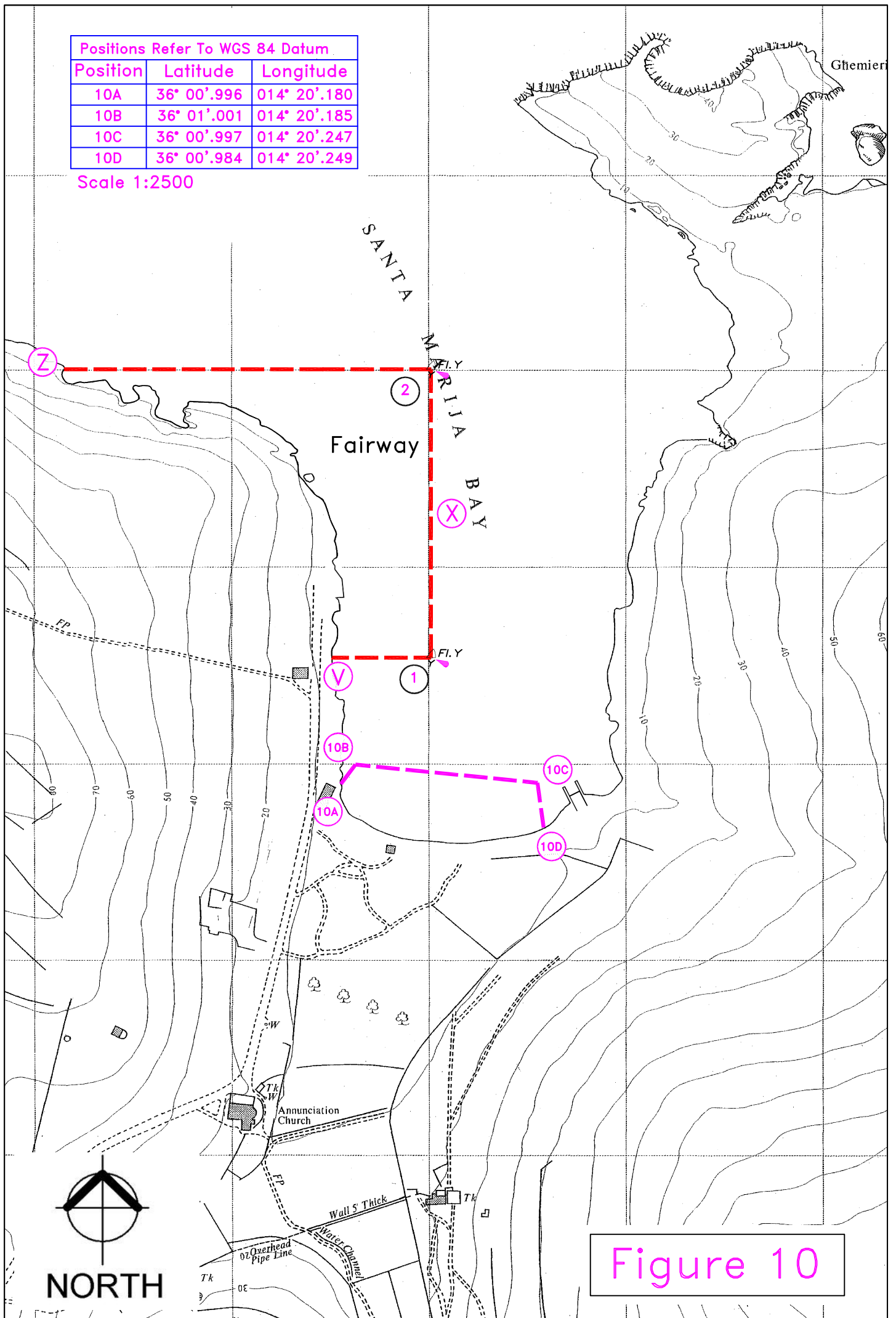


Figure 10

Positions Refer To WGS 84 Datum

| Position | Latitude | Longitude |
|----------|-------------|--------------|
| 53A | 36° 01'.089 | 014° 20'.289 |
| 53B | 36° 01'.134 | 014° 20'.301 |

Scale 1:2500

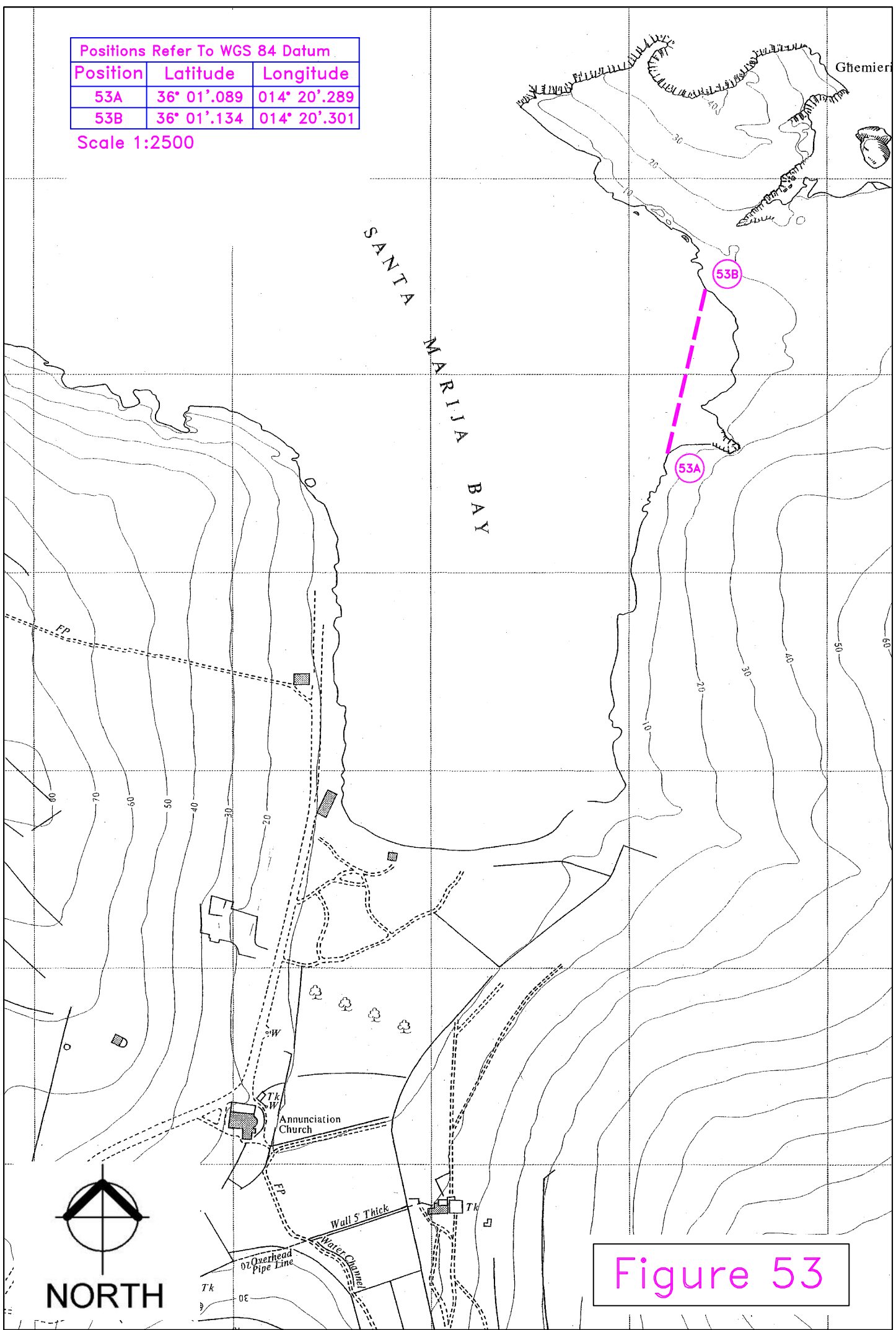


Figure 53