



PORTS AND YACHTING DIRECTORATE

Transport Malta

## NOTICE TO MARINERS No 21 of 2020

Our Ref: **TM/PYD/63/00**

Malta Transport Centre  
Marsa, MRS 1917  
Malta

Tel: (356) 2122 2203  
Fax: (356) 2125 0365  
Email: [info.tm@transport.gov.mt](mailto:info.tm@transport.gov.mt)

[www.transport.gov.mt](http://www.transport.gov.mt)

15 April 2020

### AUV Surveys 2020

The Ports and Yachting Directorate, Transport Malta, notifies mariners that an Autonomous Underwater Vehicle (AUV) survey will be carried out off Marsascala and Marsaxlokk and will be assisted by the vessel MV Chiko.

The AUV surveys will be carried out within the points A, B, C, D, E and F (Area 1) and within the points U, V, W, X, Y and Z (Area 2) shown hatched on attached charts.

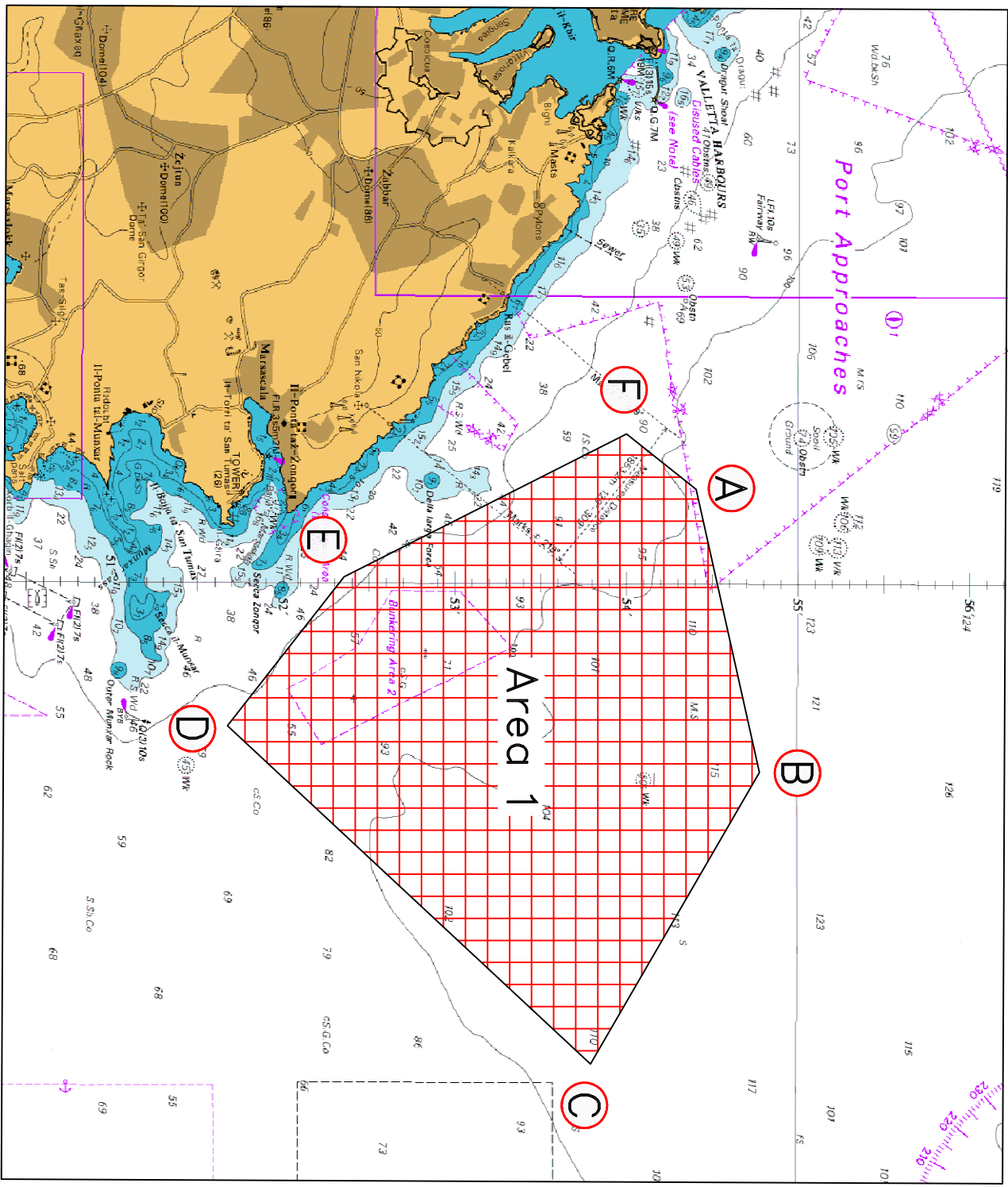
Position	Latitude (N)	Longitude (E)
A	35° 54'.411	014° 34'.321
B	35° 54'.787	014° 36'.350
C	35° 53'.808	014° 38'.448
D	35° 51'.678	014° 36'.030
E	35° 52'.357	014° 34'.959
F	35° 54'.003	014° 33'.924
U	35° 51'.656	014° 36'.032
V	35° 51'.473	014° 37'.978
W	35° 47'.979	014° 37'.209
X	35° 46'.305	014° 37'.970
Y	35° 45'.804	014° 36'.619
Z	35° 48'.096	014° 35'.298

Weather permitting the survey will start with immediate effect and is expected to be completed by mid May 2020 during daylight hours.

Mariners are instructed to navigate with caution when close to the above mentioned areas and give the vessel MV Chiko a wide berth of 150m.

Mariners are also notified to abide with any instructions given by Marsaxlokk Port Control (Marsaxlokk VTS) on VHF Channel 14 and Valletta Port Control (Valletta VTS) on VHF Channel 12.

Charts Affected: **BA 36, 2538, 194, 2123, 2124**



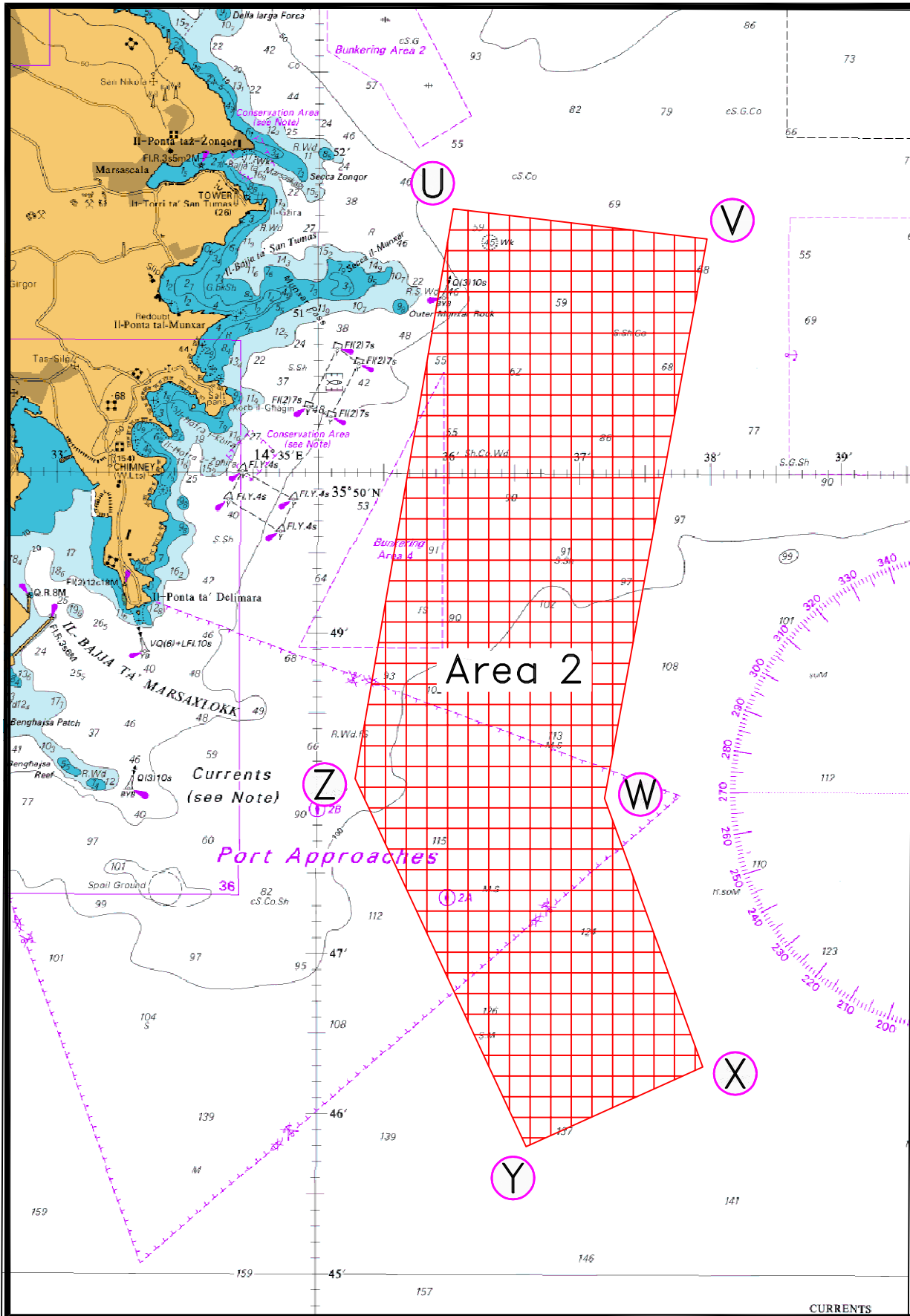
© British Crown Copyright 1970, 1983, 1986, 1988, 1999, 2000  
 All rights reserved.

The UK Hydrographic Office makes the accompanying data  
 Available to Malta Maritime Authority (Transport Malta)  
 Under the terms and conditions of agreement HO 1427/020930/01.

**DISCLAIMER**

Whilst the UK Hydrographic Office has endeavoured to ensure  
 That the material supplied is suitable for the purpose described,  
 It accepts no liability (to the maximum extent permitted by law)  
 For any damage or loss of any nature arising from its use.  
 The material supplied is used entirely at the Recipient's own risk.

Chart 1



© British Crown Copyright 1970, 1983, 1986, 1988, 1999, 2000  
 All rights reserved.

The UK Hydrographic Office makes the accompanying data  
 Available to Malta Maritime Authority (Transport Malta)  
 Under the terms and conditions of agreement HO 1427/020930/01.

**DISCLAIMER**

Whilst the UK Hydrographic Office has endeavoured to ensure  
 That the material supplied is suitable for the purpose described,  
 It accepts no liability (to the maximum extent permitted by law)  
 For any damage or loss of any nature arising from its use.  
 The material supplied is used entirely at the Recipient's own risk.

# Chart 2