



PORTS AND YACHTING DIRECTORATE

Transport Malta

LOCAL NOTICE TO MARINERS No 163 OF 2019

Our Ref: **TM/PYD/0001/19**

Malta Transport Centre
Marsa, MRS 1917
Malta

Tel: (356) 2122 2203
Fax: (356) 2125 0365
Email: info.tm@transport.gov.mt

05 December 2019

www.transport.gov.mt

Geotechnical Investigation in the Grand Harbour, Valletta

The Ports and Yachting Directorate, Transport Malta notifies Mariners that Infrastructure Malta will be carrying out Geotechnical Investigation in different areas within the Grand Harbour, Valletta. The investigation will commence on Friday 6th December 2019 and be completed by Friday 28th February 2020.

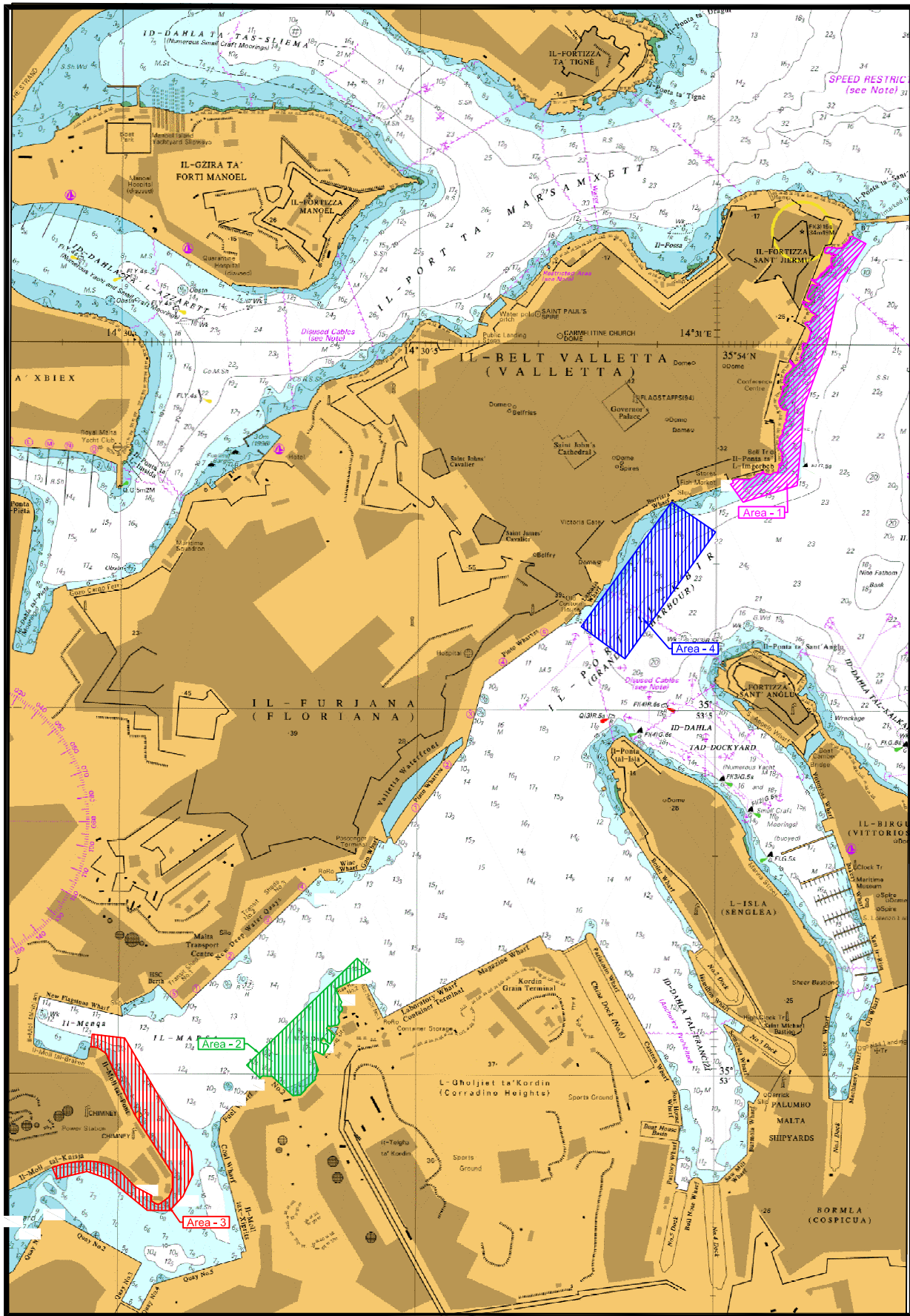
The work consists of geotechnical investigation in areas 1, 2, 3 and 4 (as shown on attached chart) and will be carried out from flat barges.

| Area | Start Date | Completion Date |
|------|---------------------------------------|--|
| 1 | Thursday 2 nd January 2020 | Thursday 30 th January 2020 |
| 2 | Monday 20 th January 2020 | Friday 28 th February 2020 |
| 3 | Monday 23 rd December 2019 | Sunday 5 th January 2020 |
| 4 | Friday 6 th December 2019 | Tuesday 31 st December 2019 |

The works will be coordinated by the Valletta Port Control (Valletta VTS), the Traffic Management Unit (TMU) at Transport Malta and the contractor on site.

Masters and operators of vessels are advised to keep a sharp lookout, navigate with caution and slow speed (no wake) and give the indicated areas a wide berth. They are to comply with any instructions given by Valletta Port Control (Valletta VTS) on VHF Channel 12 and any enforcement agency on site.

Charts affected: **BA 177, 2537, 2538**



© British Crown Copyright 1970, 1983, 1986, 1988, 1999, 2000
All rights reserved.

The UK Hydrographic Office makes the accompanying data
Available to Malta Maritime Authority (Transport Malta)
Under the terms and conditions of agreement HO 1427/020930/01.

DISCLAIMER

Whilst the UK Hydrographic Office has endeavoured to ensure
That the material supplied is suitable for the purpose described,
It accepts no liability (to the maximum extent permitted by law)
For any damage or loss of any nature arising from its use.
The material supplied is used entirely at the Recipient's own risk.