



PORTS AND YACHTING DIRECTORATE

Transport Malta

## LOCAL NOTICE TO MARINERS No 151 of 2019

Our Ref: **TM/PYD/63/95**

Malta Transport Centre  
Marsa, MRS 1917  
Malta

Tel: (356) 2122 2203  
Fax: (356) 2125 0365  
Email: [info.tm@transport.gov.mt](mailto:info.tm@transport.gov.mt)

13 November 2019

[www.transport.gov.mt](http://www.transport.gov.mt)

### Diving survey at Id-Dahla ta' L-Azzarett in Il-Port ta' Marsamxett

The Ports and Yachting Directorate, Transport Malta notifies mariners that a diving survey will be carried out in the area (as shown hatched on attached chart) at Id-Dahla ta' L-Azzarett in Il-Port ta' Marsaxett.

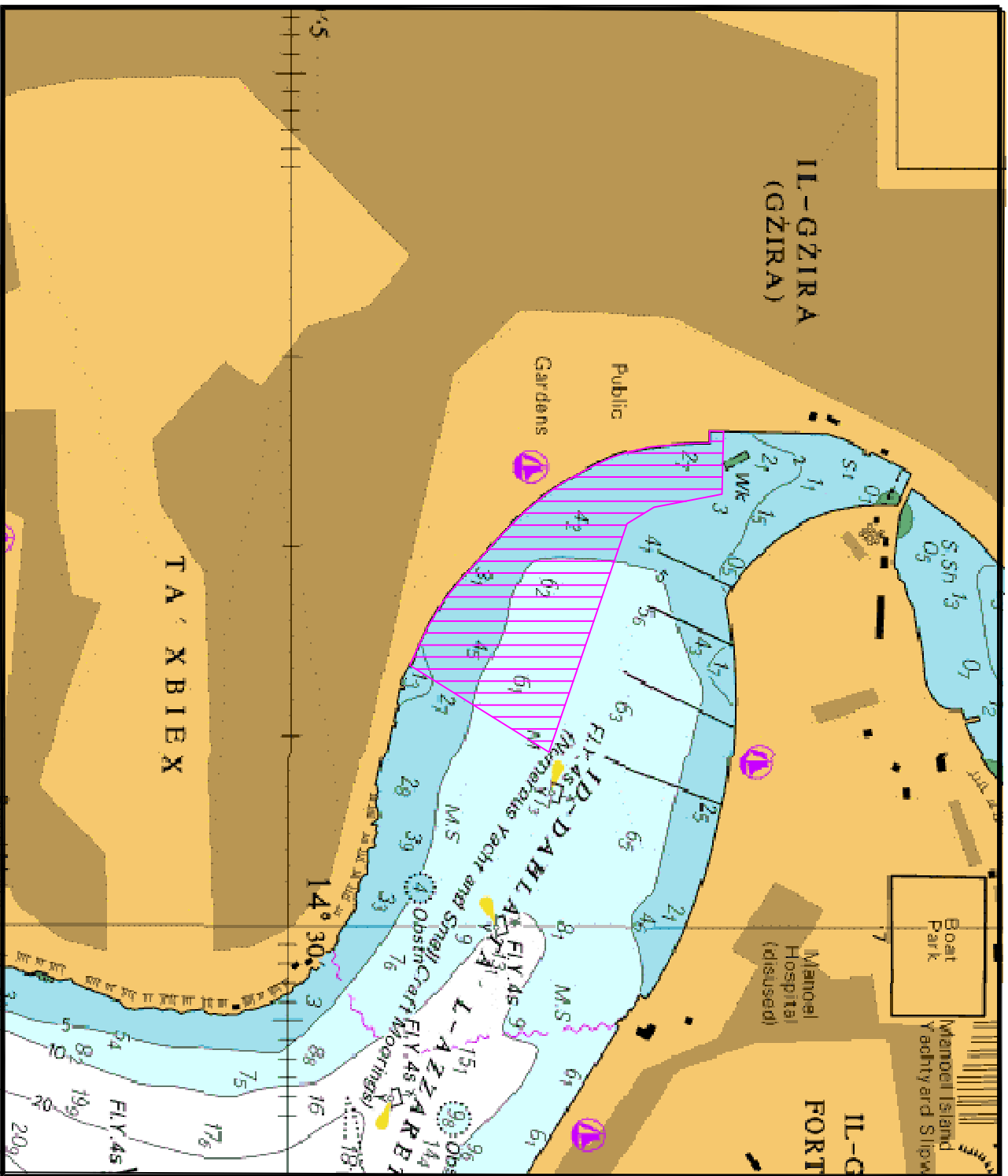
The survey will start on Tuesday 19<sup>th</sup> November 2019 and will be completed by Tuesday 3<sup>rd</sup> December 2019.

The support vessel "Julie Pearl" will be assisting the diver during the survey and will be displaying the international code of Signals flag "A".

Masters and operators of vessels are advised to keep a sharp lookout, navigate with caution and slow speed (no wake) when navigating close to the above indicated area. They are to give the above area a wide berth of at least 50m. They are to comply with instructions given by Valletta Port Control (Valletta VTS) on VHF Channel 12.

Chart affected: **BA 177**

Positions referred to **WGS 84 DATUM**.



© British Crown Copyright 1970, 1983, 1986, 1988, 1999, 2000  
 All rights reserved.

The UK Hydrographic Office makes the accompanying data  
 Available to Malta Maritime Authority (Transport Malta)  
 Under the terms and conditions of agreement HO 1427/020930/01.

**DISCLAIMER**

Whilst the UK Hydrographic Office has endeavoured to ensure  
 That the material supplied is suitable for the purpose described,  
 It accepts no liability (to the maximum extent permitted by law)  
 For any damage or loss of any nature arising from its use.  
 The material supplied is used entirely at the Recipient's own risk.