



PORTS AND YACHTING DIRECTORATE

Transport Malta

LOCAL NOTICE TO MARINERS No 138 of 2019

Our Ref: **TM/PYD/83/97**

Malta Transport Centre
Marsa, MRS 1917
Malta

Tel: (356) 2122 2203
Fax: (356) 2125 0365
Email: info.tm@transport.gov.mt

www.transport.gov.mt

11 October 2019

Gozo to Malta International Open water Swimming Races 2019

The Ports and Yachting Directorate, Transport Malta notifies mariners that the Gozo to Malta international open water swimming races will be held on Sunday 20th October 2019.

Participants will depart from Il-Bajja ta' Hondoq ir-Rummien (Gozo), point A on attached chart 1, at approximately 0800 hours. They will swim to the east of Comino and then to Ir-Ramla tal-Bir Malta), point B on attached chart 1 and is expected to be completed by 1130 hours.

POSITION	LATITUDE (N)	LONGITUDE (E)
A	36° 01'.665	014° 19'.349
B	35° 59'.171	014° 20'.804

Il-Fliegu ta' Ghawdex will be restricted to navigation from 0730 hours to 0900 hours and Il-Fliegu ta' Kemmuna will be restricted to navigation from 0830 hours to 1130 hours.

Another race will be held in Il-Fliegu ta' Kemmuna on the same day between 0830 hours and 1130 hours. Participants will start from point X, swim to point Y, then to point Z and back to point X (as shown on attached chart 2)

POSITION	LATITUDE (N)	LONGITUDE (E)
X	35° 59'.173	014° 20'.804
Y	35° 59'.354	014° 20'.598
Z	35° 59'.383	014° 20'.652

If due to bad weather the race cannot be held between Gozo and Malta all races will either be held at Il-Bajja tal-Mixquqa (as shown on attached chart 3) or at Sliema (as shown on attached chart 4) depending on the wind direction. In both cases the swimmers will start from point A, swim to point B, then to point C and back to point A.



Transport Malta

Ir-Ramla tal-Mixquqa

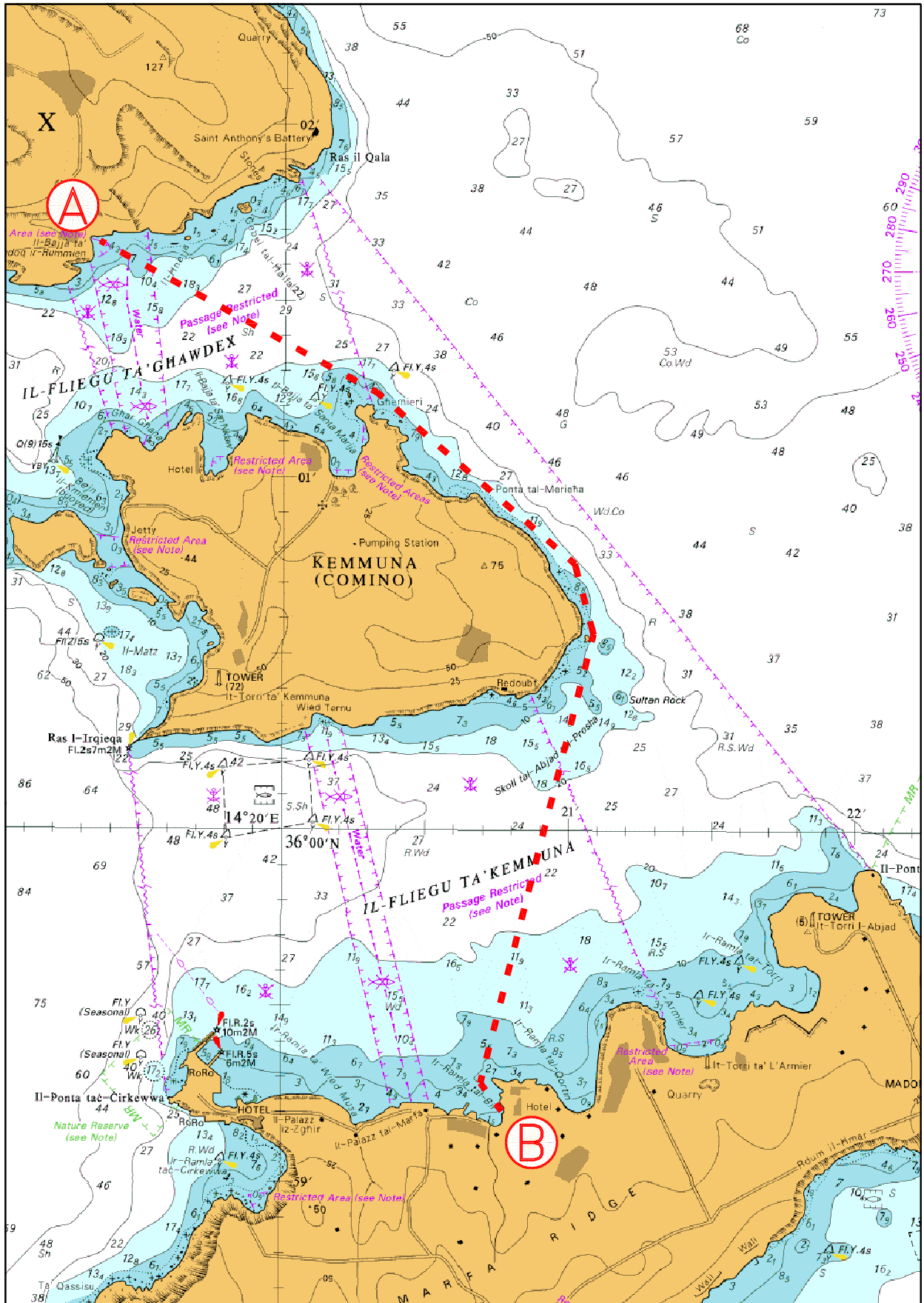
POSITION	LATITUDE (N)	LONGITUDE (E)
A	35° 56'.041	014° 20'.643
B	35° 56'.011	014° 19'.991
C	35° 55'.589	014° 20'.039

Sliema

POSITION	LATITUDE (N)	LONGITUDE (E)
A	35° 54'.689	014° 30'.497
B	35° 55'.183	014° 30'.788
C	35° 54'.927	014° 30'.224

Mariners are advised to keep a sharp lookout and navigate at slow speed, they are to keep well clear of the area during the stipulated time giving the swimmers and support vessels a wide berth. They are to obey any instructions issued by Valletta Port Control (Valletta VTS) on VHF channel 12 and maritime enforcement assets in the area.

Charts affected: **BA 211, 2537 and 2538**



© British Crown Copyright 1970, 1983, 1986, 1988, 1999, 2000
All rights reserved.

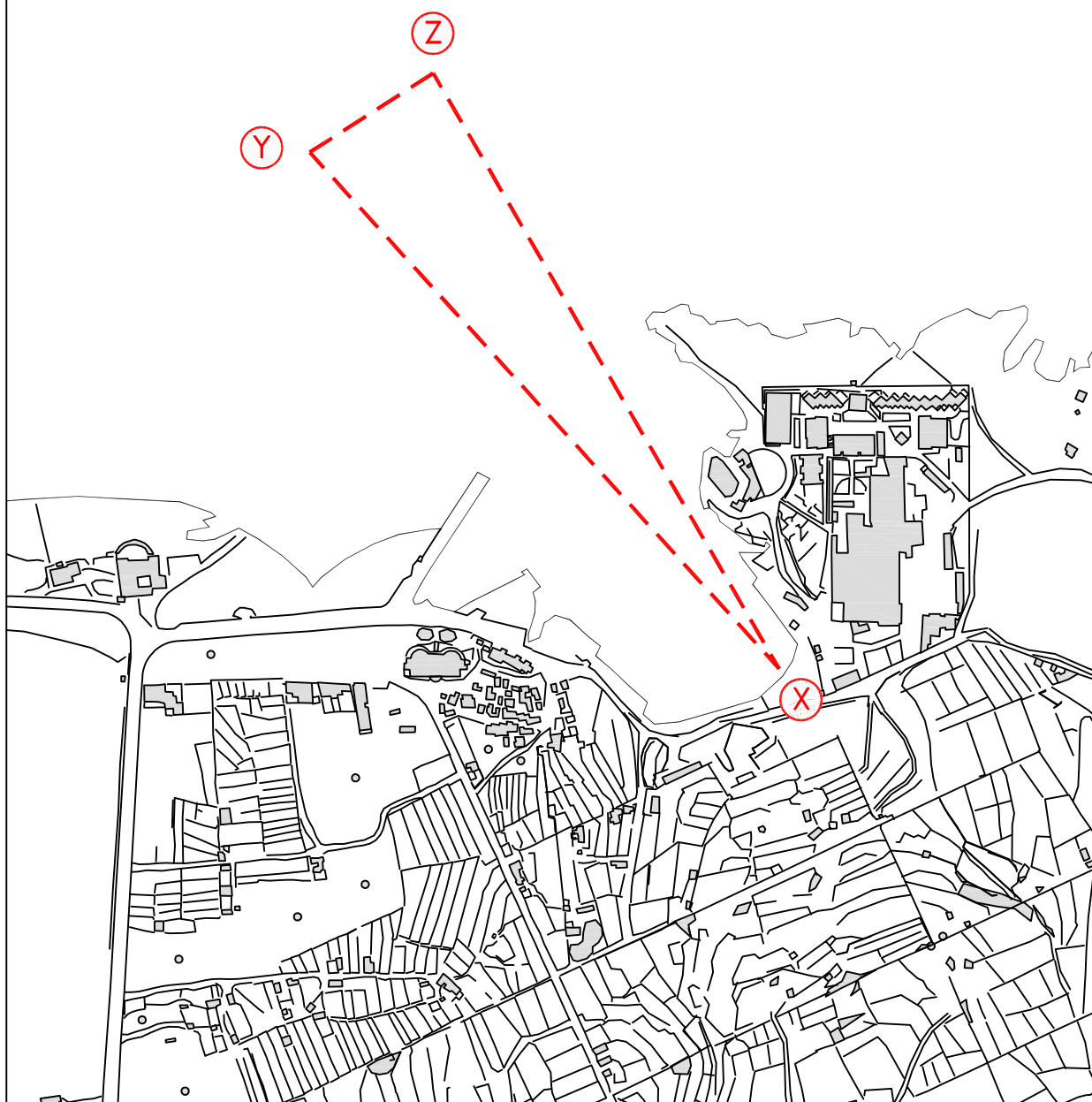
The UK Hydrographic Office makes the accompanying data
Available to Malta Maritime Authority (Transport Malta)
Under the terms and conditions of agreement HO 1427/020930/01.

DISCLAIMER

Whilst the UK Hydrographic Office has endeavoured to ensure
That the material supplied is suitable for the purpose described,
It accepts no liability (to the maximum extent permitted by law)
For any damage or loss of any nature arising from its use.
The material supplied is used entirely at the Recipient's own risk.

Chart 1

Il-Fliegu ta' Kemmuna

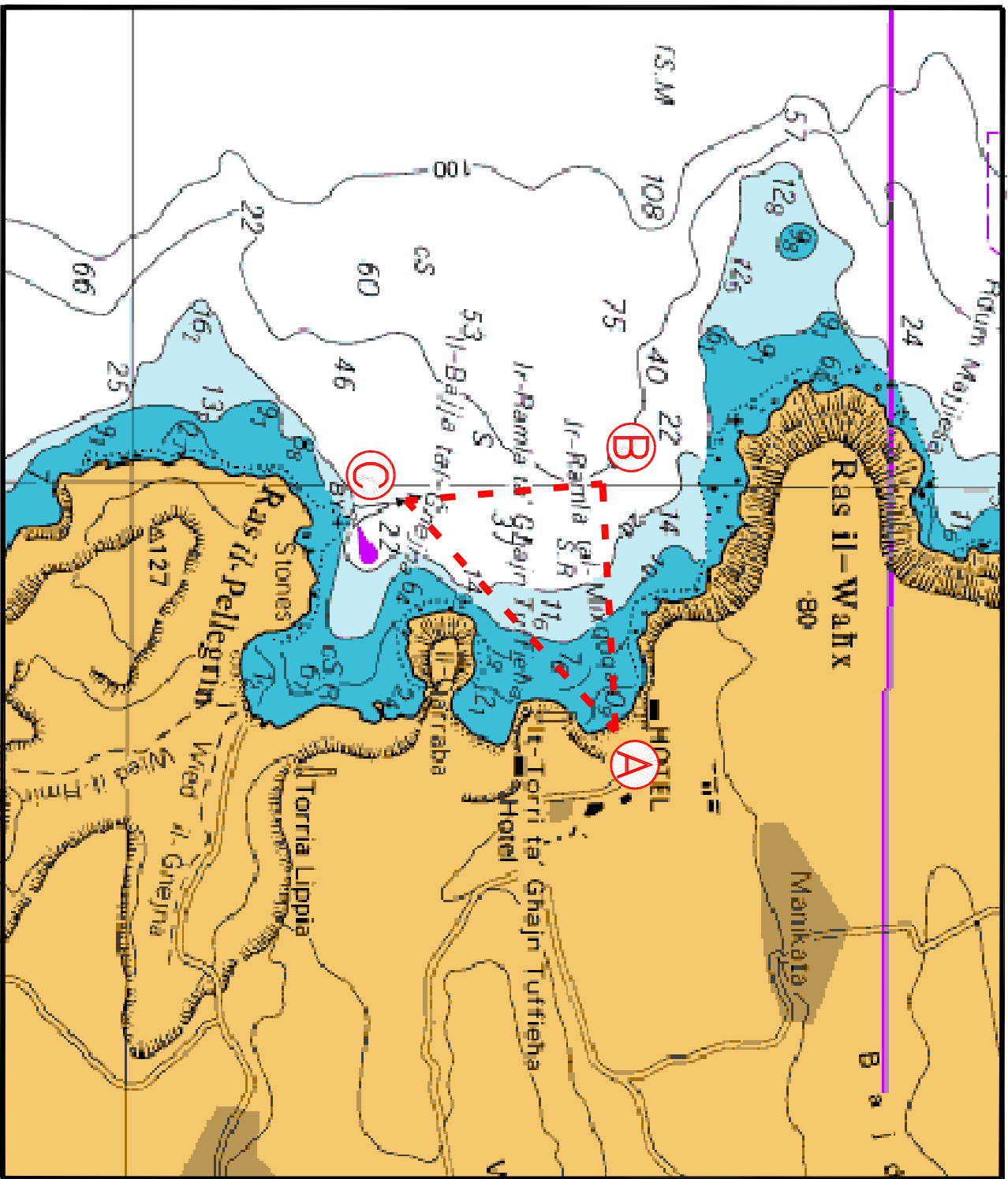


© Transport Malta all rights reserved

DISCLAIMER

Whilst the Ports and Yachting Directorate, Transport Malta has endeavoured to ensure that the material supplied is suitable for the purpose described, it accepts no liability (to the maximum extent permitted by law) for any damage or loss of any nature arising from its use.
The material supplied is used entirely at the Recipient's own risk.

Chart 2



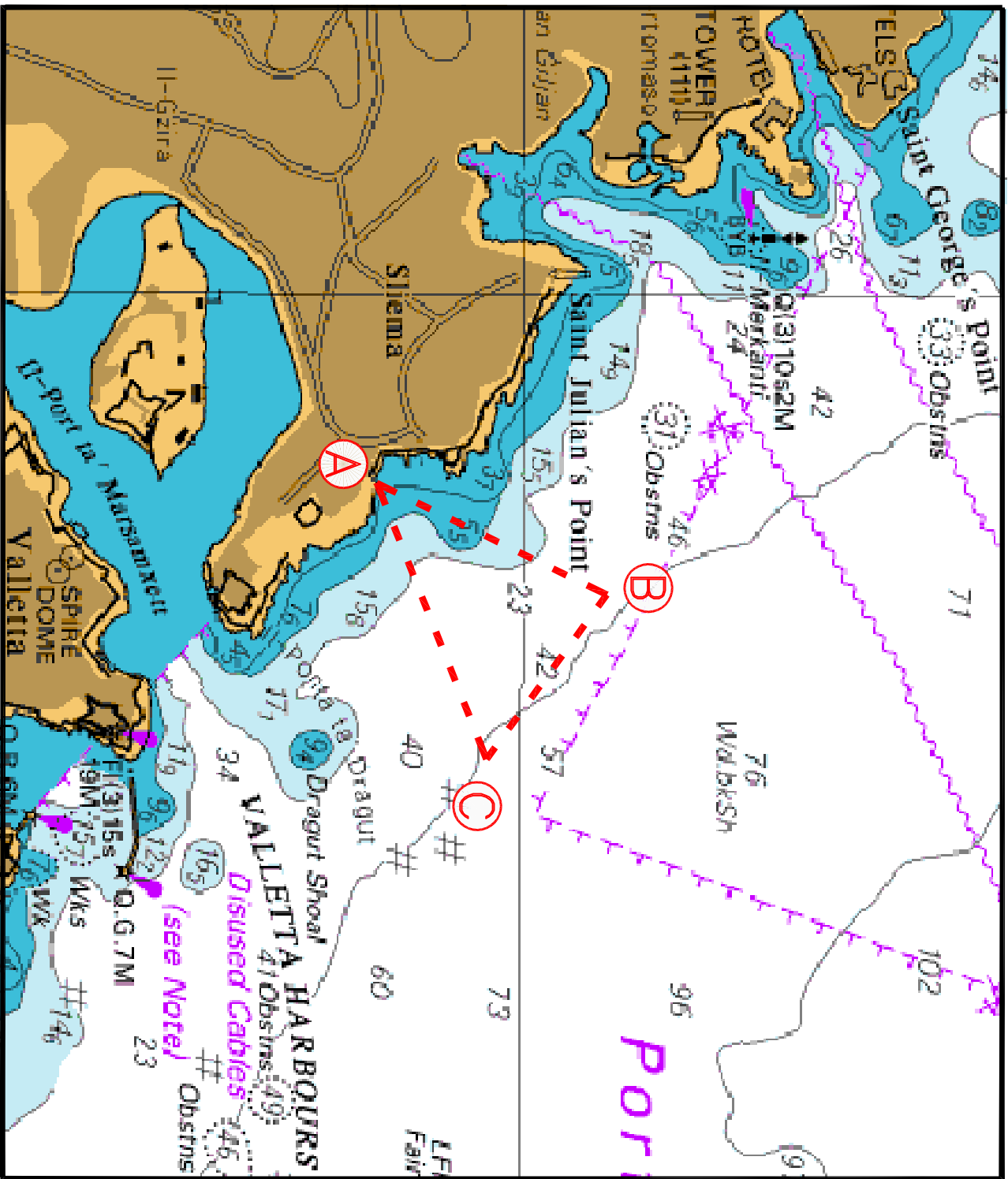
© British Crown Copyright 1970, 1983, 1986, 1988, 1999, 2000
 All rights reserved.

The UK Hydrographic Office makes the accompanying data
 Available to Malta Maritime Authority (Transport Malta)
 Under the terms and conditions of agreement HO 1427/020930/01.

DISCLAIMER

Whilst the UK Hydrographic Office has endeavoured to ensure
 That the material supplied is suitable for the purpose described,
 It accepts no liability (to the maximum extent permitted by law)
 For any damage or loss of any nature arising from its use.
 The material supplied is used entirely at the Recipient's own risk.

Chart 3



© British Crown Copyright 1970, 1983, 1986, 1988, 1999, 2000
 All rights reserved.

The UK Hydrographic Office makes the accompanying data
 Available to Malta Maritime Authority (Transport Malta)
 Under the terms and conditions of agreement HO 1427/020930/01.

DISCLAIMER

Whilst the UK Hydrographic Office has endeavoured to ensure
 That the material supplied is suitable for the purpose described,
 It accepts no liability (to the maximum extent permitted by law)
 For any damage or loss of any nature arising from its use.
 The material supplied is used entirely at the Recipient's own risk.

Chart 4