



PORTS AND YACHTING DIRECTORATE

LOCAL NOTICE TO MARINERS No 130 of 2019

Our Ref: **TM/PYD/132/89**

30 September 2019



Transport Malta

Malta Transport Centre
Marsa, MRS 1917
Malta

Tel: (356) 2122 2203
Fax: (356) 2125 0365
Email: info.tm@transport.gov.mt

www.transport.gov.mt

Filming at Marsaxlokk Port and Għar Lapsi - 'Vanishing Wake'

The Ports and Yachting Directorate, Transport Malta, notifies all mariners and sea vessel operators that filming activities will take at Marsaxlokk Port and Għar Lapsi.

Filming will start on Wednesday 2nd October 2019 and should be completed by Friday 8th November 2019.

Filming will be carried out from the following locations (as shown on attached charts) and also while transiting between the same locations:

- Chart 1 - Marsaxlokk (Sunday market area)
- Chart 2 - Marsaxlokk (next to the power station)
- Chart 3 - Marsaxlokk (Il- Magħluq sandy beach)
- Chart 4 - Għar Lapsi (Slipway and Open sea)
- Chart 5 - Open sea between Marsaxlokk Port and Għar Lapsi

A clear horizon is requested from where filming is being carried out at the time, during the dates and times listed above.

The vessel MFA7277 and a decommissioned luzzu (to be used as prop) will be used during the filming and are to be given a wide berth when sighted.

Mariners are requested to keep a sharp look out and navigate at slow speed, in the vicinity of the above areas. They are to cooperate with the organizers and Maritime Enforcement officers in the area. Moreover they are to obey any instructions given by Marsaxlokk Port Control (Marsaxlokk VTS) on VHF channel 14.

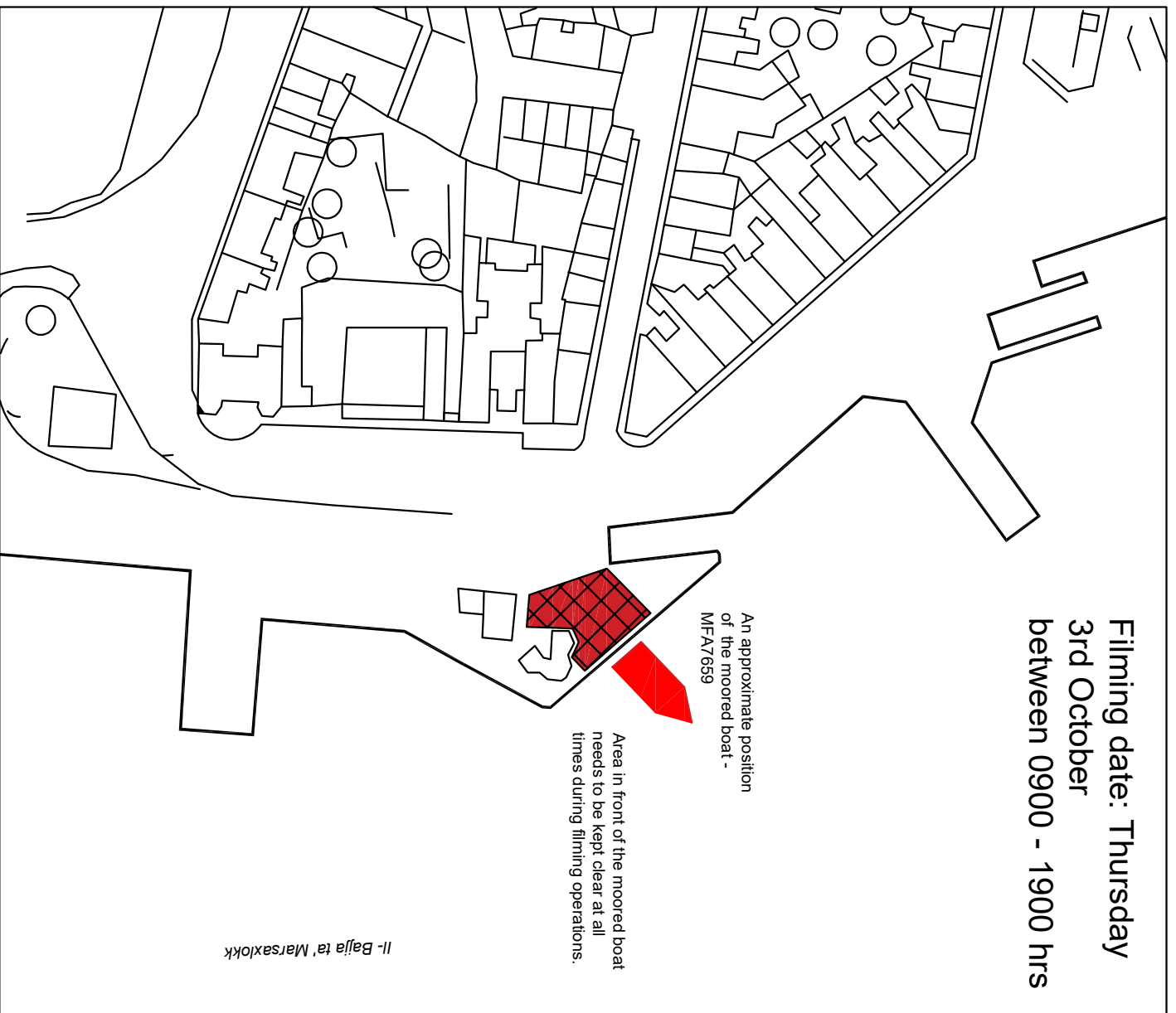
Charts affected: **BA 36, 2538 .**

**Filming date: Thursday
3rd October
between 0900 - 1900 hrs**

An approximate position
of the moored boat -
MF A7659

Area in front of the moored boat
needs to be kept clear at all
times during filming operations.

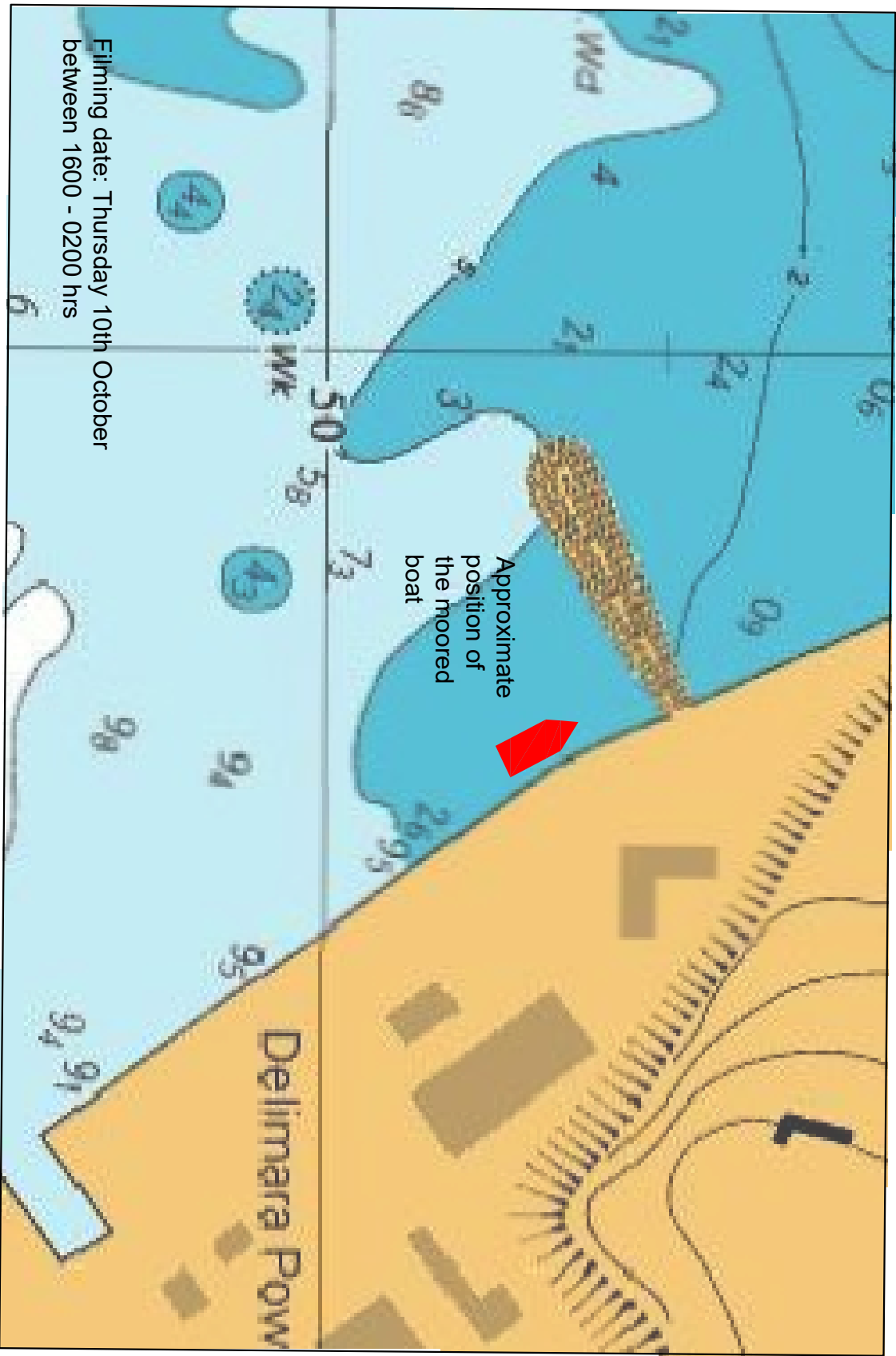
Il-Bajja ta' Marsaxlokk



DISCLAIMER

Whilst the Hydrographic Office has endeavoured to ensure that the material supplied is suitable for the purpose described, it accepts no liability (to the maximum extent permitted by law) for any damage or loss of any nature arising from its use. The material supplied is used entirely at the Recipient's own risk.

Chart No 1



Filming date: Thursday 10th October
 between 1600 - 0200 hrs

Approximate
 position of
 the moored
 boat

Delimara POW

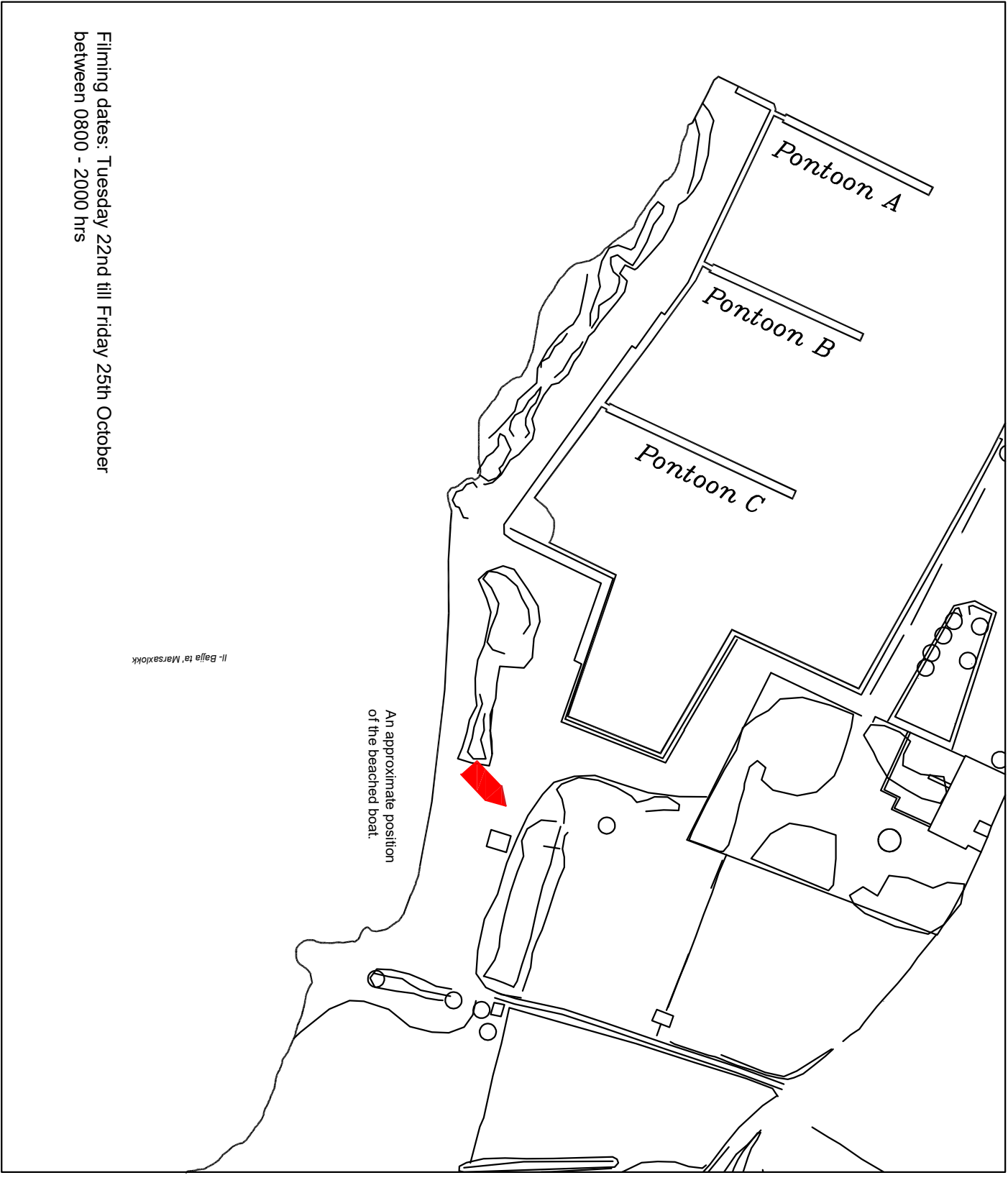
©British Crown Copyright 1970, 1983, 1986, 1988, 1989, 2000.
 All rights reserved

DISCLAIMER

While Transport Malta has endeavoured to ensure that the material supplied is suitable for the purpose described, it accepts no liability (to the maximum extent permitted by law) for any damage or loss of any nature arising from its use. The material supplied is used entirely at the Recipient's own risk

Chart No 2

DISCLAIMER
Whilst the Hydrographic Office has endeavored to ensure that the material provided is suitable for the purpose described, it accepts no liability (to the maximum extent permitted by law) for any damage or loss of any nature arising from its use. The material supplied is used entirely at the Recipient's own risk.



Filming dates: Tuesday 22nd till Friday 25th October
between 0800 - 2000 hrs

DISCLAIMER

Whilst the Hydrographic Office has endeavoured to ensure that the material supplied is suitable for the purpose described, it accepts no liability (to the maximum extent permitted by law) for any damage or loss of any nature arising from its use. The material supplied is used entirely at the Recipient's own risk.

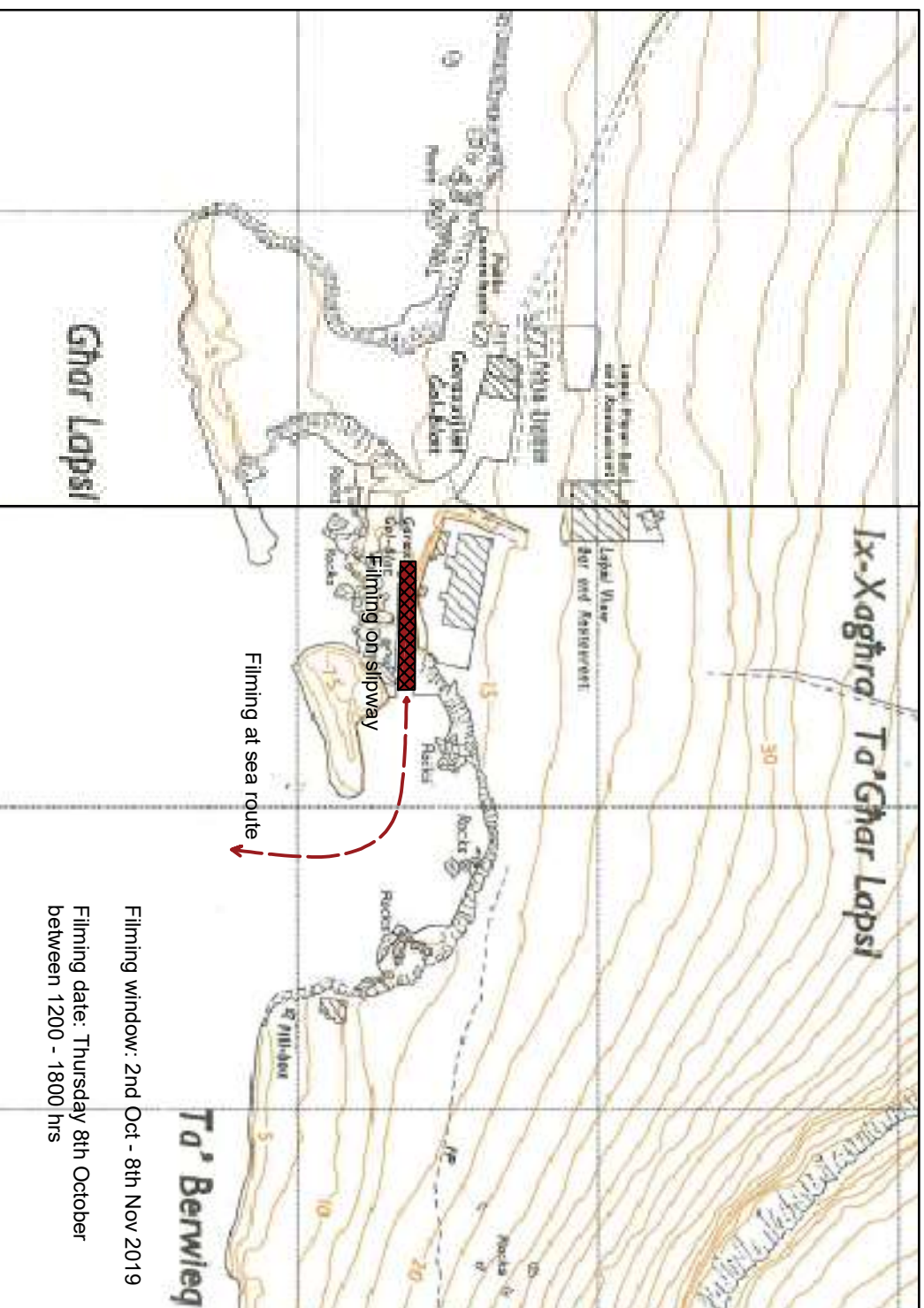


Chart 4

