



PORTS AND YACHTING DIRECTORATE

Transport Malta

## LOCAL NOTICE TO MARINERS No 112 of 2019

Our Ref: **TM/PYD/26/95/7**

Malta Transport Centre  
Marsa, MRS 1917  
Malta

Tel: (356) 2122 2203  
Fax: (356) 2125 0365  
Email: [info.tm@transport.gov.mt](mailto:info.tm@transport.gov.mt)

26 August 2019

[www.transport.gov.mt](http://www.transport.gov.mt)

### Firework Displays in Grand Harbour – Senglea Feast – 2019

The Ports and Yachting Directorate, Transport Malta, notifies mariners that firework displays will be let off from 2 barge next to each other moored 200m off Il-Ponta ta' Bighi, centered on position Y in attached chart.

POSITION	LATITUDE (N)	LONGITUDE (E)
Y	35°53'.632	014°31'.281

The firework displays will be let off on the following dates and times:-

Friday 6 <sup>th</sup> September 2019	between 0800 hours and 0815 hours, between 1200 hours and 1215 hours and between 2145 hours and 2300 hours.
Saturday 7 <sup>th</sup> September 2019	between 0800 hours and 0915 hours, between 1200 hours and 1230 hours, between 1800 hours and 1915 hours and between 2145 hours and 2345 hours.
Sunday 8 <sup>th</sup> September 2019	between 0800 hours and 0815 hours, between 1200 hours and 1215 hours and between 1900 hours and 2315 hours.

The barges will be moored in position on Wednesday 4<sup>th</sup> September 2019 and will be removed on Monday 9<sup>th</sup> September 2019. They will be left in position during the night and will be lit. A wide berth of 200 meters is requested from the barges on these days as the barges will be loaded with fireworks.



**Transport Malta**

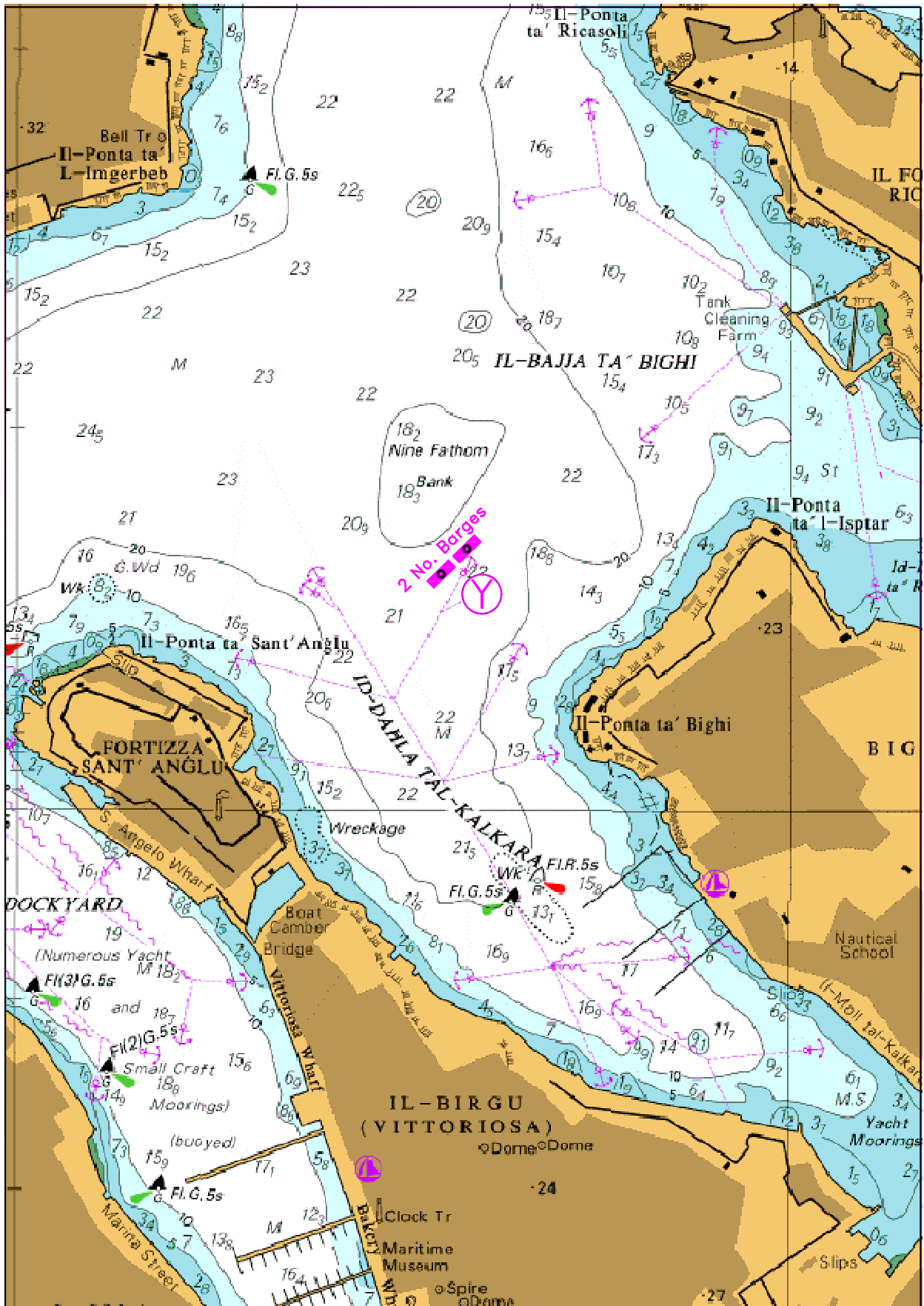
Owners on vessels moored in Rinella Bay are to remove their vessels from Wednesday 4<sup>th</sup> September 2019 to Monday 9<sup>th</sup> September 2019.

Transport Malta will accept no Liabilities whatsoever for any damage caused to vessels that are left within Rinella Bay and vessel within the 200m safety zone from the barges in the mentioned dates.

Mariners are to navigate with caution and slow speed. They are to obey any instructions and directions issued by Valletta Port Control (Valletta VTS) on VHF channel 12 and any enforcement agency.

Positions are referred to WGS 84 Datum.

Chart affected BA Chart 177.



©British Crown Copyright 1970, 1983, 1986, 1988, 1999, 2000. All Rights Reserved

The UK Hydrographic Office makes the accompanying data available to Transport Malta under the terms and conditions of agreement HD1427/020930/01.

**DISCLAIMER**

Whilst the UK Hydrographic Office has endeavoured to ensure that the material supplied is suitable for the purpose described, it accepts no liability (to the maximum extent permitted by law) for any damage or loss of any nature arising from this use. The material supplied is used entirely at the Recipient's own risk.