



PORTS AND YACHTING DIRECTORATE

Transport Malta

LOCAL NOTICE TO MARINERS No 067 of 2019

Our Ref: TM/PYD/63/95

Malta Transport Centre
Marsa, MRS 1917
Malta

Tel: (356) 2122 2203
Fax: (356) 2125 0365
Email: info.tm@transport.gov.mt

26 June 2019

www.transport.gov.mt

Diving survey at Id-Dahla ta' tas-Sliema in Il-Port ta' Marsamxett

The Ports and Yachting Directorate, Transport Malta notifies mariners that a diving survey will be carried out in the area enclosed by the imaginary lines between A, B, C and D and intermediate coast (shown hatched on attached chart), at Id-Dahla ta' tas-Sliema in Il-Port ta' Marsamxett.

The survey will start with immediate effect and will be completed by Sunday 30th June 2019.

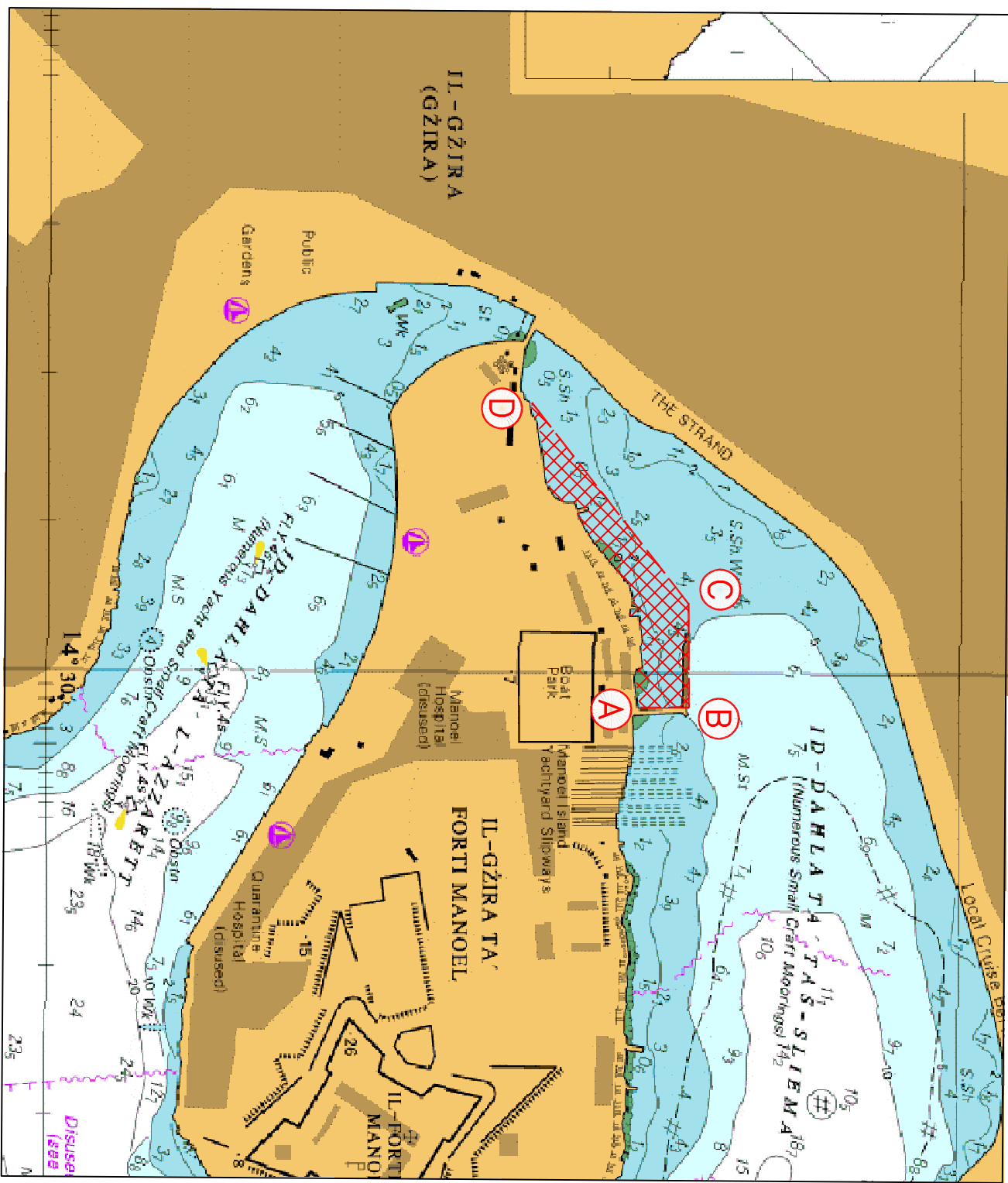
Position	Latitude (N)	Longitude (E)
A	35° 54'.331	014° 30'.023
B	35° 54'.352	014° 30'.023
C	35° 54'.351	014° 29'.956
D	35° 54'.267	014° 29'.821

The survey will be carried out by scuba divers displaying the international code of Signals flag "A".

Masters and operators of vessels are advised to keep a sharp lookout, navigate with caution and slow speed when navigating in the above indicated area. They are to give the above support vessel a wide berth of at least 100m. They are to comply with instructions given by Valletta Port Control (Valletta VTS) on VHF Channel 12.

Chart affected: BA 177

Positions referred to WGS 84 DATUM.



©British Crown Copyright 1970, 1983, 1986, 1988, 1989, 2000. All rights reserved

The UK Hydrographic Office makes the accompanying data available to Transport Malta under the terms and conditions of agreement HO 1427/0203001.

DISCLAIMER

Whilst the UK Hydrographic Office has endeavoured to ensure that the material supplied is suitable for the purpose described, it accepts no liability (to the maximum extent permitted by law) for any damage or loss of any nature arising from its use. The material supplied is used entirely at the Recipient's own risk.